

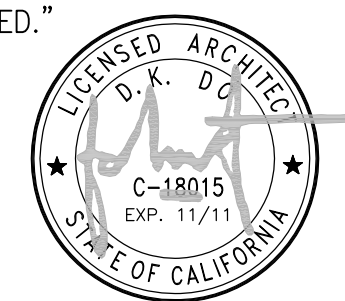
Sprint

Together with NEXTEL

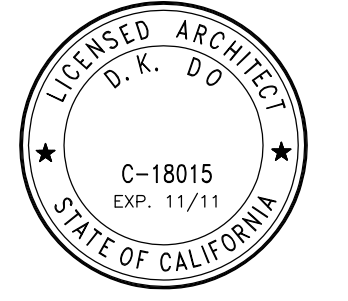
VOLTAIRE PALMS PLAZA SD34XC672

4051 SUITE E VOLTAIRE STREET
SAN DIEGO, CA 92107

"I, D.K. DO, DO HEREBY CERTIFY THAT THE STRUCTURE(S) OR MODIFICATION TO EXISTING STRUCTURE(S) SHOWN ON THESE PLANS DO NOT REQUIRE FEDERAL AVIATION ADMINISTRATION NOTIFICATION BECAUSE PER SECTION 77.15 (A) OF TITLE 14 OF THE CODE FEDERAL REGULATIONS CFR PART 77, NOTIFICATION IS NOT REQUIRED."



DCI PACIFIC
ARCHITECTURE - ENGINEERING - CONSULTING
32 EXECUTIVE PARK, SUITE 110, IRVINE, CA 92614
PHONE: (949) 475-1000 FAX: (949) 475-1001



Sprint
Together with NEXTEL
310 COMMERCE, SUITE 250
IRVINE, CA 92602
PHONE: (714) 617-9342

PROJECT IDENTIFICATION:
**VOLTAIRE PALMS PLAZA
SD34XC672**
4051 SUITE E VOLTAIRE STREET
SAN DIEGO, CA 92107

CURRENT ISSUE DATE:
11/22/11

ISSUED FOR:
ZONING

APPROVALS:

APPROVED BY:	INITIALS:	DATE:
LANDLORD		
LEASING		
ZONING		
RF		
CM		

DRAWN BY:	CHK:	APV:
HN	BOK	DKD

ISSUE STATUS:

△	DATE:	DESCRIPTION:	BY:
1	01/21/11	90% ZD	FV
2	05/09/11	100% ZD	FV
3	08/08/11	PLANNING COMMENTS	FV
4	11/22/11	PLANNING COMMENTS #2	FV

SHEET TITLE:
TITLE SHEET

SHEET NUMBER:	ISSUE LEVEL:
T1	

VOLTAIRE PALMS PLAZA
SD34XC672

DEVELOPMENT SUMMARY

PROJECT DESCRIPTION:
ZONING RENEWAL FOR AN EXISTING 'SPRINT' UNMANNED TELECOMMUNICATION FACILITY:
SPRINT ENTITLEMENT:
(3) ANTENNAS PER SECTOR, (9) TOTAL
(1) GPS ANTENNA
(4) EQUIPMENT CABINETS INSIDE CMU ENCLOSURE AT GROUND LEVEL
EXISTING INSTALLATION:
(3) ANTENNAS PER SECTOR, (9) TOTAL
(1) GPS ANTENNAS
(2) EQUIPMENT CABINETS INSIDE CMU ENCLOSURE AT GROUND LEVEL
SCOPE OF WORK:
1. NO ELECTRICAL CHANGES
2. NO STRUCTURAL CHANGES

PROPERTY INFORMATION:
PARCEL A: LOT 45 OF BAY CREST SUBDIVISION, IN THE CITY OF SAN DIEGO, COUNTY OF SAN DIEGO, STATE OF CALIFORNIA, ACCORDING TO MAP THEREOF NO. 5334, FILED IN THE OFFICE OF THE COUNTY RECORDER OF SAN DIEGO, JANUARY 1964.
ASSESSOR PARCEL NUMBER: 449-252-01
LEASE AREA: 242.0 SQ FT

BOXED BELOW IS A LIST OF DEVELOPMENT REGULATION DEVIATIONS, AND THE REQUIRED PERMITS/APPROVALS, N/A IF LEFT BLANK:
TO BE FILLED OUT BY ZONER/APPLICANT:

OWNER:
OWNER: MEUNITZ FAMILY TRUST
ADDRESS: 2643 HIDDEN VALLEY ROAD
LA JOLLA, CA 92037
CONTACT: JEFF LUBIN
PHONE: (858) 337-9590

EXISTING WCFs ON SAME PROPERTY:
NONE

BUILDING CODE INFORMATION:
EXISTING BUILDING/STRUCTURE:
OCCUPANCY = M
CONSTRUCTION TYPE = V N
SPRINKLER SYSTEM = TBD
PROPOSED STRUCTURE:
OCCUPANCY = N/A
CONSTRUCTION TYPE = N/A
SPRINKLER SYSTEM = N/A

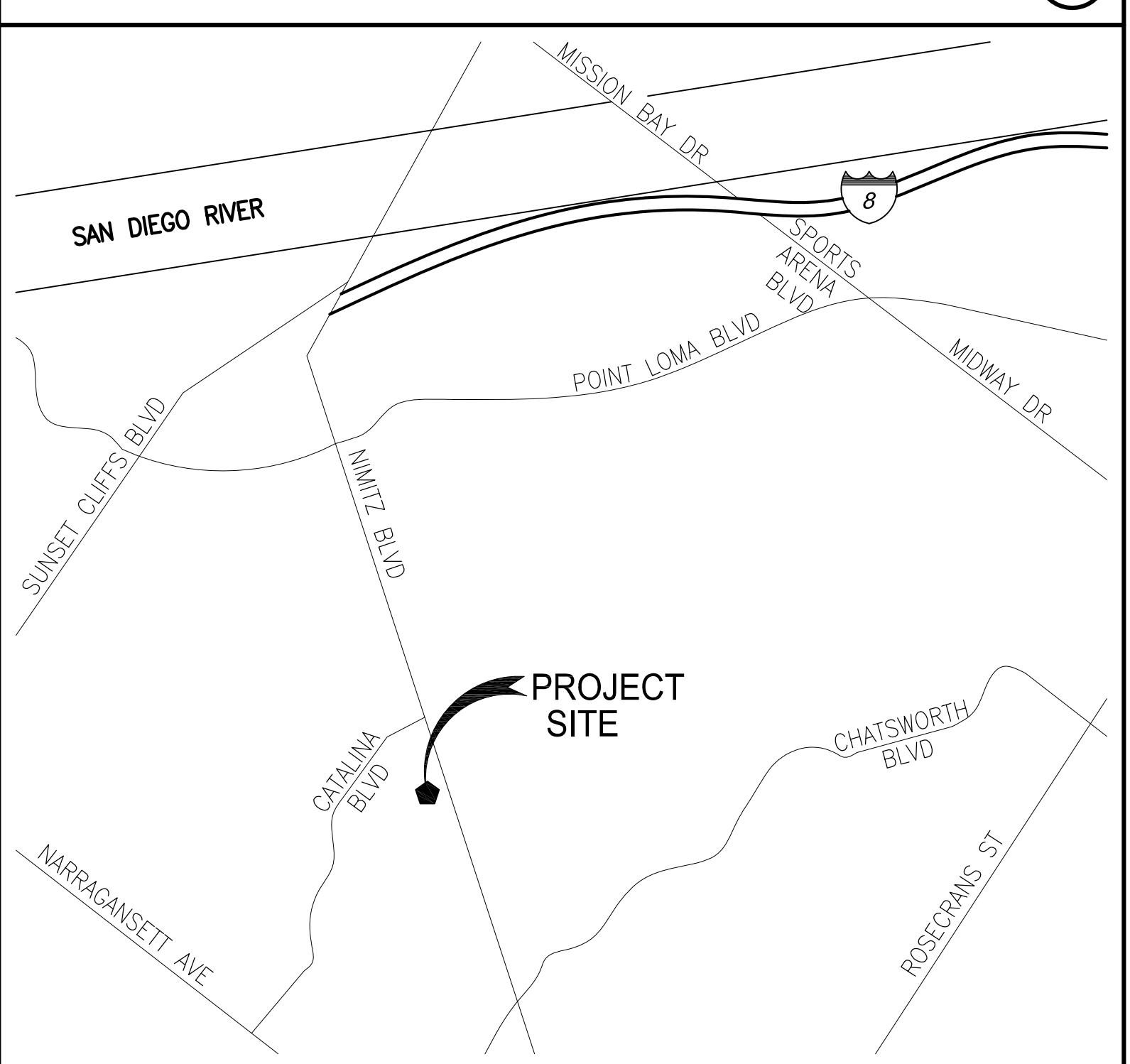
PROJECT TEAM:
CONSTRUCTION: PAUL HOKENESS
PHONE: (858) 231-8889
SITE ACQUISITION: BECKY SISKOWSKI
PHONE: (858) 243-2900
PLANNING: BECKY SISKOWSKI
PHONE: (858) 243-2900
ARCHITECT: D.K. DO, RA
PHONE: (949) 475-1000

ZONING INFORMATION:
JURISDICTION: SAN DIEGO
ZONING DESIGNATION: CC-3-5
LATITUDE: 32°44'33.05"N
LONGITUDE: 117°13'59.29"W
TOP OF (E) STRUCTURE: 30'-0" AGL
BASE OF STRUCTURE: 78.0' AMSL

CODE COMPLIANCE

- | | |
|---|--|
| 1. 2010 CALIFORNIA ADMINISTRATIVE CODE (CAC) | 5. 2010 CALIFORNIA ENERGY CODE |
| 2. 2010 CALIFORNIA BUILDING CODE (CBC), VOLUMES 1, AND 2 | (2008 EDITION CALIFORNIA ENERGY COMMISSION BUILDING ENERGY EFFICIENCY STANDARDS) |
| 3. 2009 EDITION INTERNATIONAL BUILDING CODE WITH 2010 CALIFORNIA AMENDMENTS | 6. 2010 CALIFORNIA FIRE CODE (CFC) |
| 4. 2010 CALIFORNIA ELECTRICAL CODE | (2009 EDITION OF INTERNATIONAL FIRE CODE WITH 2010 CALIFORNIA AMENDMENTS) |
| 5. 2010 CALIFORNIA MECHANICAL CODE (CMC) | 7. 2010 CALIFORNIA GREEN CODE |
| (2009 EDITION NATIONAL ELECTRICAL CODE WITH 2010 CALIFORNIA AMENDMENTS) | 8. 2010 CALIFORNIA REFERENCES STANDARDS CODE |
| 6. 2010 CALIFORNIA MECHANICAL CODE (CMC) | |
| (2009 EDITION NATIONAL ELECTRICAL CODE WITH 2010 CALIFORNIA AMENDMENTS) | |
| 7. 2010 CALIFORNIA MECHANICAL CODE (CMC) | |
| (2009 EDITION NATIONAL ELECTRICAL CODE WITH 2010 CALIFORNIA AMENDMENTS) | |

VICINITY MAP



DRIVING DIRECTIONS

- DEPART FROM SAN DIEGO INTERNATIONAL AIRPORT:
1. START OUT GOING EAST TOWARD N HARBOR DR.
 2. TURN LEFT ONTO N HARBOR DR.
 3. TURN SLIGHT RIGHT ONTO NIMITZ BLVD
 4. TURN RIGHT TO STAY ON NIMITZ BLVD
 5. TURN SLIGHT LEFT ONTO TENNYSON ST
 6. TURN SLIGHT RIGHT ONTO WABASKA DR
 7. TURN SLIGHT RIGHT ONTO VOLTAIRE ST
 8. 4051 VOLTAIRE ST STE E IS ON THE LEFT

APPROVAL	DATE	SIGNATURE
P.M.:		
LANDLORD:		
CONST:		
S/A:		
R.F.:		
ZONING:		
A&E:		
R.F.:		

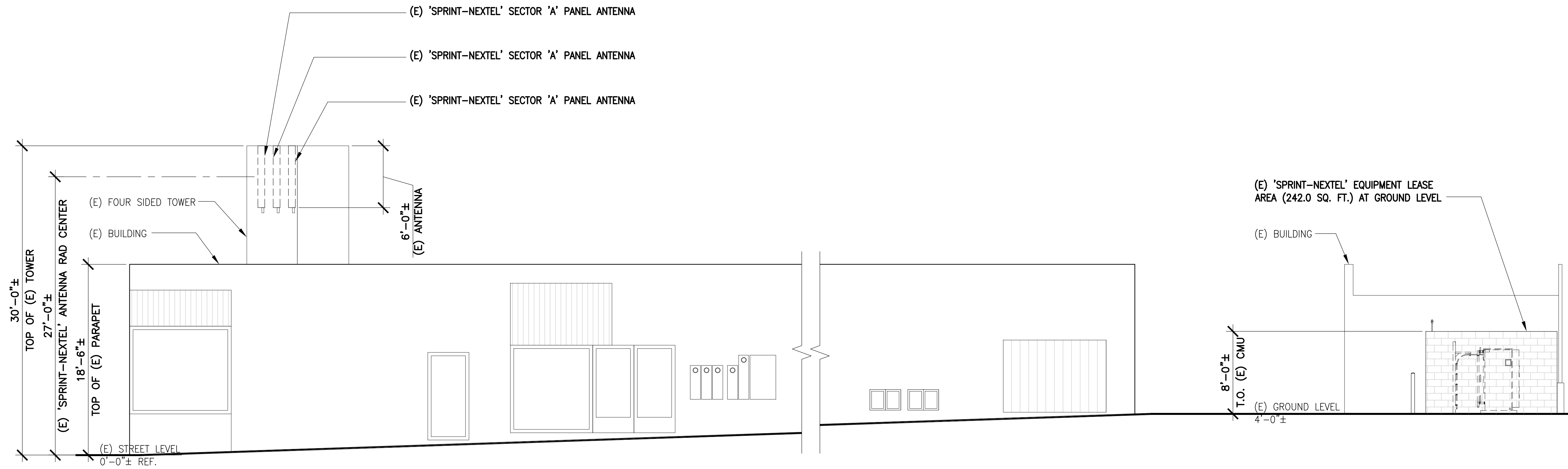
REVIEWERS SHALL CLEARLY PLACE INITIALS ADJACENT TO EACH REDLINE NOTE AS DRAWINGS ARE BEING REVIEWED.

DRAWING INDEX

SHEET	DESCRIPTION
T1	TITLE SHEET
A1	SITE, EQUIPMENT & ANTENNA LAYOUT PLANS
A2	ELEVATIONS
A3	ELEVATIONS
D1	ANTENNA SPEC SHEET

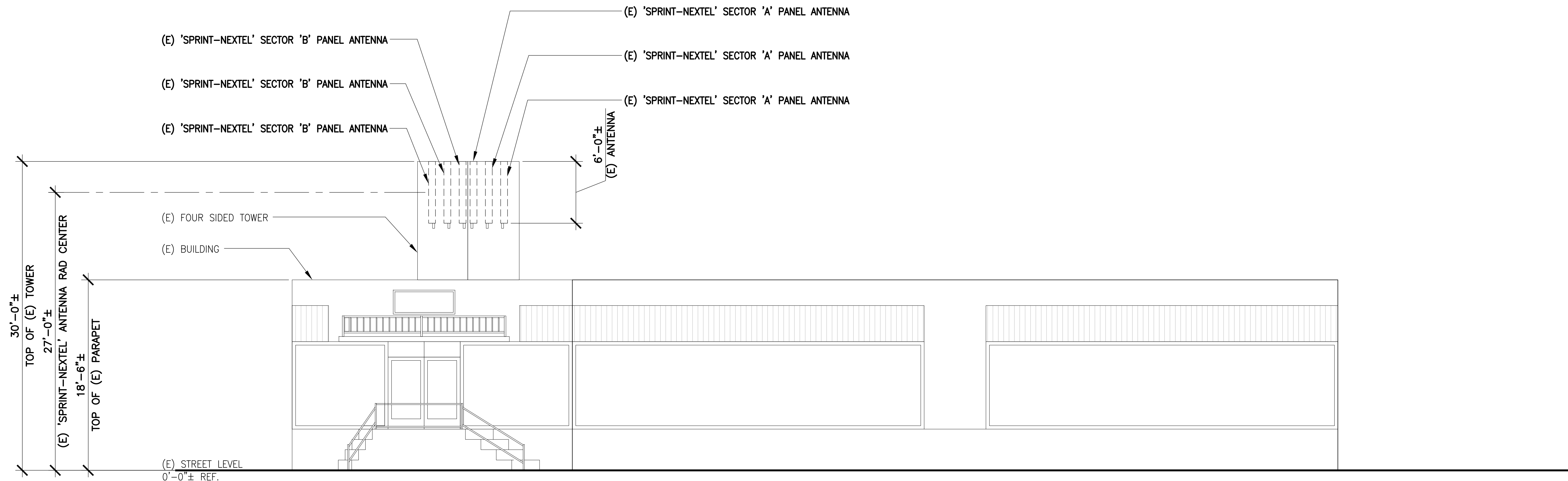
ABBREVIATIONS

A/C	AIR CONDITIONING	GA	GAUGE	OC	ON CENTER
AGL	ABOVE FINISH GRADE	GALV	GALVANIZED	OD	OUTSIDE DIAMETER
APPROX	APPROXIMATELY	GC	GENERAL CONTRACTOR	PLYWD	PLYWOOD
BLDG	BUILDING	GRND	GROUND	PROP	PROPERTY
BLK	BLOCKING	GYP BD	GYP SUM WALL BOARD	R	RADIUS
CLR	CLEAR	HORZ	HORIZONTAL	REQ	REQUIRED
CONC	CONCRETE	HR	HOUR	RM	ROOM
CONST	CONSTRUCTION	HT	HEIGHT	RO	ROUGH OPENING
CONT	CONTINUOUS	HVAC	HEATING, VENTILATION, AIR CONDITIONING	SHT	SHEET
DBL	DOUBLE	ID	INSIDE DIAMETER	SIM	SIMILAR
DIA	DIAMETER	IN	INCH	SPEC	SPECIFICATION
DIAG	DIAGONAL	INFO	INFORMATION	SF	SQUARE FOOT
DN	DOWN	INSUL	INSULATION	SS	STAINLESS STEEL
DET	DETAIL	INT	INTERIOR	STL	STEEL
DWG	DRAWING	CBC	CALIFORNIA BUILDING CODE	STRUCT	STRUCTURAL
E	EXISTING	SUSP	SUSPENDED	THRU	THROUGH
EA	EACH	L	LENGTH	T.O.	TOP OF
ELEV	ELEVATION	LBS	POUNDS	TYP	TYPICAL
ELEC	ELECTRICAL	MAX	MAXIMUM	UNO	UNLESS NOTED OTHERWISE
EQ	EQUAL	MECH	MECHANICAL	VERT	VERTICAL
EQUIP	EQUIPMENT	MTL	METAL	VIF	VERIFY IN FIELD
EXT	EXTERIOR	MFR	MANUFACTURE	W/	WITH
FIN	FINISH	MGR	MANAGER	W/O	WITHOUT
FLUOR	FLUORESCENT	MIN	MINIMUM	WP	WATER PROOF
FLR	FLOOR	MISC	MISCELLANEOUS		
FT	FOOT	NA	NOT APPLICABLE		
		NIC	NOT IN CONTRACT		
		NTS	NOT TO SCALE		



SOUTHEAST ELEVATION

SCALE: 3/16"=1'-0" 0 1' 2' 5' 2

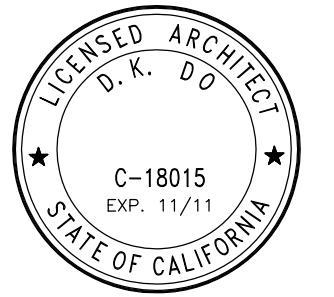


NORTHEAST ELEVATION

SCALE: 3/16"=1'-0" 0 1' 2' 5' 1

DCI PACIFIC

ARCHITECTURE · ENGINEERING · CONSULTING
32 EXECUTIVE PARK, SUITE 110, IRVINE, CA 92614
PHONE: (949) 475-1000 FAX: (949) 475-1001



Sprint
Together with NEXTEL
310 COMMERCE, SUITE 250
IRVINE, CA 92602
PHONE: (714) 617-9342

PROJECT IDENTIFICATION:
VOLTAIRE PALMS PLAZA
SD34XC672
4051 SUITE E VOLTAIRE STREET
SAN DIEGO, CA 92107

CURRENT ISSUE DATE:
11/22/11

ISSUED FOR:
ZONING

APPROVALS:

APPROVED BY:	INITIALS:	DATE:
LANDLORD		
LEASING		
ZONING		
RF		
CM		

DRAWN BY:	CHK:	APV:
HN	BOK	DKD

ISSUE STATUS:

△	DATE:	DESCRIPTION:	BY:
1	01/21/11	90% ZD	FV
2	05/09/11	100% ZD	FV
3	08/08/11	PLANNING COMMENTS	FV
4	11/22/11	PLANNING COMMENTS #2	FV

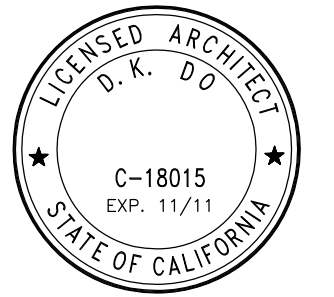
SHEET TITLE:

ELEVATIONS

SHEET NUMBER: ISSUE LEVEL:

A3

VOLTAIRE PALMS PLAZA
SD34XC672



Sprint
Together with NEXTEL
310 COMMERCE, SUITE 250
IRVINE, CA 92602
PHONE: (714) 617-9342

PROJECT IDENTIFICATION:
**VOLTAIRE PALMS PLAZA
SD34XC672**
4051 SUITE E VOLTAIRE STREET
SAN DIEGO, CA 92107

CURRENT ISSUE DATE:
11/22/11

ISSUED FOR:
ZONING

APPROVALS:

APPROVED BY:	INITIALS:	DATE:
LANDLORD		
LEASING		
ZONING		
RF		
CM		

DRAWN BY:	CHK:	APV:
HN	BOK	DKD

ISSUE STATUS:

△	DATE:	DESCRIPTION:	BY:
1	01/21/11	90% ZD	FV
2	05/09/11	100% ZD	FV
3	08/08/11	PLANNING COMMENTS	FV
4	11/22/11	PLANNING COMMENTS #2	FV

SHEET TITLE:
ANTENNA SPEC SHEET

SHEET NUMBER:
D1
ISSUE LEVEL:
VOLTAIRE PALMS PLAZA
SD34XC672

Amphenol JAYBEAM

- PCSS065-19 -

Amphenol JAYBEAM

PCSS065-19

Horizontal Plane

Vertical Plane

Cellular 1850 - 1990 MHz

V-Pol / 65° Az / 18.6 dBi

Type	PCSS065-19-x*
Product Code	PCSS065-19-x*
Frequency Range (MHz)	1850 - 1990
Gain	18.6 dBi (16.5 dBd)
Input Impedance (Ohms)	50
VSWR	< 1.4 : 1
Polarization	Vertical
Electrical Downtilt (x)	0°, 2°, 5°
Horizontal Beamwidth (-3 dB)	65°
Vertical Beamwidth (-3 dB)	4.7°
1st Upper Sidelobe	< -18 dB
1st Null	> -18 dB
Front to Back Ratio	> 25 dB
Intermodulation	< -153 dBc for 2 x 20 W carriers
Input Power (Watts)	250
Input Connector Type (*) / Location	7/16-DIN Female / Bottom
Operating Temperature	Top Feed Option available in 0° and 5° -40° F (-40° C) to +140° F (+60° C)
Wind Speed	125 mph (200 km/h; 56 m/s)
Wind Loads (160 km/h)	Front: 104 lbf (461 N) Side: 21 lbf (93 N)
Antenna Weight	14 lbs (6.4 kg)
Dimensions (in)	Height: 74.0 Width: 7.9 Depth: 1.6 (1877 x 200 x 40 mm)
Pole Mounting Kit: MKS05P01	Weight: 6.5 lbs (2.9 kg)
Scissor Tilt Mounting Kit: MKS05T03	Weight: 9.1 lbs (4.1 kg)
Bar Tilt Mounting Kit Option: MKS05T04	Weight: 8.8 lbs (3.0 kg)

Amphenol JAYBEAM reserves the right to modify or amend any antenna or specification without prior notice. The specification shown above is indicative of the product and full technical details can be obtained directly from the company.

Web Site: www.jaybeam.com