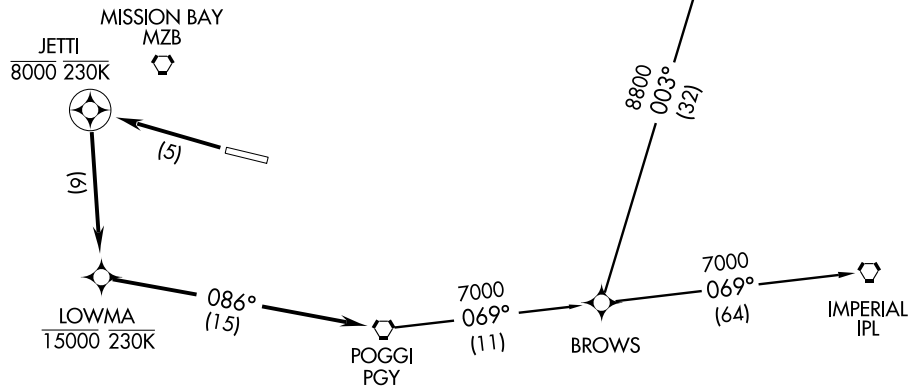


POGGI TWO DEPARTURE (RNAV)

SAN DIEGO INTL (SAN)
SAN DIEGO, CALIFORNIA

ATIS 134.8
CLNC DEL 125.9
GND CON 123.9
LINDBERGH TOWER
118.3 338.225
SOCAL DEP CON
125.15 317.55



SW-3, 14 FEB 2008 to 13 MAR 2008

SW-3, 14 FEB 2008 to 13 MAR 2008

- NOTE: DME/DME/IRU or GPS required.
- NOTE: Imperial Transition: For Non-GPS equipped aircraft PGY, MZB, JLI VORTACs must be operational.
- NOTE: Julian Transition: For Non-GPS equipped aircraft PGY VORTAC must be operational.
- NOTE: RNAV 1.
- NOTE: RADAR REQUIRED.
- NOTE: Do not exceed 230 KIAS until LOWMA.

TAKE-OFF MINIMUMS

Rwy 9, NA-ATC.
 Rwy 27, Standard with minimum ATC climb of 400' per NM to 520 and minimum obstacle climb of 317' per NM to 1600.

TAKE-OFF OBSTACLE NOTES

Rwy 27: Multiple trees, flag pole, light pole, and obstruction lights beginning at 287' from DER, 1985' left to 1577' right of centerline, up to 116' AGL/269' MSL.

NOTE: Chart not to scale.



DEPARTURE ROUTE DESCRIPTION

TAKE-OFF RUNWAY 27: Climb direct to cross JETTI at or below 8000, then climbing left turn direct to cross LOWMA at or below 15000, then via 086° track to POGGI VORTAC, Thence....

...via (transition). Maintain 15000 or as assigned by ATC, expect filed altitude 10 minutes after departure.

IMPERIAL TRANSITION (POGGI2.IPL)

JULIAN TRANSITION (POGGI2.JLI)

POGGI TWO DEPARTURE (RNAV)