

# PEBLE THREE DEPARTURE

SL-373 (FAA)

SAN DIEGO INTL (SAN)  
SAN DIEGO, CALIFORNIA

ATIS 134.8  
CLNC DEL  
125.9  
GND CON  
123.9  
LINDBERGH TOWER  
118.3 338.225  
SOCAL DEP CON  
WEST 119.6 363.1

SEAL BEACH  
115.7 SLI : : : :  
Chan 104  
N33°47.00' - W118°03.29'  
L-3-4, H-4

SANTA CATALINA  
111.4 SXC : : : :  
Chan 51  
N33°22.50' - W118°25.20'  
L-3-4, H-4

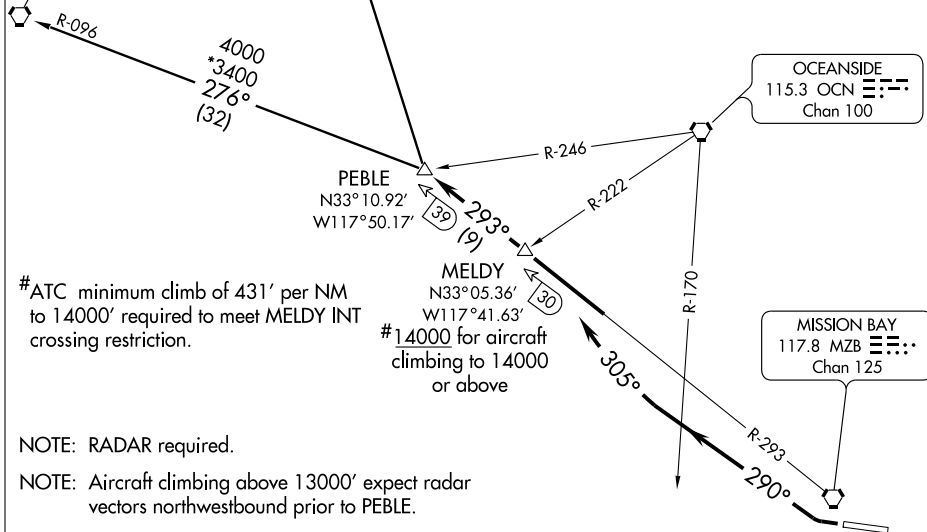
### TAKE-OFF MINIMUMS

Rwy 9: NA-ATC operations.  
Rwy 27: 300-1½ or standard with minimum climb  
of 317' per NM to 400.

NOTE: Rwy 27: Trees 1 mile from departure end of  
rwy, 685' right of centerline, 220' AGL/253' MSL.  
Trees 3118' from departure end of rwy, 846'  
right of centerline, 120' AGL/149' MSL.  
Flagpole 2511' from departure end of rwy,  
700' left of centerline, 90' AGL/116' MSL.

SW-3, 25 OCT 2007 to 22 NOV 2007

SW-3, 25 OCT 2007 to 22 NOV 2007



#ATC minimum climb of 431' per NM  
to 14000' required to meet MELDY INT  
crossing restriction.

#14000 for aircraft  
climbing to 14000  
or above

NOTE: RADAR required.

NOTE: Aircraft climbing above 13000' expect radar  
vectors northwestbound prior to PEBLE.

NOTE: Chart not to scale.

### DEPARTURE ROUTE DESCRIPTION

**TAKE-OFF RUNWAY 27:** Climbing right turn via heading 290° until crossing OCN VORTAC R-170, then turn right via heading 305° to intercept and proceed via via MZB VORTAC R-293 to PEBLE INT. Aircraft climbing to 14000' or above, cross MELDY INT at or above 14000'. Then via (transition) or (assigned altitude). Maintain assigned altitude.

**SANTA CATALINA TRANSITION (PEBLE3.SXC):** From over PEBLE INT via SXC R-096 to SXC VORTAC.

**SEAL BEACH TRANSITION (PEBLE3.SLI):** From over PEBLE INT via SLI R-148 to SLI VORTAC.

# PEBLE THREE DEPARTURE