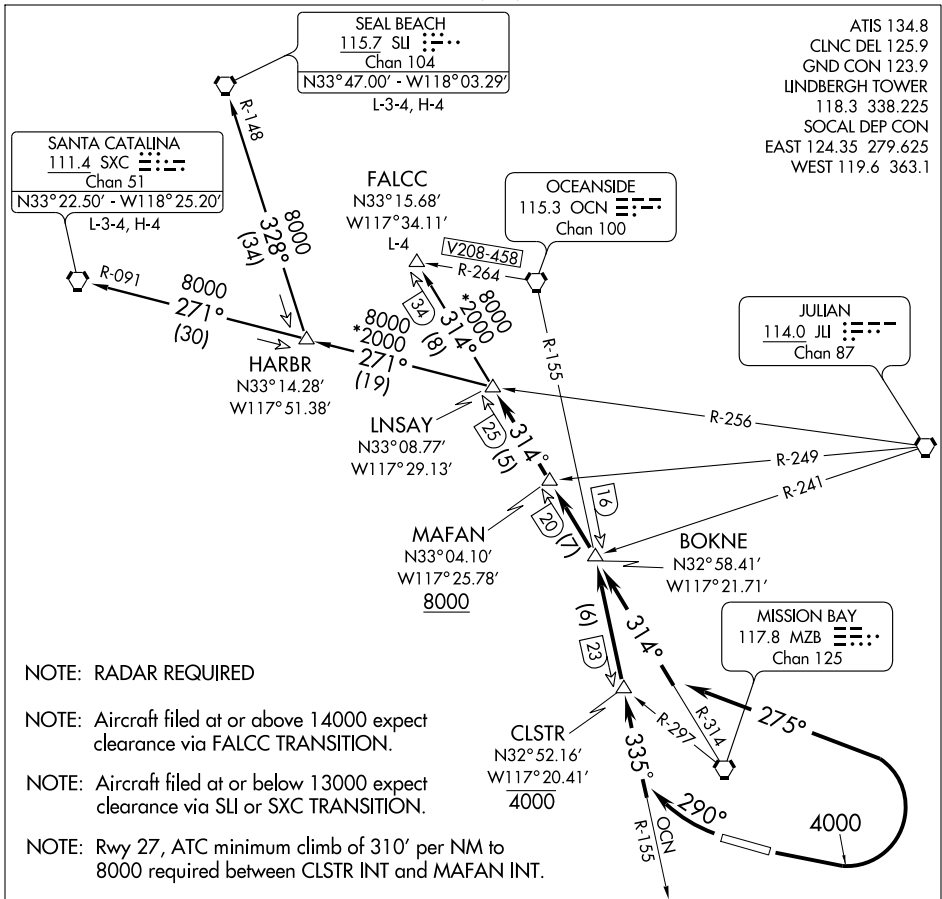


# LNSAY TWO DEPARTURE

SL-373 (FAA)

SAN DIEGO INTL (SAN)  
SAN DIEGO, CALIFORNIA



NOTE: RADAR REQUIRED

NOTE: Aircraft filed at or above 14000 expect clearance via FALCC TRANSITION.

NOTE: Aircraft filed at or below 13000 expect clearance via SLI or SXC TRANSITION.

NOTE: Rwy 27, ATC minimum climb of 310' per NM to 8000 required between CLSTR INT and MAFAN INT.

### TAKE-OFF MINIMUMS

Rwy 9, 300-1 with minimum climb of 610' per NM to 1900.

Rwy 27, 300-1½ or standard with minimum climb of 317' per NM to 400.

### TAKE-OFF NOTES

- Rwy 9:** Trees 792 feet from departure end of runway, 142 feet left of centerline, 60' AGL/99' MSL.  
Antenna 740 feet from departure end of runway, 302 feet right of centerline, 62' AGL/82' MSL.  
Antenna 1946 feet from departure end of runway, 969 feet left of centerline, 126' AGL/192' MSL.  
Trees 1377 feet from departure end of runway, 285 feet left of centerline, 80' AGL/135' MSL.  
Trees 4625 feet from departure end of runway, 1414 feet left of centerline, 250' AGL/385' MSL.
- Rwy 27:** Trees 1 mile from departure end of runway, 685 feet right of centerline, 220' AGL/253' MSL.  
Trees 3118 feet from departure end of runway, 846 feet right of centerline, 120' AGL/149' MSL.  
Flagpole 2511 feet from departure end of runway, 700 feet left of centerline, 90' AGL/116' MSL.

NOTE: Chart not to scale.

(NARRATIVE ON FOLLOWING PAGE)

# LNSAY TWO DEPARTURE

SW-3, 02 JUL 2009 to 30 JUL 2009

SW-3, 02 JUL 2009 to 30 JUL 2009