



Airport Noise Mitigation Aircraft Noise Complaint Log October 2012

Event Date & Time Neighborhood City, State Zip Code	Comments	Resolution Comments
10/05/2012 @ 0017L Loma Portal San Diego, CA 92106	Good morning, I'd like to register a noise complaint, I was woken up at 12:17 in the morning on Friday, October 5th, by a jetliner departing out of Lindbergh Field to the west over our house. If this was a go-around due to an unstable approach, then there's no need to call me, thank you, bye.	Caller did not request a call back. The operation was a missed approach on Runway 27. Arrivals are permitted 24-hours a day.
10/05/2012 @ 0932L Ocean Beach San Diego, CA 92107	This aircraft, N248DP, a SF34, came over my house. I've tried to begin a discussion with the folks for Noise Mitigation for these early turns. Please note this one for your database, and I'd like to find out what is being done to help mitigate the number of early turns out of San Diego International Airport.	Caller was informed of Air Traffic Control procedures and that the aircraft, a Saab 340 turboprop, a non-runway heading departure, followed all prescribed departure procedures.
10/05/2012 @ 2152L Loma Portal San Diego, CA 92106	Hello, I recently purchased my home in Loma Portal and find the airport noise very disturbing. Is it possible to get a noise analysis so I can understand why my house is not within the area that is being provided with noise reduction features? I think my street is a few streets beyond the current identified area being retrofitted. I am trying to understand air noise measurements around my house. I would appreciate being advised how I can get past and current noise level measurements for the area map that includes my house to understand why my house is outside the covered noise retrofit area that provides noise reduction windows. Thank you.	Caller was provided with information on aircraft noise levels and referred to the Quieter Home Program.
10/08/2012 @ 1610L Ocean Beach San Diego, CA 92107	I would like to have you send me a schedule of when your planes are leaving and arriving at the airport. We're going to be doing some filming here in Ocean Beach and we'd like to know when we can do it without getting a mess of planes making noise. Really appreciate you sending me this information, thank you, bye-bye.	Caller was provided the requested information.



10/09/2012 @ 0500L
Uptown
San Diego, CA 92101

The planes fly over my home constantly and I've been here seven years. I just have a question, is there a curfew on how early the planes can land? A lot of times at five o'clock in the morning these big ol' airplanes fly over my house and wake us up every morning. You never really get used to it, because some nights the noise is just really powerful. Anyway, I was just curious, is there a curfew, the time that they can land or takeoff. Could someone call me back if they get a chance? This happens quite often, it's not a periodic thing, it mostly happens every other day. Thank you.

Caller was informed of the Airport Use Regulations, Time of Day Restrictions, and that arrivals are permitted 24-hours a day.

10/09/2012 @ 1257L
Loma Portal
San Diego, CA 92106

Ever since the Quieter Home Program completed the Loma Portal Phase 2 work, it seems there has been an ever increasing frequency of planes taking off and veering south as soon as they cross Rosecrans Street. We live two and a half blocks south of the 270 takeoff, and have daily flights from many airlines who pass directly over the house in Loma Portal. Why are they no longer accountable for the 270 compass reading takeoff until they are over water?

Caller was informed of Air Traffic Control procedures and that the aircraft followed all prescribed departure procedures.

10/09/2012 @ 1527L
Point Loma
San Diego, CA 92107

Within the past few moments we had a plane flying at a very low altitude south of my home in Point Loma. You could hear the plane try to get some more altitude coming over the houses. Can you please find out the reason for their flying off course?

Caller was informed of Air Traffic Control procedures and that the operation, a non-runway heading missed approach, followed all prescribed arrival procedures.

10/10/2012 @ 2002L
Point Loma
San Diego, CA 92106

There was a flight at about 8:00 p.m. yesterday, last evening, and it flew over La Playa, which is way off course as to where the flights should fly, and it was also noisy and very low. I would like a call back please to find out more about this airplane. If you could give me a call please, thank you.

Caller was informed of Air Traffic Control procedures and that the operation, a non-runway heading missed approach, followed all prescribed arrival procedures.

10/10/2012 @ 2002L
Point Loma
San Diego, CA 92106

I'm calling to report a really loud plane that just flew directly over my house at about 8:00 p.m. It looked like it was going to land on my roof, and the noise coming from the plane was terrible. I need someone to call me back.

Caller was informed of Air Traffic Control procedures and that the operation, a non-runway heading missed approach, followed all prescribed arrival procedures.

10/11/2012 @ 1107L
Point Loma
San Diego, CA 92107

It's a little bit after eleven on Thursday, October 11th. I want to know why the planes are going so far south. Last time I didn't get a call back, so I'd appreciate one this time.

Caller was informed of Air Traffic Control procedures and that the aircraft was a non-runway heading departure to avoid inclement weather.



10/11/2012 @ 1109L
Ocean Beach
San Diego, CA 92107

Yeah, it's October 11th at about 11:09 a.m., I had a plane flying to the south of the house. Absolutely no reason for that, this is just one of many times lately this is happening. There's no other planes in sight, there's no other planes in the area, why they can't come directly off the end of the runway? I'd like a call back, thank you.

Caller was informed of Air Traffic Control procedures and that the aircraft was a non-runway heading departure to avoid inclement weather.

10/11/2012 @ 1115L
Loma Portal
San Diego, CA 92106

Hi, I'm familiar with the departure paths and I know that there can be variances, but for the first time I saw a plane fly directly over my house in Loma Portal, Southwest Airlines at 11:15 a.m. today, Thursday, and I just wondered what the necessity was for that modified departure. Thanks for the call back.

Caller was informed of Air Traffic Control procedures and that the aircraft was a non-runway heading departure to avoid inclement weather.

10/13/2012 @ 2103L
Point Loma
San Diego, CA 92107

At 9:03 p.m. another flight flying far south and very loud.

Caller lives one mile south of the extended runway centerline. The aircraft, a Boeing 777, flew the prescribed runway heading departure.

10/14/2012 @ 2145L
Pacific Beach
San Diego, CA 92109

It's October 14th at 9:45 p.m. and the controllers sent a jet over my house, and it was so loud I couldn't hear what was being said on TV. So, that's a little on the loud side for living in Pacific Beach and having a jet takeoff to the east, you know, low and loud. And I wonder if there will be any more tonight. Then you add the police helicopter in with it, it's just a very bad, noisy area around here, and I don't really live near an airport, to speak of. So anyway, tell them to stop doing it, because they did for a while, thank you very much, bye.

Caller did not request a call back. The aircraft followed all prescribed departure procedures.

10/15/2012 @ 1350L
Golden Hill
San Diego, CA 92102

In regards to the planes going over our house, and shaking the house, we can hear the planes going over all day and night. Thank you.

Caller did not request a call back. The aircraft followed all prescribed arrival procedures.



10/16/2012 @ 1019L
Uptown
San Diego, CA 92101

I'm calling about a really loud noise from one of your airplanes that is flying overhead. The flight passed over my house at 10:19 in the morning on Tuesday, October 16th. What I'm calling about is the loudness of this plane. I don't know, this comes in once in a while, and I don't know if this is a private one or a commercial one, but it is, the engines are so loud, deafening. Something needs to be done about this plane coming into this airport. The larger ones, I have no problem with, but this plane, I don't know. I was in my house when it happened, I didn't get the chance to look up to see whether it was a private plane or a commercial, but it did pass over my house at 10:10 a.m., so I assume it landed a few seconds or a minute later. I will talk to you later.

Caller was informed of Air Traffic Control procedures and that the aircraft, a Stage 3 Boeing 757, followed all prescribed arrival procedures.

10/17/2012 @ 1050L
Point Loma
San Diego, CA 92107

We had another non-compliant departure earlier this morning, sometime around 10:50 a.m. What was the reason?

Caller was informed that the aircraft was a non-runway heading departure to maintain separation from a missed approach on Runway 27.

10/17/2012 @ 2245L
Point Loma
San Diego, CA 92106

On October 17th at 10:45 in the evening, a plane flew over our house at a low altitude, that to me is around about 1,500 feet. Thank you.

Caller did not request a call back. The aircraft, a non-runway heading missed approach, followed all prescribed arrival procedures.

10/18/2012 @ 0338L
Loma Portal
San Diego, CA 92106

I would like to complain about the noise at about 3:38 a.m. on October 18th. I believe it was either the FedEx jet taking off or landing, I think it usually lands at that hour, extremely low coming in from the west, extremely noisy, very, very low, almost dangerously low, and awakened my wife and I. Please give me a call back, thank you.

Caller was informed that the operation was an arrival into NAS North Island that used SDIA's Runway 09 approach. Referred the caller to NAS North Island for more information.

10/18/2012 @ 0338L
Ocean Beach
San Diego, CA 92107

I would like to complain about airplane noise very early this morning at about 3:30 a.m. Incredibly low flying aircraft of some kind, over my house, the whole house rattled at 3:38 in the morning and woke everybody up. I would like a return call to find out what to do about this kind of thing, thank you, bye.

Caller was informed that the operation was an arrival into NAS North Island that used SDIA's Runway 09 approach. Referred the caller to NAS North Island for more information.

10/18/2012 @ 0338L
Loma Portal
San Diego, CA 92106

My complaint is for October 18th at about 3:38 a.m. The airplane was so loud it woke me up and I thought we were going to have a crash, I was just expecting it to boom. It was the loudest I've ever heard. I guess that's it, please call me back, thanks, bye.

Caller was informed that the operation was an arrival into NAS North Island that used SDIA's Runway 09 approach. Referred the caller to NAS North Island for more information.



10/18/2012 @ 0338L
Loma Portal
San Diego, CA 92106

I would like to make a complaint about the airplane that almost came through my house at 3:38 this morning. Please return my call, either at work or home, bye.

Caller was informed that the operation was an arrival into NAS North Island that used SDIA's Runway 09 approach. Referred the caller to NAS North Island for more information.

10/18/2012 @ 0338L
Loma Portal
San Diego, CA 92106

Hi, I just want to file a complaint, or question, about something that just flew over our house. I looked at the clock, it was 3:38 when it went over, and it literally shook the house and sounded like it was really, really low. Woke us all up. We're in Loma Portal, so we are in the flight path and we've lived under it for 40 years, we're used to it, but this reminded me of when the great big Russian Antonov plane came over during the America's Cup. It just was very, very loud and very, very vibrating and very unsettling. Anyway, could somebody please return the call, this is about 3:50 on Thursday morning, October 18th. Anyways, so if somebody could call me, sometime tomorrow, just to let me know that you got the complaint, alright. I'd be surprised if you don't have a bunch of complaints on this one, unless people are just sleeping through it, but it was loud, thanks, bye.

Caller was informed that the operation was an arrival into NAS North Island that used SDIA's Runway 09 approach. Referred the caller to NAS North Island for more information.

10/18/2012 @ 0338L
Loma Portal
San Diego, CA 92106

Hello, I had a plane come over last night at my house, and it was at about 3:38 a.m. I thought it was going to crash. It was the loudest, lowest airplane I have ever heard in my life. I would like a call back, I'm not at all happy about that, thank you.

Caller was informed that the operation was an arrival into NAS North Island that used SDIA's Runway 09 approach. Referred the caller to NAS North Island for more information.

10/18/2012 @ 0338L
Loma Portal
San Diego, CA 92106

Hello, I was terrorized this morning, October 18th, with a plane, which I assume was FedEx, startling me at about 3:38 in the morning, literally going down our street, and low. It was frightening, I thought I was going to literally die. Then the planes kept going on through 6:30 a.m., when they started taking off. It's getting outrageous, and I have good windows. It was a frightening experience to have happen at about 3:30, I think it was 3:30 in the morning, and I've been awake since then. It's just very upsetting. I don't know what's happening at the airport that all these planes are suddenly becoming a problem, thank you.

Caller was informed that the operation was an arrival into NAS North Island that used SDIA's Runway 09 approach. Referred the caller to NAS North Island for more information.



<p>10/18/2012 @ 0339L Loma Portal San Diego, CA 92106</p>	<p>I want to complain about a departure from Lindbergh Field at 3:39 am. on October 18th. I would like an explanation, and I'm sure a rationalization from you all, but never the less, there was an airplane that went out outside of the curfew. Thank you.</p>	<p>Caller was informed that the operation was an arrival into NAS North Island that used SDIA's Runway 09 approach. Referred the caller to NAS North Island for more information.</p>
<p>10/18/2012 @ 0339L Liberty Station San Diego, CA 92106</p>	<p>On October 18th at 3:39 a.m. a very loud plane flew over and woke me from a sound sleep. This was very disturbing.</p>	<p>Caller was informed that the operation was an arrival into NAS North Island that used SDIA's Runway 09 approach. Referred the caller to NAS North Island for more information.</p>
<p>10/18/2012 @ 0505L Ocean Beach San Diego, CA 92107</p>	<p>My complaint is for a plane, I believe taking off this morning at 5:05 a.m. on October 18th. Thank you.</p>	<p>Caller was informed that the operation was an arrival on Runway 09. Arrivals are permitted 24-hours a day.</p>
<p>10/18/2012 @ 0731L Uptown San Diego, CA 92101</p>	<p>There was a loud plane noise at 7:31 a.m., October 18th, and I'm documenting it for measurement and calibration.</p>	<p>Caller was informed of Air Traffic Control procedures and that the aircraft, a Southwest Airlines Boeing 737, followed all prescribed arrival procedures.</p>
<p>10/18/2012 @ 1546L Golden Hill San Diego, CA 92104</p>	<p>Yes, I have been noticing a plane, and it just landed, it is Thursday, October 18th, at 3:46 in the afternoon, and this is about the third time I've noticed it. It went directly over my house, I am not in the flight pattern, and I'm just reporting this because it just started. As I said, I think the other time that it happened this week was like Tuesday at about 12:10 p.m. So, yes, I'm reporting this, okay, thank you.</p>	<p>Caller was informed of Air Traffic Control procedures and that the aircraft, a Southwest Airlines Boeing 737, followed all prescribed arrival procedures.</p>
<p>10/19/2012 @ 0756L Ocean Beach San Diego, CA 92107</p>	<p>Hi, and I was calling to complain about some aircraft noise, today is October 19th, the time is 7:56 a.m., and the plane basically flew right over our house. So, in any event, if someone wants to give me a shout back, that's fine, thank you.</p>	<p>Caller was informed of Air Traffic Control procedures and that the operation was an "Early Turn" departure. The flight track will be sent to the FAA for evaluation.</p>



10/20/2012 @ 0026L
Famosa
San Diego, CA 92107

Yes, good morning, it's 12:30 a.m. on October 20th. I went to bed right around midnight, just fell asleep, at about 12:26. Had a loud jet flying over Ocean Beach, this is the second night in a row. Last night I was awake, and it wasn't that far after the curfew, it was around 11:40 p.m. or so when your US Airways Flight 66 flew over, but tonight it's past, or approaching 12:30 a.m., and this was a much louder, heavier jet taking off. Don't know what good this does, cause this happens all the time, and I know emergency flights can do this, but that sounded more like a heavy commercial aircraft or something.

Caller was informed of the Airport Use Regulations, Time of Day Restrictions, and that a Curfew Violation occurred. Explained the violation review procedures.

10/21/2012 @ 1330L
La Jolla
San Diego, CA 92037

At 1:30 p.m. today, from about 1:25 to 1:30, an aircraft, a military helicopter, with what looked like military equipment on it, went directly over our house. It was very frightening. I see no reason for this aircraft to go directly over our house. The house shook, and it was frightening. Please ask them to stop this, they are to fly out at sea, not over our house. Please call me back, I'd appreciate it. We've approached this many times, and we ask that it stops. Thank you, please call back.

Caller was informed of Air Traffic Control procedures and that the helicopter was a US Navy NAS North Island operation. Referred the caller to NAS North Island.

10/25/2012 @ 2337L
Spring Valley
Spring Valley, CA
91977

At 11:37 p.m. on October 25th, United Airlines Flight 289 flew over and the plane seemed louder than normal.

Caller was informed of Air Traffic Control procedures and that the aircraft, a Stage 3 Airbus A320, followed all prescribed arrival procedures.

10/28/2012 @ 0614L
Loma Portal
San Diego, CA 92106

Good morning, I would like to register a noise complaint of a jetliner departing out of Lindbergh Field, to the west, during curfew hours at 6:14 on Sunday morning, October 28th. If this was a missed approach or rejected landing, no reason to call, thanks, bye.

Caller did not request a call back. The operation was a missed approach on Runway 27. Arrivals are permitted 24-hours a day.

10/28/2012 @ 0614L
Liberty Station
San Diego, CA 92106

I live in Liberty Station and have been here for almost two years. This morning I was awakened by a flight at around 6:14 a.m. that was departing. I also heard another leave shortly before 6:30 a.m. Both surprised me because I had all my bedroom windows closed this morning and have never looked at my nightstand clock and thought, "geez, that's loud and an early departure!" I'm curious, did you get a violation reported on your electronic system this morning? Thank you for all your hard work, and have a great upcoming holiday season.

Caller was informed that the operation was a missed approach and arrival on Runway 27. Arrivals are permitted 24-hours a day.





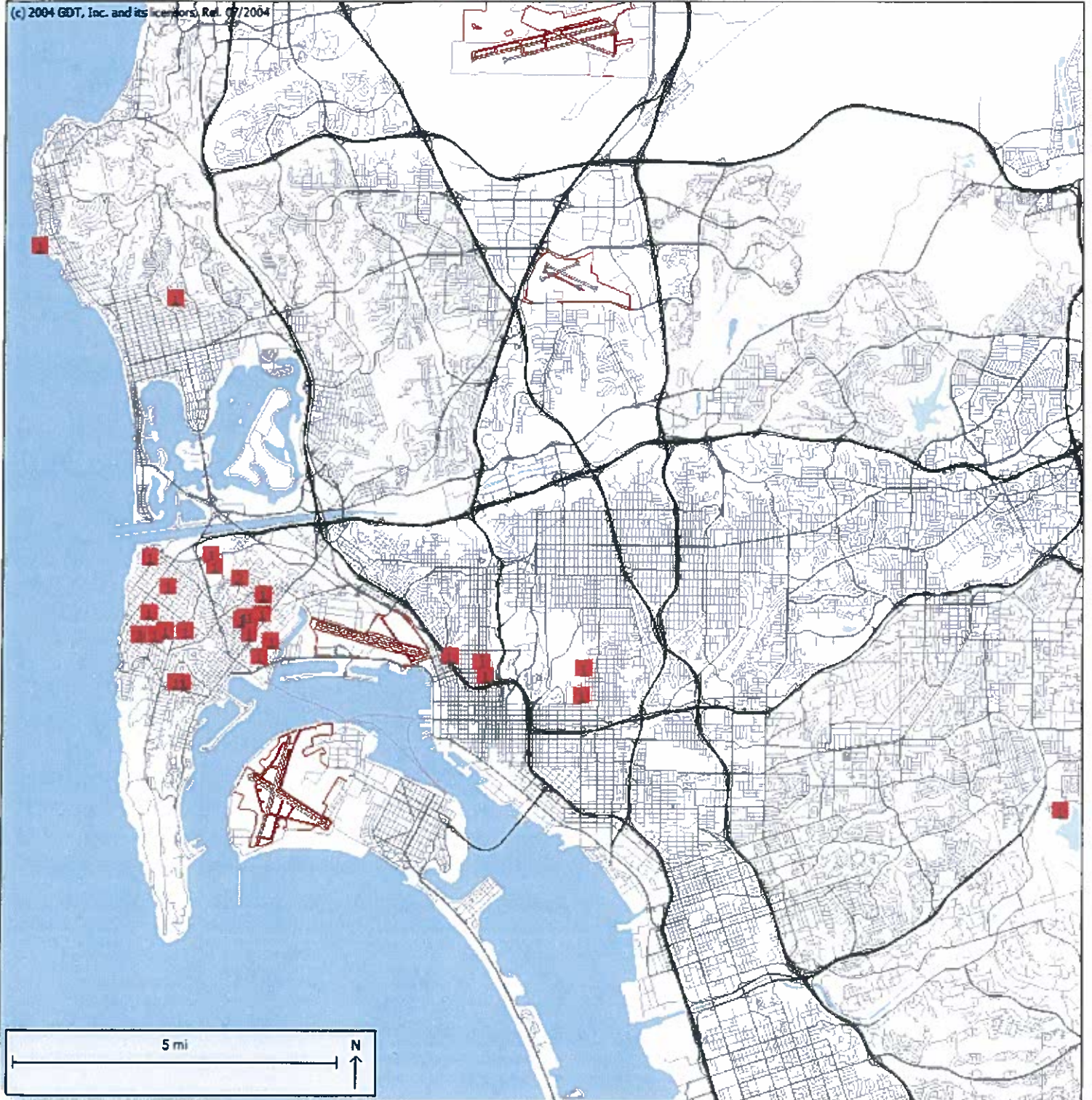
October 2012

Aircraft Noise Complaint Caller's Location in relation to
San Diego International Airport (SDIA)
31 Households; 36 Complaints



**SAN DIEGO
INTERNATIONAL
AIRPORT**

(c) 2004 GDT, Inc. and its licensors, Rev. 07/2004



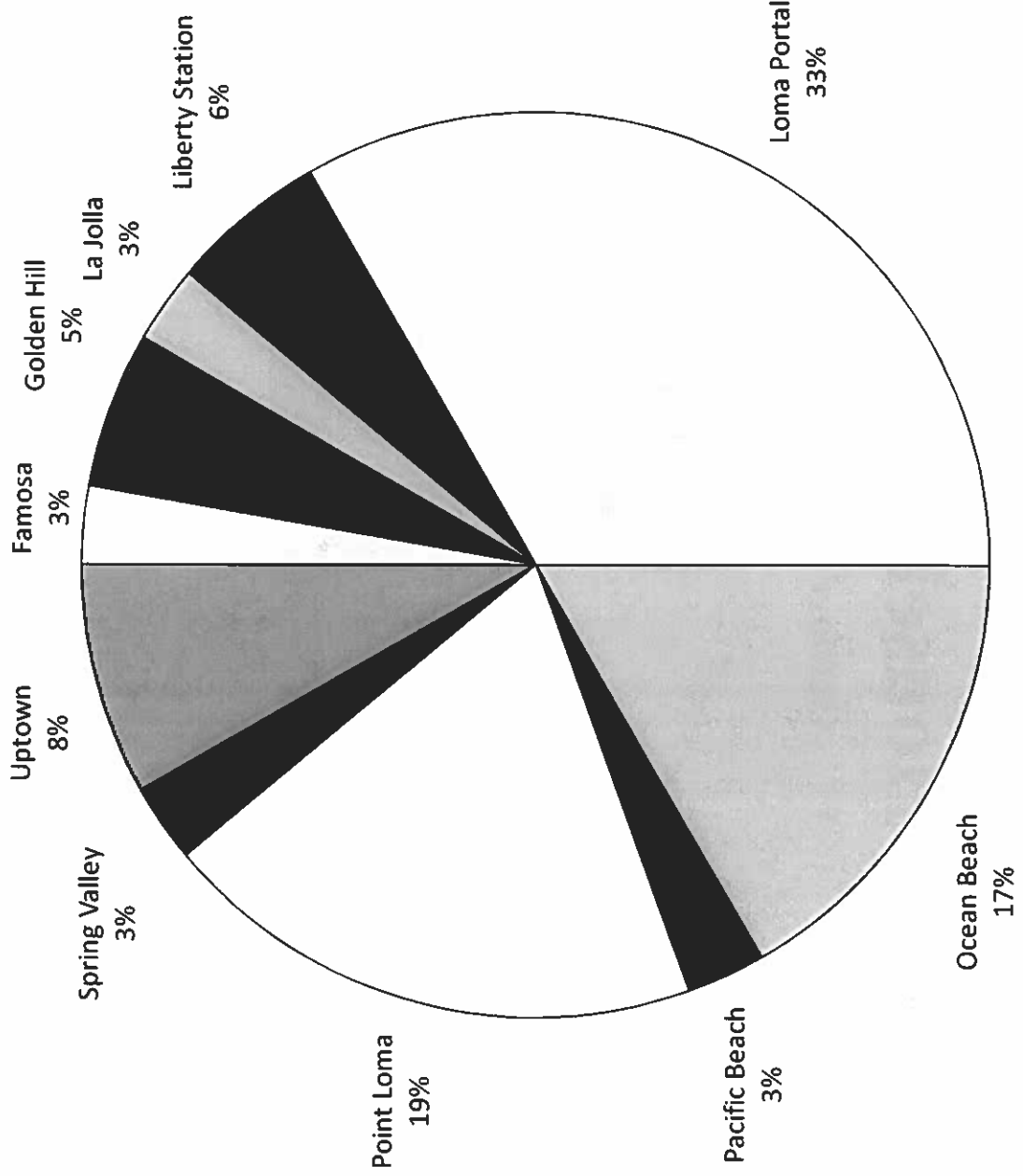
Aircraft Noise Complaint Distribution by Neighborhood



SAN DIEGO
INTERNATIONAL
AIRPORT

October 2012

TOTAL CALLS: 36



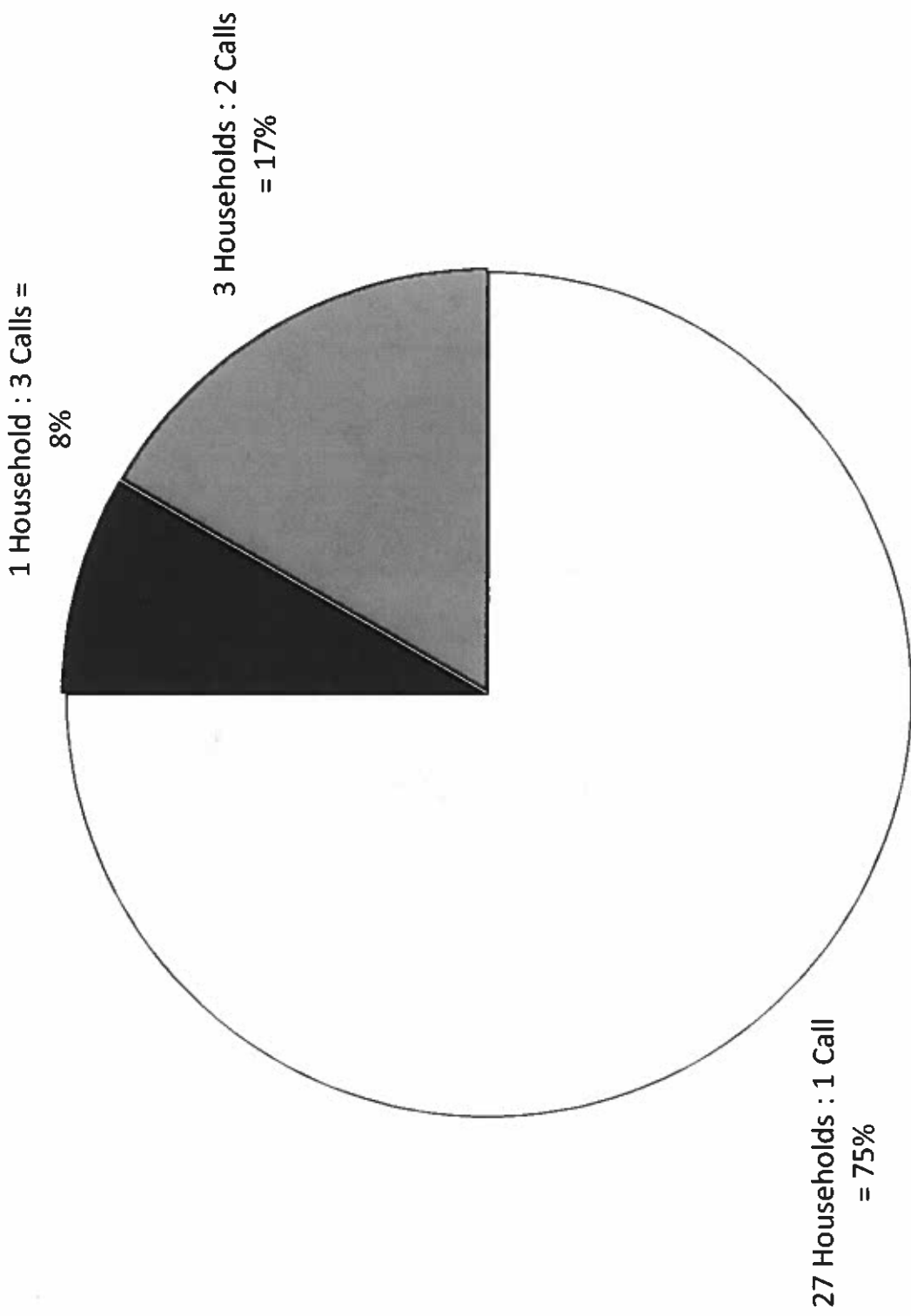
Aircraft Noise Complaint Distribution by Household



SAN DIEGO
INTERNATIONAL
AIRPORT

October 2012

TOTAL CALLS: 36



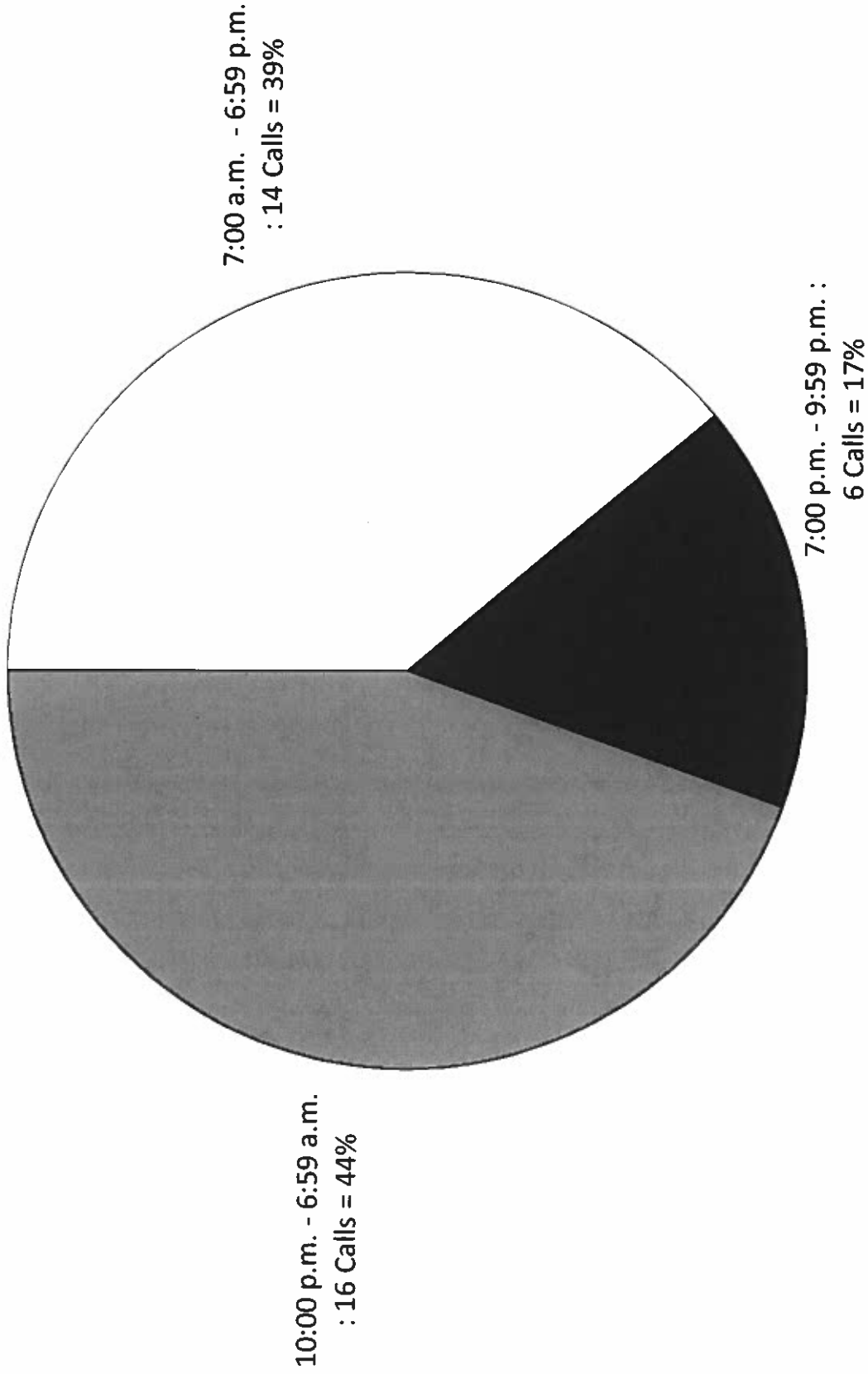
Aircraft Noise Complaint Distribution by Time of Day



SAN DIEGO
INTERNATIONAL
AIRPORT

October 2012

TOTAL CALLS: 36



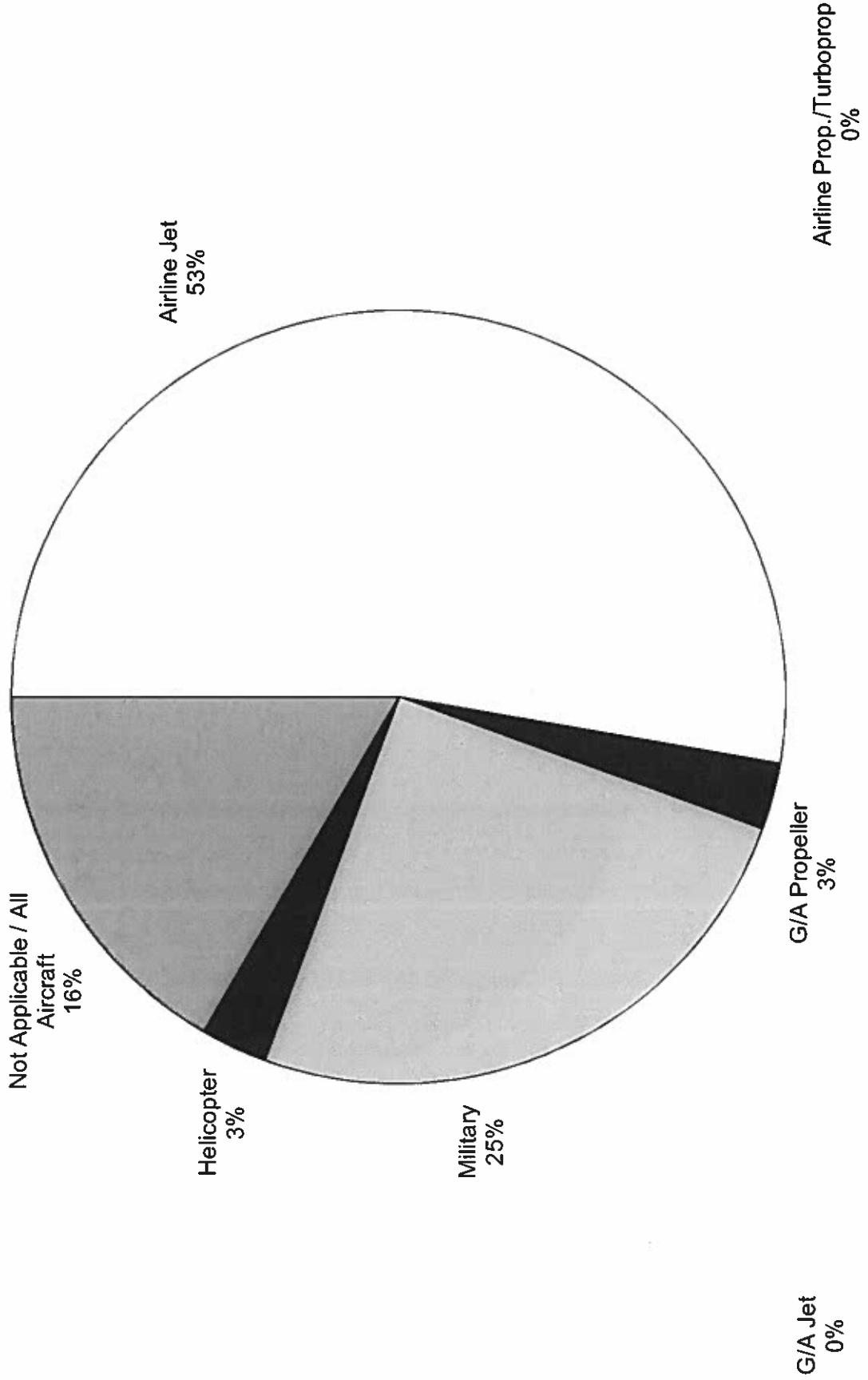
Aircraft Noise Complaint Distribution by Aircraft Type



SAN DIEGO
INTERNATIONAL
AIRPORT

October 2012

TOTAL CALLS: 36



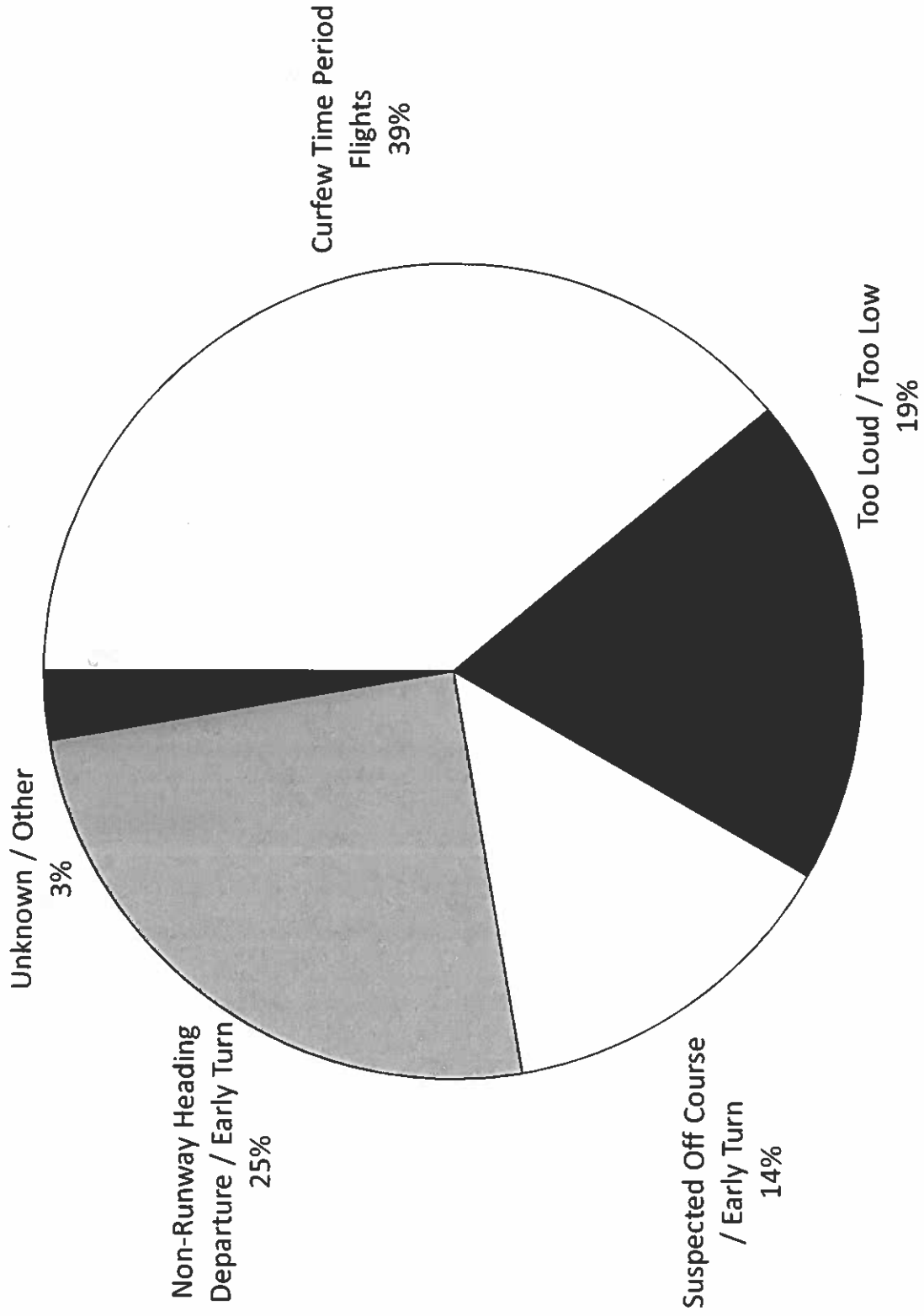
Aircraft Noise Complaint Distribution by Cause



SAN DIEGO
INTERNATIONAL
AIRPORT

October 2012

TOTAL CALLS: 36



**Aircraft Noise Complaint Distribution By Neighborhood
San Diego International Airport
Summary of Aircraft Noise Complaints - 2012**

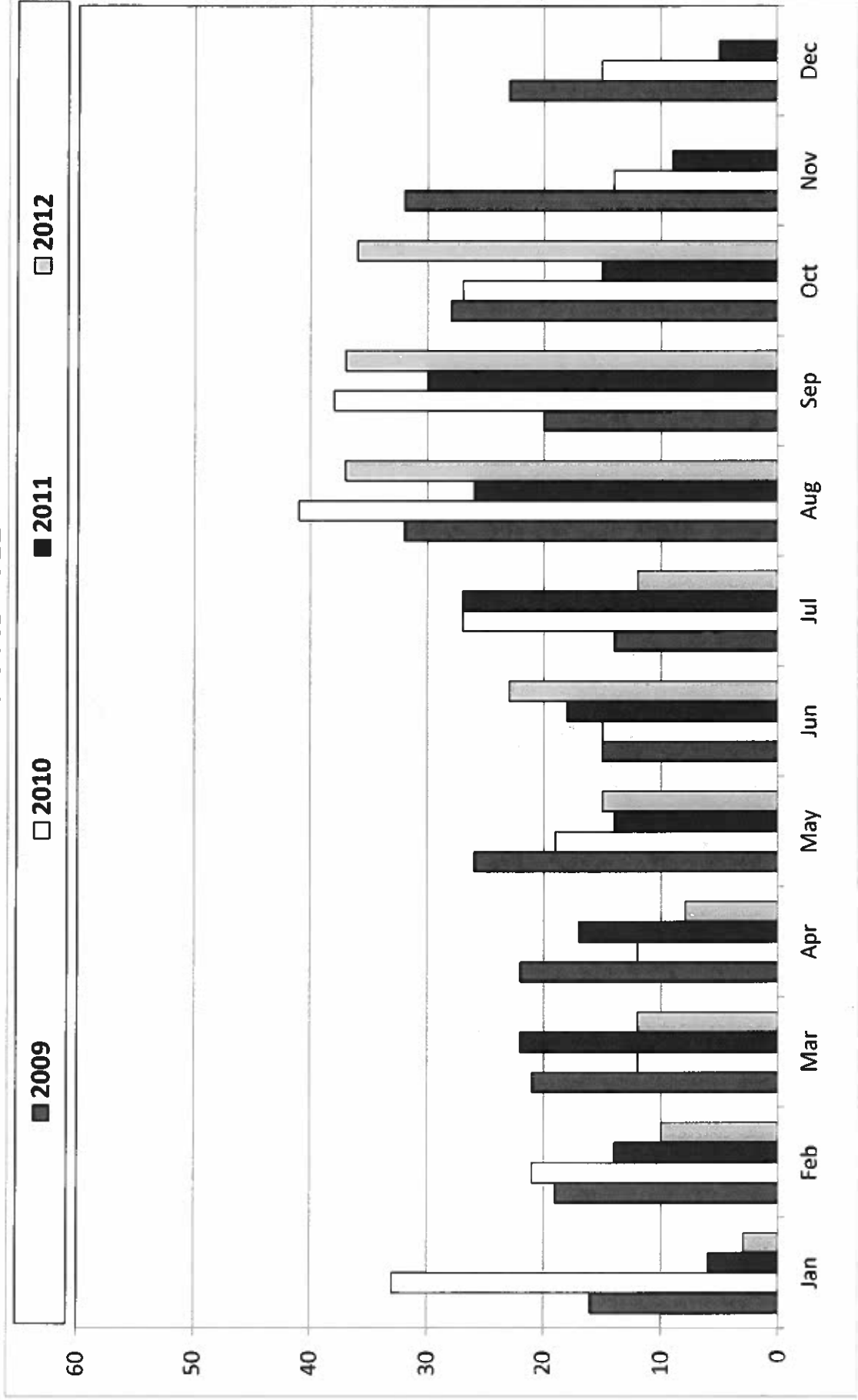
NEIGHBORHOOD	JAN	FEB	MAR	APR	MAY	JUN	JUL	AUG	SEP	OCT	NOV	DEC	TOTAL
Bay Park													0
Bonita													0
Chollas Creek								2					2
Chula Vista							1						1
Clairemont													0
College Area									1				1
Coronado													0
County of S.D.													0
Del Cerro													0
Downtown S.D.													0
El Cajon													0
Encanto/Lomita													0
Famosa				1		1		3	2	1			8
Golden Hill		2	1		1	2	2	1	1	2			12
Hillcrest								1					1
La Jolla							1			1			2
Lakeside													0
La Mesa													0
Lemon Grove													0
Liberty Station										2			2
Loma Portal	3	3	1	1	1	10	1	4	7	12			43
Middletown				1			1		1				3
Midway								1					1
Mission Beach								3	1				4
Mission Hills													0
Mount Hope									1				1
Mountain View													0
Normal Heights													0
North Park													0
Ocean Beach		1	3	1	4	6	1	5	8	6			35
Pacific Beach			1				1			1			3
Paradise Hills													0
Point Loma		4	5	3	9	4	4	13	15	7			64
Rolando													0
South Park			1	1									2
Spring Valley										1			1
Talmadge													0
University City													0
University Heights								4					4
Uptown										3			3
TOTAL	3	10	12	8	15	23	12	37	37	36	0	0	193

Monthly Aircraft Noise Complaints



SAN DIEGO
INTERNATIONAL
AIRPORT

2009 – October 2012

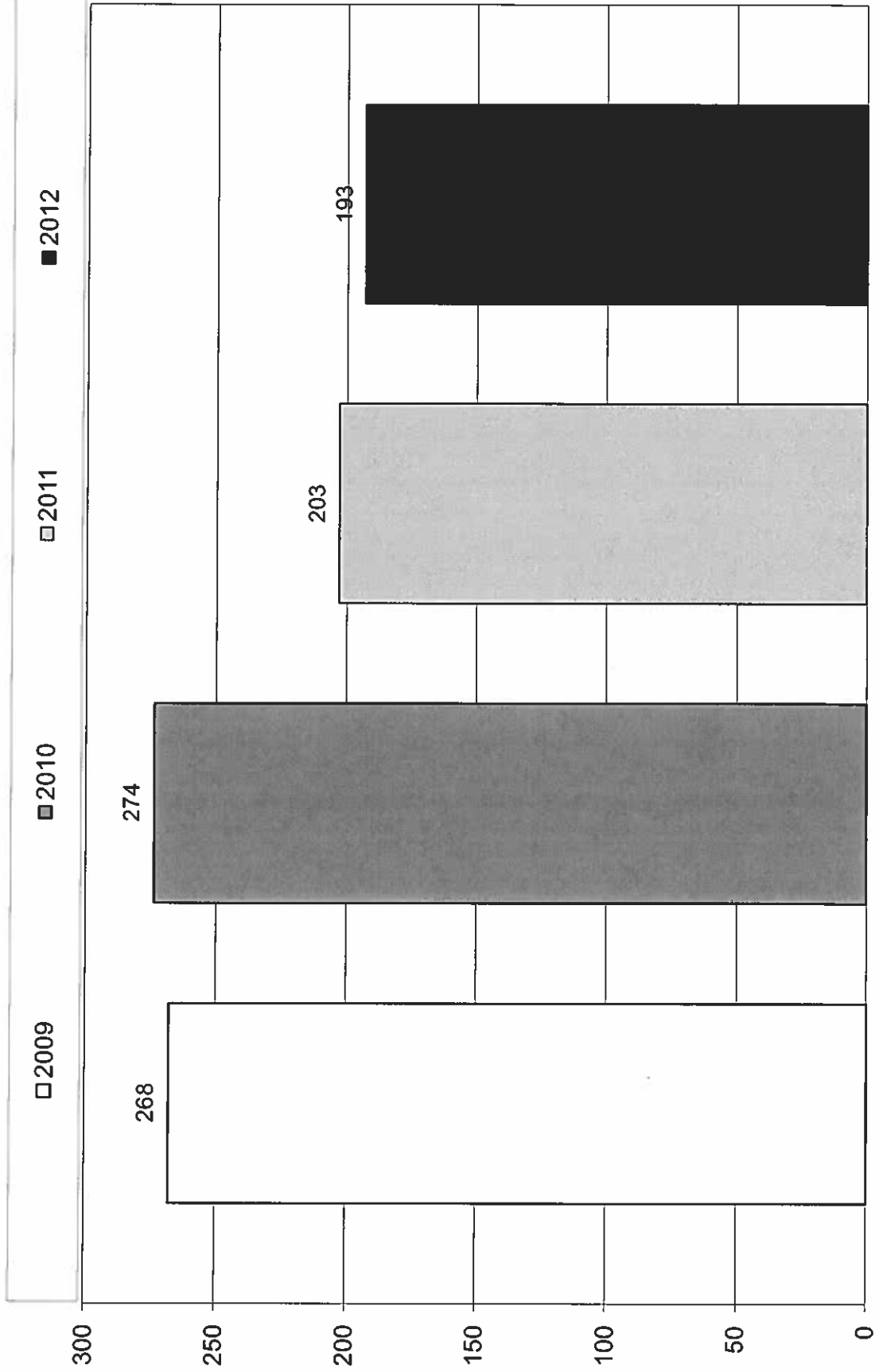


Annual Aircraft Noise Complaints



SAN DIEGO
INTERNATIONAL
AIRPORT

2009 – 2012 (October)





Airport Noise Mitigation Aircraft Noise Complaint Log November 2012

Event Date & Time
Neighborhood
City, State Zip Code

Comments

Resolution Comments

11/03/2012 @ 0858L
Point Loma
San Diego, CA 92107

An airplane just flew directly over my house, it's Saturday, November 3rd, at 8:58 in the morning, and if that's going to be the case, then I'd like to apply for some sort of subsidy to help me improve my windows. My house was built in 1931, and it's very inefficient, and if I'm going to have jets flying over my home, I would like some help with my windows. I was told that this wasn't going to happen, but it keeps happening. So, I would like someone to give me a call back.

Caller was informed of Air Traffic Control procedures and that the operation, a non-runway heading missed approach, followed all prescribed arrival procedures.

11/03/2012 @ 0858L
Point Loma
San Diego, CA 92107

There were two flights that left me very concerned, one this morning at about 8:58 a.m., it was very low and flew directly over my home and Warren Walker School. Then Thursday morning, at around 7:50 a.m., another plane, although I did not see it, I could hear that it was off course. Were there reasons for this?

Caller was informed of Air Traffic Control procedures and that the operation, a non-runway heading missed approach, followed all prescribed arrival procedures.

11/07/2012 @ 0437L
Loma Portal
San Diego, CA 92106

Good morning, I'd like to register a noise complaint, I was woken up by a jet departure during curfew hours, departing Lindbergh Field to the west at 4:37 a.m. on November 7th. There's no reason to call me if it was due to a rejected landing due to an unstable approach. Thanks, bye.

Caller did not request a call back. The operation was a missed approach on Runway 27 by UPS. Arrivals are permitted 24-hours a day.



11/07/2012 @ 0454L
Uptown
San Diego, CA 92101

Good morning, I live in a condo in Banker's Hill. You know, we've been having an issue with the FedEx flights that come in around 5:30 in the morning. For some reason, it seems to be veering further and further to the right, going closer to Laurel Street. It's Wednesday, November 7th. This morning it set off all kinds of car alarms, and stuff, and I'm just concerned that I'm going to die with an airplane. You know, the noise, they're flying low, they're moving further and further north on the path. Would you please check it out? Again, it's the Federal Express thing that comes in a few times a week around 5:30, some times it's earlier, but I just think they're flying too low to some of the condominiums. My condo building is only four stories high, so, that sort of gives you an idea if they're setting off car alarms, they sort of are pushing the limits. If you could please check it, that'd be great, I would appreciate a call back, thank you.

Explained that the operation was a missed approach on Runway 27 by UPS; caller was informed of the Airport Use Regulations, Time of Day Restrictions, and that arrivals are permitted 24-hours a day.

11/07/2012 @ 0540L
Ocean Beach
San Diego, CA 92107

On November 7th at about 5:15 a.m. an aircraft flew over my house, followed by three additional flights, the last one at 5:40 a.m. Why?

Explained that the operations were arrivals on Runway 09 due to weather. Arrivals are permitted 24-hours a day.

11/07/2012 @ 0540L
Ocean Beach
San Diego, CA 92107

Hello, yes, I'm calling to complain about noise this morning, that's November 7th, there were four airlines that flew from about 5:15 to 5:40 a.m., four different aircraft. I want to be called, and I want to know why these airplanes were allowed to fly at this time.

Explained that the operations were arrivals on Runway 09 due to weather. Arrivals are permitted 24-hours a day.

11/09/2012 @ 0650L
Point Loma
San Diego, CA 92107

This morning at 6:47, 6:49, and at 6:50 a.m., which were flying very close to my home. This also brings to mind, how much time is there supposed to be between flights?

Caller was informed of Air Traffic Control procedures and that the aircraft followed all prescribed departure procedures.

11/11/2012 @ 2226L
Spring Valley, CA
91977

The plane at about 10:26 p.m. was much louder than other planes coming in.

Caller did not request a call back. The aircraft, a Hawaiian Airlines Stage 3 Boeing 767-300, followed all prescribed arrival procedures.



<p>11/13/2012 @ 0017L Loma Portal San Diego, CA 92106</p>	<p>At about 12:17 a.m. last night, some big loud plane went over, and that was last night on November 13th. I just wanted to register that complaint, thank you.</p>	<p>Caller did not request a call back. The operation was a Curfew Violation.</p>
<p>11/13/2012 @ 0017L Loma Portal San Diego, CA 92106</p>	<p>Good morning, I'd like to register a noise complaint of a jetliner departing out of San Diego, Lindbergh Field, to the west during curfew hours at 12:17 a.m. on November 13th. Since this was a departure during curfew hours, could you please give me a call, thank you, bye.</p>	<p>Caller was informed of the Airport Use Regulations, Time of Day Restrictions, and that a curfew violation occurred. Explained the violation review procedures.</p>
<p>11/15/2012 @ 2230L Spring Valley, CA 91977</p>	<p>The flight at about 10:30 p.m. created a loud noise over my home.</p>	<p>Caller did not request a call back. The aircraft followed all prescribed arrival procedures.</p>
<p>11/16/2012 @ 1419L Point Loma San Diego, CA 92107</p>	<p>Was there a reason for the flyover that just took place at 2:19 p.m.?</p>	<p>Caller was informed of Air Traffic Control procedures and that the operation was an "Early Turn" departure. The flight track will be sent to the FAA for evaluation.</p>
<p>11/16/2012 @ 2029L Spring Valley, CA 91977</p>	<p>The flight at about 8:29 p.m. created a loud noise over my home.</p>	<p>Caller did not request a call back. The aircraft followed all prescribed arrival procedures.</p>
<p>11/16/2012 @ 2031L Spring Valley, CA 91977</p>	<p>The flight at about 8:31 p.m. created a loud noise over my home.</p>	<p>Caller did not request a call back. The aircraft followed all prescribed arrival procedures.</p>
<p>11/16/2012 @ 2203L Spring Valley, CA 91977</p>	<p>The flight at 10:03 p.m. was an early turn over my house.</p>	<p>Caller did not request a call back. The aircraft followed all prescribed arrival procedures.</p>
<p>11/20/2012 @ 2202L Point Loma San Diego, CA 92107</p>	<p>Is there a time-space that is supposed to take place between takeoffs? Tonight, within the past minute two planes were right on each other's tails, only a few seconds apart. Not to mention yesterday and today, it seems like a few of the planes were far south of the flight path.</p>	<p>Caller was informed of Air Traffic Control procedures. The aircraft flew the prescribed runway heading departure.</p>



11/21/2012 @ 2117L
Ocean Beach
San Diego, CA 92107

Hi, the time of the complaint is 9:17 p.m., so yes, I'm calling to report airport noise. The date is November 21st, the time of the complaint is 9:17 p.m. Feel free to give me a call back if you'd like, thank you.

Caller did not request a call back. The aircraft, a Stage 3 MD-80, followed all prescribed departure procedures.

11/22/2012 @ 0003L
Loma Portal
San Diego, CA 92106

It's 12:03 a.m. and I just had a jet fly over my house, and that's after 11:30 p.m., and I want to register this complaint.

Caller did not request a call back. The operation was a Curfew Violation.

11/24/2012 @ 2345L
Famosa
San Diego, CA 92107

It is now 11:45 p.m., and there have been three planes that have come in within the last 10 minutes over my house. They're flying low, they are loud, and when is a person supposed to get any sleep? The curfew used to be eleven o'clock, you guys have pushed it to 11:30 p.m. And now what are you doing allowing planes to continue flying past 11:30 p.m.? 11:30 p.m. wasn't even agreed to by the people. All of us that live in the area where the planes are constantly bombarding us, with not only the loud decibels, but the vibrations as well. And that, I have to add, is not the only complaint, they also drop their greasy fuel.

Explained that the operations were arrivals on Runway 09 due to weather. Caller was informed of the Airport Use Regulations, Time of Day Restrictions, and that arrivals are permitted 24-hours a day.

11/24/2012 @ 2350L
Famosa
San Diego, CA 92107

More than one plane has gone over head past 11:30 p.m., and that's in violation. So, you can send the fines directly to me, because now I can't sleep. So yeah, somebody can call me, and I don't understand why planes are allowed to be leaving past 11:30 p.m.

Explained that the operations were arrivals on Runway 09 due to weather. Caller was informed of the Airport Use Regulations, Time of Day Restrictions, and that arrivals are permitted 24-hours a day.

11/28/2012 @ 1509L
Golden Hill
San Diego, CA 92104

I live directly on the east side of Balboa Park, and I have called previously regarding this. Again, an airplane landing at, it went over my house at about 3:09 p.m. on Wednesday, November 28th. My house is not in the landing pattern, it obviously had cut short its landing, obviously going directly over my house. So, I'm just reporting this again, thank you.

Caller was informed of Air Traffic Control procedures and that the operation followed all prescribed arrival procedures.



11/29/2012 @ 1835L
University City
San Diego, CA 92122

I am a resident of University City near Miramar and I am contacting your office with a complaint regarding the flight noise and danger. It seems that you have developed a new flight path over our area in recent months, we began hearing and seeing passenger planes flying overhead and creating more than just noise. Just a few minutes ago we experienced such flights that was very low and very noisy. As you well know that a few years ago our neighborhood was hit by a Navy plane heading for Miramar and crashed right near our home. That experience had caused so much harm and damage to our community, in more ways than one, and now we have to deal with passenger planes flying directly over our homes. I think we already have our share of noise and fear from the military planes to have to contend with your planes as well. The passenger planes are new for our area, we began seeing them early this summer and they are flying dangerously close and low. I hope you understand that this issue is very serious with us and realize that our fear is real and it's unfair to have to contend with all this air traffic. Why would you choose an area that is already being abused by flight noise and add to it! I do hope that you will look into this matter and find a remedy. Thank you, and look forward to hearing back from you.

Caller was informed of Air Traffic Control procedures and that no flight path changes have been made. The aircraft followed all prescribed arrival procedures.

11/30/2012 @ 2306L
Famosa
San Diego, CA 92107

At approximately 11:06 p.m. an aircraft flew over the house, this shook the house and rattled windows.

Caller was informed of Air Traffic Control procedures and that the aircraft, a British Airways Boeing 777-200, followed all prescribed departure procedures.



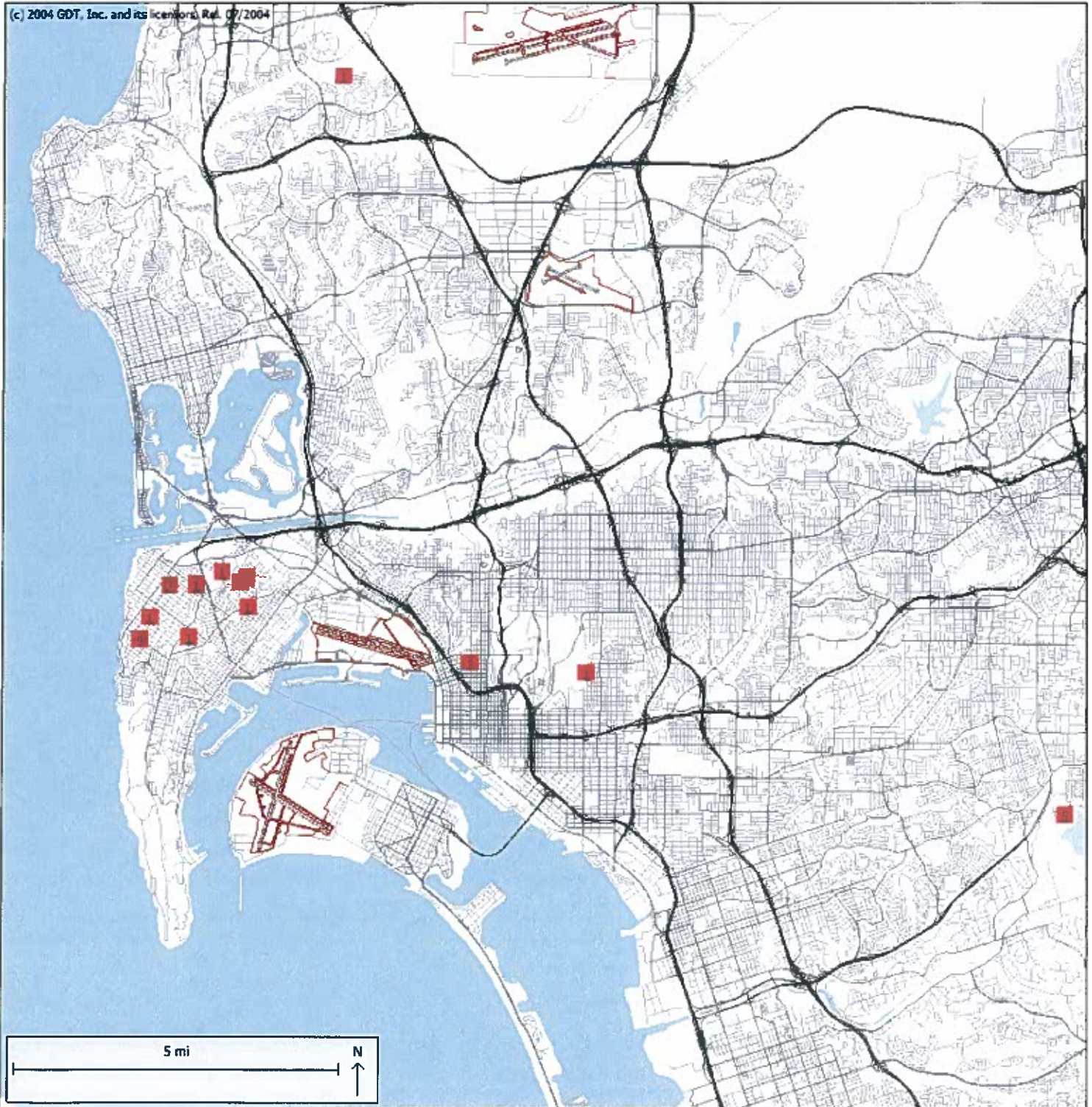


November 2012

Aircraft Noise Complaint Caller's Location in relation to San Diego International Airport (SDIA)
14 Households; 23 Complaints



SAN DIEGO
INTERNATIONAL
AIRPORT



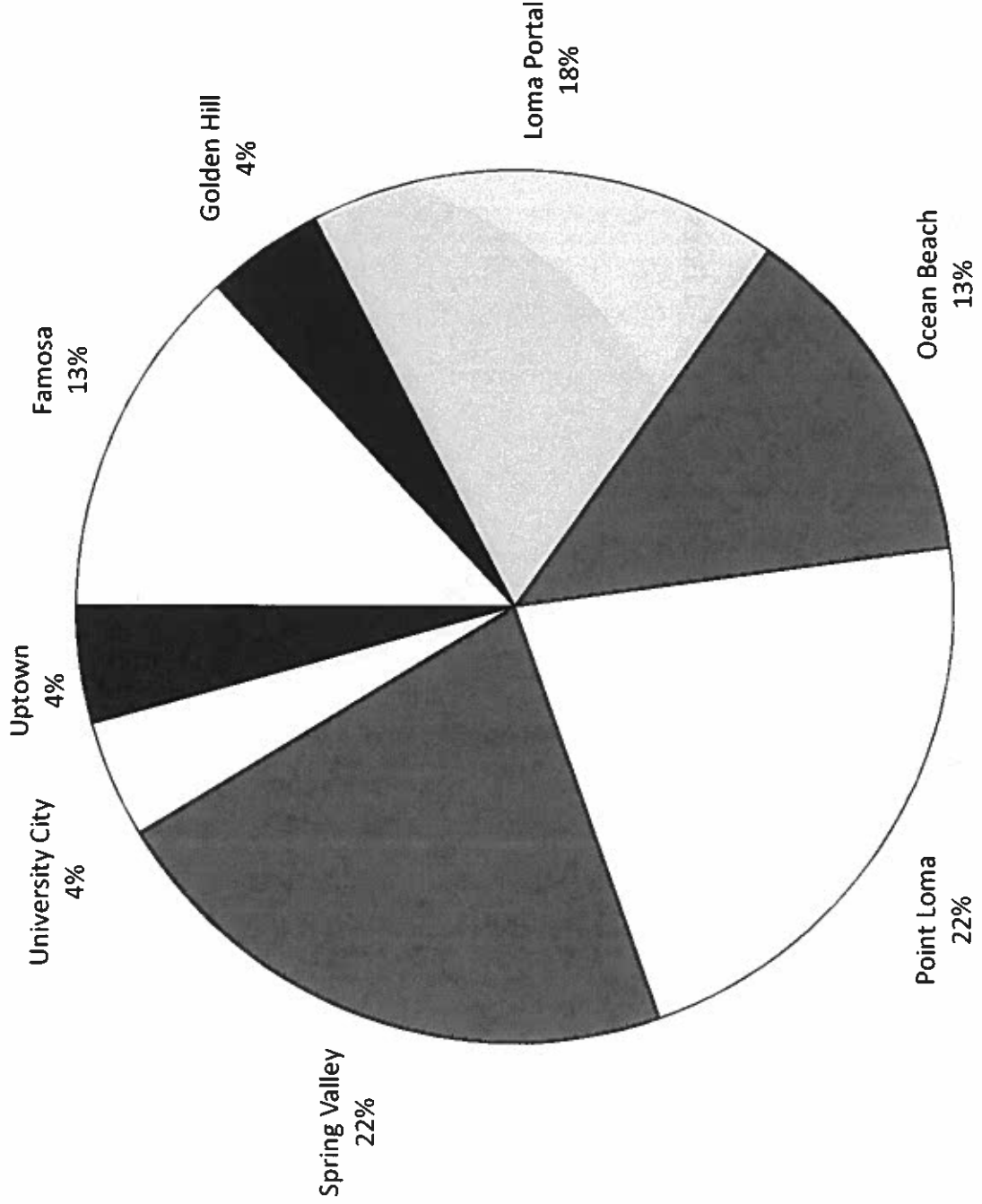
Aircraft Noise Complaint Distribution by Neighborhood



SAN DIEGO
INTERNATIONAL
AIRPORT

November 2012

TOTAL CALLS: 23



San Diego County Regional Airport Authority

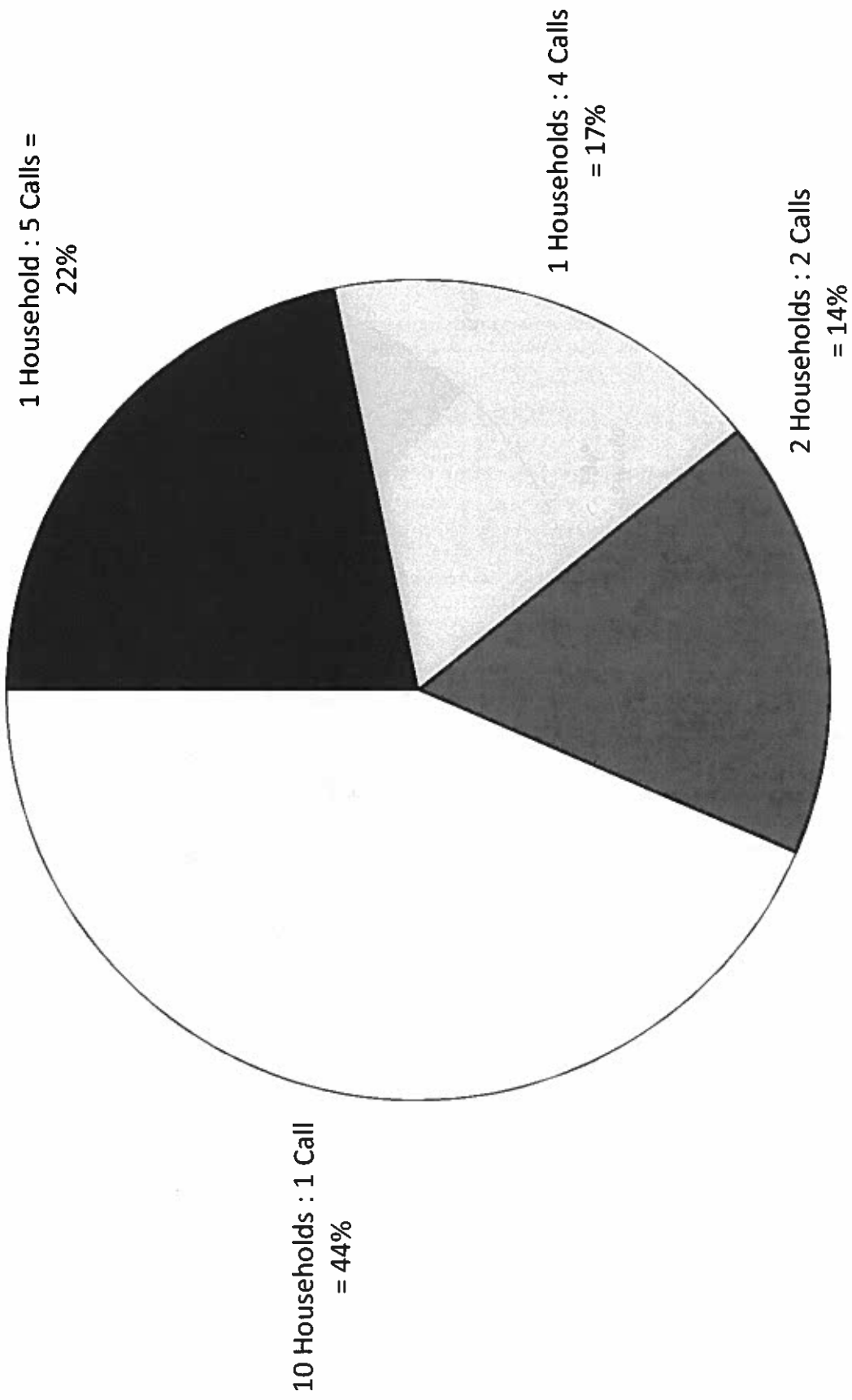
Aircraft Noise Complaint Distribution by Household



SAN DIEGO
INTERNATIONAL
AIRPORT

November 2012

TOTAL CALLS: 23



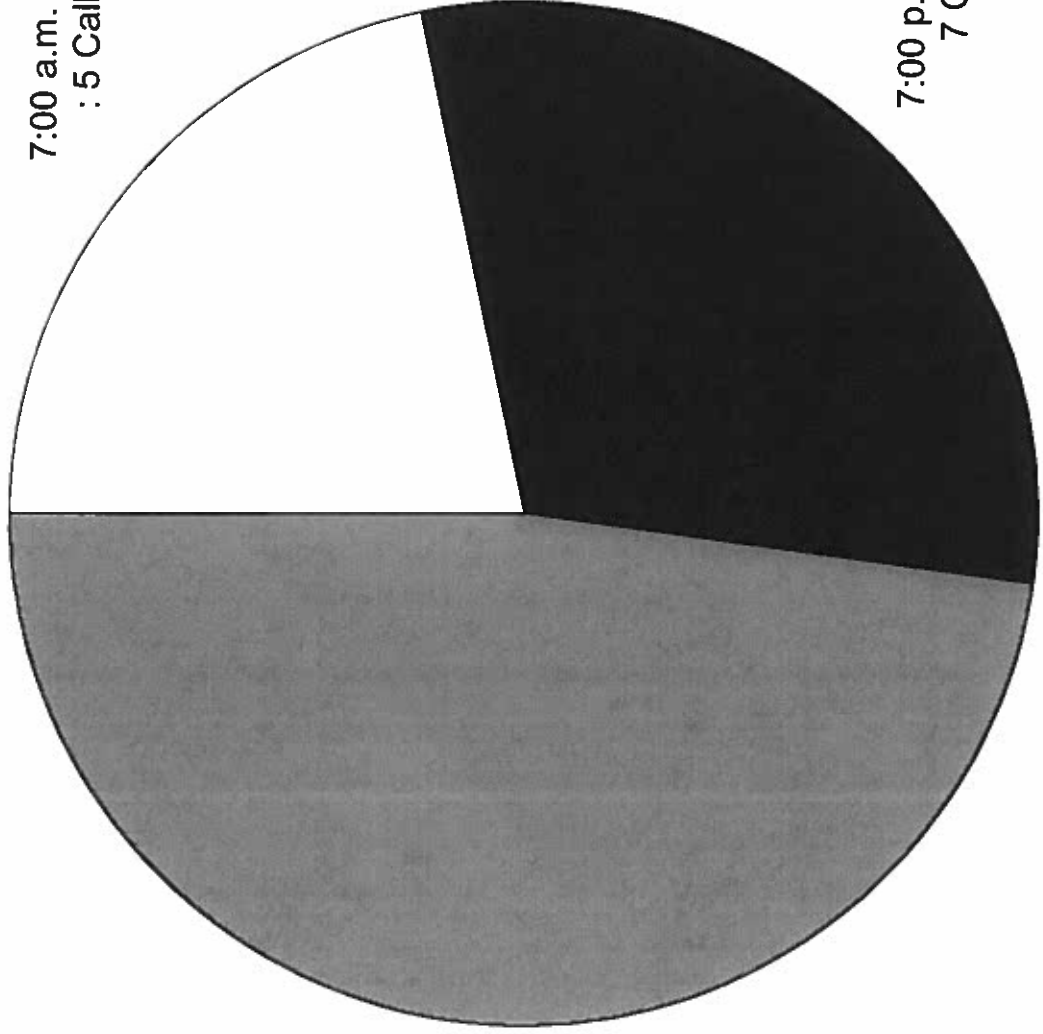
Aircraft Noise Complaint Distribution by Time of Day



SAN DIEGO
INTERNATIONAL
AIRPORT

November 2012

TOTAL CALLS: 23



10:00 p.m. - 6:59 a.m.
: 11 Calls = 48%

7:00 a.m. - 6:59 p.m.
: 5 Calls = 22%

7:00 p.m. - 9:59 p.m. :
7 Calls = 30%

Aircraft Noise Complaint Distribution by Aircraft Type



SAN DIEGO
INTERNATIONAL
AIRPORT

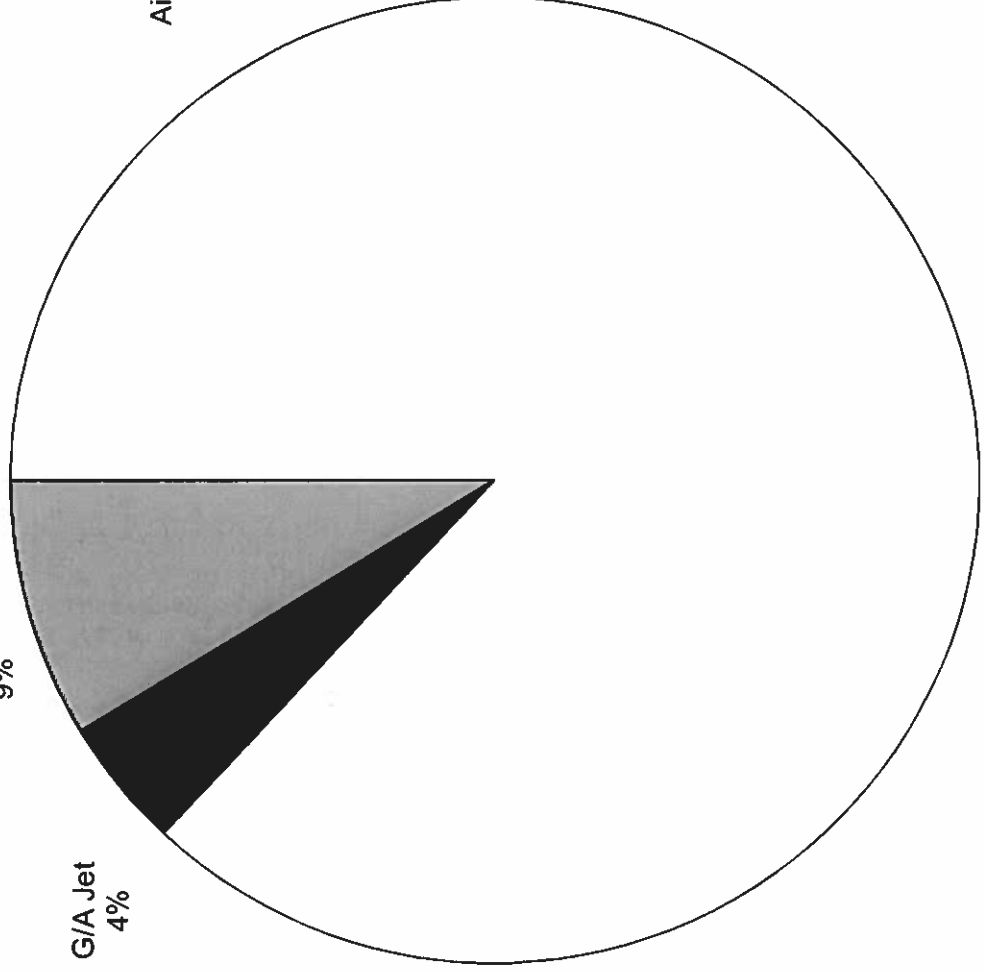
November 2012

TOTAL CALLS: 23

Not Applicable / All
Aircraft
9%

G/A Jet
4%

Airline Jet
87%



Airline Prop./Turboprop
0%

G/A Propeller
0%

Military
0%

Helicopter
0%

Aircraft Noise Complaint Distribution by Cause



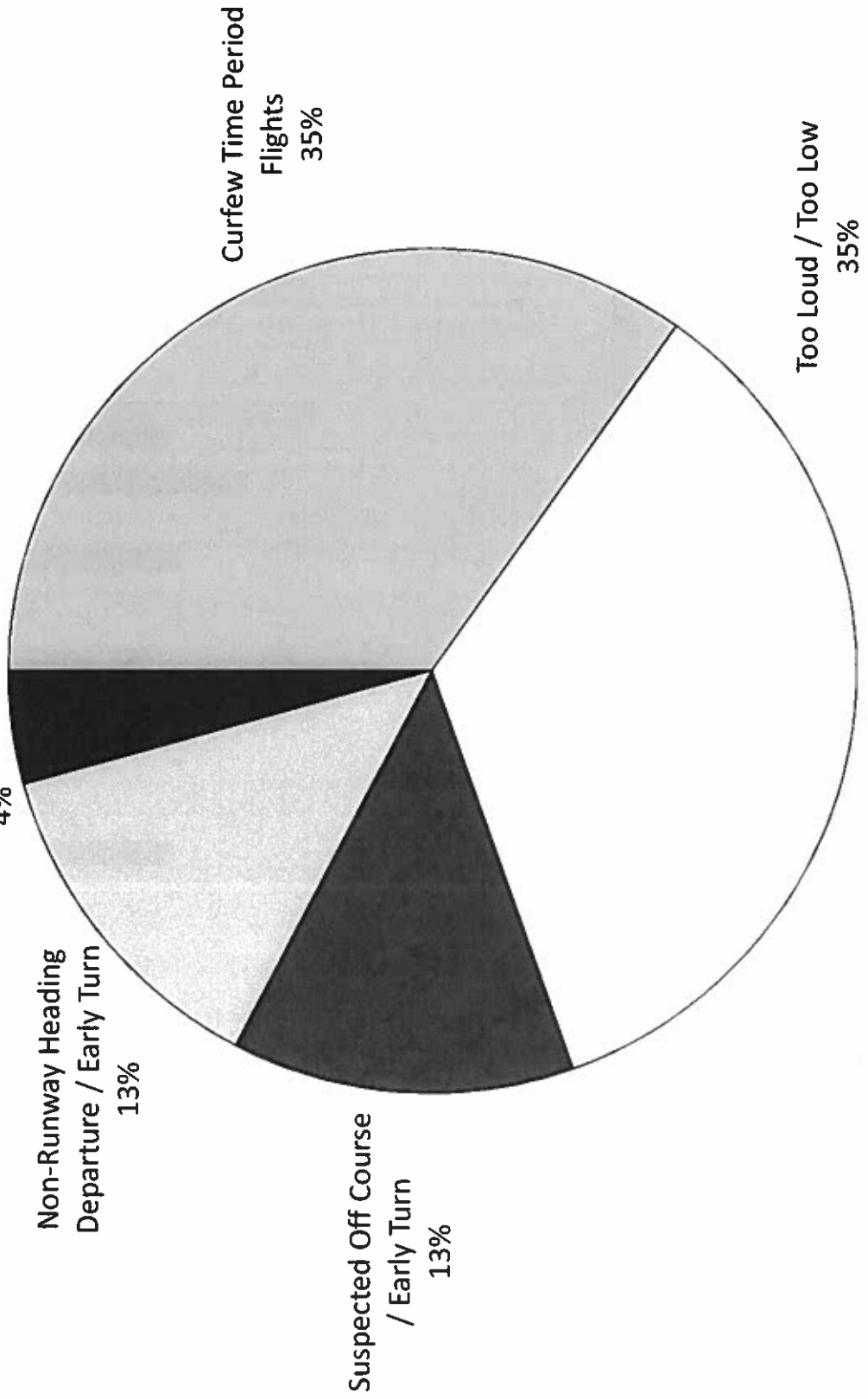
SAN DIEGO
INTERNATIONAL
AIRPORT

November 2012

TOTAL CALLS: 23

Unknown / Other

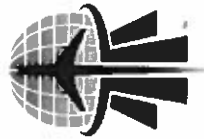
4%



**Aircraft Noise Complaint Distribution By Neighborhood
San Diego International Airport
Summary of Aircraft Noise Complaints - 2012**

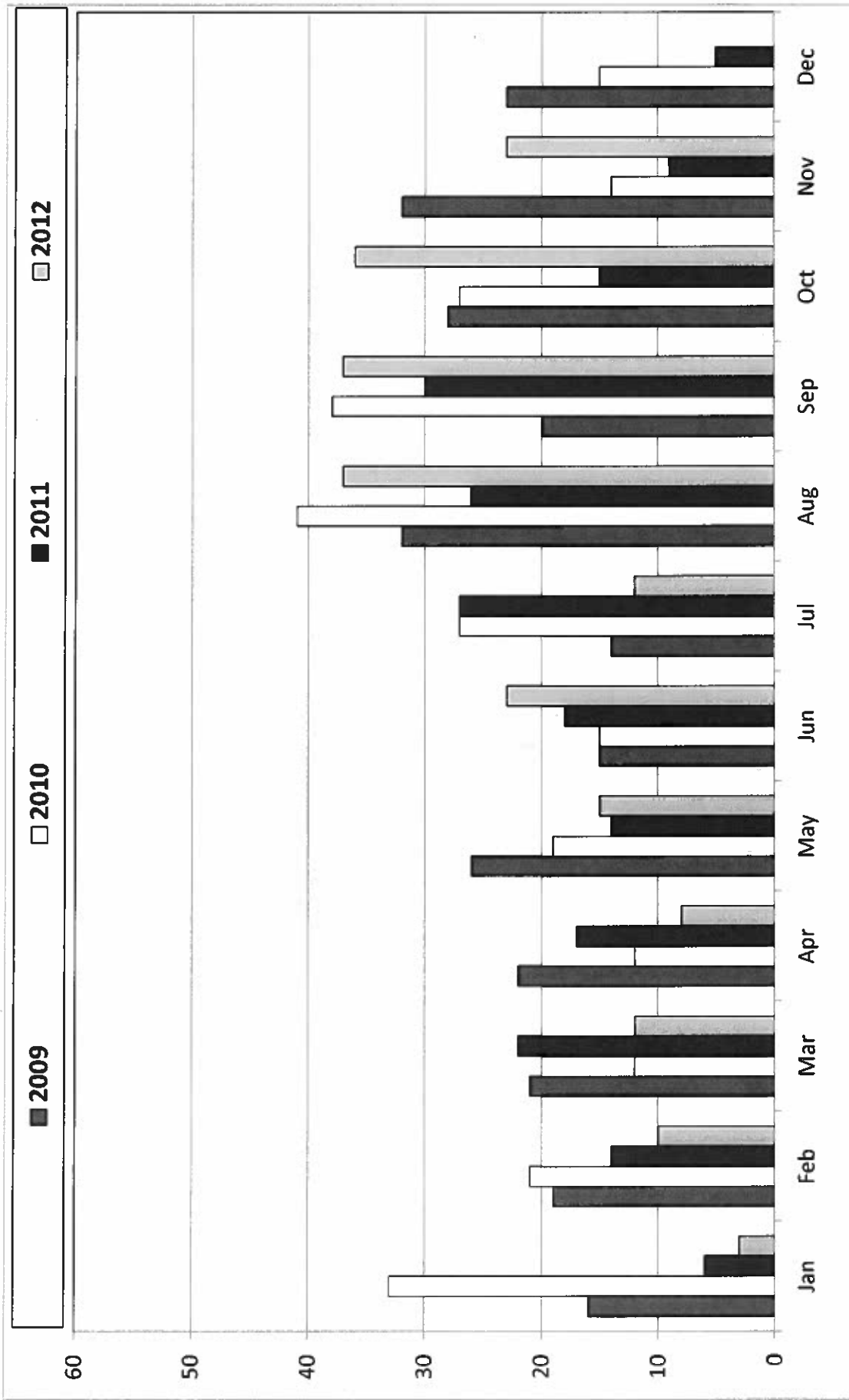
NEIGHBORHOOD	JAN	FEB	MAR	APR	MAY	JUN	JUL	AUG	SEP	OCT	NOV	DEC	TOTAL
Bay Park													0
Bonita													0
Chollas Creek								2					2
Chula Vista							1						1
Clairemont													0
College Area									1				1
Coronado													0
County of S.D.													0
Del Cerro													0
Downtown S.D.													0
El Cajon													0
Encanto/Lomita													0
Famosa				1		1		3	2	1	3		11
Golden Hill		2	1		1	2	2	1	1	2	1		13
Hillcrest								1					1
La Jolla							1			1			2
Lakeside													0
La Mesa													0
Lemon Grove													0
Liberty Station										2			2
Loma Portal	3	3	1	1	1	10	1	4	7	12	4		47
Middletown				1			1		1				3
Midway								1					1
Mission Beach								3	1				4
Mission Hills													0
Mount Hope									1				1
Mountain View													0
Normal Heights													0
North Park													0
Ocean Beach		1	3	1	4	6	1	5	8	6	3		38
Pacific Beach			1				1			1			3
Paradise Hills													0
Point Loma		4	5	3	9	4	4	13	15	7	5		69
Rolando													0
South Park			1	1									2
Spring Valley										1	5		6
Talmadge													0
University City											1		1
University Heights								4					4
Uptown										3	1		4
TOTAL	3	10	12	8	15	23	12	37	37	36	23	0	216

Monthly Aircraft Noise Complaints



SAN DIEGO
INTERNATIONAL
AIRPORT

2009 – November 2012

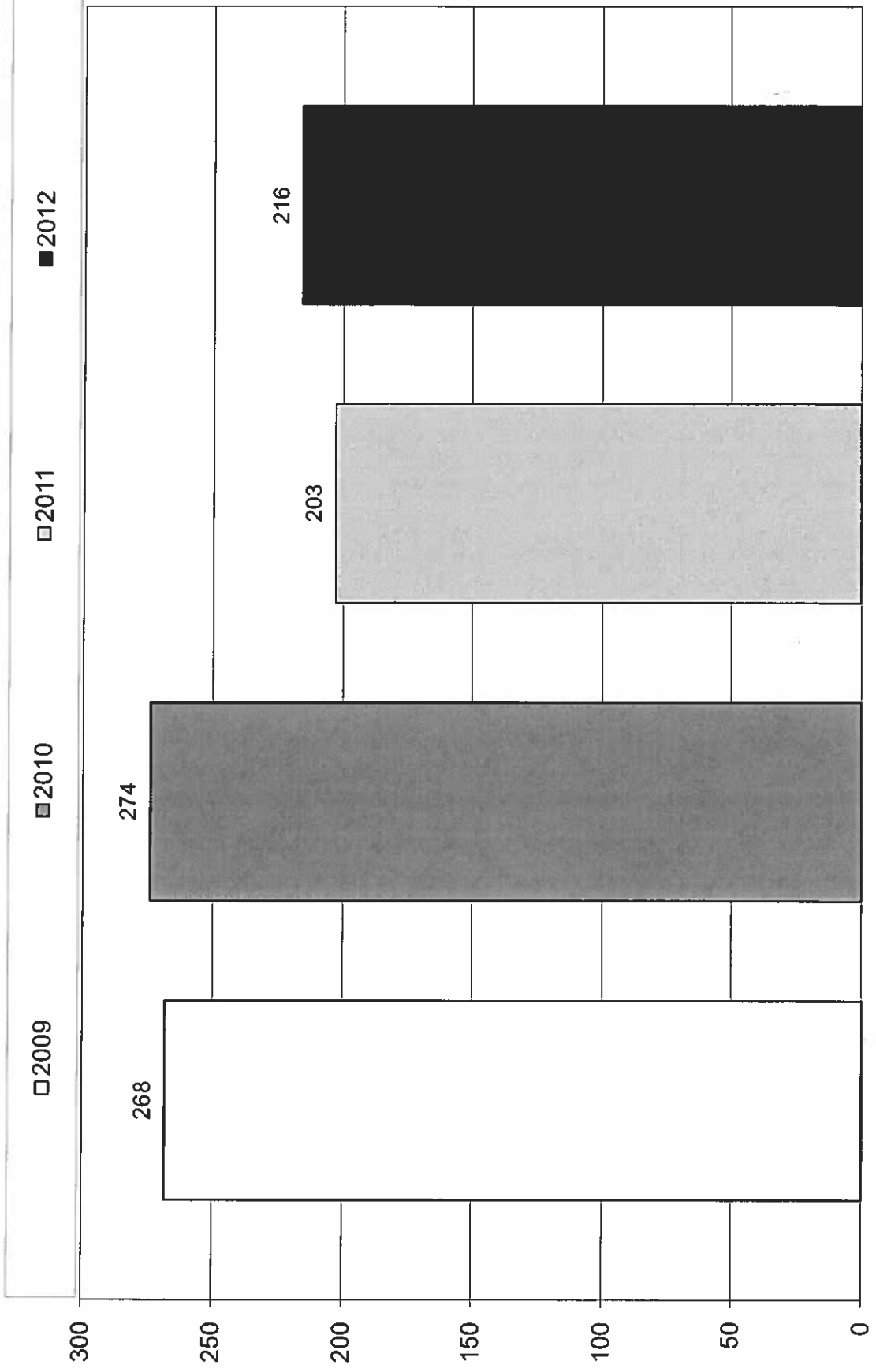


Annual Aircraft Noise Complaints



SAN DIEGO
INTERNATIONAL
AIRPORT

2009 – 2012 (November)





Airport Noise Mitigation Aircraft Noise Complaint Log December 2012

Event Date & Time Neighborhood City, State Zip Code	Comments	Resolution Comments
12/06/2012 @ 0539L Famosa San Diego , CA 92107	I'm calling about the last two days, between about 4:30 and 5:30 in the morning there have been two very heavy aircraft flying. I'd like to make a complaint, I'd like to get a return phone call, and I'd really like these airplanes to stop it, thank you.	Caller was informed of the Airport Use Regulations, Time of Day Restrictions, and that a Curfew Violation occurred. Explained the violation review procedures.
12/06/2012 @ 0539L Loma Portal San Diego , CA 92106	Good morning, I'd like to register a noise complaint, I was woken up by a jetliner departing out of San Diego International Airport, to the west, at 5:39 a.m. on December 6th. Since this was a departure during curfew hours, could you please give me a call. Also, I never got a call from the departure during curfew hours on November 13th, that was a 12:17 a.m. departure. Thank you, bye.	Caller was informed of the Airport Use Regulations, Time of Day Restrictions, and that a Curfew Violation occurred. Explained the violation review procedures.
12/06/2012 @ 0539L Loma Portal San Diego , CA 92106	I was awakened this morning at about 5:40 by a jetliner departing Lindbergh Field and I just want to register that complaint for you all to take notice of it, thank you.	Caller was informed of the Airport Use Regulations, Time of Day Restrictions, and that a Curfew Violation occurred. Explained the violation review procedures.
12/07/2012 @ 0457L Famosa San Diego , CA 92107	It's December 7th, 4:57 a.m., the planes are landing, it's clear outside, they're flying so low, my windows are vibrating on my house. They're affecting, not only the noise level, but my sleep structure and the integrity of my home. They're also polluting as they dump their fuel all over my home. I want to know, it's a clear night, a clear morning, it's not night anymore, and it's too early to be woken up when they fly in. They push the curfew at night. It disturbed my rest, they're loud, I want to know what happened, why the clear morning they're flying in. They shouldn't be flying in and they're too loud.	Caller was informed that the operation was an arrival on Runway 09. Arrivals are permitted 24-hours a day.
12/07/2012 @ 0550L Famosa San Diego , CA 92107	Hi, this is the third day in a row, my second phone call, it's about 5:50 this morning, another airplane drove over. It's quite loud, it's quite disrupting. What are you guys going to do about it?	Caller was informed that the operations were arrivals on Runway 09. Arrivals are permitted 24-hours a day.



12/08/2012 @ 0455L
Ocean Beach
San Diego , CA 92107

Good morning, today is December 8th, at 4:55 a.m., just had a plane come over, land, it's awful early, and I know they're not supposed to land till 6:30 a.m. So, I'm calling you to leave a message. Today is December 8th, the plane just landed at 4:55 a.m. I don't need a call back, I just wanted you to know, have a good day, thanks.

Caller was informed that the operation was an arrival on Runway 09. Arrivals are permitted 24-hours a day.

12/09/2012 @ 0331L
Famosa
San Diego , CA 92107

This is a noise complaint with reference to a flight taking off from Lindbergh at about 3:31 a.m., and after 11:30, means after 11:30. Whomever this is, please fine them, and then you can apportion it to the rest of the neighborhood that has to endure these kind of noises in the middle of the night.

Caller was informed that the operation was a Life-Flight departure that is exempt from the Curfew.

12/11/2012 @ 1343L
Golden Hill
San Diego , CA 92102

Hello, I live on the north side of the street in the 2500 block of B Street, and I have three questions regarding decibel levels where I live. The first is, how can I find out what the decibel levels are that are produced by the jets that fly overhead where I live? I looked at the maps but I didn't see a legend on there addressing that. My second question is this, I see planes fly along the alley that separates A & B Streets, yet B Street is not considered loud enough for noise reduction assistance. How can the decibel levels on one side of the alley be significantly lower than the other side when an aircraft is flying over down the alley? Also, I happened to suffer from tinnitus, which has increased in the two years since I've lived here at this location. I had always assumed that the aircraft flight path would not be allowed to be so loud as to cause hearing loss without some type of preventative measure taken. I just read your website last night and it appears that you have a variance that does not restrict you to safe levels. Is my understanding of that correct? Thank you.

Caller was informed of Air Traffic Control procedures and that the aircraft are following all prescribed arrival procedures. Also referred the caller to the Quieter Home Program.

12/11/2012 @ 1350L
Point Loma
San Diego , CA 92107

Just an FYI, we had a flyover at about 1:50 p.m., any particular reason?

Caller lives one mile south of the extended runway centerline. The aircraft flew the prescribed runway heading departure.

12/14/2012 @ 2016L
Spring Valley
Spring Valley, CA 91977

The flight that flew over at about 8:16 p.m. created a loud noise at my home.

Caller did not request a call back. The aircraft, a Stage 3 Boeing 767-300, followed all prescribed arrival procedures.



12/14/2012 @ 2116L
Spring Valley
Spring Valley, CA 91977

The flight that flew over at about 9:16 p.m. created a loud noise at my home.

Caller did not request a call back. The aircraft, a Stage 3 Boeing 737-800, followed all prescribed arrival procedures.

12/02/2012 @ 1037L
Point Loma
San Diego , CA 92106

On December 20th American Airlines was taking off at 10:37 a.m., came over my house, it was off the track, I want to report that. If you have any questions, give me a call back, thanks.

Caller did not request a call back. The operation was a non-runway heading maintaining separation from a missed approach on Runway 27.

12/27/2012 @ 2339L
Loma Portal
San Diego , CA 92106

Just reporting a curfew violation at 11:36 p.m. and again at 11:39 p.m. I guess you keep track of complaints, so I will be reporting these from time to time if they wake me up. The flight tracker website Radar appears to be down tonight, otherwise I'd get the specifics of the flights, thanks.

Caller was informed that the operations were arrivals on Runway 27. Arrivals are permitted 24-hours a day.

12/27/2012 @ 2352L
Loma Portal
San Diego , CA 92106

Again, another violation at 11:52 p.m. It's very unusual to have so many in one evening.

Caller was informed of the Airport Use Regulations, Time of Day Restrictions, and that a Curfew Violation occurred. Explained the violation review procedures.

12/30/2012 @ 1147L
Ocean Beach
San Diego , CA 92107

On December 30th at about 11:47 a.m. a Delta plane departed. I'm really curious about what was going on with this aircraft. I've never seen a turn like this.

Caller was informed of Air Traffic Control procedures and that the operation was an "Early Turn" departure to avoid flying through severe weather off the coast.

12/31/2012 @ 1400L
Golden Hill
San Diego , CA 92104

Yes, it's December 31st at 2:00 p.m. in the afternoon and again I'm complaining about an airline that is not staying in the flight pattern, the landing pattern. I live on the east side of Balboa Park and the plane went directly over my house and it's not supposed to, and this is probably my 3rd of 4th call on it, and it's the same airline. So, could somebody please call and let me know why this is being done, thank you.

Caller was informed of Air Traffic Control procedures and that the operation followed all prescribed arrival procedures.



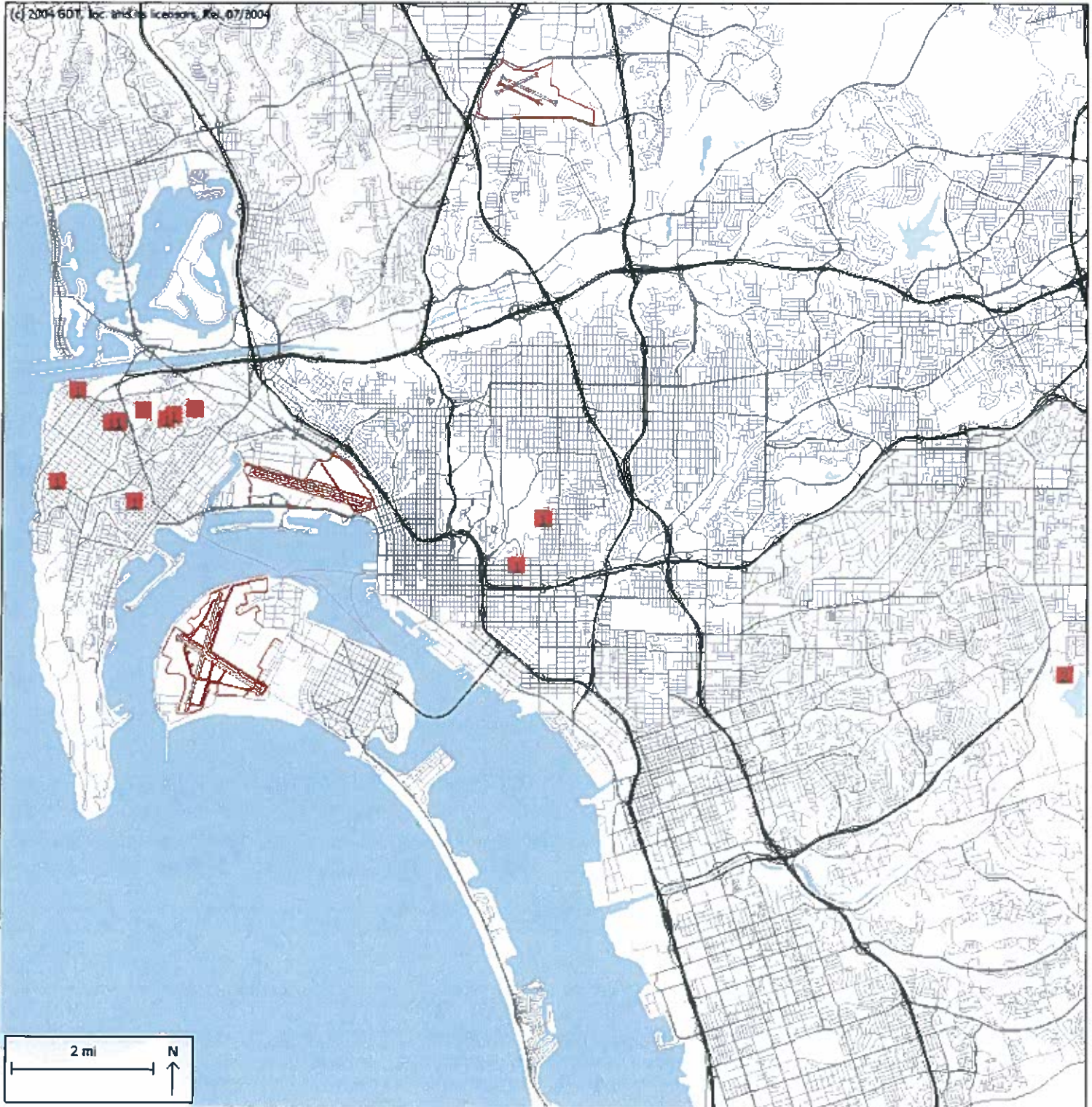


December 2012

Aircraft Noise Complaint Caller's Location in relation to San Diego International Airport (SDIA)
13 Households; 16 Complaints



SAN DIEGO
INTERNATIONAL
AIRPORT



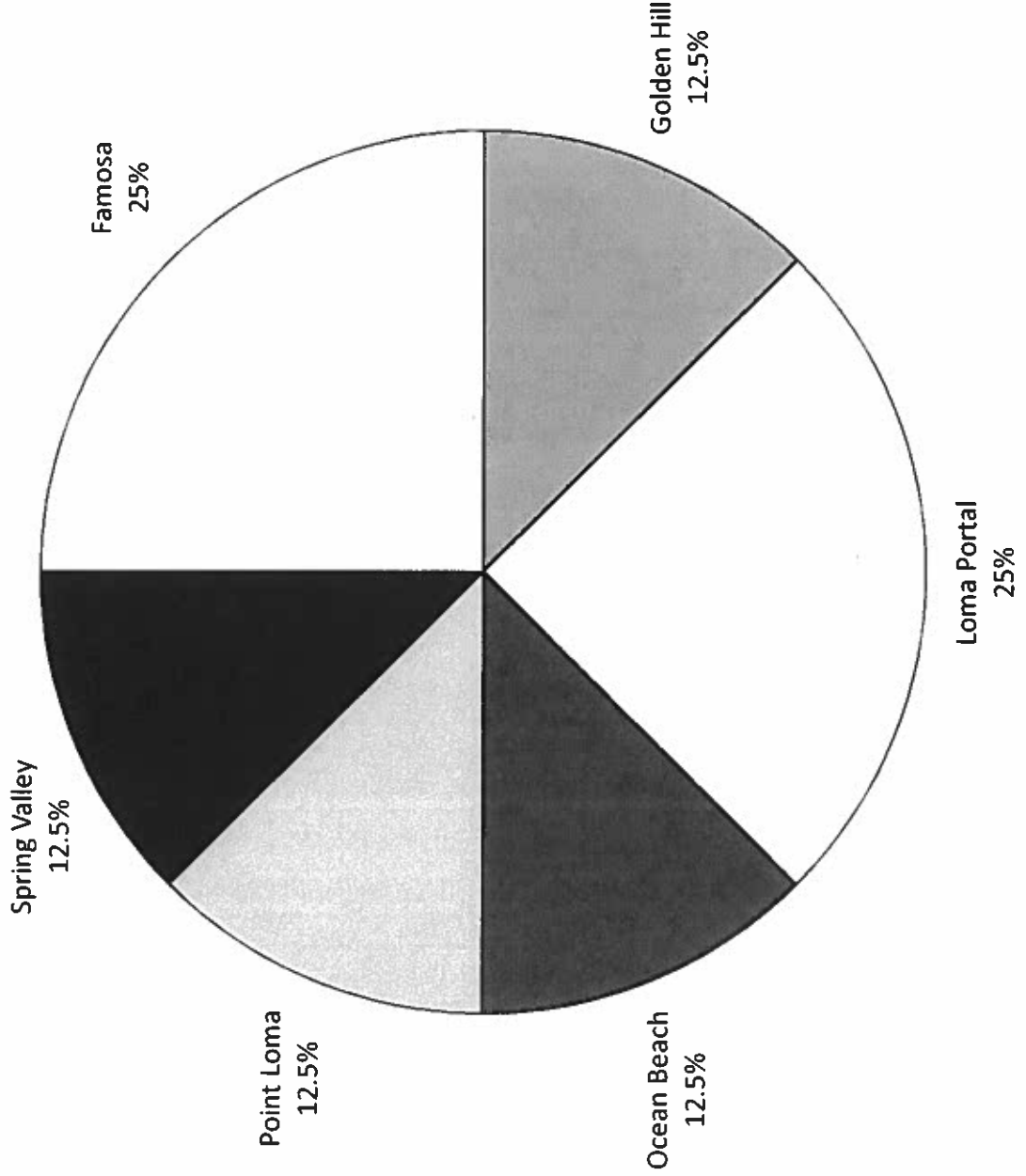
Aircraft Noise Complaint Distribution by Neighborhood



SAN DIEGO
INTERNATIONAL
AIRPORT

December 2012

TOTAL CALLS: 16



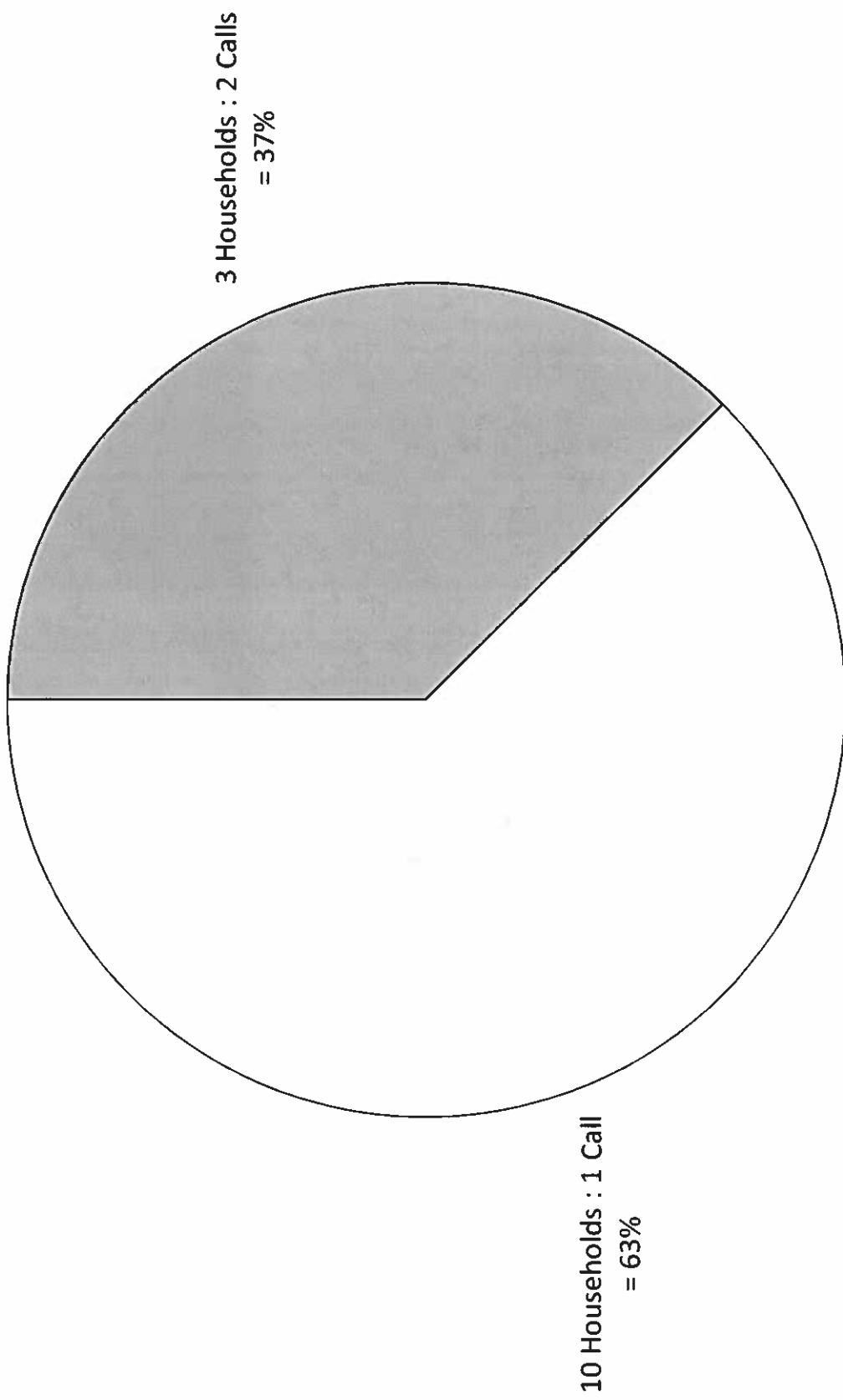
Aircraft Noise Complaint Distribution by Household



SAN DIEGO
INTERNATIONAL
AIRPORT

December 2012

TOTAL CALLS: 16



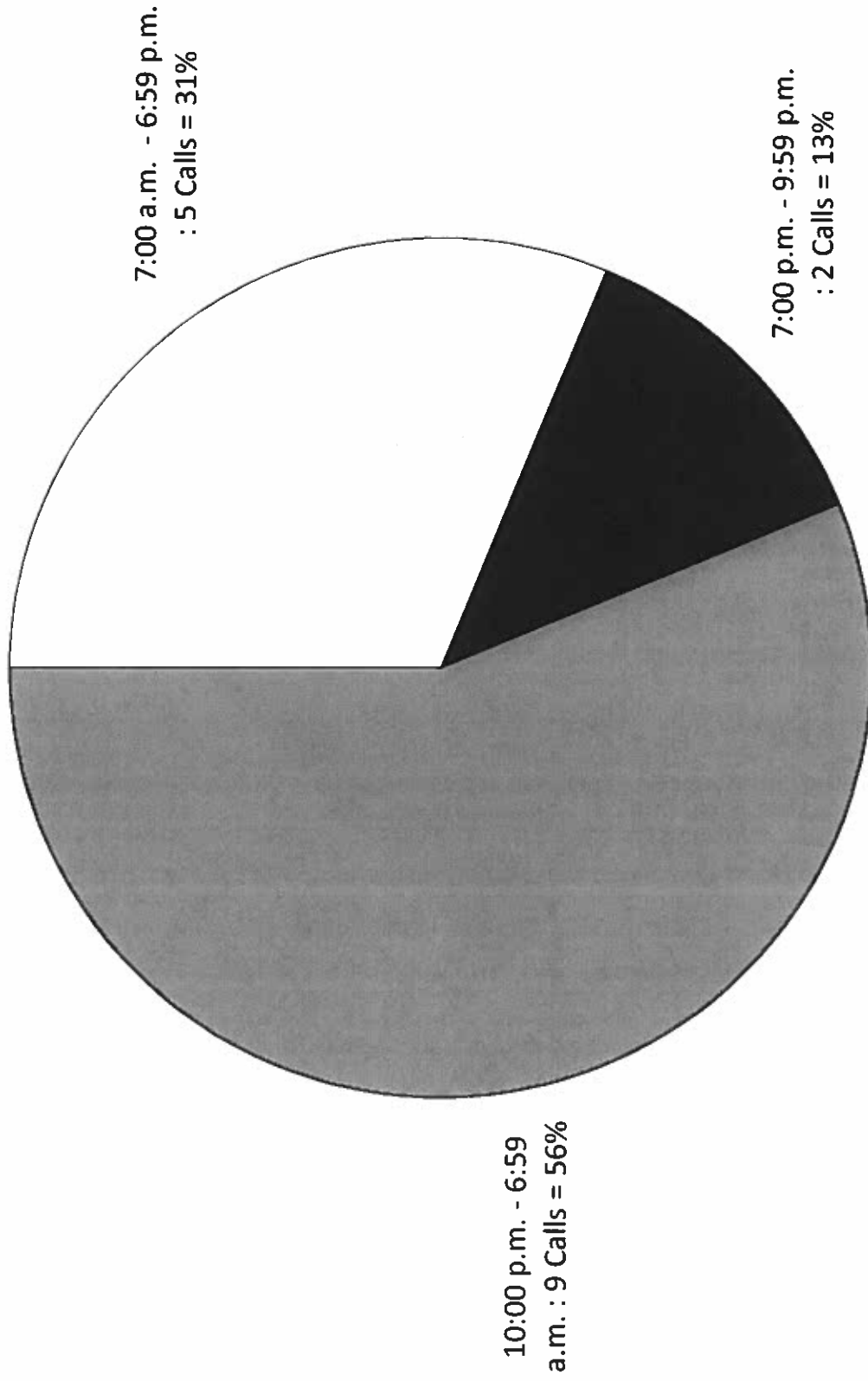
Aircraft Noise Complaint Distribution by Time of Day



SAN DIEGO
INTERNATIONAL
AIRPORT

December 2012

TOTAL CALLS: 16



Aircraft Noise Complaint Distribution by Aircraft Type

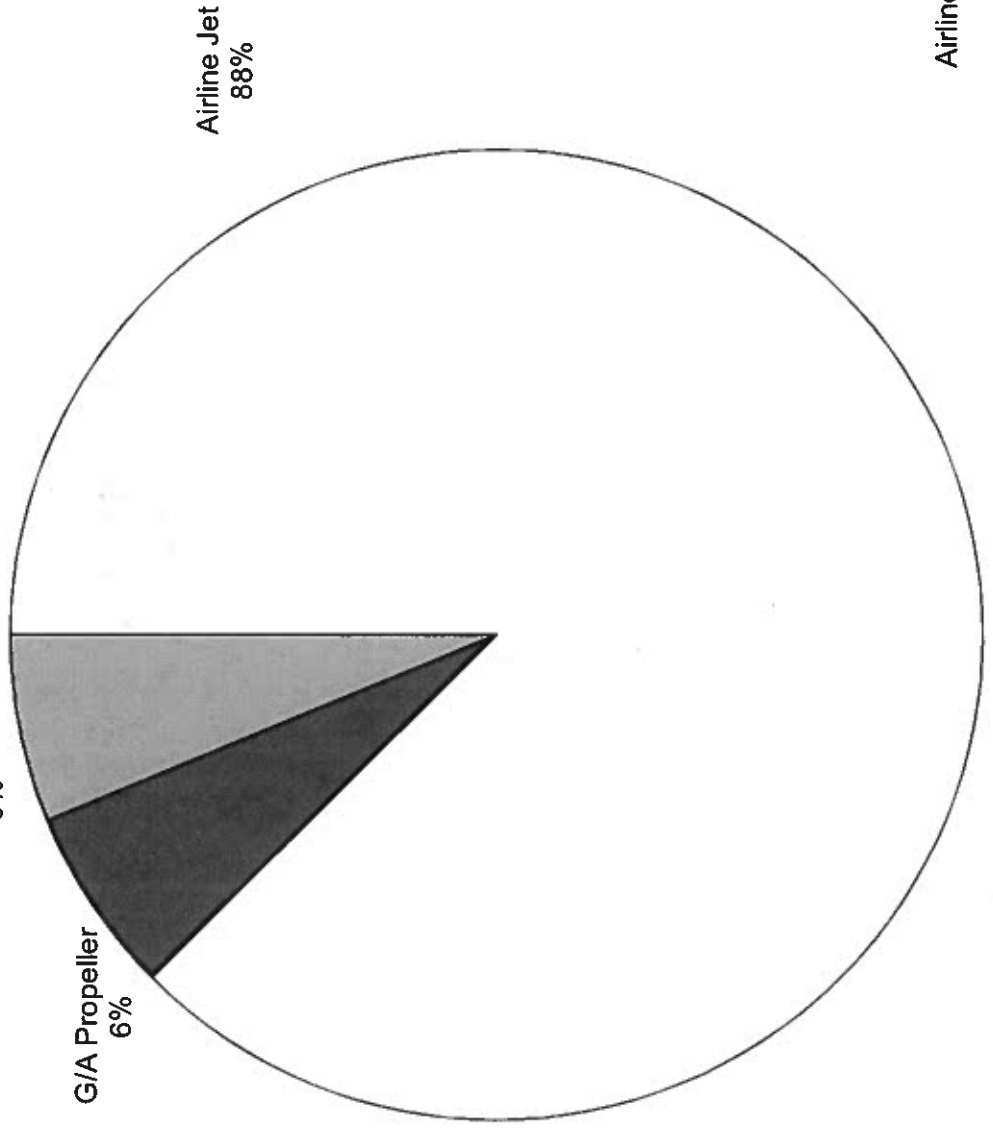


SAN DIEGO
INTERNATIONAL
AIRPORT

December 2012

TOTAL CALLS: 16

Not Applicable / All
Aircraft
6%



Military
0%

Helicopter
0%

G/A Jet
0%

Airline Prop./Turboprop
0%

Aircraft Noise Complaint Distribution by Cause



SAN DIEGO
INTERNATIONAL
AIRPORT

December 2012

TOTAL CALLS: 16

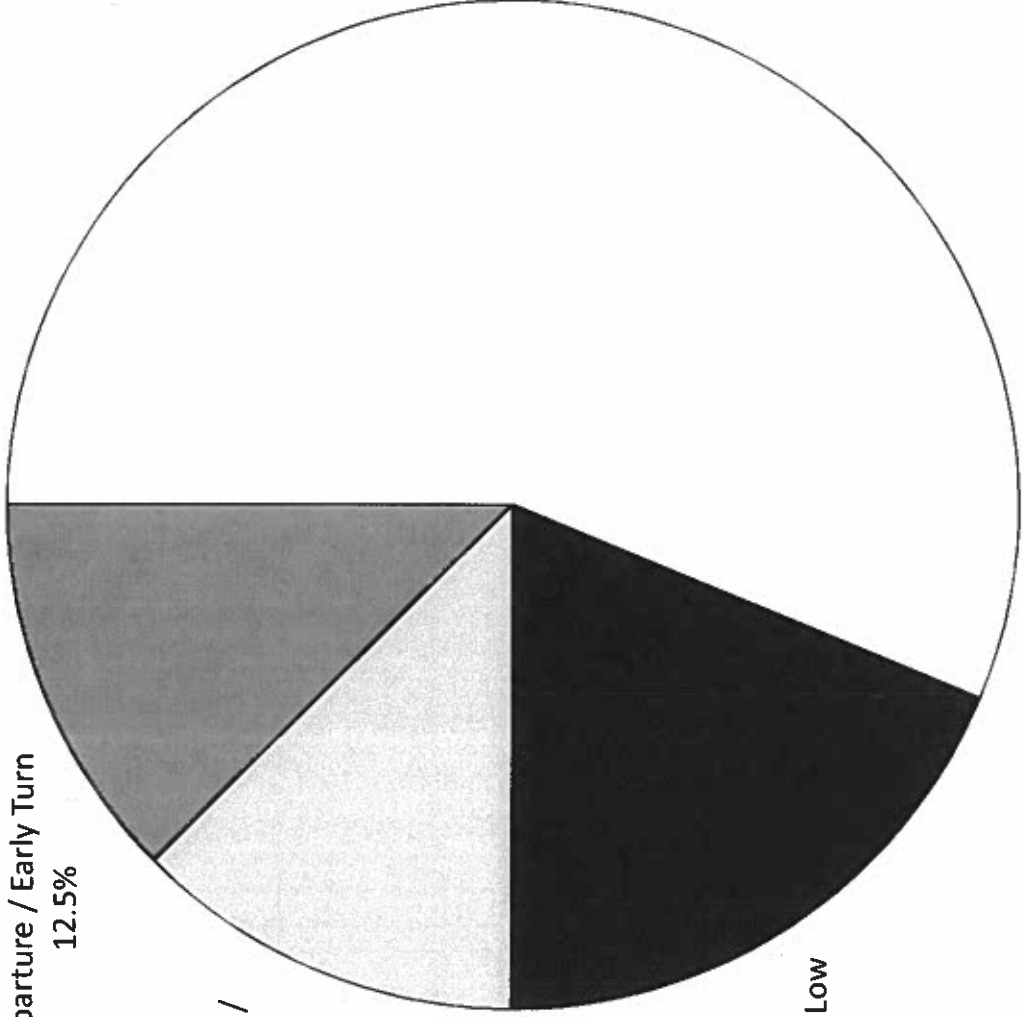
Non-Runway Heading
Departure / Early Turn
12.5%

Suspected Off Course /
Early Turn
12.5%

Curfew Time Period
Flights
56%

Too Loud / Too Low
19%

Unknown / Other
0%



**Aircraft Noise Complaint Distribution By Neighborhood
San Diego International Airport
Summary of Aircraft Noise Complaints - 2012**

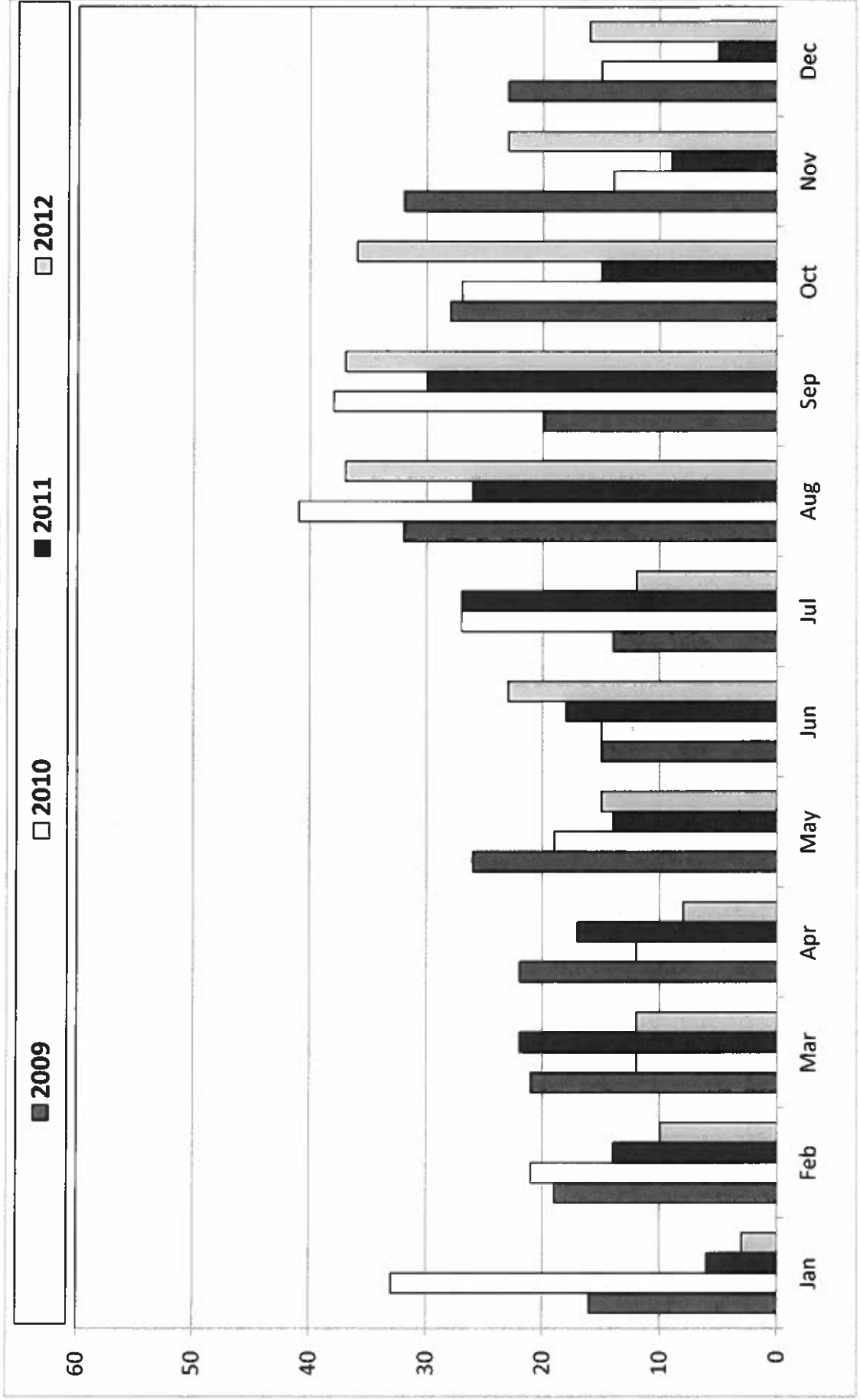
NEIGHBORHOOD	JAN	FEB	MAR	APR	MAY	JUN	JUL	AUG	SEP	OCT	NOV	DEC	TOTAL
Bay Park													0
Bonita													0
Chollas Creek								2					2
Chula Vista							1						1
Clairemont													0
College Area									1				1
Coronado													0
County of S.D.													0
Del Cerro													0
Downtown S.D.													0
El Cajon													0
Encanto/Lomita													0
Famosa				1		1		3	2	1	3	4	15
Golden Hill		2	1		1	2	2	1	1	2	1	2	15
Hillcrest								1					1
La Jolla							1			1			2
Lakeside													0
La Mesa													0
Lemon Grove													0
Liberty Station										2			2
Loma Portal	3	3	1	1	1	10	1	4	7	12	4	4	51
Middletown				1			1		1				3
Midway								1					1
Mission Beach								3	1				4
Mission Hills													0
Mount Hope									1				1
Mountain View													0
Normal Heights													0
North Park													0
Ocean Beach		1	3	1	4	6	1	5	8	6	3	2	40
Pacific Beach			1				1			1			3
Paradise Hills													0
Point Loma		4	5	3	9	4	4	13	15	7	5	2	71
Rolando													0
South Park			1	1									2
Spring Valley										1	5	2	8
Talmadge													0
University City											1		1
University Heights								4					4
Uptown										3	1		4
TOTAL	3	10	12	8	15	23	12	37	37	36	23	16	232

Monthly Aircraft Noise Complaints



SAN DIEGO
INTERNATIONAL
AIRPORT

2009 – December 2012



Annual Aircraft Noise Complaints



SAN DIEGO
INTERNATIONAL
AIRPORT

2009 – 2012 (December)

