

SAN DIEGO COUNTY
REGIONAL AIRPORT AUTHORITY

P.O. BOX 82776, SAN DIEGO, CA 92138-2776
619.400.2400 WWW.SAN.ORG

Date: October 29, 2010
To: Distribution
Subject: Aircraft Noise Complaint Report – August 2010

A copy of the noise complaints received by Airport Noise Mitigation at San Diego International Airport for the month of August 2010 is submitted for your information. This report is required as a condition of the Airport Noise Variance and is submitted to local and state agencies.

This report includes:

- Aircraft Noise Complaint Log
- Aircraft Noise Complaint Callers' Location Map
- Aircraft Noise Complaint Distribution by Neighborhood
- Aircraft Noise Complaint Distribution by Household
- Aircraft Noise Complaint Distribution by Time of Day
- Aircraft Noise Complaint Distribution by Aircraft Type
- Aircraft Noise Complaint Distribution by Cause

Comparative Charts:

- Year-to-Date Aircraft Noise Complaint Statistics by Neighborhood
- Monthly Aircraft Noise Complaints (2007 – August 2010)
- Annual Aircraft Noise Complaints (2007 – August 2010)

Threats against aircraft are taken seriously and will be reported to the appropriate federal law enforcement agency. Complaints containing profanity or insinuation of threat to Airport Authority or affiliated staff will not be included in this log.



Dan Frazee
Director, Airport Noise Mitigation

Enclosures

DF/rja



SAN DIEGO
INTERNATIONAL
AIRPORT

Aircraft Noise Complaint Report
October 29, 2010
Page Two

Distribution:

Patricia Delgado, Aeromexico
Greg Trinkaus, Airborne Express
James Mayer, Air Tran Airlines
Danny Flores, Alaska Airlines
Phil Delk, Allegiant Air
Lynn Silva, America West Airlines/US Airways
Tina Moman, American Airlines
Steve Terry, American Eagle
John Dickman, BAX Global
Jean Buggs, Continental Airlines
Jeff Rasor, Delta Air Lines
Bobbie Schlindler, Federal Express
Eric Srangsrivong, Frontier Airlines
Janet Nix, Hawaiian Airlines
Brian Towle, Jet Blue Airways
Roy Gourley, SkyWest Airlines
Cheryl Black, Southwest Airlines
Darwin Schussler, Sun Country
Al Turner, United Airlines
Randy Churchward, United Parcel Service
Tim Kennell, UPS-Supply Change Solution
Sean Mahoney, United States Coast Guard
Niall Mulcahy, Virgin America
Linda Adams, SOCAL TRACON
Jeff Tittle, Air Traffic Manager, Lindbergh Tower
Betsy Eskridge, Division of Aeronautics (CalTrans)
Airport Noise Advisory Committee



Airport Noise Mitigation Aircraft Noise Complaint Log August 2010

| Event Date & Time Neighborhood City, State Zip Code | Comments | Resolution Comments |
|--|--|--|
| 8/02/2010 @ 1930L Loma Portal San Diego, CA 92106 | Hi, you know me, I've been to a couple of meetings, I just wanted to let you know that around 7:11 p.m. there was a plane going down Tennyson Street, and around 7:30 p.m. there was another one going down Tennyson Street at Willow Street, and I just want to make sure that those are recorded, and that they are on your Radar as that. I would like to have another meeting to see, update on your Radar, the following the aircraft paths. Anyway, I just wanted to make sure that you know there's been a lot of planes south of Zola Street today, and a few, more than two, probably 3 or 4, that have gone down Tennyson at Willow, or crossing Willow and a little bit further west. So, I'm just wanting to be recorded, so I wanted to verify that at a later date, and I wanted you to check it up and see what headings you have on your records, because those were way south, and we need to get this figured out, thank you, bye. | Caller was informed of Air Traffic Control procedures and that the aircraft flew the prescribed runway heading departure. |
| 8/02/2010 @ 2335L Loma Portal San Diego, CA 92106 | Hi, this is the second night in a row that a plane's taken off past curfew, last night it was past midnight, tonight it was only like five minutes past, but this absolutely ridiculous. It's summertime, windows are open. The fine isn't enough, just don't let them take off. The fine does not help anybody get any sleep back, it's ridiculous! Who gets the money? Anyway, it's absolutely ridiculous. I think they should stop, not let them take off, and take it a little more seriously, cause it's absolutely got to stop. | Caller was informed of the Airport Use Regulations, Time of Day Restrictions, and that a Curfew Violation occurred. Explained the violation review procedures. |



8/03/2010 @ 2250L
La Jolla
San Diego, CA 92037

I am complaining because it's 10:50 p.m. and it's Tuesday, August 3rd, and there is some type of very loud aircraft, which is not a search, police searcher, anything like that. It's just a very large aircraft. They're circling my house, over and over for the past ten minutes. I want someone to call me back. If this keeps happening I'm suing the County. This is ridiculous! It woke me up from a dead sleep. Please call me; I will be available tomorrow, thank you.

Caller was informed the operation was the San Diego Police Department helicopter. Referred the caller to the SDPD.

8/04/2010 @ 0730L
Point Loma
San Diego, CA 92106

I have been experiencing noisy low-level flyovers at my house in Point Loma. This morning there were two, one at 6:58 and the other at 7:30 a.m. Yesterday morning there were also two, one at 7:02 and the other 7:15 a.m. My house is on a vector of about 49 degrees south of the end of Runway 27, or approximately a 221 degree heading from the end of that runway. My understanding is that construction should be complete at the airport, therefore, aircraft should normally use a 275 or 290 degree vector, with rare exception. However, 250 degrees should be the most southerly vector to be used when necessary during construction.

Caller was informed of Air Traffic Control procedures and that the non-runway heading departures, by Cessna C208 turboprops, followed all prescribed departure procedures.

8/05/2010 @ 0447L
Point Loma
San Diego, CA 92107

There was a plane that took off from Lindbergh Field in violation of the curfew at about 4:47 this morning, August 5th, Thursday. I happened to be up, I heard the plane go over and it's in violation, they're not supposed to be flying at this hour, and it was a big aircraft. So, I would like somebody to call me back and let me know what's going on, why that plane was taking off in violation of the curfew so that we can properly address the issue. Thank you for returning my call, goodbye.

Caller was informed that the aircraft was a helicopter from the U.S. Customs and Border Enforcement out of NAS North Island. Referred the caller to the U.S. Customs and Border Enforcement.

8/05/2010 @ 2318L
Pacific Beach
San Diego, CA 92109

Hi guys, its August 5th at 11:18 at night, and they sent another plane climbing low over Pacific Beach, and it seems as low as the last one, which would put it at maybe 3,200 feet, so that's low. You know, have them go over at 6 or 7 thousand feet, 3,200 is low. Private plane are supposed to come over here at 1,000 feet above residential. So, very loud, very loud, do something about it. Thank you, bye.

Caller did not request a call back. The aircraft was an "Early Turn" departure. The flight track will be sent to the FAA for evaluation.

8/09/2010 @ 1723L
Ocean Beach
San Diego, CA 92107

I've lived in Point Loma in the same house since 1972. There was a plane that went over at about 5:23 p.m. that was the furthest south and the lowest that I can remember. Could you please let me know what this plane was doing? Thanks.

Explained that the aircraft was an "Early Turn" departure. The flight track will be sent to the FAA for evaluation.



| | | |
|---|---|--|
| 8/09/2010 @ 1723L Point Loma San Diego, CA 92107 | It's Monday, August 9th, and it was about 5:23 p.m. and a plane was way south and way low. So, I would appreciate a call back, thank you. | Explained that the aircraft was an "Early Turn" departure. The flight track will be sent to the FAA for evaluation. |
| 8/09/2010 @ 1724L Point Loma San Diego, CA 92107 | It's 5:24 p.m. on August 9th, and I can't let this aircraft go by without a complaint. Call me back, tell me what was going on. | Explained that the aircraft was an "Early Turn" departure. The flight track will be sent to the FAA for evaluation. |
| 8/09/2010 @ 1724L Loma Portal San Diego, CA 92106 | Hello, I'm calling to complain about a flight that just flew over my house at about 5:24 p.m. It was loud enough to shake the windows and that's why I am complaining. Thank you. | Explained that the aircraft was an "Early Turn" departure. The flight track will be sent to the FAA for evaluation. |
| 8/09/2010 @ 1724L Point Loma San Diego, CA 92107 | At 5:24 p.m. on August 9th, a plane just went by, I swear to God, I thought it was going come through my second story window. It's getting obnoxious, when is this going to stop? | Caller did not request a call back. The aircraft was an "Early Turn" departure. The flight track will be sent to the FAA for evaluation. |
| 8/10/2010 @ 1130L Ocean Beach San Diego, CA 92107 | I bought recently here on Saratoga Avenue in Ocean Beach about four months ago, and I noticed that the noise levels for the last week seem to be louder than before. Did something change? Could someone call me back? Thanks. | Caller was informed of Air Traffic Control procedures and that no changes have been made to the flight paths. |
| 8/11/2010 @ 0009L Famosa San Diego, CA 92107 | And a big heavy plane just went overhead, it was 12:09 a.m. when it went overhead, and today is Wednesday, August 11th. So, I would like somebody to get back to me and let me know how much that plane will be fined. Thank you. | Caller was informed of the Airport Use Regulations, Time of Day Restrictions, and that a Curfew Violation occurred. Explained the violation review procedures. |
| 8/11/2010 @ 0700L Ocean Beach San Diego, CA 92107 | I'm calling because it seems like there's been a change of flight paths. It seems like there's up to 70 planes each morning and there's been a rerouting where they're over my house. | Caller was informed of Air Traffic Control procedures and that no changes have been made to the flight paths. |



8/12/2010 @ 0635L
Point Loma
San Diego, CA 92106

Hi, at about 6:35 a.m. this morning, boy I tell you, I was in the shower and I thought the whole place was gonna come down. A jet went over my house, I mean if it wasn't over my house, I'm crazy. I know there's overcast here, I'm used to it, I've been here for 30 years, but, this sounded unbelievable. I used to live in a different area here in La Play where the jets from the Naval Air Station flew over, which didn't bother me at all, there was something about it that I really didn't get upset about, ever. This one sounded like it was about 100 feet over my house, and off course. I wasn't outside to see it, but I probably couldn't anyway cause of the nature of the weather this morning. I was really upset, and I thought, good god, this is incredible. Today is Thursday, August 12th, and I'm just curious, I'd like to know what it was, and it was at about 6:35 a.m. this morning. I'd like to hear what it was, thank you.

Caller was informed that no SDIA aircraft flew over and that the operation was from NAS North Island. Referred the caller to NAS North Island.

8/12/2010 @ 1129L
Point Loma
San Diego, CA 92107

Good morning, thank you for all of your hard work and effort to expand our international airport. We understand that during this time we are making sacrifices. I have contacted the phone number listed for noise complaints, however, no one ever returned my call. I would like to bring to your attention that every Saturday and Sunday morning at about 6:35 a.m., and most mornings during the week, we are now awakened in our otherwise quiet neighborhood. We have been informed that the flight takeoff patterns were to be equally distributed throughout the neighborhoods. If so, then why is it a constant flow of loud jets beginning most mornings, and every Saturday and Sunday at 6:35 a.m.? In addition, this morning before 7:00 there was a jet that was certainly over the limit of allowed decibels; horrific and very disappointing. Please help, this has dramatically changed the face of our quiet enclave here in Sunset Cliffs. It is not delightful to be awakened abruptly "most" mornings. To make matters worse, we leave our homes earlier, since we are awake to go work out and are too overwhelmed by the intensity of jets passing overhead Liberty Station. When may we expect our neighborhood to return to its previous character? Thank you for your kind and immediate attention to this matter.

Caller was informed of Air Traffic Control procedures and that no changes have been made to the flight path.



8/13/2010 @ 0732L
Point Loma
San Diego, CA 92107

Good morning again, I wrote to you yesterday about the alleged disturbances caused by the daily, early morning takeoff pattern over Sunset Cliffs. Again this morning, beginning at 6:35 and every 10 to 13 seconds, a jet flew overhead. It was not until 7:13 that we had some peace. Please explain why every morning the planes are directed to take off over Sunset Cliffs. We were told takeoffs would be fanned throughout neighborhoods.

Caller was informed of Air Traffic Control procedures and that no changes have been made to the flight paths.

8/14/2010 @ 2317L
Pacific Beach
San Diego, CA 92109

Hi, as usual, I'm on the books, it's August 14th and they just sent a plane over at 11:17 p.m. when everything is quiet and peaceful, and then suddenly there's this loud roar. Jeez, you would think they would send it over earlier when there are more distractions so it's not so noticeable, or send it over the ocean. Good night.

Caller did not request a call back. The operation was an "Early Turn" departure. The flight track will be sent to the FAA for evaluation.

8/16/2010 @ 0640L
Point Loma
San Diego, CA 92107

Hi, I received your call back Friday to talk to me about the noise complaints. I guess you're not open during the time when they're flying over and creating all the noise, they're waking up all the residences. As you can tell by the time of the call, it's 6:40 in the morning and about six jets have already gone over, the second one was horribly loud. So, I'm returning your call, I would look forward to hearing from you and what can be done about this constant disturbance. I would like to know why, and if you could research this before you call me, why it is what it's one after the other every 10 seconds, one flies over. You have 10 seconds of silence and then there's another jet. So, why is it that they all fly over Sunset Cliffs. Thank you.

Caller was informed of Air Traffic Control procedures and that the aircraft flew the prescribed runway heading departure.

8/16/2010 @ 0842L
Loma Portal
San Diego, CA 92106

Hi there, I would like an email response on this one. At 8:42 a.m., on August 16th, I think a jet did not land and passed over our address. According to your online Flight Tracker it was an A320 at 8:42 a.m., and it came in for a landing and then diverted, and just wonder what that was all about. I thank you kindly.

Caller was informed that the operation was a non-runway heading missed approach on Runway 27.



8/16/2010 @ 1915L
Mission Hills
San Diego, CA 92103

Hi, it's 7:15 p.m. on Monday, August 16th, I'm calling regarding a sound that's been going on for an hour now. It sounds very much like an engine, an airplane engine idling. I called Airport Operation and they say "oh, well, I got 40 planes taking off", but that's not what I'm hearing. It's very annoying, it's droning on and on and on. I don't know if it's San Diego International or North Island, but it's very annoying. I would appreciate a call back, there's an answering machine here, and perhaps an explanation as to what this sound is. Thank you very much, good evening.

Caller was informed that the aircraft followed all prescribed engine run-up procedures.

8/16/2010 @ 2210L
Ocean Beach
San Diego, CA 92107

Hi, two matters, not so much a complaint. It's 10:15 p.m. on Monday night, I'm in Ocean Beach, and for about the last hour there have been what sounds like prop planes flying off the coast, a lot of prop planes, not just one plane. Yes, it sounds like a convoy of B-52s up there. So, I'm curious about that, what it is, and then also at about 7:30 or 8:00 this evening there was a loud, loud, I thought it was an earthquake, thumping, bumping, it wasn't a swaying like an earthquake, but I'm curious if you know what that is. If you could give me a call tomorrow and let me know on these things I'd appreciate it, thank you.

Caller was informed that the aircraft were Department of Homeland Security aircraft operating out of NAS North Island. Referred the caller to the D.H.S.

8/16/2010 @ 2217L
Ocean Beach
San Diego, CA 92107

For the last half hour, right now it's 10:17 p.m., there have been, sounds like B-52 bombers whirring over my home, and I wondered why there are bombers whirring over my home. Please call me and indicate the reason for this disturbance in the peace. I appreciate your time, and I look forward to hearing from you very soon. Thank you, bye.

Caller was informed that the aircraft were Department of Homeland Security aircraft operating out of NAS North Island. Referred the caller to the D.H.S.

8/16/2010 @ 2300L
Ocean Beach
San Diego, CA 92107

I called at 10:17 p.m. about some, they sound like B-52 bombers, numerous, like a fleet of them, flying over my home. They continue to be flying over my house and it's currently 10:58 p.m., that's two minutes to eleven. What the hell is going on? I would like someone to call me back, I would love to get to sleep sometime this evening. This is very disturbing, and I look forward to hearing from you, thank you. That's 40 minutes now, thank you.

Caller was informed that the aircraft were Department of Homeland Security aircraft operating out of NAS North Island. Referred the caller to the D.H.S.

8/17/2010 @ 0500L
Golden Hill
San Diego, CA 92102

The airplane noise was at 4:30 a.m. and again at 5:00 a.m. on August 17th. Thank you.

Explained that the operation was a landing on Runway 27, and that arrivals are permitted twenty-four hours a day.



8/17/2010 @ 0815L
Golden Hill
San Diego, CA 92102

Today is August 17th, and I don't know why the jets taking off, it's a perfectly clear day, but the thrust is extremely hard. Let's see, I guess it's about 8:15 a.m., there was one at 8:10 a.m. and right now. I assume there was some requirements as far as control of the thrust when they takeoff, but apparently they're not doing that today. All right, thanks.

Caller was informed that the aircraft followed all prescribed departure procedures.

8/17/2010 @ 1130L
Mission Hills
San Diego, CA 92103

Yes, I called and left a message yesterday. I live in Mission Hills, there's a noise coming from either the Port area or airport, it's a droning, ongoing noise. It is 11:30 on Tuesday morning, and it's very irritating. You know, if you're testing something, just test it and get it over with, but for it to go on and on and on and on is very annoying. So, whatever it is, fix it, okay!? I would like a call back, if someone could tell what the noise is, and when it's going to stop, thank you.

Caller was informed that the aircraft followed all prescribed run-up procedures.

8/17/2010 @ 1943L
Loma Portal
San Diego, CA 92106

I was having a nice dinner on my patio last evening, at about 7:43 p.m. a plane departed west and then banked to the left and flew right over my house, what may have been on that new southerly departure, but I didn't think that would be in effect at that time, which was yesterday, August 17th, at about 7:43 p.m. I think it was a 767. If you could just research that and give me a call back I'd appreciate it, let me know if that was an ATC clearance to fly a different departure off the airport. It was well south of the 272 radial, I believe it was heading west. Thank you very much.

Explained that the operation was an "Early Turn" departure. The flight track will be sent to the FAA for evaluation.

8/17/2010 @ 1944L
Loma Portal
San Diego, CA 92106

Hi there, I'm reporting an aircraft that flew over our home at 7:44 p.m. on August 17th, Tuesday, a white jet with a red tail, and don't know if that was a flyover or some other mishap. I would like, if possible, an email response as to what that one was all about. Again, that flight was at 7:44 p.m. on August 17th, thank you.

Explained that the operation was an "Early Turn" departure. The flight track will be sent to the FAA for evaluation.

8/17/2010 @ 1944L
Ocean Beach
San Diego, CA 92107

At 7:44 p.m. tonight a plane took off and flew south of my house, which is way south of the agreed 275 degree departure route. I have heard more and more of these flights the past few weeks. Why? Get them back on the agreed departure route! We have kids trying to sleep and those flights shake our home and rattle our windows. Thank you.

Caller did not request a call back. The operation was an "Early Turn" departure. The flight track will be sent to the FAA for evaluation.



| | | |
|--|---|--|
| <p>8/18/2010 @ 0648L Point Loma San Diego, CA 92107</p> | <p>It's 6:48 a.m. and the planes are obnoxious. I went to bed late, I'm up early because of the planes. This is ridiculous! I didn't sign anything, when I bought this very expensive home, that planes fly overhead. You guys are obnoxious.</p> | <p>Caller did not request a call back. The aircraft flew the prescribed runway heading departure.</p> |
| <p>8/19/2010 @ 0636L Point Loma San Diego, CA 92107</p> | <p>Thursday, August 19th, at 6:36 a.m., went to bed late, I'm up early because of the planes. I did not sign for them to fly over my house. I want to know when it's going to stop.</p> | <p>Caller did not request a call back. The aircraft flew the prescribed runway heading departure.</p> |
| <p>8/19/2010 @ 1342L Ocean Beach San Diego, CA 92107</p> | <p>I've lived here a while, and the planes are flying so low and so loud lately that they are shaking objects in my house. You don't have to call me back, I just wanted to report it.</p> | <p>Caller did not request a call back.</p> |
| <p>8/20/2010 @ 0700L Loma Portal San Diego, CA 92106</p> | <p>Hi, and the noise goes from ten at night on, and then starts at six something, and we've been in our house for five years, and never heard until recently, and it's gotten really, really bad. If someone could give us a call back, immediately, that would be great, thank you.</p> | <p>Caller was informed of Air Traffic Control procedures and that no changes have been made to the flight paths.</p> |
| <p>8/21/2010 @ 1910L Ocean Beach San Diego, CA 92107</p> | <p>Yeah, I and lots of other residents, I work at Hodads, so I'm part of the Merchants' Association, I live on Del Monte Avenue. It wouldn't take much for the flights to go over a little bit more south. They don't have to fly straight overhead, especially considering you guys dump a lot of fuel before, and all of your patterns of flying around. 7:00 a.m., to wake up every morning, and have like 30 or 40 planes fly overhead, it gets kind of annoying sometimes. I understand we live in, you know, like, in San Diego, so it's, we're in part of an international airport, but it wouldn't take much to just be considerate of the residents that live right underneath these flight patterns. I think some changes could be made to just kind of co-exist. But yeah, I'm upset with this, and so are a lot of other people. I just wanted to make this statement, thank you.</p> | <p>Caller was informed of Air Traffic Control procedures and that no changes have been made to flight paths.</p> |
| <p>8/25/2010 @ 1743L Ocean Beach San Diego, CA 92107</p> | <p>At 5:43 p.m. there was an aircraft flying quite far south of Ocean Beach, very loud, very low, very far south. It seems they're coming further and further south. I moved away from Voltaire Street because the noise is too loud on Voltaire, I did that five years ago. The planes are creeping farther and farther south every day that I've lived here. Stop it! I'm entitled to peace in my retirement.</p> | <p>Caller was informed of Air Traffic Control procedures and that the aircraft followed all prescribed departure procedures.</p> |



8/25/2010 @ 1756L
Ocean Beach
San Diego, CA 92107

Yes, it's about 5:56 p.m., there was a low flying jet disturbing my peace, and peace of mind. I'm old, I'm disabled, I'm very disturbed by this. I can't sleep.

Caller was informed of Air Traffic Control procedures and that the aircraft, a hushkitted B727, followed all prescribed departure procedures.

8/26/2010 @ 0741L
Ocean Beach
San Diego, CA 92107

It's 7:41 a.m., what the hell was that!? That plane was way too low, way too loud. I'm trying to sleep, I'm disabled. This is ridiculous! This is public record, and I want you to know it's unacceptable. Call me back! I want everyone to know.

Caller was informed of Air Traffic Control procedures and that the aircraft, a MD-80, followed all prescribed departure procedures.

8/26/2010 @ 1530L
Mission Beach
San Diego, CA 92107

Hi it's 3:30 here on Thursday. I'm calling to complain about the plane noise. What is it? What's going on? Are they rerouting planes because of the terminal two construction or what? It's flying so low it's messing all the TV signals up, plus the noise, and there's just so many of these planes. We have not had this many before. I've lived here 18 years now, and this is getting ridiculous. So, I know it's not during sleeping hours, but they need to be rerouted or something. Thank you, bye.

Caller was informed of Air Traffic Control procedures and that the aircraft flew the prescribed runway heading departure.

8/28/2010 @ 0640L
Loma Portal
San Diego, CA 92106

Hi, I had called a couple weeks ago regarding the airplanes and someone called me back, and I need someone to call me back again. We've been hearing, I've been in this house for over five years, and we hear planes all day long now and it's horrible, and every single neighbor of ours hears it too, it's not just us. We need to speak to someone, so if someone could call me back, that would be great, thank you.

Caller was informed of Air Traffic Control procedures and that no changes have been made to the flight paths.

8/31/2010 @ 0715L
Point Loma
San Diego, CA 92106

Hi, I live in Point Loma and I'm just listening to these FedEx planes drive over this morning, over my house. I called another individual in Airport Operations and he was kind enough to give me your number and said that you'd be happy to listen to my story. I will be in my space here, and if you could give me a call when you get the message I definitely would appreciate it. I want to discuss these FedEx prop-jobs that fly over the point. Thanks, bye.

Caller was informed of Air Traffic Control procedures and that the operations, non-runway heading departures by FedEx Cessna C208 turboprops, followed all prescribed departure procedures.





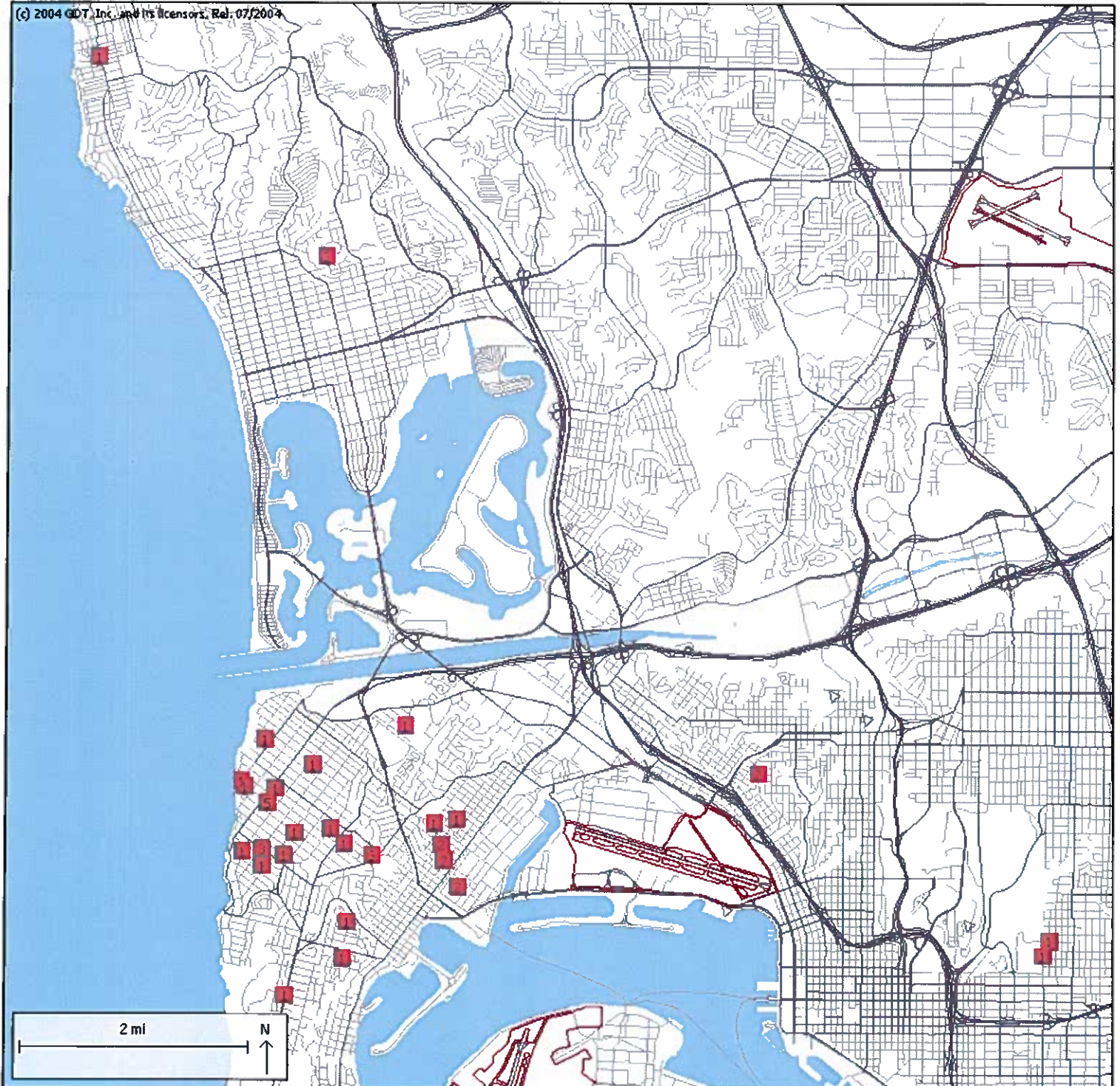
August 2010

Aircraft Noise Complaint Caller's Location in relation to
San Diego International Airport (SDIA)
27 Households; 41 Complaints



SAN DIEGO
INTERNATIONAL
AIRPORT

(c) 2004 GDT, Inc. and its licensors. Ref: 07/2004



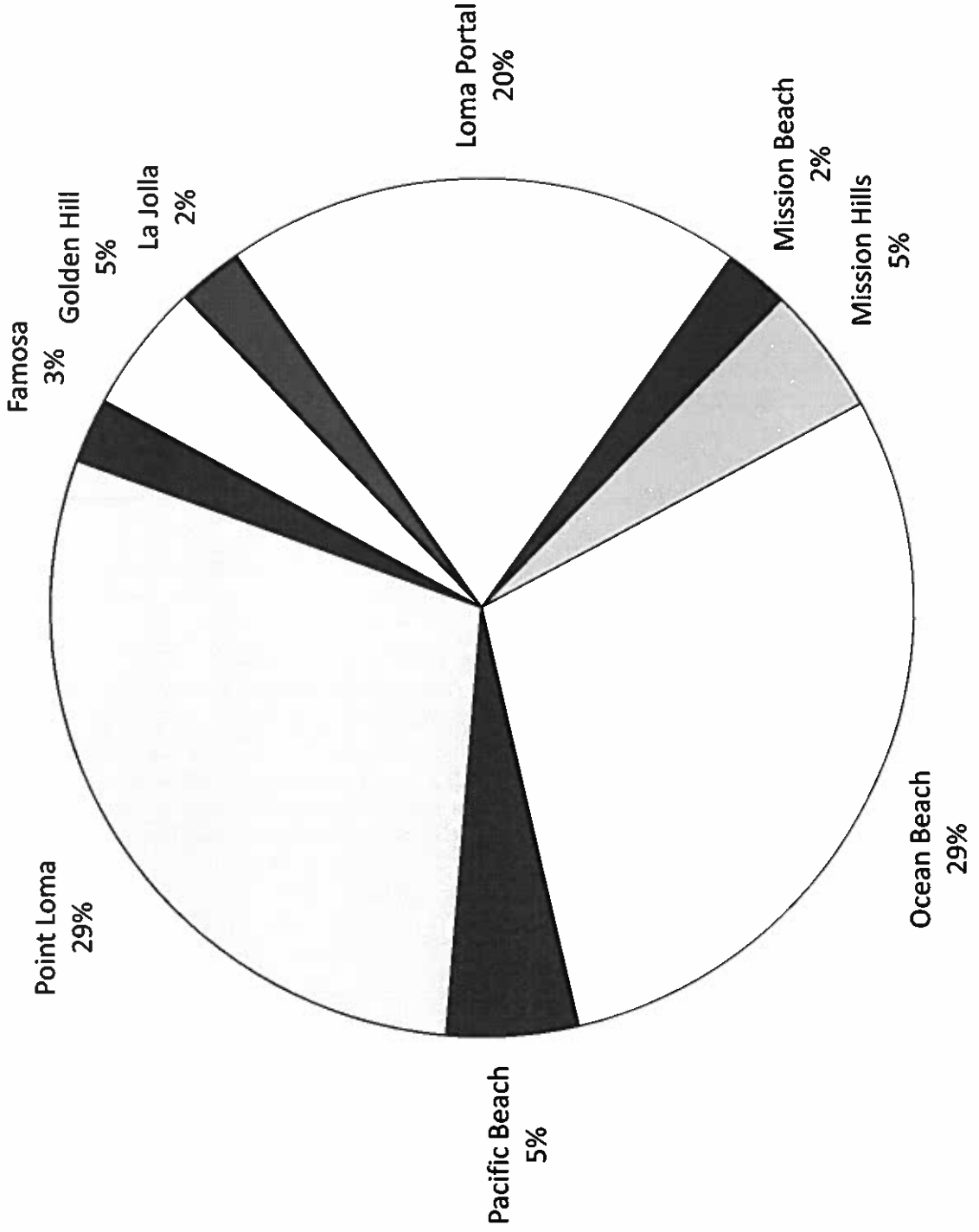
Aircraft Noise Complaint Distribution by Neighborhood



SAN DIEGO
INTERNATIONAL
AIRPORT

August 2010

TOTAL CALLS: 41



Aircraft Noise Complaint Distribution by Household

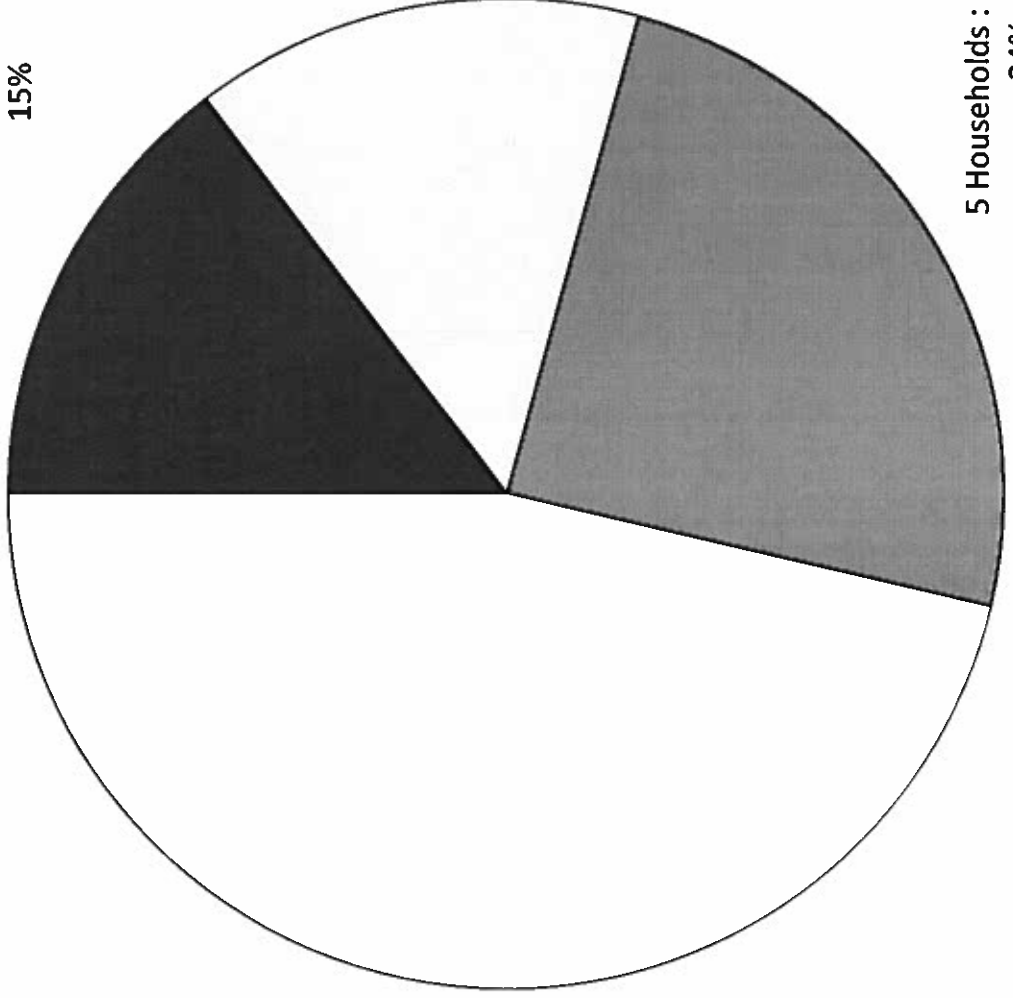


SAN DIEGO
INTERNATIONAL
AIRPORT

August 2010

TOTAL CALLS: 41

1 Household : 6 Calls =
15%



19 Households : Single
Call = 46%

2 Households : 3 Calls =
15%

5 Households : 2 Calls =
24%

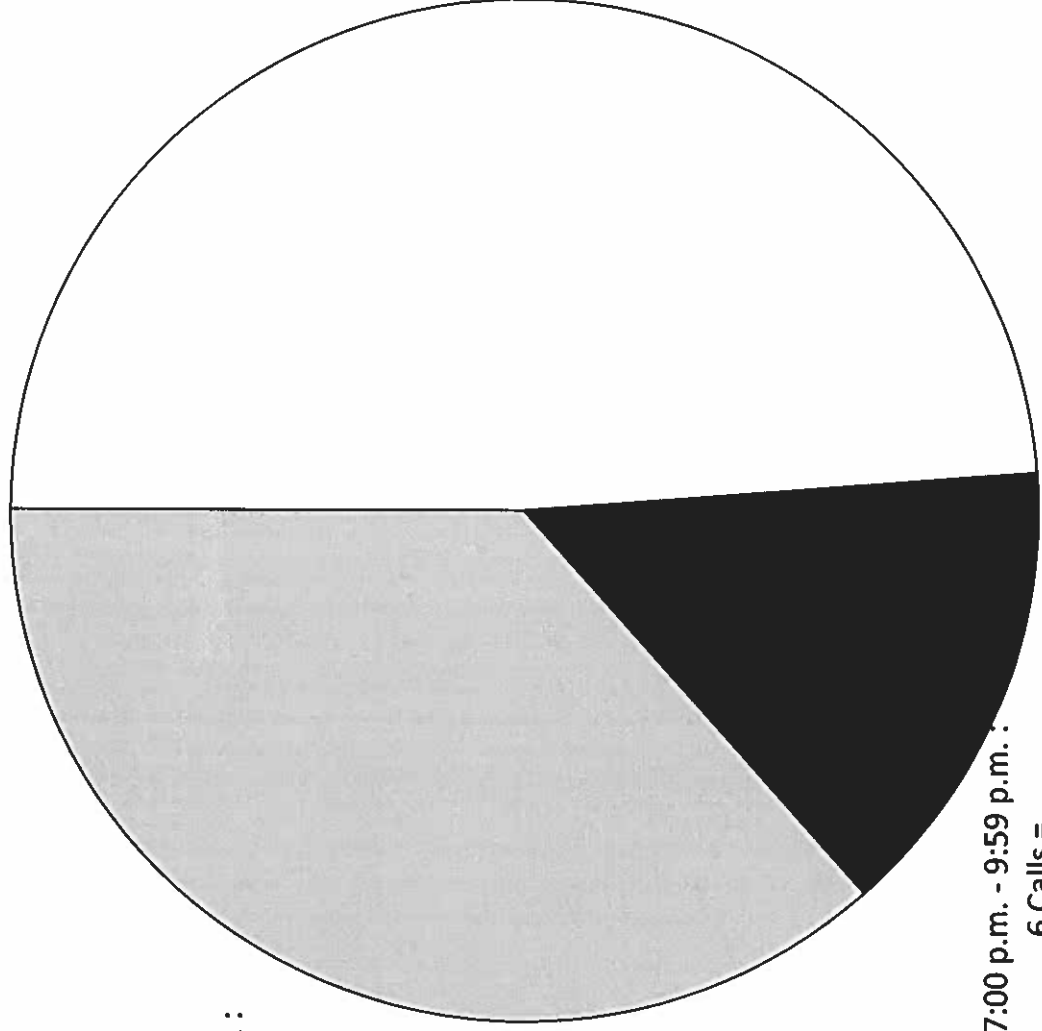
Aircraft Noise Complaint Distribution by Time of Day



SAN DIEGO
INTERNATIONAL
AIRPORT

August 2010

TOTAL CALLS: 41



10:00 p.m. - 6:59 a.m. :
15 Calls =
36%

7:00 a.m. - 6:59 p.m. :
20 Calls =
49%

7:00 p.m. - 9:59 p.m. :
6 Calls =
15%

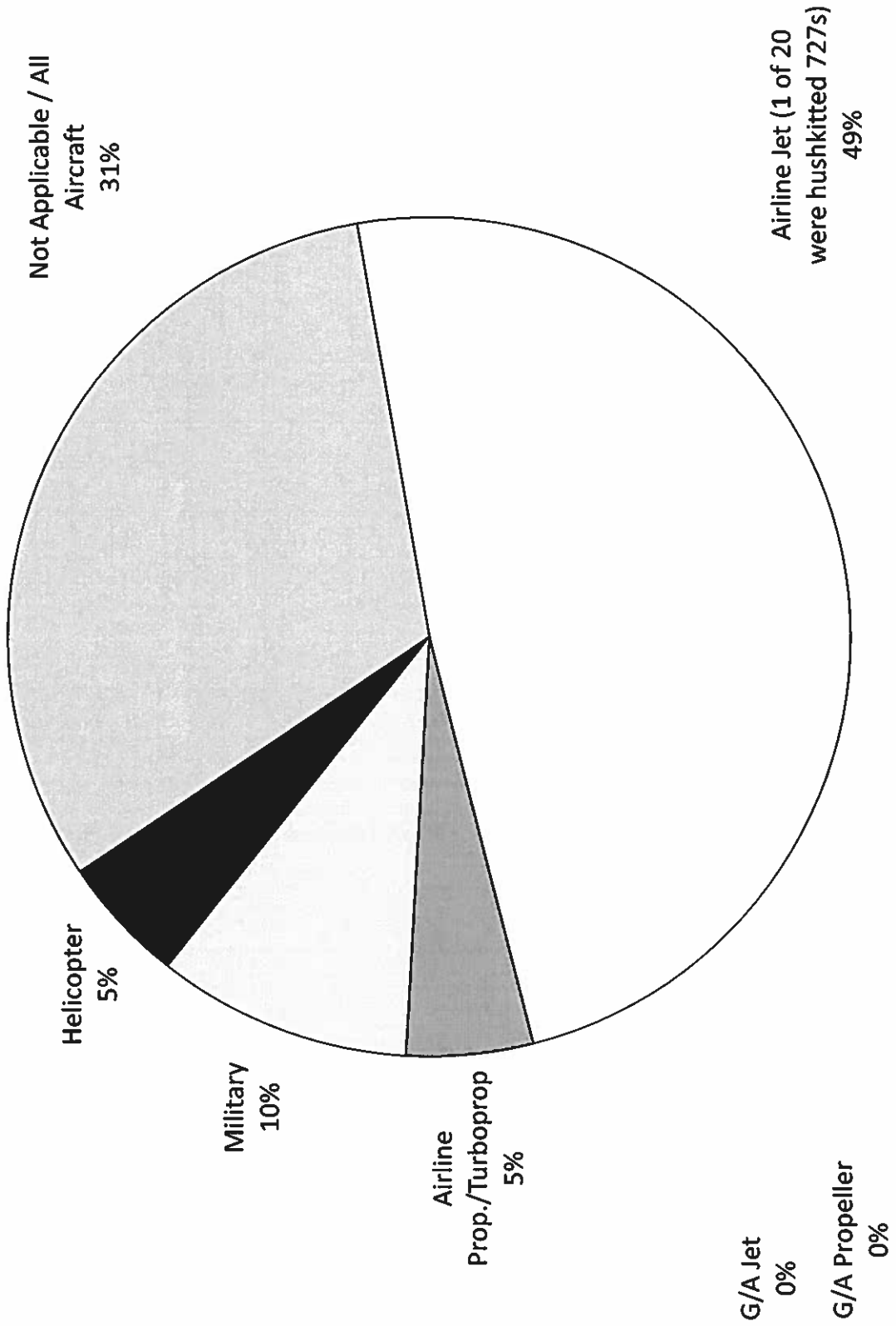
Aircraft Noise Complaint Distribution by Aircraft Type



SAN DIEGO
INTERNATIONAL
AIRPORT

August 2010

TOTAL CALLS: 41



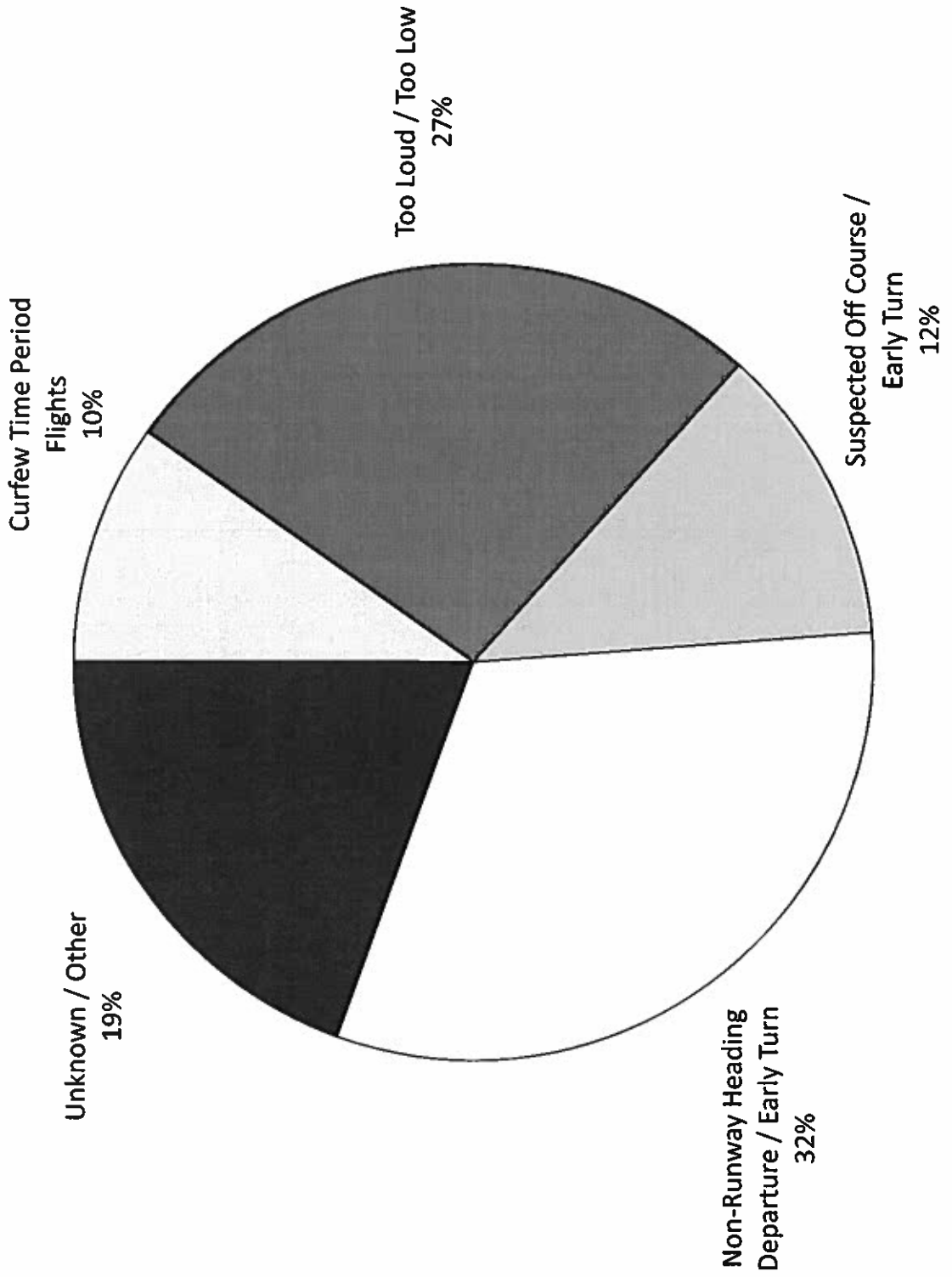
Aircraft Noise Complaint Distribution by Cause



SAN DIEGO
INTERNATIONAL
AIRPORT

August 2010

TOTAL CALLS: 41



San Diego County Regional Airport Authority

**Aircraft Noise Complaint Distribution By Neighborhood
San Diego International Airport
Summary of Aircraft Noise Complaints - 2010**

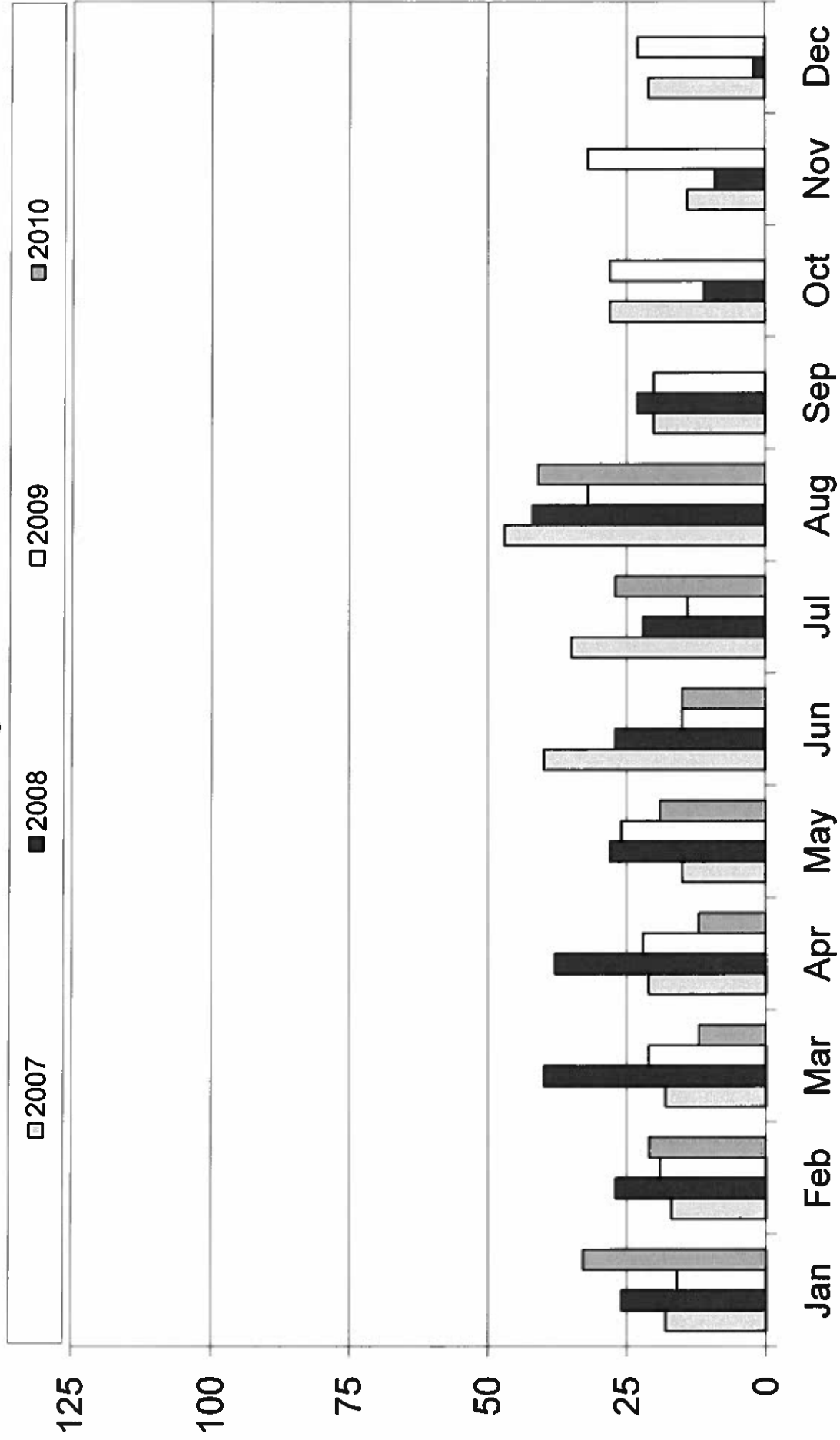
| NEIGHBORHOOD | JAN | FEB | MAR | APR | MAY | JUN | JUL | AUG | SEP | OCT | NOV | DEC | TOTAL |
|--------------------|-----------|-----------|-----------|-----------|-----------|-----------|-----------|-----------|----------|----------|----------|----------|------------|
| Bay Park | | | | | | | | | | | | | 0 |
| Bonita | | | | | | | | | | | | | 0 |
| Chollas Creek | | | | | | | | | | | | | 0 |
| Chula Vista | | | | | 1 | | | | | | | | 1 |
| Clairemont | | | | | | 1 | | | | | | | 1 |
| County of S.D. | | | | | | | | | | | | | 0 |
| Coronado | | | | | | | | | | | | | 0 |
| Del Cerro | | | | | | | | | | | | | 0 |
| Downtown S.D. | | | | | | | | | | | | | 0 |
| El Cajon | | | | | | | | | | | | | 0 |
| Encanto/Lomita | | | | | 1 | | | | | | | | 1 |
| Famosa | | | | | 2 | 1 | 2 | 1 | | | | | 6 |
| Golden Hill | 1 | | | | 1 | 1 | 2 | 2 | | | | | 7 |
| Hillcrest | | | | | | | | | | | | | 0 |
| La Jolla | | | | | | | | 1 | | | | | 1 |
| Lakeside | | | | | | | | | | | | | 0 |
| La Mesa | | | | | | | | | | | | | 0 |
| Lemon Grove | | | | | | | | | | | | | 0 |
| Liberty Station | | | | | | | | | | | | | 0 |
| Loma Portal | 3 | 2 | 3 | 2 | 3 | 1 | 6 | 8 | | | | | 28 |
| Middletown | | | | | 1 | | | | | | | | 1 |
| Midway | | | 1 | | | | | | | | | | 1 |
| Mission Beach | 10 | 2 | 1 | 2 | | 2 | 1 | 1 | | | | | 19 |
| Mission Hills | | | | | | | | 2 | | | | | 2 |
| Mount Hope | | | | | | | | | | | | | 0 |
| Mountain View | | | | | | | | | | | | | 0 |
| Normal Heights | | | | | | | | | | | | | 0 |
| North Park | | | | | | | | | | | | | 0 |
| Ocean Beach | 6 | 1 | | 1 | 2 | | 4 | 12 | | | | | 26 |
| Pacific Beach | 4 | 9 | 4 | 3 | 2 | 1 | 5 | 2 | | | | | 30 |
| Paradise Hills | | | | | | | | | | | | | 0 |
| Point Loma | 8 | 6 | 3 | 3 | 6 | 6 | 7 | 12 | | | | | 51 |
| Rolando | 1 | | | | | 1 | | | | | | | 2 |
| South Park | | | | 1 | | 1 | | | | | | | 2 |
| Spring Valley | | 1 | | | | | | | | | | | 1 |
| Talmadge | | | | | | | | | | | | | 0 |
| University City | | | | | | | | | | | | | 0 |
| University Heights | | | | | | | | | | | | | 0 |
| Uptown | | | | | | | | | | | | | 0 |
| TOTAL | 33 | 21 | 12 | 12 | 19 | 15 | 27 | 41 | 0 | 0 | 0 | 0 | 180 |

Monthly Aircraft Noise Complaints



SAN DIEGO
INTERNATIONAL
AIRPORT

2007 – August 2010



Annual Aircraft Noise Complaints



SAN DIEGO
INTERNATIONAL
AIRPORT

2007 – 2010 (August)

