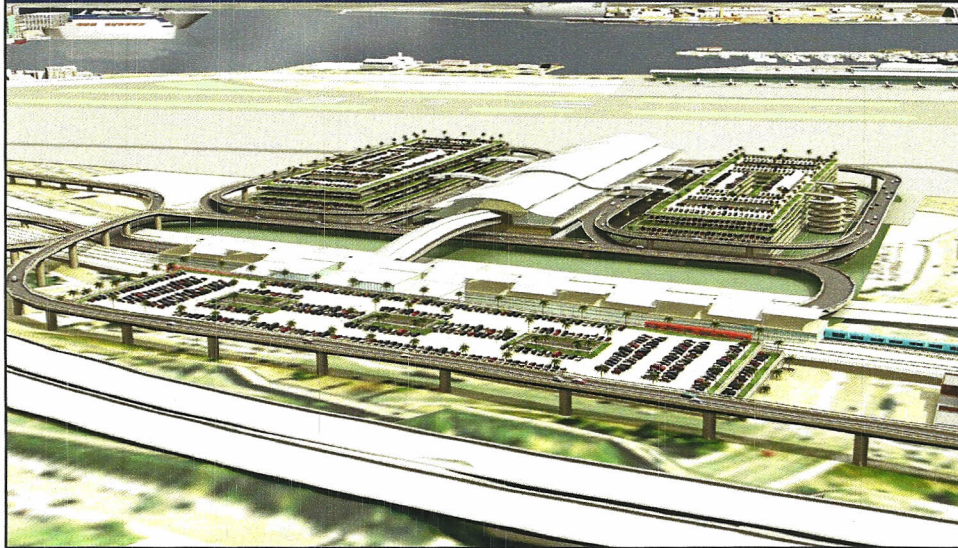


# Destination Lindbergh:

Intermodal Transportation Center Update



July 2, 2010



## Background

- Destination Lindbergh Master Plan recommended:
  - Northside airport terminal complex
  - Adjacent ITC facility to provide direct connections from transit/Amtrak/HSR
  - Direct freeway ramps from I-5

## ITC Site Planning Status

- **Northside Airport Phase 1 improvements**
  - Airport Authority
    - CONRAC facility
    - On-airport shuttle
  - SANDAG
    - ITC site design and redevelopment opportunities
    - Consolidated facility serves Trolley, COASTER, Bus, Amtrak
    - Pedestrian bridge from ITC to CONRAC/airport shuttle
    - Trolley/COASTER/Amtrak grade separations
- **Long Range ITC facility:  
High Speed Rail terminal station**

3

SANDAG

## Study Coordination

- **Technical Advisory Committee formed to coordinate studies among stakeholders**
  - San Diego County Regional Airport Authority
  - Caltrans
  - City of San Diego
  - MTS and NCTD
  - Port of San Diego
  - CA High Speed Rail Authority
  - SANDAG
- **City of San Diego contributed \$200,000 towards ITC study**

4

SANDAG

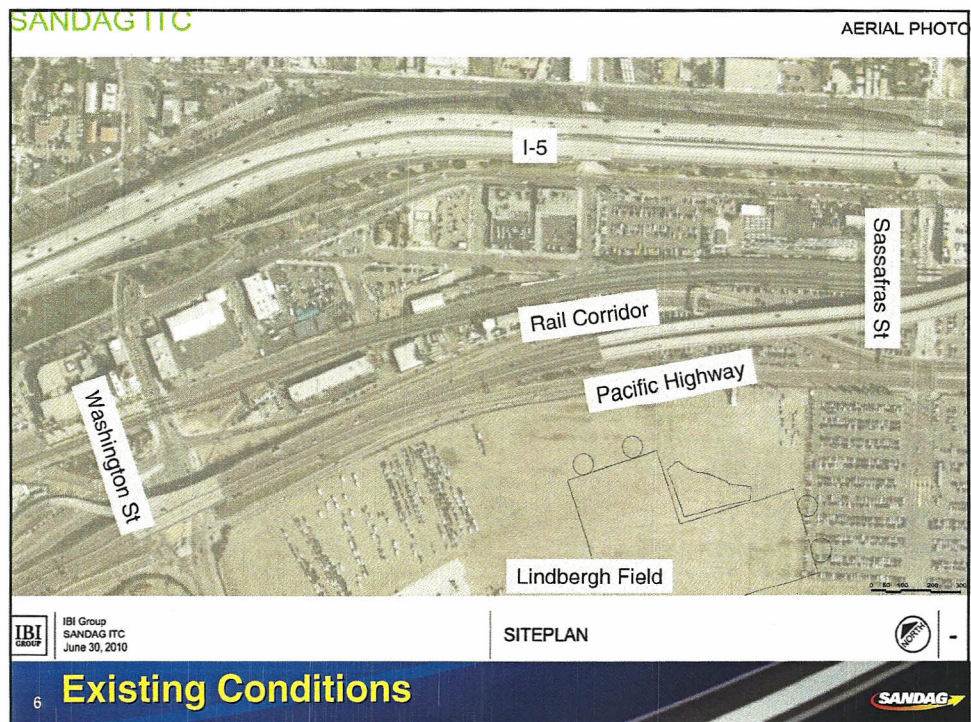
## Preferred ITC Design Layouts

Preferred design layouts developed with input from TAC

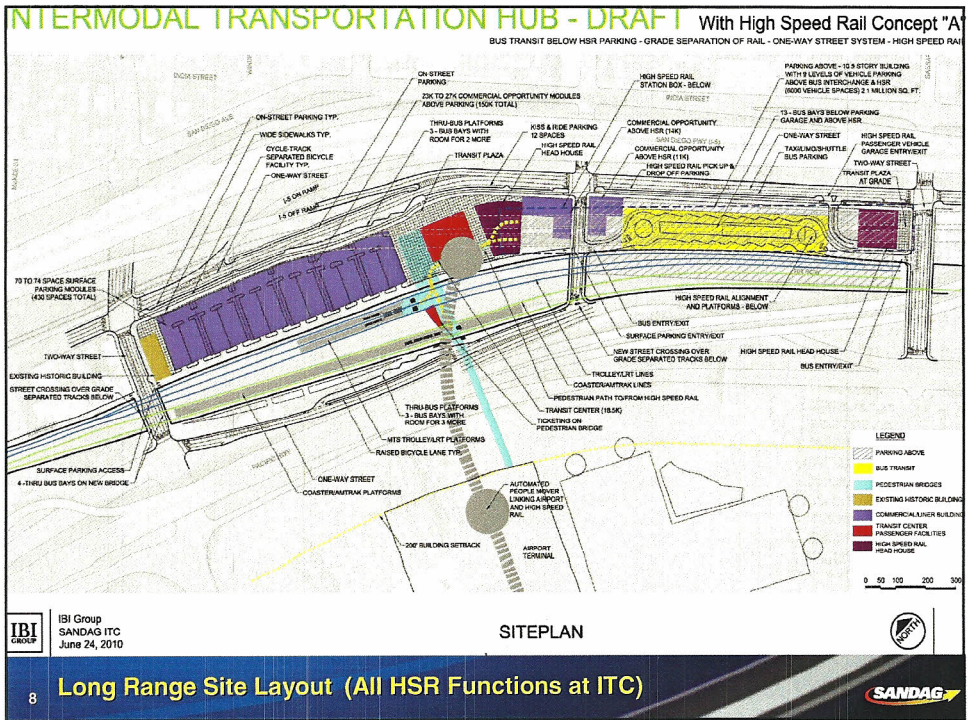
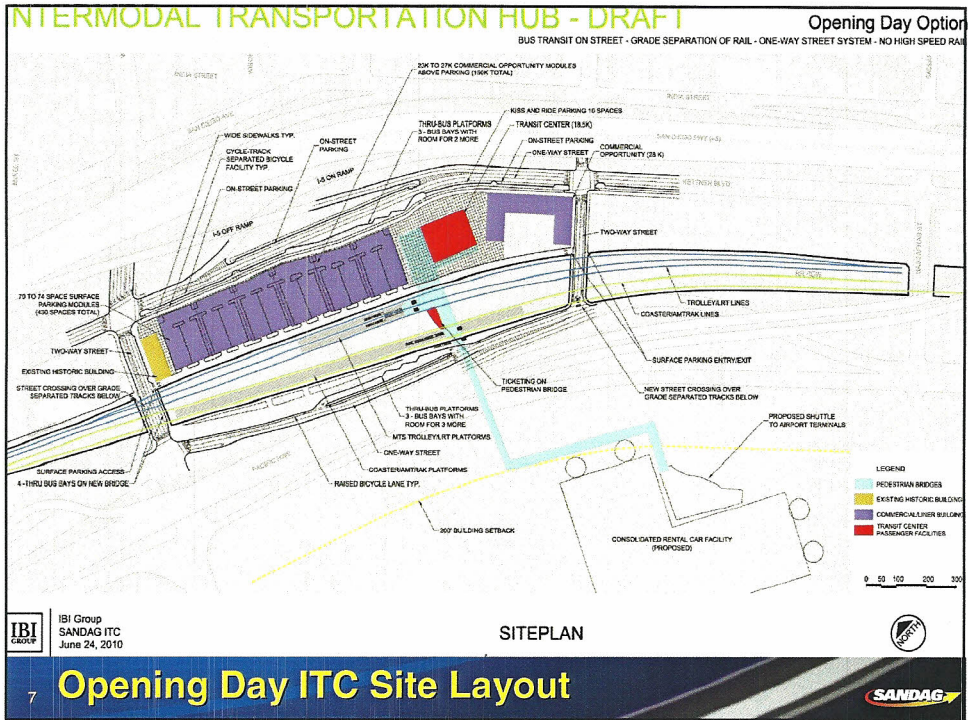
1. Opening Day: CONRAC & Phase 1 ITC
2. Long Range: Northside Air Terminal and HSR
  - All HSR functions at ITC
  - Some HSR functions at airport terminal

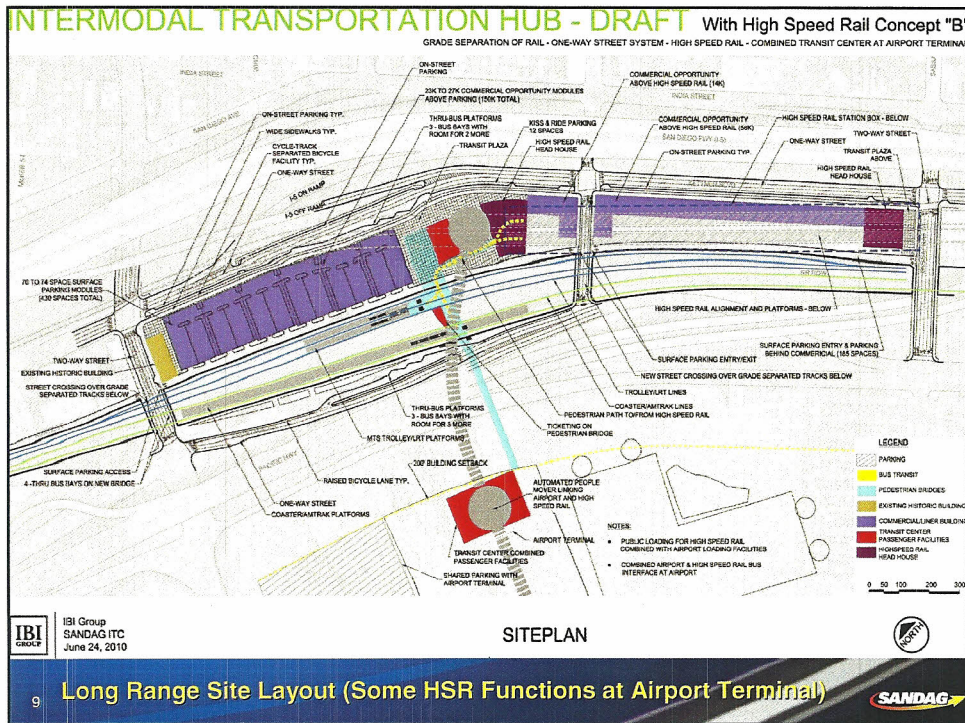
5

SANDAG



## Existing Conditions





- ## Next Steps
- **Refine Opening Day option and prepare cost estimate** (by end of 2010)
  - **Prepare initial concept for direct freeway ramps** (Caltrans – by June 2011)
  - **Prepare preliminary design for rail grade separations** (by December 2011)
  - **Sets stage for formal environmental studies** (could begin in 2011, but currently unfunded)
- 10 SANDAG