

SAN DIEGO COUNTY REGIONAL AIRPORT AUTHORITY

P.O. BOX 82776, SAN DIEGO, CA 92138-2776
619.400.2400 WWW.SAN.ORG

Date: November 7, 2008
To: Distribution
Subject: Aircraft Noise Complaint Report – October 2008

A copy of the noise complaints received by Airport Noise Mitigation at San Diego International Airport for the month of October 2008 is submitted for your information. This report is required as a condition of the Airport Noise Variance and is submitted to local and state agencies.

This report includes:

- Aircraft Noise Complaint Log
- Aircraft Noise Complaint Callers' Location Map
- Aircraft Noise Complaint Distribution by Neighborhood
- Aircraft Noise Complaint Distribution by Household
- Aircraft Noise Complaint Distribution by Time of Day
- Aircraft Noise Complaint Distribution by Aircraft Type
- Aircraft Noise Complaint Distribution by Cause

Comparative Charts:

- Year-to-Date Aircraft Noise Complaint Statistics by Neighborhood
- Monthly Aircraft Noise Complaints (2005 – October 2008)
- Annual Aircraft Noise Complaints (2005 – October 2008)

Threats against aircraft are taken seriously and will be reported to the appropriate federal law enforcement agency. Complaints containing profanity or insinuation of threat to Airport Authority or affiliated staff will not be included in this log.



Dan Frazee
Director, Airport Noise Mitigation

Enclosures

DF/rja



SAN DIEGO
INTERNATIONAL
AIRPORT

Aircraft Noise Complaint Report
November 7, 2008
Page Two

Distribution:

Patricia Delgado, Aeromexico
Greg Trinkaus, Airborne Express
Irwin Adams, Air Tran Airlines
Danny Flores, Alaska Airlines
Lynn Silva, America West Airlines/US Airways
Tina Moman, American Airlines
Steve Terry, American Eagle
John Dickman, BAX Global
Jean Buggs, Continental Airlines
Jeff Rasor, Delta Air Lines
Jim Roberts, Express Jet
Bobbie Schlindler, Federal Express
Catrice Miller, Frontier Airlines
Janet Nix, Hawaiian Airlines
Karla Caroland, Independence Air
Brian Towle, Jet Blue Airways
Nick Hollinger, Midwest Airlines
Jose Antunez, Northwest Airlines
Roy Gourley, SkyWest Airlines
Cheryl Black, Southwest Airlines
Darwin Schussler, Sun Country
Al Turner, United Airlines
Randy Churchward, United Parcel Service
Tim Kennell, UPS-Supply Change Solution
Jane Clare, WestJet Airways
Sean Mahoney, United States Coast Guard
Linda Adams, SOCAL TRACON
Jeff Tittle, Air Traffic Manager, Lindbergh Tower
Betsy Eskridge, Division of Aeronautics (CalTrans)
Airport Noise Advisory Committee



Airport Noise Mitigation Aircraft Noise Complaint Log October 2008

Event Date & Time Neighborhood City, State, Zip Code	Comments	Resolution Comments
10/02/2008 @ 2119L Point Loma San Diego, CA, 92106	Hi, I would like a return phone call, and about 9:19 p.m. we had a plane fly very low and very loud over our house, this is unusual. The last time we heard something like this is when a plane was making an emergency landing into Lindbergh Field. This one sounded like it was taking off, and it was a little nerve wracking to hear this suddenly. So, we were sort of wondering if someone could tell us what's going on there. Thank you, bye-bye.	Caller was informed of Air Traffic Control procedures and that the operation was a missed approach from NAS North Island. Referred the caller to the U.S. Navy for more information.
10/03/2008 @ 1630L Encanto San Diego, CA, 92114	Hi, I'd like to report the airplanes, today is October 3rd, but for the last, I'd say, two to three weeks I've noticed that airplanes are flying directly over my house, instead of taking the ILS into Lindbergh Field, and it's causing a lot of noise over my house and backyard. If you could please have the airplanes follow the ILS in, would be greatly appreciated. And if someone would please call me back, thank you.	Caller was informed of Air Traffic Control procedures and that the aircraft followed all prescribed arrival procedures.
10/05/2008 @ 0114L Loma Portal San Diego, CA, 92106	I'd like to register a noise complaint, I was woken up by a jet departure during curfew hours, off of Lindbergh Field, westbound, at 1:14 a.m. on Sunday morning, October 15th. Thank you, bye.	Caller did not request a call back. The operation was a life-flight departure that is exempt from the Curfew.
10/08/2008 @ 1354L Point Loma San Diego, CA, 92107	I live in Point Loma. When I moved here in 1997 I never heard planes. Now they are loud from 6:30 in the morning until sometimes the middle of the night. It is relatively recent, about the last 3 months or so. What's going on? I can't find anything about it on the internet, but other people must be bothered too.	Caller was informed of Air Traffic Control procedures and that no changes have been made to the flight paths.



10/09/2008 @ 1344L
Famosa
San Diego, CA, 92107

This is a complaint about the increased air flight traffic during the "no flight" times of 11:00 p.m. to 6:30 a.m. As a resident of Loma Portal since 1982, I was aware my home was in the flight path, but was also aware that from 11:00 p.m. until 6:30 a.m. there would be no flights over my home. These flights are on the increase. Each month I notice I am awoken more and more frequently in the middle of the night with the incredible loud sound of these aircrafts over my home. Exception is no longer the rule, it is occurring quite regularly. Last night there were several flights over my head from 3:00 a.m. until 5:00 a.m. preventing me from returning to sleep. I would like to know what is going to be done about this. It is absolutely unacceptable. Possibly a quadrupling of the fines would cause a significant reduction of flights during non flight hours! I believe that all the fines collected by the airport should really be distributed to the residents who have to suffer this extraordinary disruption of their lives, rather than just be added to the coffers of the Airport Authority. After all, we are the ones who have to suffer the consequences of these invasive nightly disturbances. Thank you for your kind consideration in this matter, and I await your reply.

Caller was informed of the Airport Use Regulations, Time of Day Restrictions, and that arrivals are permitted twenty-four hours a day.

10/10/2008 @ 0710L
Point Loma
San Diego, CA, 92107

Hi there, and I would like a return call, this is October 10th, and I want to know what's going on this morning. I just now had another flight that's going over me, which is was west and south of the usual flight pattern. And about 15 minutes ago we had a direct, over my house, flight. That's very unusual, and I noticed that I've been using a fan because of the heat, so in the morning the noise had been muffled out somewhat this summer, but there has been a lot of out of corridor flights. I'm assuming it might be because of wanting to save fuel, or maybe some other reason. But, if you would, give me a call, thank you, bye.

Caller was informed of Air Traffic Control procedures and that the aircraft, Cessna C208 turboprops, non-runway heading departures, followed all prescribed procedures.

10/20/2008 @ 1647L
Point Loma
San Diego, CA, 92107

Hello, today, October 20th, at approximately 4:47 p.m. in the afternoon there was a Southwest flight that took off and went south of the Ocean Beach Pier. And about a minute or two later there was a second flight, I did not, I was not able to tell who the airline company was, but did exactly the same thing. Thank you very much, bye-bye.

Caller lives one mile south of the runway centerline. Caller was informed that the aircraft flew the prescribed runway heading departure.



10/23/2008 @ 0615L
Loma Portal
San Diego, CA, 92106

Good morning, I was woken up by a jet departure out of Lindbergh Field, to the west, during curfew hours at 6:15 a.m., October 23rd. And since it was during curfew hours, could you please give me a call at your convenience, thank you, bye.

Caller was informed of the Airport Use Regulations, Time of Day Restrictions, and that the operation was a Life-flight departure that is exempt from the Curfew.

10/23/2008 @ 2325L
Pacific Beach
San Diego, CA, 92109

Hi, it's October 23rd, and at 11:25 p.m., because it's a warm evening, a jet went shooting over, headed sort of east, I guess out of Lindbergh, and just now at 11:28 p.m. I see a jet out here, maybe going into Lindbergh to land. Well, I'll tell you, these two crossed paths within a few hundred feet of each other. If they had been thirty seconds, the last one, was thirty seconds sooner, I mean these guys aren't messing around. So, I'm surprised to see that happen. But anyway, I think one was going out, one was coming in, five hundred feet apart and thirty seconds to a minute between each other. So anyway, I just don't like them flying over the house this late at night, loud. Thank you.

Caller did not request a call back. the aircraft followed all prescribed Air Traffic Control procedures.

10/30/2008 @ 2308L
Ocean Beach
San Diego, CA, 92107

The flight departing at about 11:08 p.m. on October 30th was way too loud.

Caller did not request a call back. The aircraft, a hushkitted B727, followed all prescribed procedures.

10/31/2008 @ 1007L
Encanto
San Diego, CA, 92114

I communicated with you last month about increased air traffic over my home. I was contacted by your noise technician that confirmed the increase in noise, which was attributed to the extraordinary great weather we were having. While there may be science to support the claim, what I see with my own two eyes is that the flights are lower and closer to the homes in my neighborhood than was the case previously. Maybe having something to do with the cost of fuel or who knows? However, as a result of the increased noise, I've had to have my windows and doors replaced to try to achieve a semblance of quiet in my home. What is the process to be reimbursed for cost inordinately incurred? What's required? Please let me know.

Caller was informed of Air Traffic Control procedures and that no changes have been made to the flight paths. Referred the caller to the Quieter Homes Program.



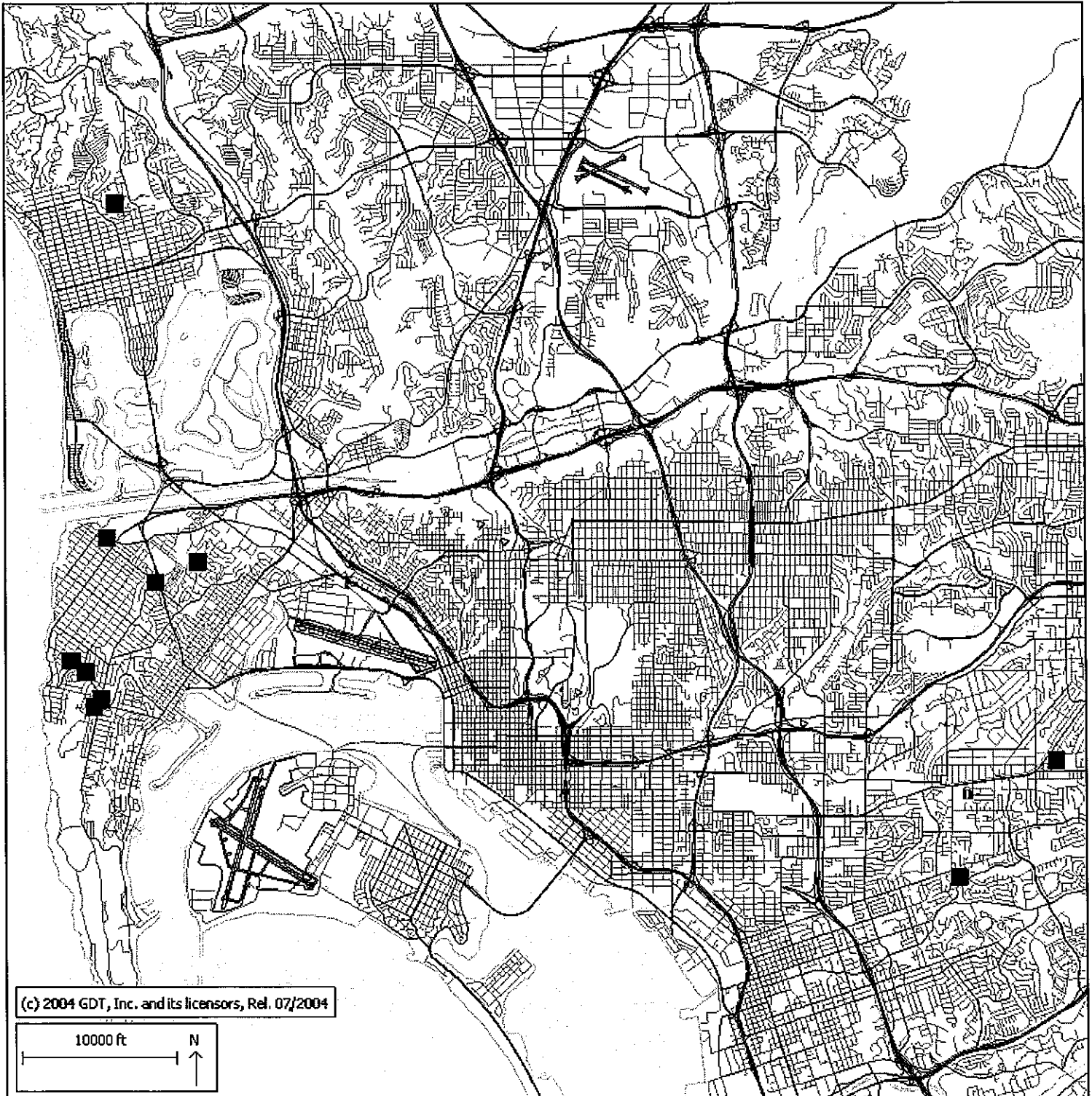


October 2008

Aircraft Noise Complaint Caller's Location in relation to
San Diego International Airport (SDIA)
10 Households; 11 Complaints



SAN DIEGO
INTERNATIONAL
AIRPORT



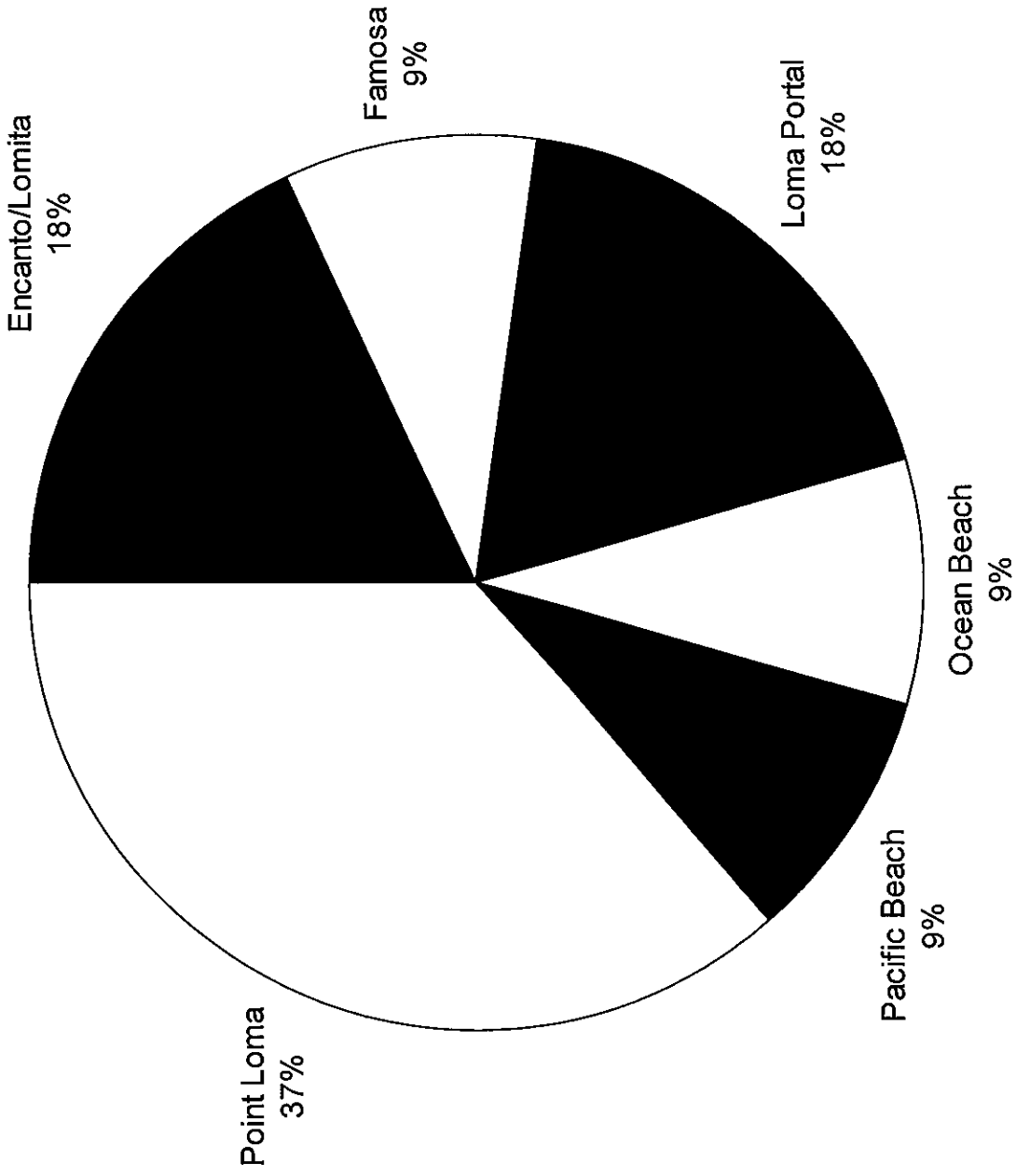
Aircraft Noise Complaint Distribution by Neighborhood



SAN DIEGO
INTERNATIONAL
AIRPORT

October 2008

TOTAL CALLS: 11



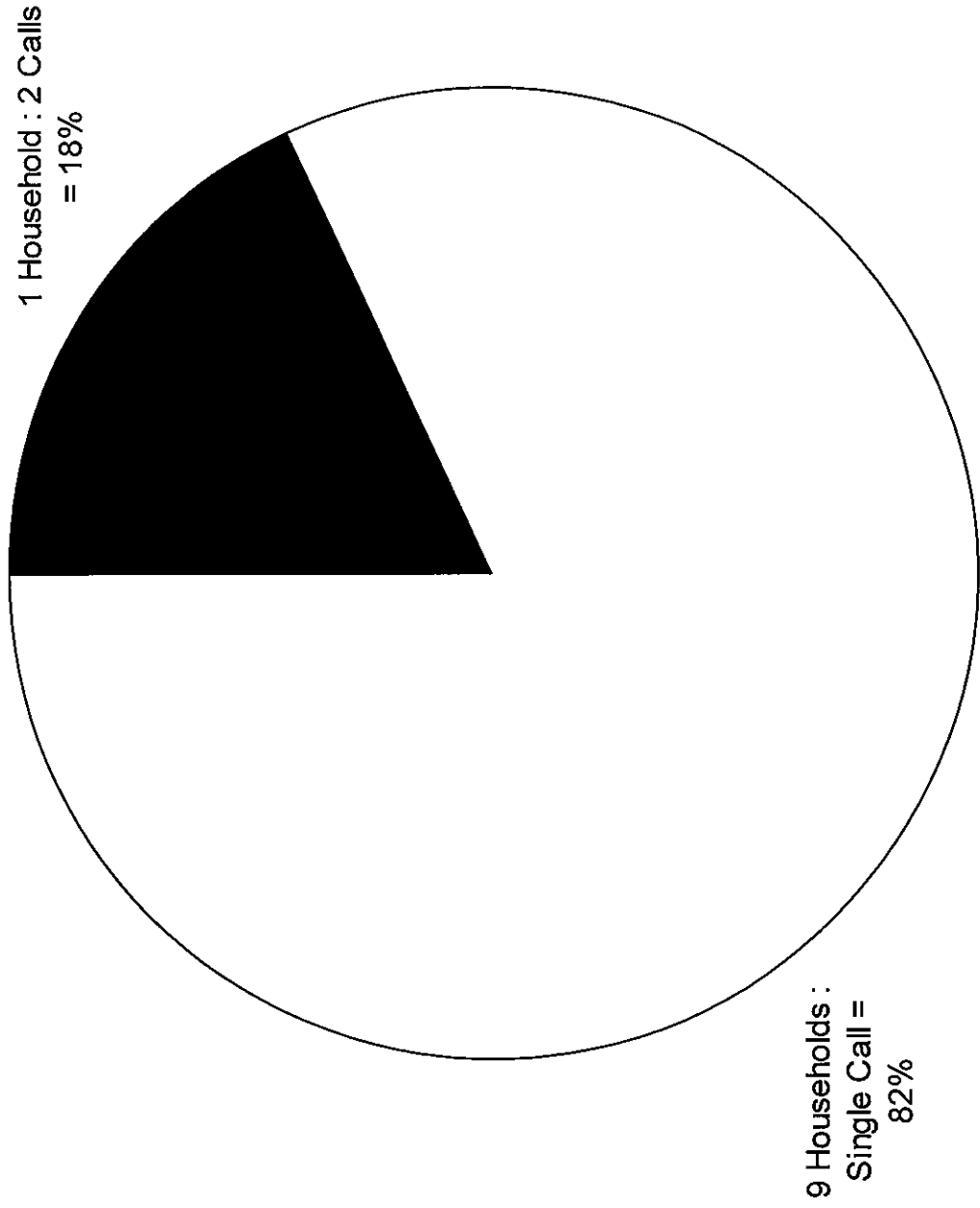
Aircraft Noise Complaint Distribution by Household



SAN DIEGO
INTERNATIONAL
AIRPORT

October 2008

TOTAL CALLS: 11



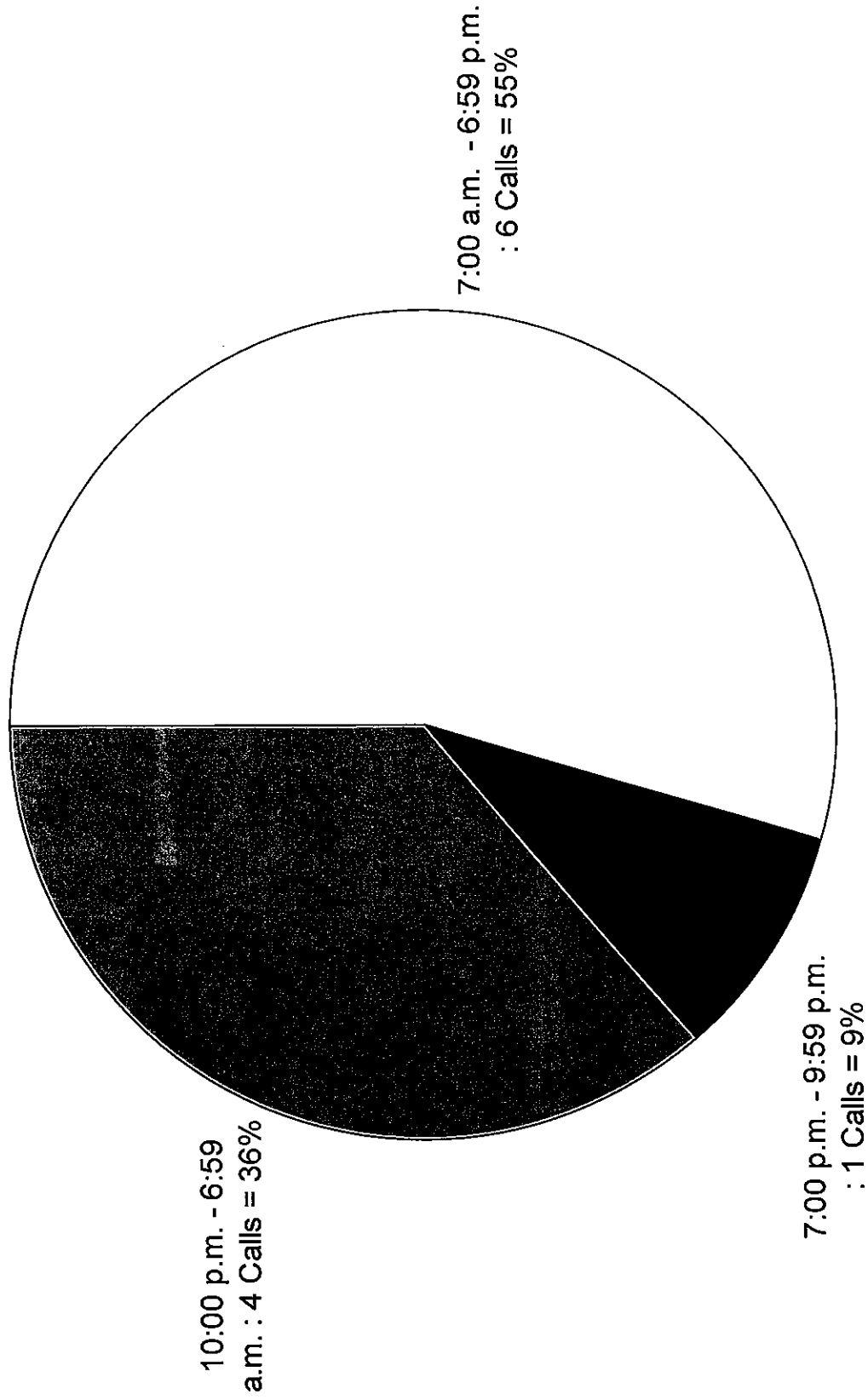
Aircraft Noise Complaint Distribution by Time of Day



SAN DIEGO
INTERNATIONAL
AIRPORT

October 2008

TOTAL CALLS: 11



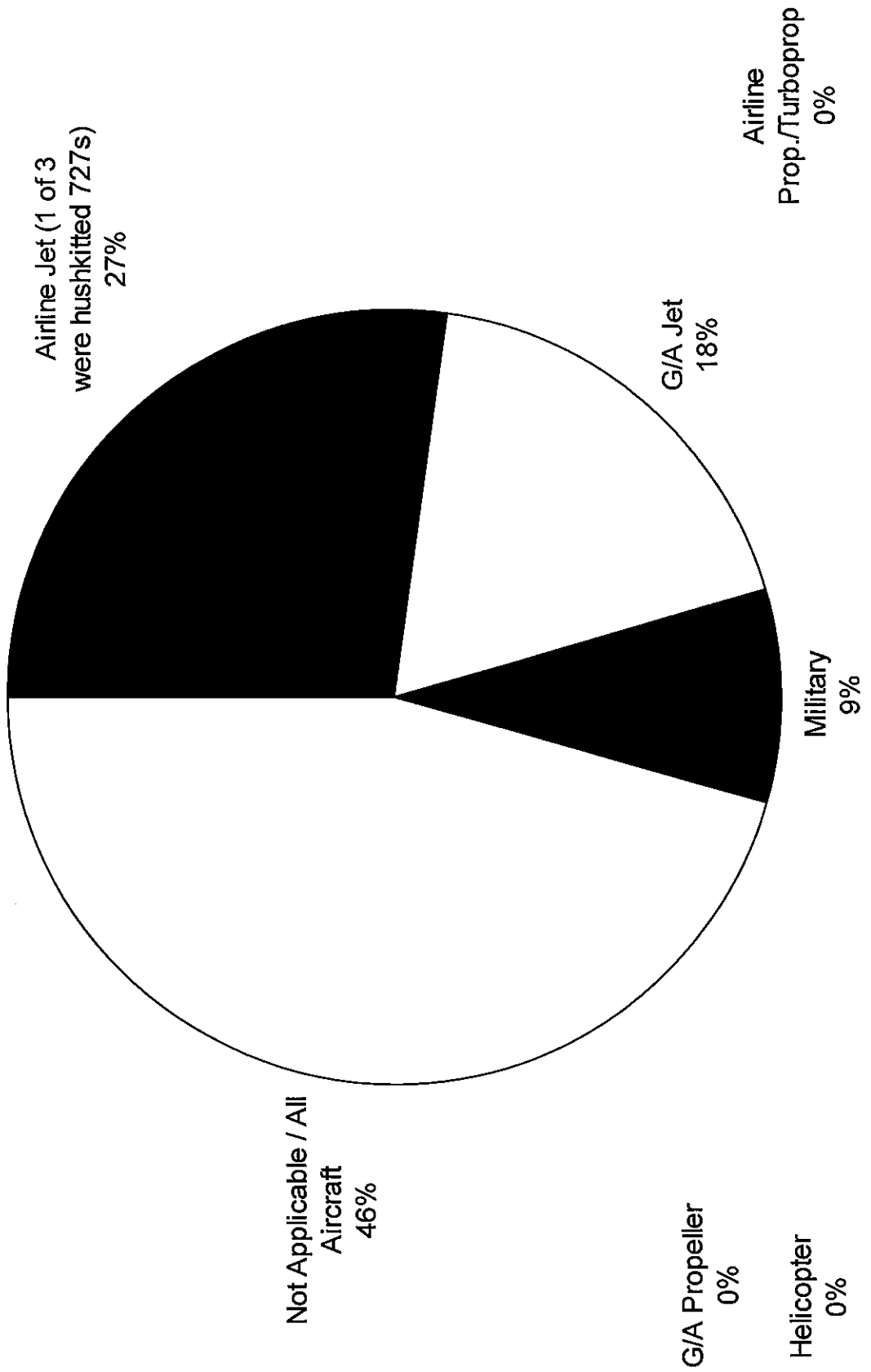
Aircraft Noise Complaint Distribution by Aircraft Type



SAN DIEGO
INTERNATIONAL
AIRPORT

October 2008

TOTAL CALLS: 11



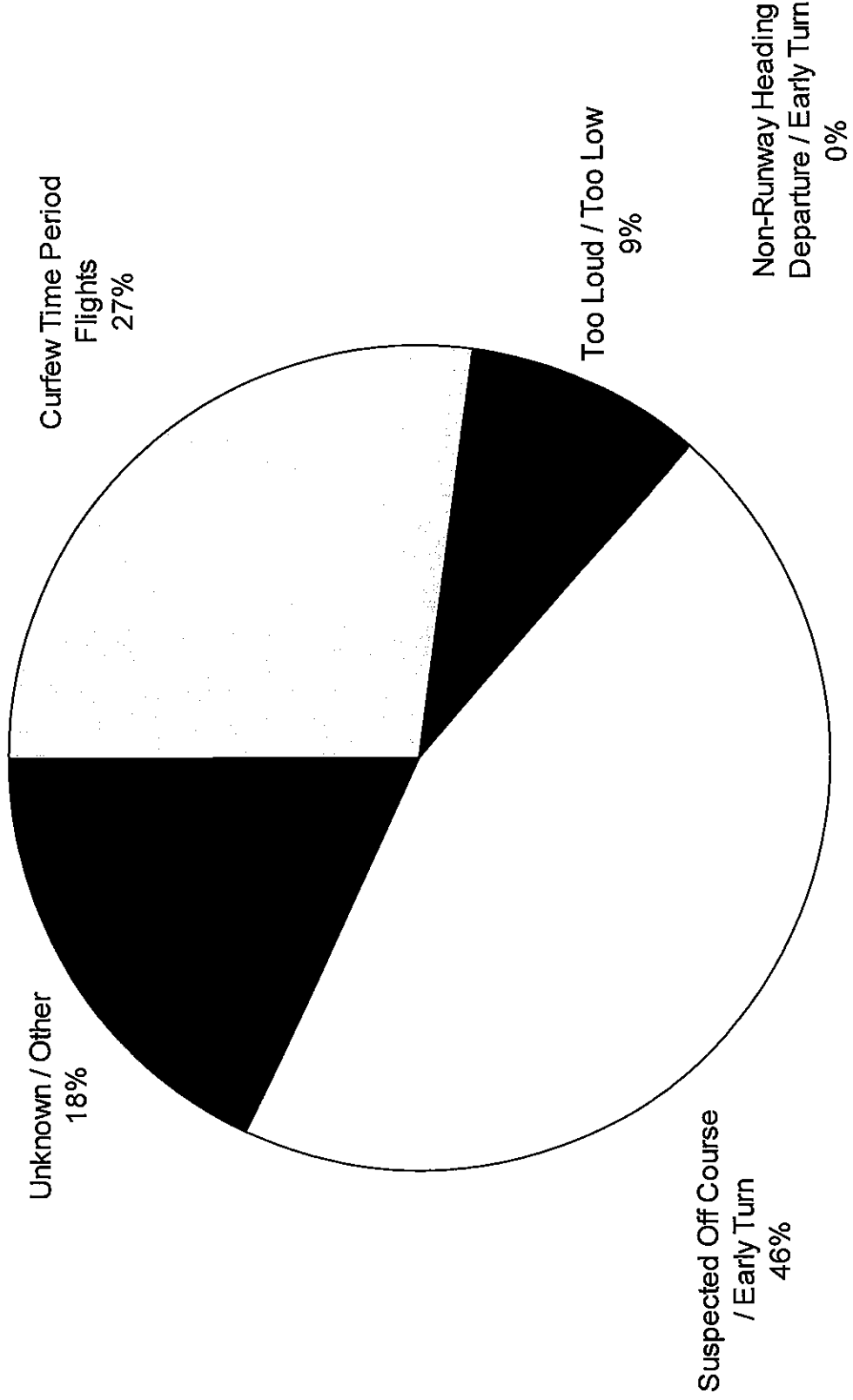
Aircraft Noise Complaint Distribution by Cause



SAN DIEGO
INTERNATIONAL
AIRPORT

October 2008

TOTAL CALLS: 11



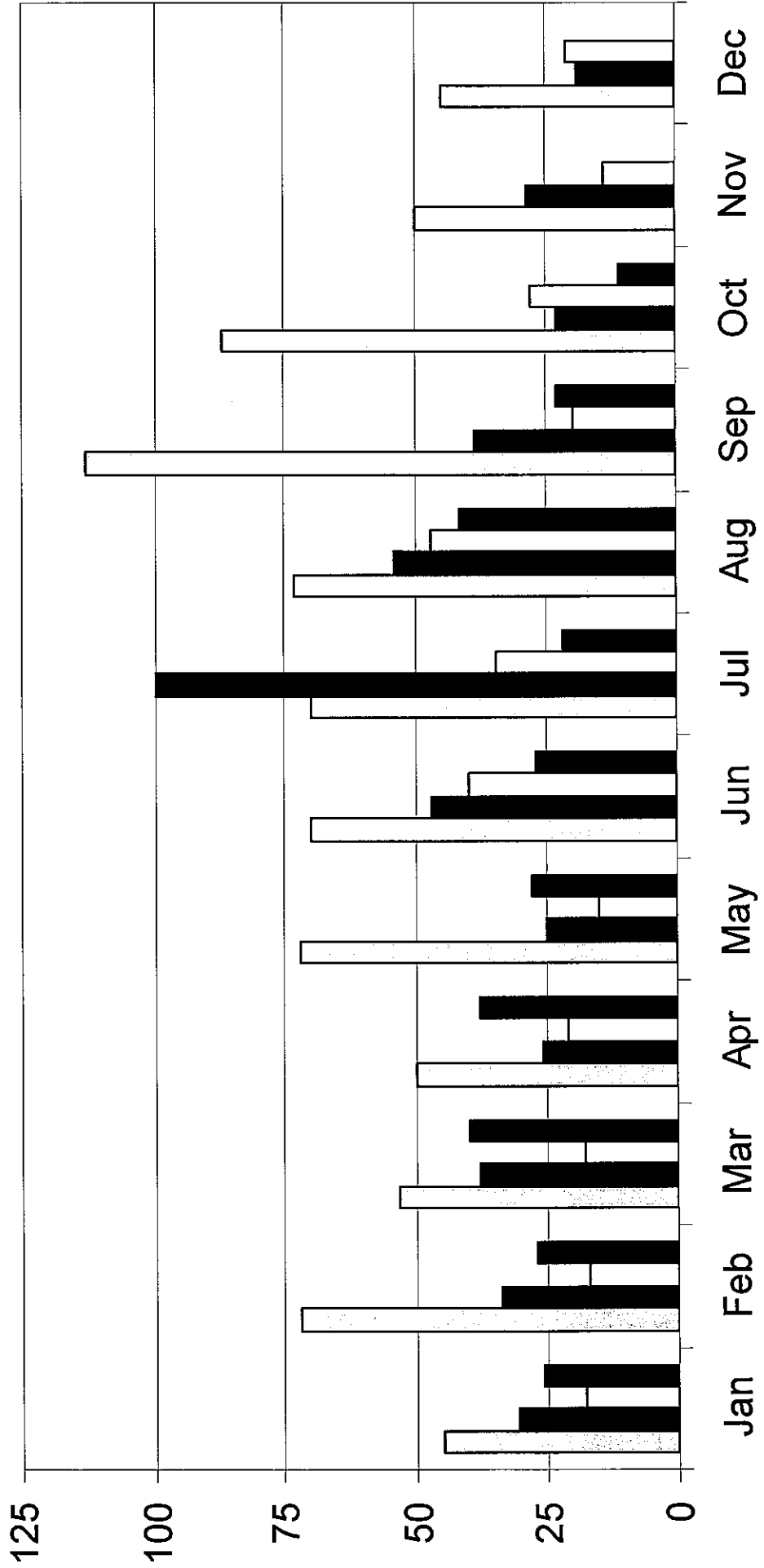
**Aircraft Noise Complaint Distribution By Neighborhood
San Diego International Airport
Summary of Aircraft Noise Complaints - 2008**

NEIGHBORHOOD	JAN	FEB	MAR	APR	MAY	JUN	JUL	AUG	SEP	OCT	NOV	DEC	TOTAL
Bay Park													0
Bonita													0
Chollas Creek													0
Chula Vista	1												1
Clairemont													0
County of S.D.						1							1
Coronado													0
Del Cerro													0
Downtown S.D.				1	1	1							3
El Cajon													0
Encanto/Lomita			1							2			3
Famosa	1	3	6			1	3	3	1	1			19
Golden Hill		2	2		1	4	2						11
Hillcrest													0
La Jolla					1	1							2
Lakeside													0
La Mesa													0
Lemon Grove									1				1
Liberty Station		1				1							2
Loma Portal	6	1	6	8	7	3	7	11	9	2			60
Middletown					4		1	1					6
Midway													0
Mission Beach		2		1									3
Mission Hills													0
Mount Hope													0
Mountain View			1	3									4
Normal Heights		1											1
North Park		1				1							2
Ocean Beach	2	3	7	7	4	4	4	10	3	1			45
Pacific Beach	5	4		1		5		3	4	1			23
Paradise Hills	1												1
Point Loma	8	9	17	17	8	5	4	14	5	4			91
South Park													0
Spring Valley													0
Talmadge													0
University City													0
University Heights													0
Uptown	2				2		1						5
TOTAL	26	27	40	38	28	27	22	42	23	11	0	0	284

Monthly Aircraft Noise Complaints



2005 – October 2008



Annual Aircraft Noise Complaints



SAN DIEGO
INTERNATIONAL
AIRPORT

2005 – 2008 (October)

□ 2005 ■ 2006 □ 2007 ■ 2008

