

# SAN DIEGO COUNTY REGIONAL AIRPORT AUTHORITY

P.O. BOX 82776, SAN DIEGO, CA 92138-2776  
619.400.2400 WWW.SAN.ORG

**Date:** November 3, 2008

**To:** Distribution

**Subject:** Aircraft Noise Complaint Report – September 2008

---

A copy of the noise complaints received by Airport Noise Mitigation at San Diego International Airport for the month of September 2008 is submitted for your information. This report is required as a condition of the Airport Noise Variance and is submitted to local and state agencies.

This report includes:

- Aircraft Noise Complaint Log
- Aircraft Noise Complaint Callers' Location Map
- Aircraft Noise Complaint Distribution by Neighborhood
- Aircraft Noise Complaint Distribution by Household
- Aircraft Noise Complaint Distribution by Time of Day
- Aircraft Noise Complaint Distribution by Aircraft Type
- Aircraft Noise Complaint Distribution by Cause

Comparative Charts:

- Year-to-Date Aircraft Noise Complaint Statistics by Neighborhood
- Monthly Aircraft Noise Complaints (2005 – September 2008)
- Annual Aircraft Noise Complaints (2005 – September 2008)

Threats against aircraft are taken seriously and will be reported to the appropriate federal law enforcement agency. Complaints containing profanity or insinuation of threat to Airport Authority or affiliated staff will not be included in this log.



Dan Frazee  
Director, Airport Noise Mitigation

Enclosures

DF/rja



SAN DIEGO  
INTERNATIONAL  
AIRPORT

Aircraft Noise Complaint Report  
November 3, 2008  
Page Two

Distribution:

Patricia Delgado, Aeromexico  
Greg Trinkaus, Airborne Express  
Irwin Adams, Air Tran Airlines  
Danny Flores, Alaska Airlines  
Lynn Silva, America West Airlines/US Airways  
Tina Moman, American Airlines  
Steve Terry, American Eagle  
John Dickman, BAX Global  
Jean Buggs, Continental Airlines  
Jeff Rasor, Delta Air Lines  
Jim Roberts, Express Jet  
Bobbie Schlindler, Federal Express  
Catrice Miller, Frontier Airlines  
Janet Nix, Hawaiian Airlines  
Karla Caroland, Independence Air  
Brian Towle, Jet Blue Airways  
Nick Hollinger, Midwest Airlines  
Jose Antunez, Northwest Airlines  
Roy Gourley, SkyWest Airlines  
Cheryl Black, Southwest Airlines  
Darwin Schussler, Sun Country  
Al Turner, United Airlines  
Randy Churchward, United Parcel Service  
Tim Kennell, UPS-Supply Change Solution  
Jane Clare, WestJet Airways  
Sean Mahoney, United States Coast Guard  
Linda Adams, SOCAL TRACON  
Jeff Tittle, Air Traffic Manager, Lindbergh Tower  
Betsy Eskridge, Division of Aeronautics (CalTrans)  
Airport Noise Advisory Committee



## Airport Noise Mitigation Aircraft Noise Complaint Log September 2008

Event Date & Time, Neighborhood, City, State, Zip Code	Comments	Resolution Comments
9/02/2008 @ 0715L Ocean Beach San Diego, CA, 92107	Hi, I'm calling about two separate dates, August 30th, and the following times of 6:48 a.m., 7:01, 7:06, 7:10, 7:16, 7:18, 7:23, 7:25, and 7:32 a.m., there were aircraft going right overhead, loud, very loud, each of those times. Then on September 2nd, again the same issue, at 6:56 a.m., 6:58, 6:59, 7:01, 7:04, and 7:15 a.m. These are all in the morning. I thought these takeoffs were being fanned out over the coast, rather than just focused for a given period of time over one area. This is really a terrible racket, and a disturbance. Again, all these times are in the morning. Thank you, I look forward to hearing from somebody.	Caller was informed of Air Traffic Control procedures and that the aircraft followed all prescribed departure procedures.
9/03/2008 @ 0600L Lemon Grove Lemon Grove, CA, 91945	Hi, I don't know if this is the right department, but the person answering the phone transferred me to you. I want to call to complain about a plane that flew over my house, which is in here in Lemon Grove, which is obviously out of the regular flight plan, and the fact that it was really, really, really low on Wednesday morning at 6:00 a.m. in the morning. And I can give you more details when you call.	Caller was informed of Air Traffic Control procedures and that the aircraft followed all prescribed procedures.
9/04/2008 @ 0539L Loma Portal San Diego, CA, 92106	I'd like to register a noise complaint, I was woken up at 5:39 a.m. on the morning of Thursday, September 4th, by a jet departure out of San Diego, to the west. Thank you, bye.	Caller did not request a call back. The aircraft was a missed approach on Runway 27. Arrivals are permitted twenty-four hours a day.



9/04/2008 @ 0545L  
Loma Portal  
San Diego, CA, 92106

Good morning, today is Thursday, September 4th, and I wish to put a complaint in regarding a large commercial planes, I presume commercial, went directly over the head of my house at 5:45 a.m. this morning. I would like to have a return call. In addition to this morning's call, over the last few months there have been an awful lot of Southwestern planes, and a couple of others, throughout the day, early afternoon, late afternoon, that have been coming a lot closer than they used to, and I wondered if there was a reason for this. Well, I'm sure there is a reason for it, but it just seems so incredible that so many planes are coming so far south now. I live in Loma Portal, and it's very, very nerve racking. Thank you very much, and I would appreciate a call back, thank you, bye.

Caller was informed that the aircraft were missed approaches on Runway 27. Arrivals are permitted twenty-four hours a day.

9/06/2008 @ 0410L  
Loma Portal  
San Diego, CA, 92106

This morning at 4:10 a.m., and it's been happening I believe every morning, 4:10 to 4:15 a.m. every morning, a plane goes very low and very loud, and I don't think that should be the case. We've only been living here about a month, but I believe those are off hours for airplanes, and wanted to make sure that you know that we're not happy about it. thank you.

Explained that the operation was an arrival on Runway 09; caller was informed of the Airport Use Regulations, Time of Day Restrictions, and that arrivals are permitted twenty-four hours a day.

9/06/2008 @ 0750L  
Ocean Beach  
San Diego, CA, 92107

Yeah, I don't want my name or number published, I work in air traffic, and I know it will publicized otherwise. I live right under the flight path in Ocean Beach, and by God you guys, I counted 18 aircraft in a row, and that was just while I was awake, it's 7:50 a.m. now. I've been awake since like 6:30 a.m. It's one right after the other, if it was 18 a half hour apart even, no complaint. And it's every day, I realize it's a holiday, but the holiday is well over, and I'm getting real tired of it. I thought you guys were cooling down a bit because of the price of fuel, it hasn't happened. What is this, a joke? Is this just a scheme? Like I said, I'm in air freight and I don't want my information out there or anything. This is just ridiculous, it's just outrageous. It wouldn't be so bad, like I say, if it was fifteen minutes apart even, but it's one right after the other. Noise Matters, I get this in the mail, apparently it doesn't matter to you.

Caller did not request a call back.



9/09/2008 @ 0430L  
Point Loma  
San Diego, CA, 92107

This past Tuesday, September 9th, at about 4:30 a.m., a flight came in and woke everybody in the house up, about 4:30 a.m. on September 9th. My wife said she thought it was an incoming flight, I didn't see it, but I heard it. Anyway, yeah, let me know if you can investigate this, and just tell me what the Airport Authority does about it, to penalize the people who are making those flights, or ensure that they're not doing it again. Thanks, bye.

Explained that the operation was a landing on Runway 09; caller was informed of the Airport Use Regulations, Time of Day Restrictions, and that arrivals are permitted twenty-four hours a day.

9/10/2008 @ 0444L  
Ocean Beach  
San Diego, CA, 92107

It's September 5th, at 4:44 a.m., and I'm calling to make a complaint about a plane going over, right this moment, 4:44 a.m., September 10th.

Caller was informed that the operation was an arrival on Runway 09. Arrivals are permitted twenty-four hours a day.

9/12/2008 @ 0640L  
Point Loma  
San Diego, CA, 92107

Hi, good morning, I want to call about, this morning between about 6:15 to 6:30, towards 6:40 a.m., the planes are taking off and coming way over the Point, and I'm assuming it's because of the fog, perhaps, the low lying clouds, but they're way out of the funnel path. And I don't really need a call back, thank you.

Caller did not request a call back. The aircraft flew the prescribed runway heading departure.

9/13/2008 @ 2203L  
Pacific Beach  
San Diego, CA, 92109

Hi, it's September 13th, Saturday evening, and at 10:03 p.m. they sent another jet, which they have not done in a while, I must congratulate them on that. But they sent another jet low over Mt. Soledad, headed east towards Julian, and it was low, and so loud, and so whiny, that it drowned out my T.V. So, you know, it's one thing when they're way up, but it's another thing when they're that low. So, you know, report it, put it in the books, I'm complaining. Thank you, bye.

Caller did not request a call back. The aircraft followed all prescribed departure procedures.

9/14/2008 @ 1727L  
Loma Portal  
San Diego, CA, 92106

Yes, at about 5:27 p.m. this evening, Sunday, September 14th, a United Airlines plane came over much closer than it normally would to our house. It didn't go directly over the house, but it certainly went directly over the houses of people one block away. In any case, it was very close, and not the usual route for it. I would appreciate a call back, thank you, good bye.

Caller lives one-half mile south of the runway centerline. Caller was informed that the aircraft flew the prescribed runway heading departure.

9/15/2008 @ 0611L  
Loma Portal  
San Diego, CA, 92106

I want to know why a plane took off over our house before 6:15 this morning, at around 6:11 a.m., when they're not supposed to take off until 6:30 a.m. Please give me a call back.

Caller was informed of the Airport Use Regulations, Time of Day Restrictions, and the operation was a Life-Flight departure exempt from the Curfew.



9/15/2008 @ 0612L  
Loma Portal  
San Diego, CA, 92106

Good morning, I'd like to register a noise complaint, I was woken up at 6:12 a.m., Monday, September 15th, again at 6:12 a.m. And that was a jet departure during curfew hours, thank you, bye.

Caller was informed of the Airport Use Regulations, Time of Day Restrictions, and the operation was a Life-Flight departure exempt from the Curfew.

9/15/2008 @ 0645L  
Loma Portal  
San Diego, CA, 92106

Hello, I think the airport airplanes are violating their take times, it's just unbelievable. It's about 6:45 a.m. on September 15th, and we've already had five planes go out starting at about 6:30 a.m. So, I'd like to understand what the timeframes are, and why they're not abiding by that. If you ever try to live over here you cannot sleep in past 6:30 a.m. And this week they've been taking off, I've heard a couple at 2:20 in the morning, 2:30 a.m., I'm woke up regularly at 4:00 a.m., and it's just unbearable. So, I'd like to know how I discuss this with somebody that can make a difference. Or to make sure that the airplanes are notified that they are bothering people if they are going outside their time sequence. Please call me back, I'd really appreciate somebody returning my call. Okay, this is the first time I've called, and I know that other people have called in the past, but, if there is a guideline that these planes are supposed to go by, I'd like to know what it is. Okay, thank you so much, bye-bye.

Caller was informed of the Airport Use Regulations, Time of Day Restrictions, and that aircraft followed all prescribed procedures.

9/16/2008 @ 0435L  
Point Loma  
San Diego, CA, 92107

Hi, I would like to be contacted to know why there were four flights on Tuesday morning, September 16th, between 4:10 a.m. and about 4:40 a.m. flying over Pt. Loma area. You know, it's 70 degrees at night, people are sleeping with their windows open, and you're waking up thousands of people having flights come in at 4:30, 4:00 in the morning. I know at least two of the flights were inbound, the one at 4:10 and 4:35, and then there were two more within about 10 minutes of 4:35 a.m., and I did not see them, but I did hear them. Please let me know why these flights are coming in, and what the airport's going to do to prohibit that. Thanks, bye.

Explained that the operations were landings on Runway 09; caller was informed of the Airport Use Regulations, Time of Day Restrictions, and that arrivals are permitted twenty-four hours a day.



9/16/2008 @ 0820L  
Loma Portal  
San Diego, CA, 92106

Hello, I'm right in the path of the airplanes, I definitely would like to have someone to return my call. I left a call yesterday of the same subject, I'm waiting again today. I'd like to know what the curfews are for the flights leaving San Diego. I'd like to know how these airplanes are penalized when they violate the curfew, and recently they have been taking off, some at two, some at four, at least thirteen flights between 6:30 and 7:00 a.m. Now, it's my understanding that flights don't leave San Diego until 7:00 a.m., if that's the case, we have some issues to deal with. There's a lot of people that are not getting their sleep and I'm not just one of them. There's a lot of people that are upset over this violation, and it just keep going. It's like they just don't care about the people that live under this pathway. But, I would hope somebody would return my call, ASAP.

Explained that the operations were landings on Runway 09; caller was informed of the Airport Use Regulations, Time of Day Restrictions, and that arrivals are permitted twenty-four hours a day.

9/17/2008 @ 2309L  
Pacific Beach  
San Diego, CA, 92109

Hi, it's September 17th, and at 11:09 p.m., and also probably at about 10:58, within ten minutes of each other, someone sent two jets headed east on the south side of Mount Soledad, very tight turns, instead of heading north over the top of Mount Soledad, they turn them really tightly to the east. So, I'm calling to complain. I swear it's the same dispatcher that's doing it. I think there's only one that does it, and when they're on duty they sends all the jets over this house. So, thank you, bye.

Caller did not request a call back. The aircraft followed all prescribed procedures.

9/21/2008 @ 0645L  
Point Loma  
San Diego, CA, 92107

Good morning, just now a large silver plane went over, and I'm in my front yard, and it's the same as standing in Loma Portal. I mean, this is way out of the track. The approximate time is, my clock is off, but it's about 6:45 or something like that. Off course they're leaving like every two and three minutes now, so I don't know if you can tell which plane it is or not. I've been there to your meeting, and I really appreciate all that you do, but there's so many flights that don't follow the, what used to be, the funnel that they're supposed to stay in. Anyway, thank you very much, bye.

Caller did not request a call back. Caller lives one mile south of the runway centerline. The aircraft flew the prescribed runway heading departure.

9/22/2008 @ 2338L  
Famosa  
San Diego, CA, 92107

Please let me know why a plane departed after allowed hours. It flew over my house at 11:38 p.m. Telephone you can reach me at is on file, thank you.

Explained that the operation was a landing on Runway 09; caller was informed of the Airport Use Regulations, Time of Day Restrictions, and that arrivals are permitted twenty-four hours a day.



9/25/2008 @ 0008L  
Pacific Beach  
San Diego, CA, 92109

Hi, it is now September 25th and at 12:08 a.m., somebody sent, what sounds like an airliner, out over, headed east over Mount Soledad, and I would think if it were an emergency organ transplant type flight, they'd be using a private jet. So, I'm assuming it's an airliner, and it's after curfew, so I just wanted you folks to be aware that I'm aware of it. Thank you, bye.

Caller did not request a call back. The aircraft was an arrival on Runway 09. Arrivals are permitted twenty-four hours a day.

9/26/2008 @ 0533L  
Point Loma  
San Diego, CA, 92106

Today is Friday, September 26th, I want to report that this morning at 4:15 a.m. a plane flew over, at 4:47 a plane flew over, at 5:02, 5:25, and 5:33. According to your website, there's to be no planes overhead between 11:30 at night and 6:30 in the morning. This is happening more and more frequently, and it's really awful. Even with the Quieter Home Program, it doesn't seem to matter when the plane seems to be 100 feet above your roof. Please do not call us back. I'll give you our phone number, but it's not necessary to call us back, I just hope that you are enforcing the penalties with these planes. Alrighty, thank you very much.

Explained that the operations were landings on Runway 09; caller was informed of the Airport Use Regulations, Time of Day Restrictions, and that arrivals are permitted twenty-four hours a day.

9/30/2008 @ 0500L  
Loma Portal  
San Diego, CA, 92106

I have a complaint from early this morning, between four o'clock and five o'clock there were 4 aircraft landed, they were FedEx and UPS aircraft landing at the time with excessive noise from the reverse thrusters. They woke me up three times and that's unacceptable. I know they're allowed to land at night, but to wake up the whole side of Point Loma, and with that excessive noise in the morning is not acceptable, and it's got to stop. And if it's not going to stop, I'm going to start a petition here in Point Loma to get the airport shut down at night, because of these heavy aircraft coming in and creating such noise at that hour of the morning. It's totally unacceptable! Thank you, bye.

Explained that the operations were landings on Runway 27; caller was informed of the Airport Use Regulations, Time of Day Restrictions, and that arrivals are permitted twenty-four hours a day.



9/30/2008 @ 2354L  
Pacific Beach  
San Diego, CA, 92109

Hi, it's September 30th, and at 11:54 p.m. a jet flew over climbing in a weird location, I must say. Either it was out of Tijuana and it was still low, or it took off out of Lindbergh with a really tight turn and it headed due north, like up over La Jolla and Torrey Pines, instead of turning. I've never seen a plane in this location before. I don't know what it was, where it was going, but if it came out of Lindbergh, it's after the curfew. Anyway, I don't know what this was, it just took off and went over loud, and it could have been a private plane, it was loud and it was fast. But anyway, I thought I 'd inform you that it went over, headed north, at 11:54 p.m., thank you, bye.

Caller did not request a call back. The aircraft was a departure from Brown Field.



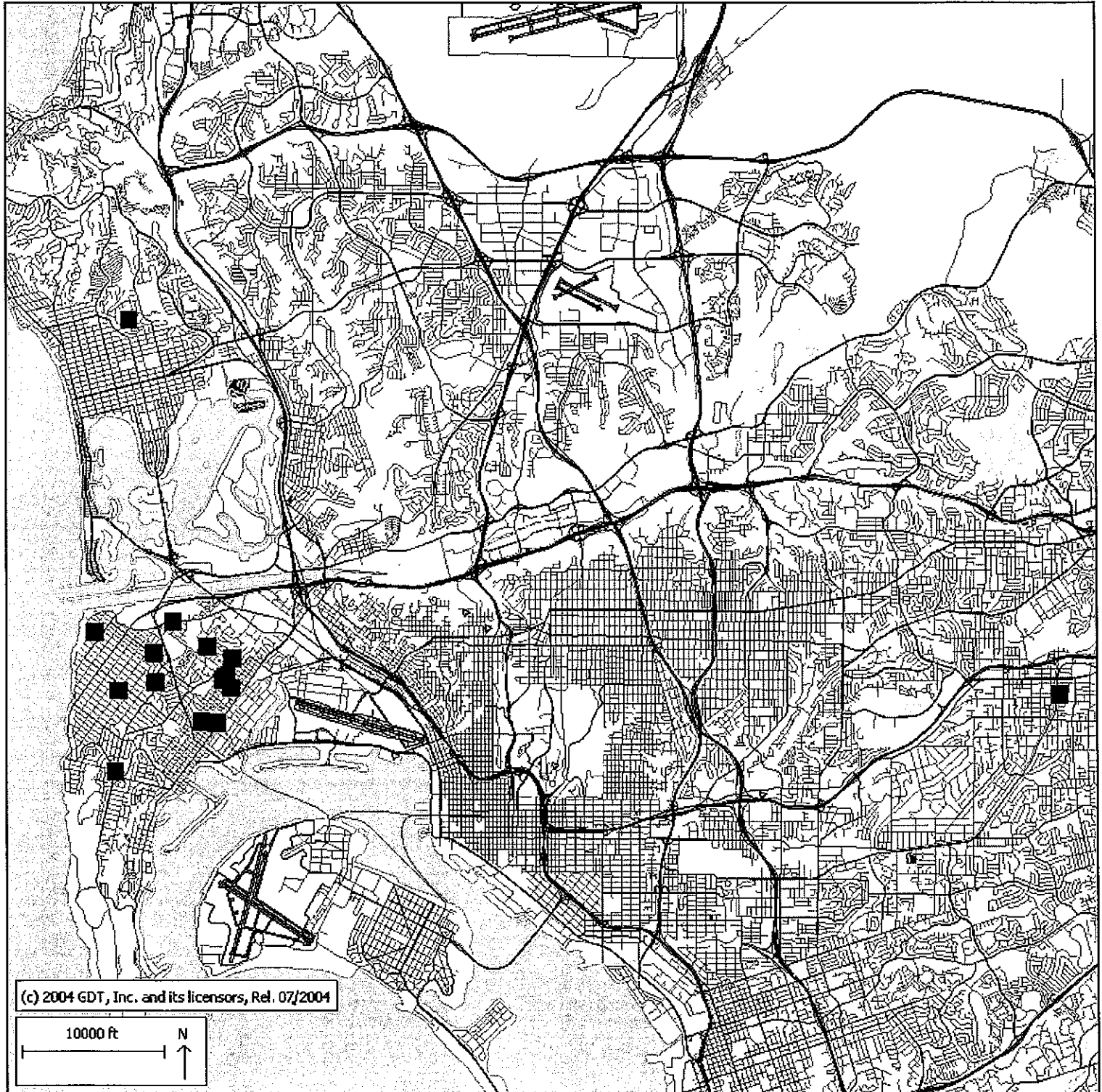


# September 2008

Aircraft Noise Complaint Caller's Location in relation to  
San Diego International Airport (SDIA)  
15 Households; 23 Complaints



SAN DIEGO  
INTERNATIONAL  
AIRPORT



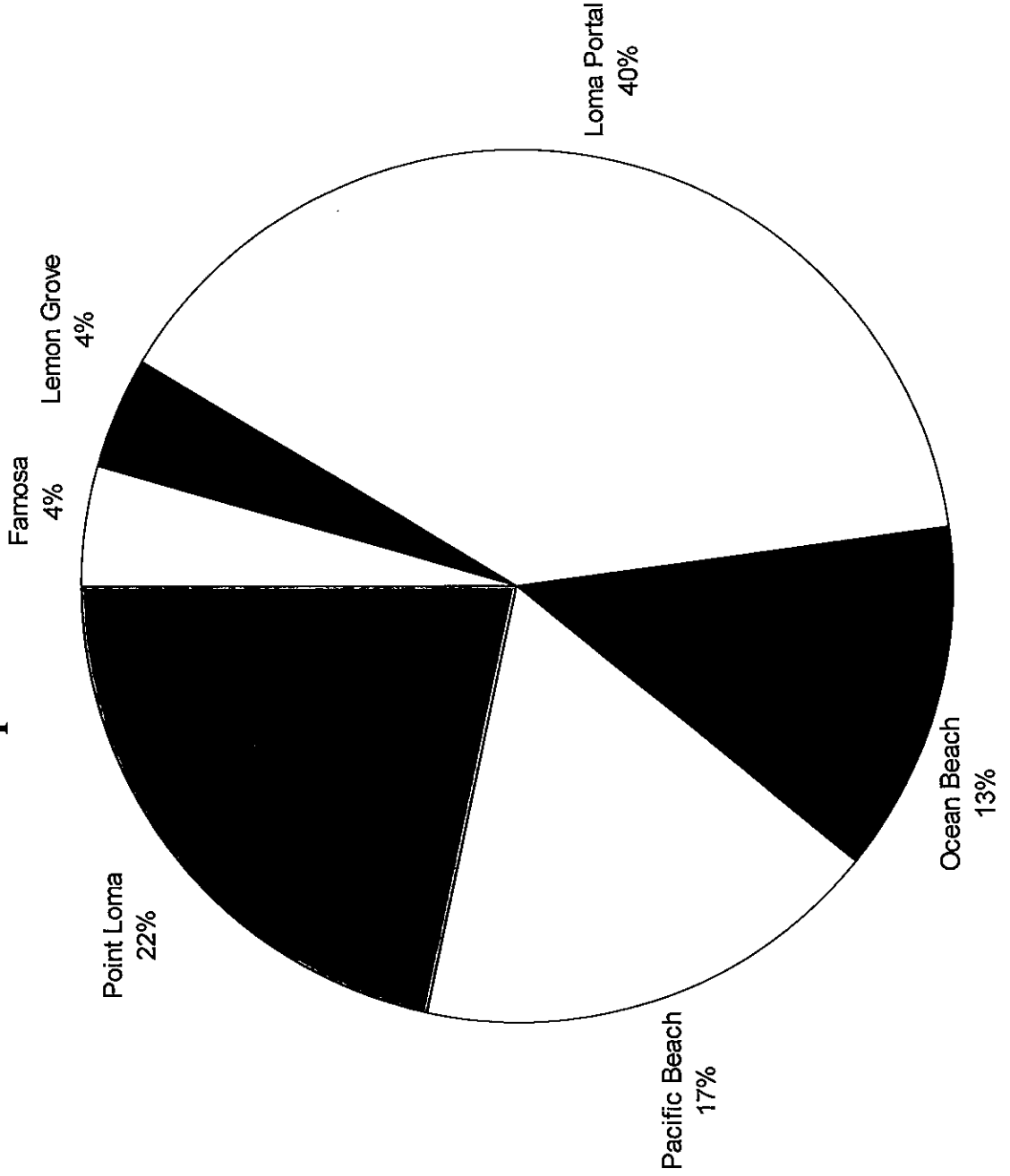
# Aircraft Noise Complaint Distribution by Neighborhood



SAN DIEGO  
INTERNATIONAL  
AIRPORT

September 2008

TOTAL CALLS: 23



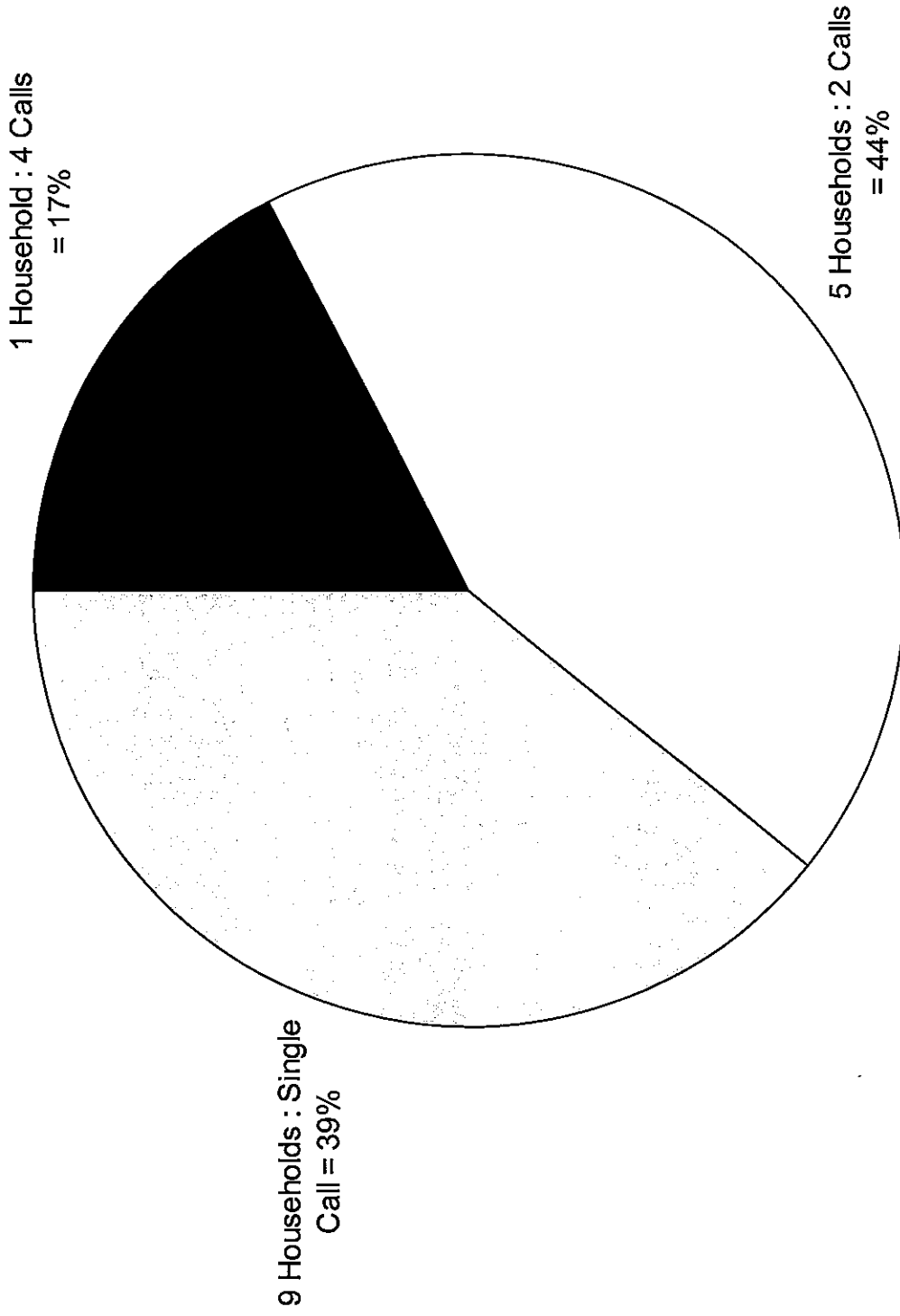
# Aircraft Noise Complaint Distribution by Household



SAN DIEGO  
INTERNATIONAL  
AIRPORT

September 2008

TOTAL CALLS: 23



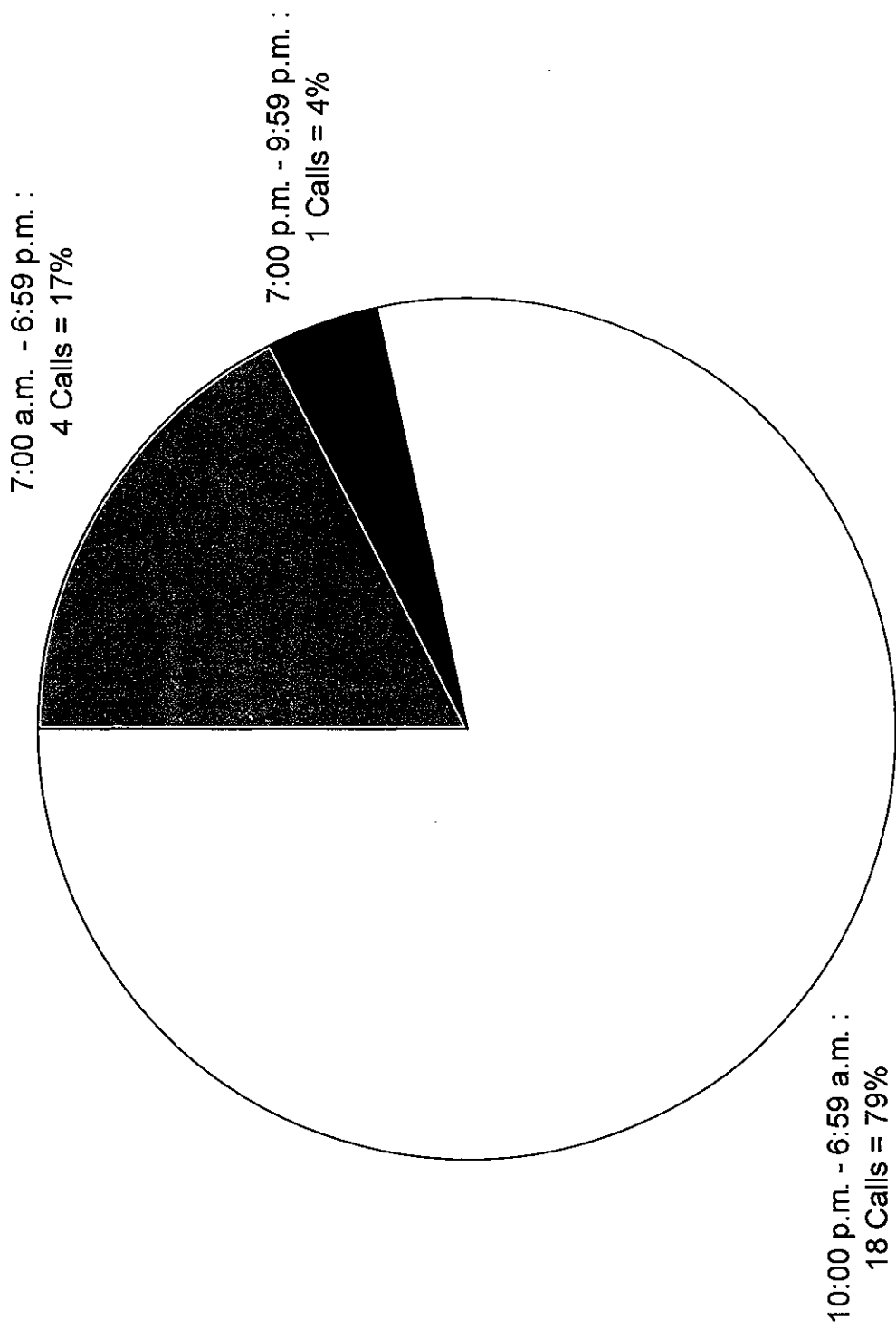
# Aircraft Noise Complaint Distribution by Time of Day



SAN DIEGO  
INTERNATIONAL  
AIRPORT

September 2008

TOTAL CALLS: 23



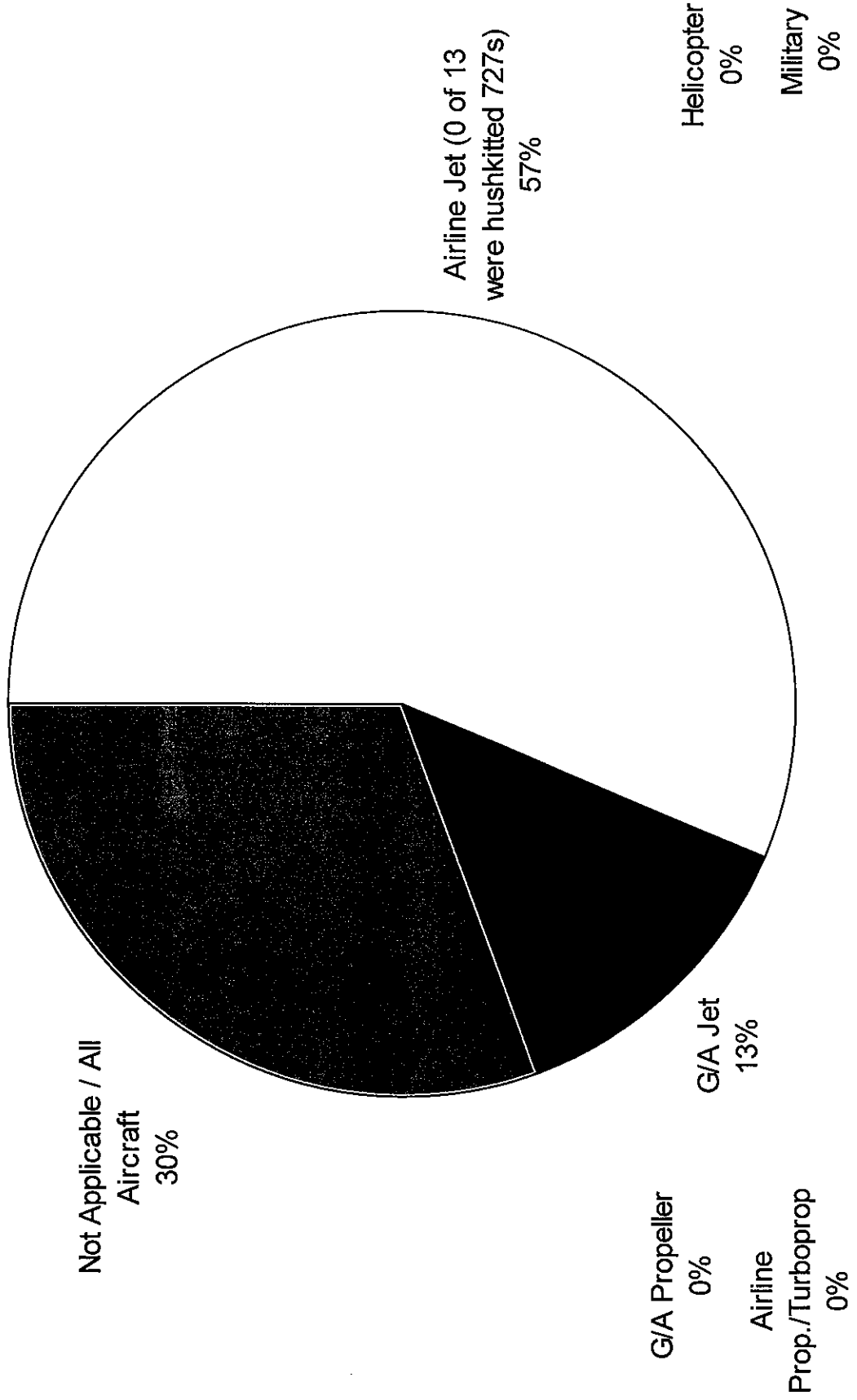
# Aircraft Noise Complaint Distribution by Aircraft Type



SAN DIEGO  
INTERNATIONAL  
AIRPORT

September 2008

TOTAL CALLS: 23



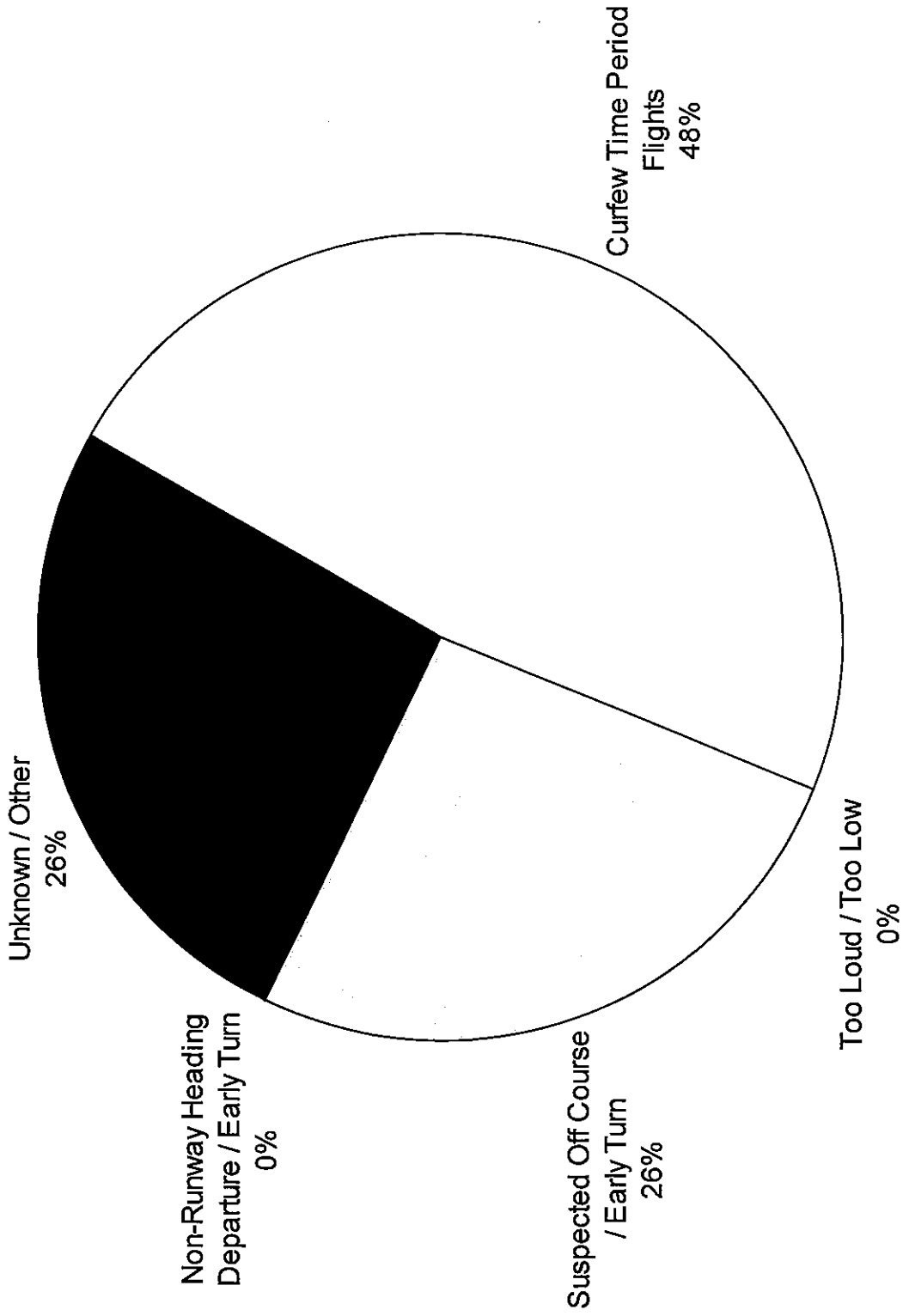
# Aircraft Noise Complaint Distribution by Cause



SAN DIEGO  
INTERNATIONAL  
AIRPORT

September 2008

TOTAL CALLS: 23



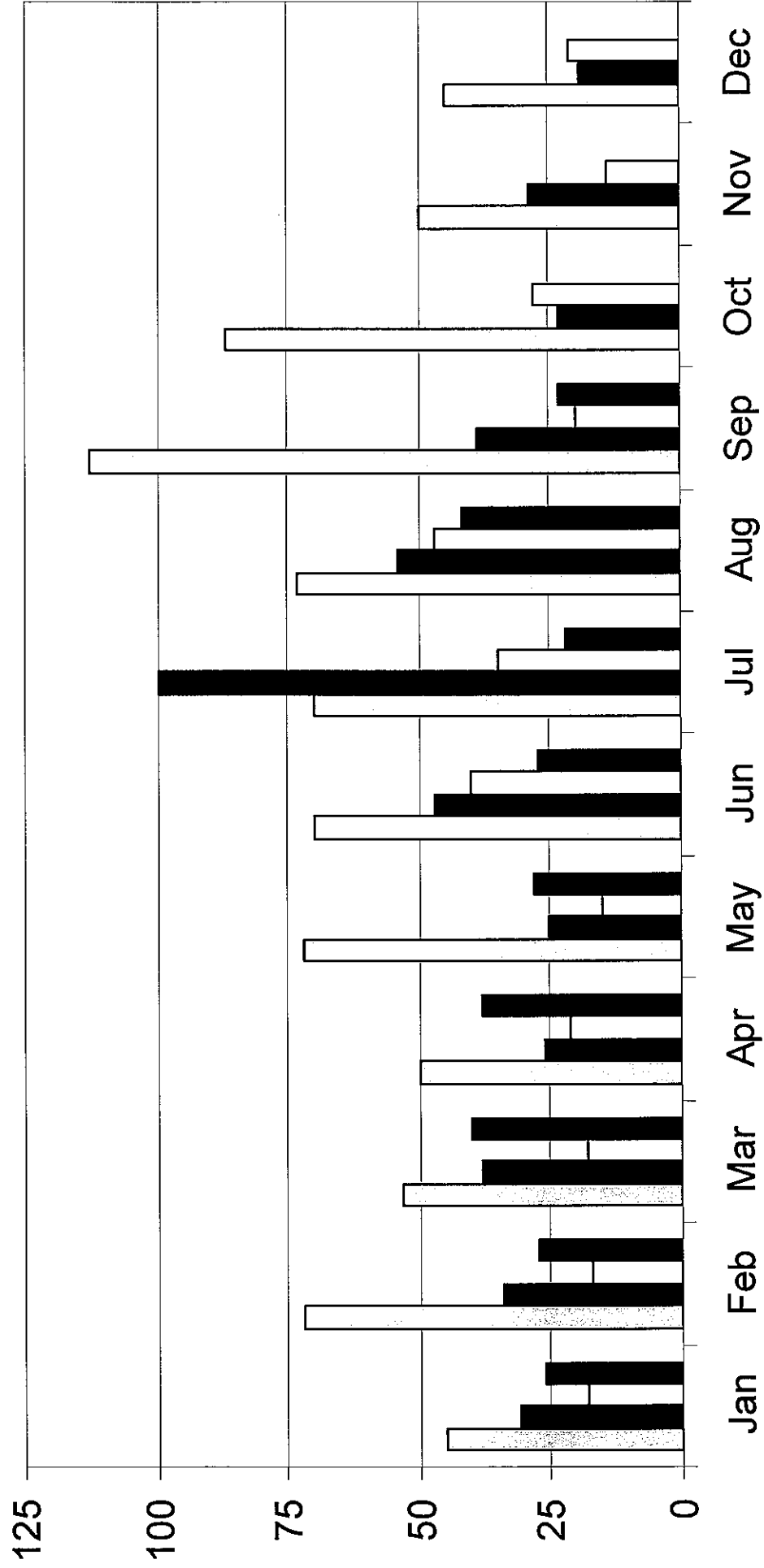
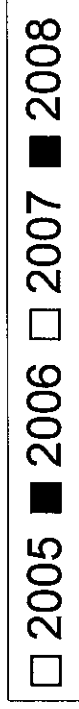
**Aircraft Noise Complaint Distribution By Neighborhood  
San Diego International Airport  
Summary of Aircraft Noise Complaints - 2008**

NEIGHBORHOOD	JAN	FEB	MAR	APR	MAY	JUN	JUL	AUG	SEP	OCT	NOV	DEC	TOTAL
Bay Park													0
Bonita													0
Chollas Creek													0
Chula Vista	1												1
Clairemont													0
County of S.D.						1							1
Coronado													0
Del Cerro													0
Downtown S.D.				1	1	1							3
El Cajon													0
Encanto/Lomita			1										1
Famosa	1	3	6			1	3	3	1				18
Golden Hill		2	2		1	4	2						11
Hillcrest													0
La Jolla					1	1							2
Lakeside													0
La Mesa													0
Lemon Grove									1				1
Liberty Station		1				1							2
Loma Portal	6	1	6	8	7	3	7	11	9				58
Middletown					4		1	1					6
Midway													0
Mission Beach		2		1									3
Mission Hills													0
Mount Hope													0
Mountain View			1	3									4
Normal Heights		1											1
North Park		1				1							2
Ocean Beach	2	3	7	7	4	4	4	10	3				44
Pacific Beach	5	4		1		5		3	4				22
Paradise Hills	1												1
Point Loma	8	9	17	17	8	5	4	14	5				87
South Park													0
Spring Valley													0
Talmadge													0
University City													0
University Heights													0
Uptown	2				2		1						5
<b>TOTAL</b>	<b>26</b>	<b>27</b>	<b>40</b>	<b>38</b>	<b>28</b>	<b>27</b>	<b>22</b>	<b>42</b>	<b>23</b>	<b>0</b>	<b>0</b>	<b>0</b>	<b>273</b>

# Monthly Aircraft Noise Complaints



2005 – September 2008



# Annual Aircraft Noise Complaints



SAN DIEGO  
INTERNATIONAL  
AIRPORT

2005 – 2008 (September)

