

SAN DIEGO COUNTY REGIONAL AIRPORT AUTHORITY

P.O. BOX 82776, SAN DIEGO, CA 92138-2776
619.400.2400 WWW.SAN.ORG

Date: August 14, 2008
To: Distribution
Subject: Aircraft Noise Complaint Report – June 2008

A copy of the noise complaints received by Airport Noise Mitigation at San Diego International Airport for the month of June 2008 is submitted for your information. This report is required as a condition of the Airport Noise Variance and is submitted to local and state agencies.

This report includes:

- Aircraft Noise Complaint Log
- Aircraft Noise Complaint Callers' Location Map
- Aircraft Noise Complaint Distribution by Neighborhood
- Aircraft Noise Complaint Distribution by Household
- Aircraft Noise Complaint Distribution by Time of Day
- Aircraft Noise Complaint Distribution by Aircraft Type
- Aircraft Noise Complaint Distribution by Cause

Comparative Charts:

- Year-to-Date Aircraft Noise Complaint Statistics by Neighborhood
- Monthly Aircraft Noise Complaints (2005 – June 2008)
- Annual Aircraft Noise Complaints (2005 – June 2008)

Threats against aircraft are taken seriously and will be reported to the appropriate federal law enforcement agency. Complaints containing profanity or insinuation of threat to Airport Authority or affiliated staff will not be included in this log.


Dan Frazee
Director, Airport Noise Mitigation

Enclosures

DF/rja



SAN DIEGO
INTERNATIONAL
AIRPORT

Aircraft Noise Complaint Report
August 14, 2008
Page Two

Distribution:

Patricia Delgado, Aeromexico
Greg Trinkaus, Airborne Express
Irwin Adams, Air Tran Airlines
Danny Flores, Alaska Airlines
Lynn Silva, America West Airlines/US Airways
Tina Moman, American Airlines
Steve Terry, American Eagle
John Dickman, BAX Global
Thomas Yourke, Continental Airlines
Jeff Rasor, Delta Air Lines
Jim Roberts, Express Jet
Bobbie Schlindler, Federal Express
Catrice Miller, Frontier Airlines
Janet Nix, Hawaiian Airlines
Karla Caroland, Independence Air
Brian Towle, Jet Blue Airways
Nick Hollinger, Midwest Airlines
Jose Antunez, Northwest Airlines
Roy Gourley, SkyWest Airlines
Cheryl Black, Southwest Airlines
Darwin Schussler, Sun Country
Al Turner, United Airlines
Randy Churchward, United Parcel Service
Tim Kennell, UPS-Supply Change Solution
Jane Clare, WestJet Airways
Sean Mahoney, United States Coast Guard
Linda Adams, SOCAL TRACON
Jeff Tittle, Air Traffic Manager, Lindbergh Tower
Betsy Eskridge, Division of Aeronautics (CalTrans)
Airport Noise Advisory Committee



Airport Noise Mitigation Aircraft Noise Complaint Log June 2008

Event Date & Time Neighborhood City, State Zip Code	Comments	Resolution Comments
6/01/2008 @ 2217L Golden Hill San Diego, CA 92102	My complaint is for tonight, Sunday, June 1st, at ten o'clock, there's just a steady stream of planes passing over. Some of them are less than two minutes apart. I'm just complaining about the general, just steady stream of traffic just after 10:00 p.m. I mean right now it's 10:17 p.m. and they've been just steadily coming over. Thank you, I'd like a call back.	Caller was informed of Air Traffic Control procedures and that the aircraft followed all prescribed arrival procedures.
6/01/2008 @ 2319L Pacific Beach San Diego, CA 92109	It's June 1st and at 11:19 p.m. a jet flew over, climbing out, seemed lower than normal. I haven't called in a while, because nobody has sent a plane over here, and I thought maybe they took that person, the controller at departure control, they changed the shifts. Obviously as of June 1st he's back on the same shift pulling the same stuff, which is sending jets over. If you follow the track on your computer screens, you'll see that I am looking at it, and it is to my south. It is definitely south of me and flying on the southern edge of Kate Sessions Park. So, that is one tight turn out of the airport to be that far south and not be going over the top of Mount Soledad. So, I don't like it, tell them to stop it. It was nice and peaceful for the past few months. Now the peace and quiet of the summer is ruined, now that I'm opening my windows. They're even more intense, so I hope this is the only one that happens, but then again, they may send another one off before 11:30 p.m. tonight. Whomever the jerk is that's working down there that's doing this, I bet if you research this, there's only one person who's doing this, because there was such a space where they weren't happening, and it wasn't due to weather. So anyway, tell them to stop, or I'll be calling a lot more, thank you.	Caller did not request a call back. The aircraft followed all prescribed departure procedures.



6/05/2008 @ 2137L
North Park
San Diego, CA 92104

Why did what looked like an MD-80, cut over North Park and Morley field making a sharp turn coming in from the north, last night at around 9:37 p.m.? It looked unusually low and reckless. I would greatly appreciate any information you could provide me as a resident of the North Park area. Thank you in advance.

Caller was informed of Air Traffic Control procedures and that the aircraft followed all prescribed missed approach procedures.

6/09/2008 @ 1805L
Loma Portal
San Diego, CA 92106

I'm calling to complain about an airplane that was off its regular takeoff plan and it came over the house at 6:05 this evening, Monday, June 9th. I would appreciate a call. It did not correct before it came over this way further south than they normally do. I don't know whether it's 225 or 275 that they, the pattern's between that I know, but I don't know whether this area of Point Loma is 275 or 225, but anyway it was out of its regular takeoff pattern. I would appreciate a call, thank you very much, bye-bye now.

Caller lives one-half mile south of the runway centerline. Caller was informed that the aircraft, a hushkitted B727, flew the prescribed runway heading departure.

6/10/2008 @ 0900L
Pacific Beach
San Diego, CA 92109

It's June 10th and 9:00 a.m., someone sent a jet over here heading east directly, from what I could tell in the clouds, sounded like it was pretty much directly over my house, usually to the south of me. The ones north of me don't bother me so much, but this one was pretty much directly over my house. So, someone's changing or the person that was on the late shift is now on the morning shift. I keep thinking there's only one person that's doing this, because it's just, after 26 years this just isn't done. Some bozo down there is jerking things around, ticks me off. So anyway, I'm filing an official complaint. Don't do that, take them out over the ocean, bye.

Caller did not request a call back. The aircraft followed all prescribed departure procedures.

6/10/2008 @ 1810L
Ocean Beach
San Diego, CA 92107

It's the first time I've called, as usual the 6:10 p.m. flight out of Lindbergh Field goes over like a bat out of hell, so I could call any weekday at 6:10 to report this, I'm pretty sure. But please do call me back, I just want to make sure that this flight, which always flies out of Lindbergh Field around 6:10, and always makes the most noise of any plane, is fined, or whatever, reported. Thank you.

Caller was informed that the aircraft, a hushkitted B727, followed all prescribed procedures.



6/10/2008 @ 2231L
Golden Hill
San Diego, CA 92102

I've been a resident of Golden Hill for the past four years. It seems like recently, within the last 6 months or so, that the flight path has moved more south. Have there been recent changes? It also seems like the volume of traffic for flights has increased and the noise levels are getting worse. I'm noticing that flights are continuing well past 11:30 at night and they are constantly running very early in the morning. Please let me know what is going on, thank you.

Caller was informed of Air Traffic Control procedures and that no changes have been made to the flight paths.

6/12/2008 @ 1804L
Ocean Beach Heights
San Diego, CA 92107

The nature of my complaint is an extraordinarily noisy aircraft flying out at about 6:04 p.m. on Thursday, June 12th, and it set off car alarms it was extraordinarily loud. I'm not sure if you can track the time to the flight, but that was just absolutely uncalled for. I would like someone to return my call. Thank you so much, bye.

Caller was informed of Air Traffic Control procedures and that the aircraft, a hushkitted B727, followed all prescribed procedures.

6/15/2008 @ 0900L
Golden Hill
San Diego, CA 92102

I'm calling about the jets taking off over the city. It's a beautiful blue sky out there and I have a view of downtown and the water, and it's a little bit hazy. I was wondering if you could turn those babies around so we can have a nice Sunday. I don't need anybody to call me back, I just need action, please. Talk to you later. If you want to call me, you got my number, bye.

Caller did not request a call back. The operations, departures on Runway 09, followed all prescribed procedures.

6/15/2008 @ 1320L
Famosa
San Diego, CA 92107

Sunday, Father's Day, at 1:20 p.m., the plane that just went over, I mean, could it get any louder? I mean this is getting ridiculous. I'm so glad that the price of airline tickets are going up and people aren't flying, it's wonderful.

Caller did not request a call back. The aircraft, a Stage 3 MD80, followed all prescribed procedures.

6/15/2008 @ 1831L
Point Loma
San Diego, CA 92106

Just had some heavy metal go right over the house, it's about 6:31 p.m. on Sunday. I do want a phone call, I can be reached at my office. Thanks, bye.

Explained that the operation was a non-runway heading missed approach on Runway 27.



6/16/2008 @ 1020L
County of S.D.
Santee, CA 92071

Yes, I live in Santee, and what I'm complaining about is the constant jet noise, day and night, even worse at night, one after the other. Planes flying into Lindbergh Field, planes flying out of Lindbergh Field, they come right over Santee. We live in West Santee and, my neighbors are complaining, and somebody needs to do something about this. This is not a flight pattern over our town. We need something done about the jets out of Lindbergh Field going over and coming in. Like I say, especially in the evenings, every five minutes there's a jet, either coming or going, right over Santee. And it's getting worse in the daytime as well. If you'll call me back and at least leave me a message if we're out, and please do take this to the City Council or whatever you would need to do because this is getting really bad with these constant jets, day and night, day and night. Thank you.

Caller was informed of the FAA Air Traffic Control procedures. Referred the caller to the FAA.

6/16/2008 @ 1802L
Ocean Beach
San Diego, CA 92107

Yes, I would like the noise control people to call me to let me know that they did get this message. The time of the flight that just came over, very low and loud, was 6:02 pm on June 16th. I think you have everything else. I would like a reply on this, that was obnoxious. Thank you.

Caller was informed that the aircraft, a hushkitted B727, followed all prescribed procedures.

6/17/2008 @ 0640L
Loma Portal
San Diego, CA 92106

Yeah, it's 6:40 a.m. on Tuesday morning, June 17th. How come the planes are taking off 20 minutes early today? Did you guys move the times up for them to take off today? At the west end of the runway again, boy, you guys are taking off earlier and earlier every day now. 6:40 a.m., we just had two of them take off back to back. All right, bye.

Caller was informed of the Airport Use Regulations, Time of Day Restrictions, and that the aircraft followed all prescribed procedures. The Curfew ends at 6:30 a.m.

6/17/2008 @ 1406L
Point Loma Heights
San Diego, CA 92107

This call is being made at 2:10 p.m. on June 17th. A couple of minutes ago, at about 2:06 p.m., a plane went over my house and so much racket that things in my house were rattling. Thank you.

Caller did not request a call back. The aircraft, a Stage 3 MD80, flew the prescribed runway heading departure.



6/17/2008 @ 2338L
Pacific Beach
San Diego, CA 92109

Hi, on June 17th at 11:38 p.m. a plane just looked like it was going in for approach to Lindbergh Field, and I thought it was after curfew. The planes that usually come down the coast are much higher, and they're usually more to the northeast of me, they're more like over Clairemont, over Costco, they're over in that direction. This one is directly over my house, so someone's breaking curfew. Too low, they should be higher, not the normal pattern, so slow, low, loud descent. Thank you, bye.

Caller did not request a call back. Arrivals are permitted twenty-four hours a day.

6/19/2008 @ 0733L
Point Loma
San Diego, CA 92106

Good morning, it's Thursday, July 19th, I live on the south end of Point Loma, and we usually have one, or possibly two, early morning drones over this area, but this morning there have been three. The last one was at about 7:33 a.m. It's unusual to have that many, and I'm wondering why so many are being permitted. So, I do wish to register this complaint, and be glad to have a call back, thank you.

Caller was informed of Air Traffic Control procedures and that the aircraft, Cessna C208 turbo-props, non-runway heading departures, followed all prescribed procedures.

6/20/2008 @ 0410L
Ocean Beach
San Diego, CA 92107

Hi, I wanted to complain about two different planes that took off in the wee hours of the morning, Friday morning. One was at 2:00 a.m., and one was at 4:10 a.m. Both of them woke me up from a restful sleep, and I'm kind of curious as to why those two flights took off when they did. So, please give me a call back, thank you very much.

Caller was informed that the operations were a missed approach and arrivals on Runway 09. Arrivals are permitted twenty-four hours a day.

6/22/2008 @ 1808L
Loma Portal Heights
San Diego, CA 92106

Hi, at approximately 6:08 p.m. we had a Boeing aircraft that was way too low over our house. Several people saw it, and we had company in our backyard. I just wanted to report that, thank you, bye.

Caller did not request a call back. The aircraft, a Stage 3 hushkitted DC9, followed all prescribed procedures.

6/23/2008 @ 0700L
La Jolla
San Diego, CA 92037

Yes, it is Monday, June 23rd, at about 7:00 a.m. and there's been a string of jets taking off from Lindbergh Field that are turning and going straight over the roof of my house in La Jolla. Doesn't seem to be any unusual weather situation or problems right now, but it looks like there's something going on where the eastbound flights are all being turned north and then east over the top of La Jolla, instead of looping around Point Loma. I'd appreciate a phone call with information, thank you.

Caller was informed of Air Traffic Control procedures and that the operations, departures on Runway 27, were maintaining proper separation from Runway 09 arrivals.



6/23/2008 @ 0739L
Golden Hill
San Diego, CA 92102

It's 7:39 a.m. on Monday, June 23rd, I would like to know why the planes are taking off to the east, and why so much full power is needed for that. The noise is outrageous in Golden Hill. Thank you.

Caller was informed of Air Traffic Control procedures and that the operations, departures on Runway 09, followed all prescribed procedures.

6/23/2008 @ 1340L
Loma Portal Heights
San Diego, CA 92106

I just want to talk about the planes going over my house, I have a question. Also about my Sprint, I bought a Sprint wireless setup for my computer and won't work every time a plane goes over. So, I have that and also the jets going over my house today. Thank you, bye.

Caller was informed of Air Traffic Control procedures and that that aircraft followed all prescribed departure procedures.

6/23/2008 @ 2329L
Pacific Beach
San Diego, CA 92109

Hi, it's Monday, June 23rd, and at 11:29 p.m. a very low-flying commercial jet flew over the house. I just heard another one take off, so that one just barely made the deadline. Anyway, just voicing my complaint, it was peaceful and quiet until I heard this low-flying roar of a jet heading northeast-ish. Anyway, just filing a complaint again. Like I said before, it hasn't happened too much lately, but every once in a while one comes through. Not as frequently as before, but I'm still very aware when they do it if I'm in my house, I am not outside. Thank you, bye.

Caller did not request a call back. The aircraft followed all prescribed departure procedures.

6/23/2008 @ 2330L
Downtown S.D
San Diego, CA 92101

I sent you an email a couple days ago, it's about the noise from the airport. I see that there's a problem with planes, they fly during the night. We are listening to planes fly right now, and at two, three, four o'clock during the night. It's something very annoying, because the section where I'm at looks like they go very close to our building. So, I sent an email two days ago with additional details. I would like somebody to come over to our place and measure the decibels of the noise. I strongly believe it is over the 65 decibels that's reported as the maximum noise that you can support. So, it's possible actually to sleep with the planes going back and forth. It would be strongly appreciated that they can stop flying after 11 p.m. and not before 6 a.m. So, if you can please give me a call back, thank you.

Caller was informed of Air Traffic Control procedures and that arrivals are permitted twenty-four hours a day.



6/28/2008 @ 1405L
Point Loma
San Diego, CA 92107

I don't know if I have the right number that I had before for airplane noise complaints. Anyway, I live in Point Loma, on this past Saturday, June 28th, a plane took off and went over my house. I live in Point Loma outside the usual flight path. It was at about 2:05 p.m. on Saturday, and there were actually two planes, and I believe one was a Southwest flight. Again they flew right over the house. And I live down in Point Loma, thank you very much, bye.

Caller was informed of Air Traffic Control procedures and that the operation was a non-runway heading missed approach on Runway 27.

6/28/2008 @ 2233L
Pacific Beach
San Diego, CA 92109

Hi, it's June 28th and at 10:33 p.m. the departure control sent a plane out over my house going east, and I find that it usually happens on Saturdays and Sundays. It didn't happen for a long time, it's starting up again. Please tell them to stop, bye.

Caller did not request a call back. The aircraft followed all prescribed departure procedures.

6/30/2008 @ 0642L
Point Loma Heights
San Diego, CA 92107

It's Monday, June 30th, and at about 6:42 a.m. a plane came over the house, and I am well south of the flight pattern. And as it came over the house, I noticed it banked to the northwest. Please call and let me know why this occurred, thank you.

Caller was informed of Air Traffic Control procedures and that the operation was an "Early Turn" departure. The flight track will be sent to FAA for evaluation.



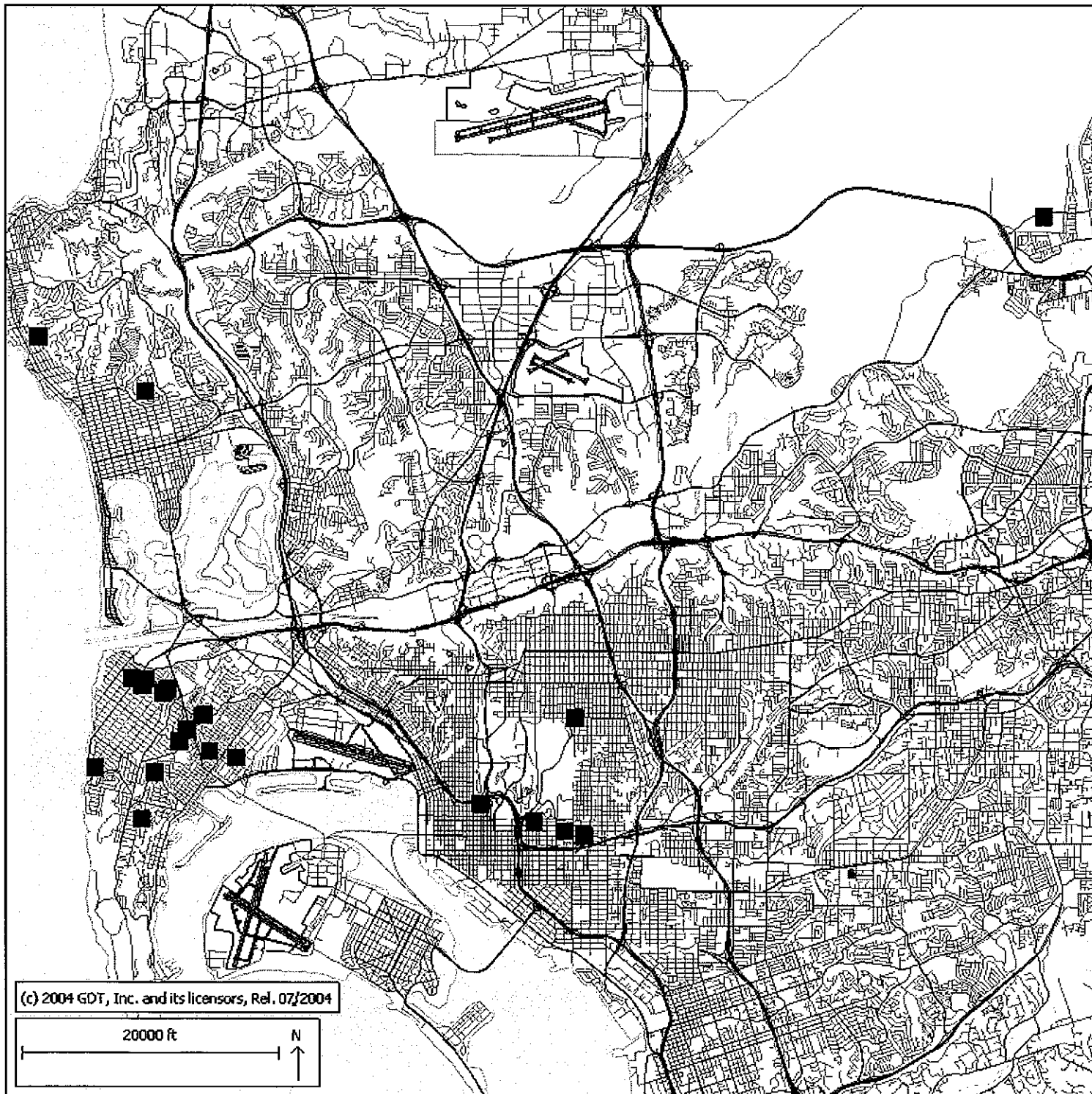


June 2008

Aircraft Noise Complaint Caller's Location in relation to
San Diego International Airport (SDIA)
22 Households; 27 Complaints



SAN DIEGO
INTERNATIONAL
AIRPORT



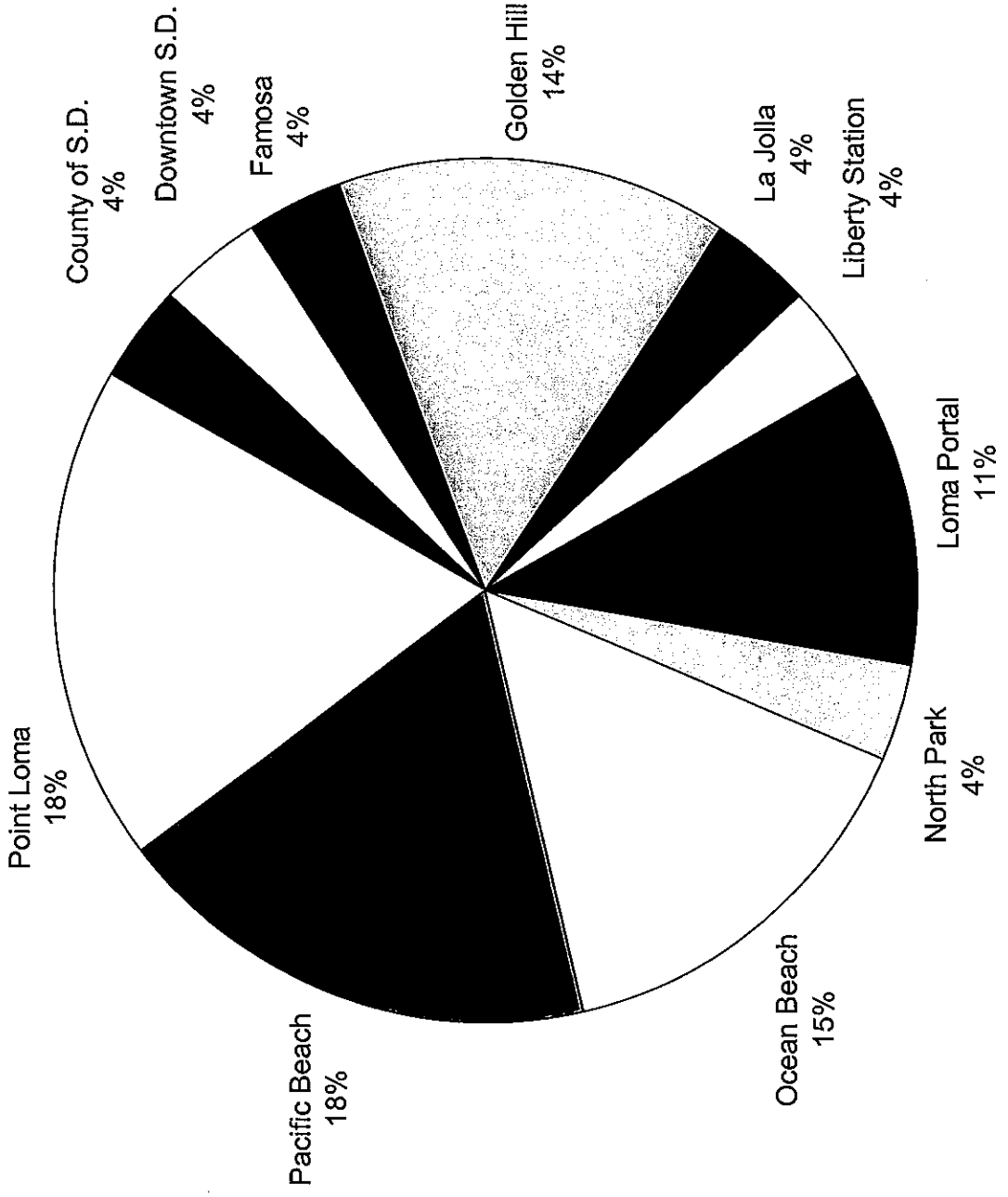
Aircraft Noise Complaint Distribution by Neighborhood



SAN DIEGO
INTERNATIONAL
AIRPORT

June 2008

TOTAL CALLS: 27



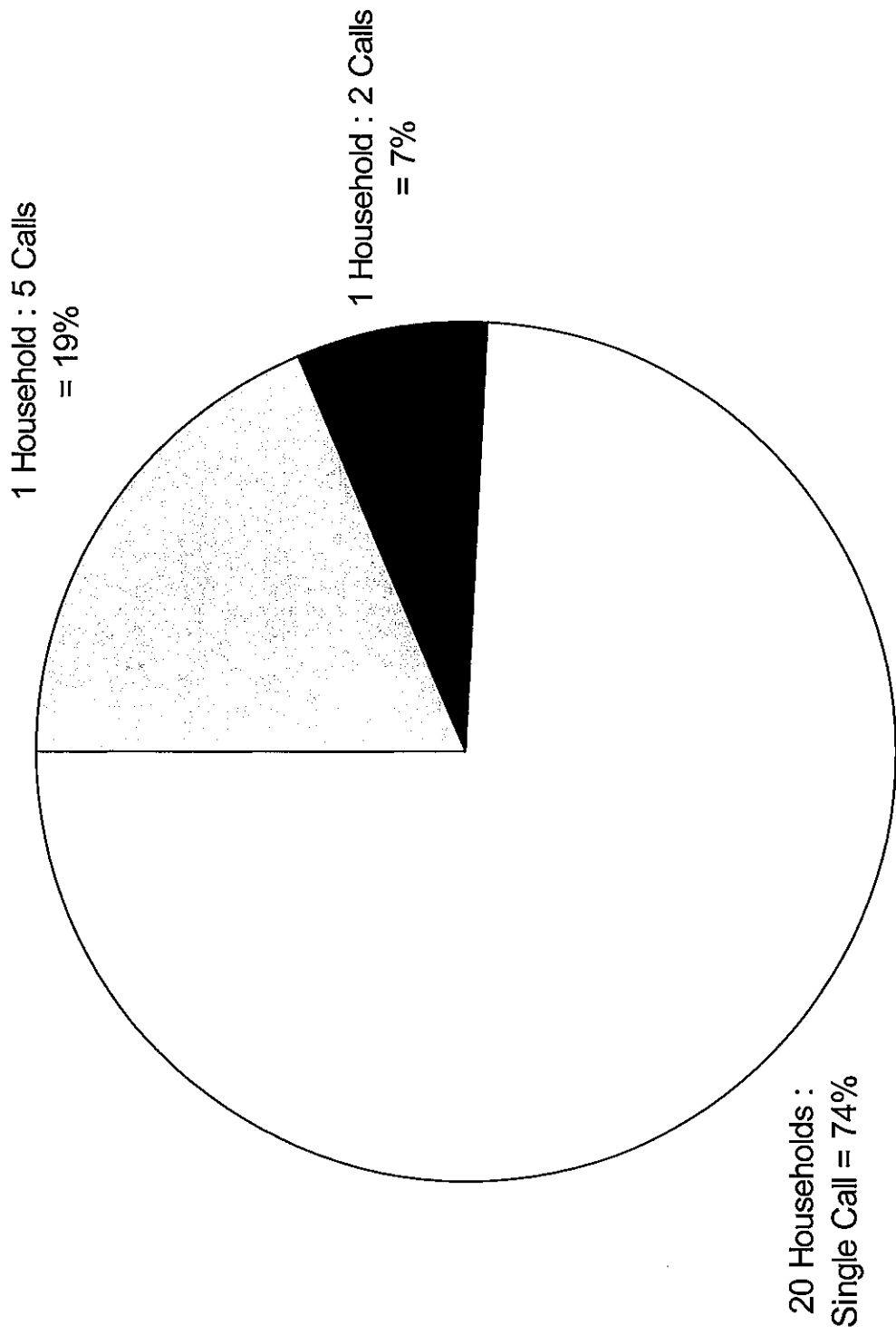
Aircraft Noise Complaint Distribution by Household



SAN DIEGO
INTERNATIONAL
AIRPORT

June 2008

TOTAL CALLS: 27



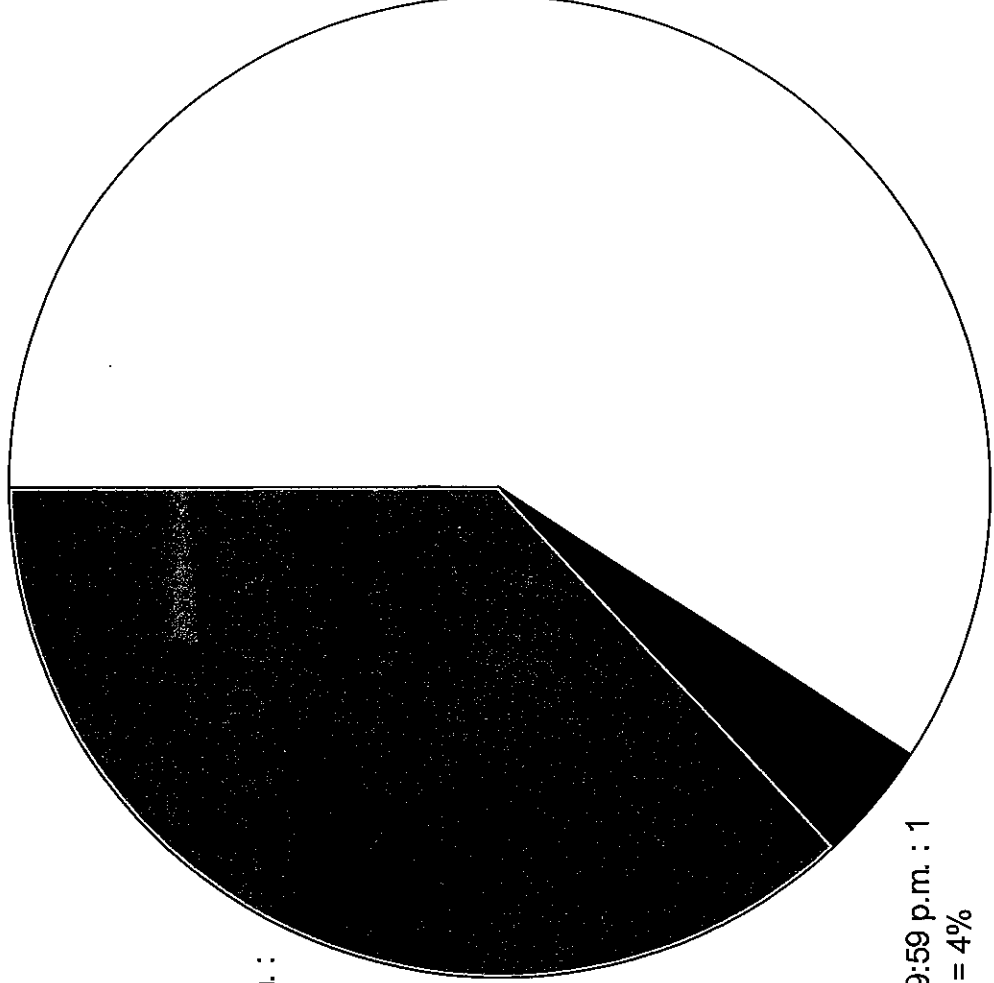
Aircraft Noise Complaint Distribution by Time of Day



SAN DIEGO
INTERNATIONAL
AIRPORT

June 2008

TOTAL CALLS: 27



10:00 p.m. - 6:59 a.m. :
10 Calls = 37%

7:00 p.m. - 9:59 p.m. : 1
Calls = 4%

7:00 a.m. - 6:59 p.m. :
16 Calls = 59%

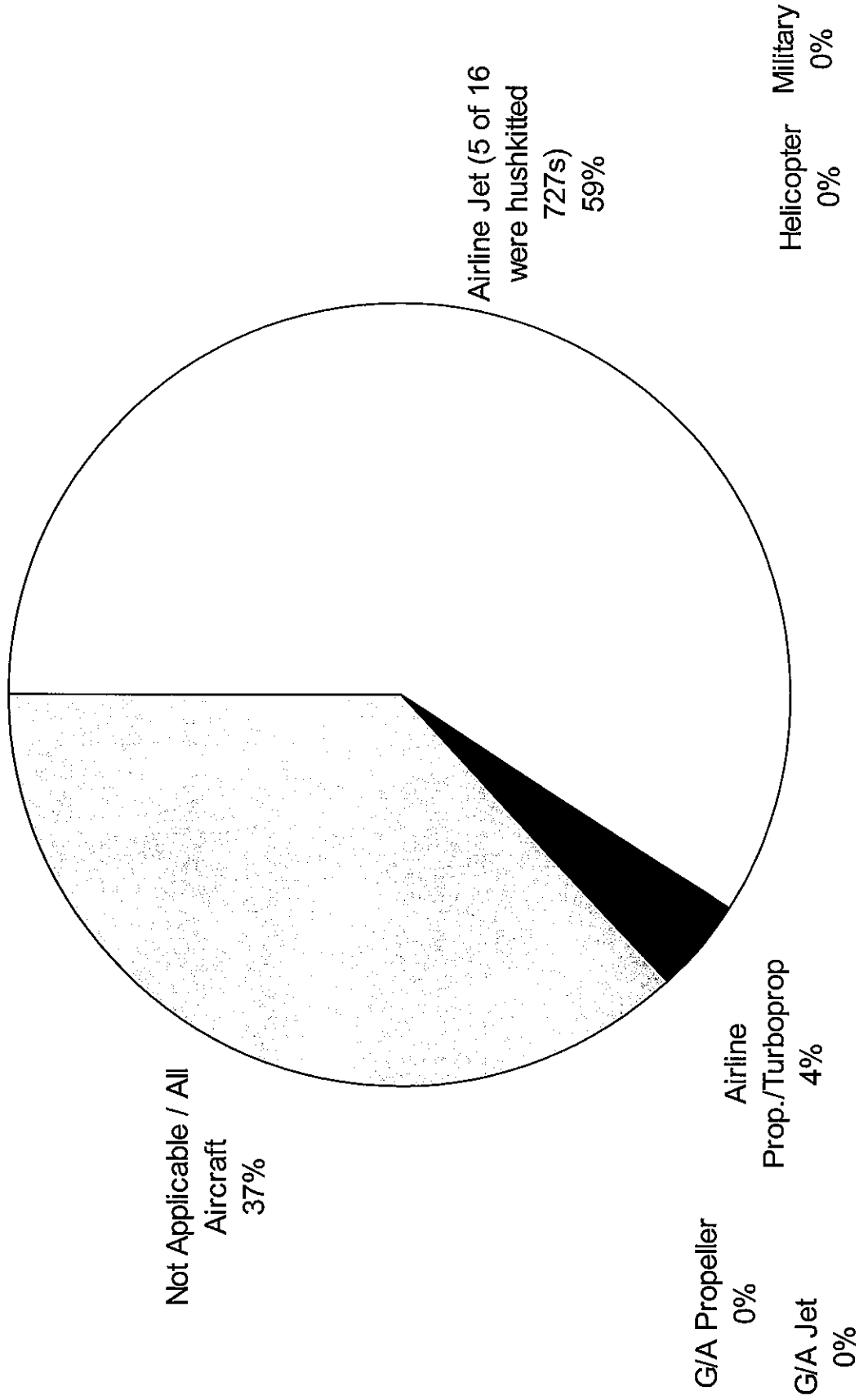
Aircraft Noise Complaint Distribution by Aircraft Type



SAN DIEGO
INTERNATIONAL
AIRPORT

June 2008

TOTAL CALLS: 27



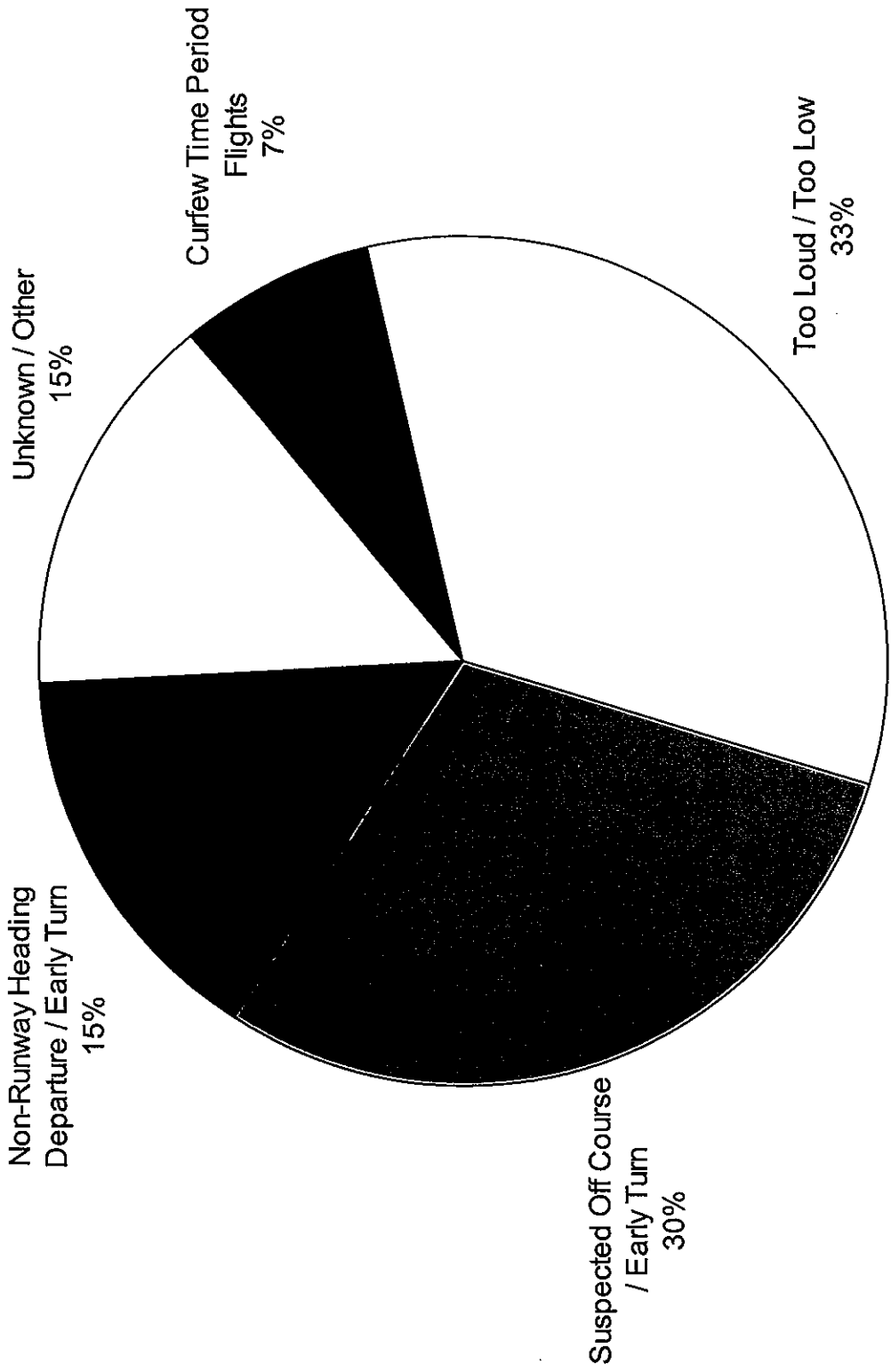
Aircraft Noise Complaint Distribution by Cause



SAN DIEGO
INTERNATIONAL
AIRPORT

June 2008

TOTAL CALLS: 27

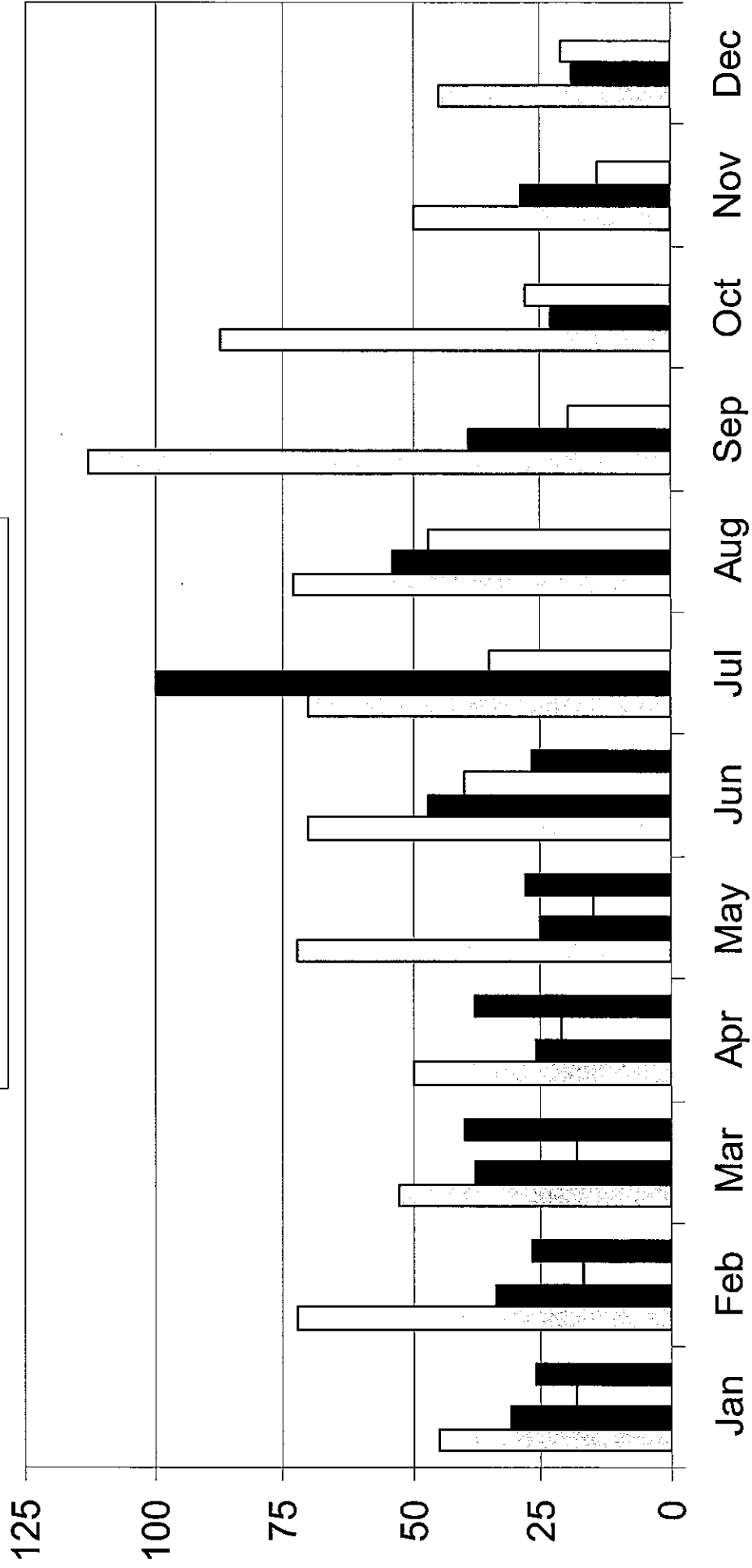
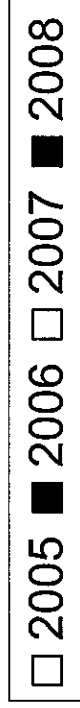


Monthly Aircraft Noise Complaints



SAN DIEGO
INTERNATIONAL
AIRPORT

2005 – June 2008



Annual Aircraft Noise Complaints



2005 – 2008 (June)

