

SAN DIEGO COUNTY REGIONAL AIRPORT AUTHORITY

P.O. BOX 82776, SAN DIEGO, CA 92138-2776
619.400.2400 WWW.SAN.ORG

Date: August 12, 2008
To: Distribution
Subject: Aircraft Noise Complaint Report – May 2008

A copy of the noise complaints received by Airport Noise Mitigation at San Diego International Airport for the month of May 2008 is submitted for your information. This report is required as a condition of the Airport Noise Variance and is submitted to local and state agencies.

This report includes:

- Aircraft Noise Complaint Log
- Aircraft Noise Complaint Callers' Location Map
- Aircraft Noise Complaint Distribution by Neighborhood
- Aircraft Noise Complaint Distribution by Household
- Aircraft Noise Complaint Distribution by Time of Day
- Aircraft Noise Complaint Distribution by Aircraft Type
- Aircraft Noise Complaint Distribution by Cause

Comparative Charts:

- Year-to-Date Aircraft Noise Complaint Statistics by Neighborhood
- Monthly Aircraft Noise Complaints (2005 – May 2008)
- Annual Aircraft Noise Complaints (2005 – May 2008)

Threats against aircraft are taken seriously and will be reported to the appropriate federal law enforcement agency. Complaints containing profanity or insinuation of threat to Airport Authority or affiliated staff will not be included in this log.



Dan Frazee
Director, Airport Noise Mitigation

Enclosures

DF/rja



SAN DIEGO
INTERNATIONAL
AIRPORT

Aircraft Noise Complaint Report
August 12, 2008
Page Two

Distribution:

Patricia Delgado, Aeromexico
Greg Trinkaus, Airborne Express
James Mayer, Air Tran Airlines
Danny Flores, Alaska Airlines
Lynn Silva, America West Airlines/US Airways
Tina Moman, American Airlines
Steve Terry, American Eagle
John Dickman, BAX Global
Thomas Yourke, Continental Airlines
Jeff Razor, Delta Air Lines
Jim Roberts, Express Jet
Bobbie Schlindler, Federal Express
Catrice Miller, Frontier Airlines
Janet Nix, Hawaiian Airlines
Karia Caroland, Independence Air
Brian Towle, Jet Blue Airways
Nick Hollinger, Midwest Airlines
Jose Antunez, Northwest Airlines
Roy Gourley, SkyWest Airlines
Cheryl Black, Southwest Airlines
Darwin Schussler, Sun Country
Al Turner, United Airlines
Randy Churchward, United Parcel Service
Tim Kennell, UPS-Supply Change Solution
Jane Clare, WestJet Airways
Sean Mahoney, United States Coast Guard
Linda Adams, SOCAL TRACON
Jeff Tittle, Air Traffic Manager, Lindbergh Tower
Betsy Eskridge, Division of Aeronautics (CalTrans)
Airport Noise Advisory Committee



Airport Noise Mitigation Aircraft Noise Complaint Log May 2008

**Event Date & Time,
Neighborhood
City, State Zip Code**

Comments

Resolution Comments

5/03/2008 @ 0120L
Point Loma
San Diego, CA 92106

Hi, you've heard from me before, once, and I go to the meetings, and I'm kind of curious about a lot of things. I go to some of the Point Loma stuff, the Point Loma planning commission. Anyway, last night, May 3rd, at about 1:20 a.m. I heard an airplane taking off so I got up and looked, I can see the airport cause I live on top of the hill in La Playa, I can look right down at the airport, I can see what's going on, as far as at night, who's taking off, and there was a plane taking off. I mean it wasn't something that was shattering, as far as noise, but it was still taking off at a time that was supposedly something that can be reported. So, I just thought that you ought to know. Let me know, and I found out that it is cheaper to pay the fine than to park and all that jazz. But I still want to know what that was, okay, thank you, bye.

Caller was informed of the Airport Use Regulations, Time of Day Restrictions, and that a curfew violation occurred. Explained the violation review procedures.

5/03/2008 @ 0124L
Loma Portal
San Diego, CA 92106

At 1:24 a.m. on Saturday, May 3rd, there was an aircraft, a very noisy one, that took off from San Diego International Airport in violation of the Curfew. I would like to have someone call me back to speak about this.

Caller was informed of the Airport Use Regulations, Time of Day Restrictions, and that a curfew violation occurred. Explained the violation review procedures.

5/04/2008 @ 0630L
Point Loma
San Diego, CA 92107

Hello, my husband wants to lodge a complaint. This morning he was woken up at 6:30 a.m., and there were a sequence of eight planes that flew over this area, and we would like to know why they are coming this far south. He is very upset, eight planes at 6:30 in the morning on May 4th, Sunday. Why are they coming so far south? We are not in the airplane area, we are not ever subject this kind of noise. Strangely enough, it is right after this vote to go ahead. Is this what the rest of the Peninsula can expect? Please call, thank you.

Caller lives one mile south of the runway centerline. Caller was informed that the aircraft flew the prescribed runway heading departure.



5/8/2008 @ 0400L
Ocean Beach Heights
San Diego, CA 92107

Hello, I heard an airplane, and saw an airplane, fly over my house at 4:00 a.m. this morning, May 8th. I don't want somebody to call me back, but I want these off hour flights to stop. Thank you.

Caller did not request a call back. Arrivals are permitted twenty-four hours a day.

5/08/2008 @ 0430L
Uptown
San Diego, CA 92101

I'm right in the flight path and I'm calling today, Thursday, May 8th, to complain about a plane that went overhead, over the building, at 4:30 this morning, and it also happened yesterday, May 7th, at 4:30 a.m. I understand that this is outside the time that the planes are supposed to be flying into the airport, so I was wanting to know if somebody could please call me back, and explain who is this that keeps violating this restriction. I just wanted to file this as a formal complaint, I don't know if this is going to happen tomorrow, since this has happened the past two days. Is this something that is going to be on going? What I mainly wanted to know is if it's going to continue for the rest of the week, rest of the month, or year, forever? Thanks, bye.

Explained that the operation was an arrival on Runway 27; caller was informed of the Airport Use Regulations, Time of Day Restrictions, and that arrivals are permitted twenty-four hours a day.

5/08/2008 @ 1420L
Point Loma
San Diego, CA 92107

Just seems like, instead of getting better, the noise is getting worse. We have a lot of planes coming in and would appreciate some attention to this. And I have some questions about the airport relocation, expansion, etc. Thank you.

Caller was provided with the requested information.



5/09/2008 @ 2100L
Point Loma
San Diego, CA 92107

Hi, at about nine o'clock, and then closer to 9:01, but nine o'clock especially, I thought I was being dive-bombed by a plane, it woke me up out of a sound sleep. And I've talked to you guys a lot and I'm starting to disbelieve you, in terms of what happens. And I know who pays your salary, aside from the Airport Authority, but I know who funds that, which is the airlines. And I'm just really getting tired of it, I don't buy Cynthia Conger's crap, but you know, between the two of you, I'm starting to lean toward her, and I don't want to do that, but I'm tired of the noise. I was up early this morning, left my house at four in the morning, got back, and went to early bed, and then just got woken up by what, it was almost like the Red Bull thing that I went to this weekend. It was a whole lot nosier than that. I don't know what you guys are picking up over there. I don't need a call back from you guys to placate me any more about what your Airport Authority is trying to do. So anyway, put it on public record.

Caller did not request a call back. The aircraft flew the prescribed runway heading departure.



5/11/2008 @ 0645L
Point Loma
San Diego, CA 92107

Hi, this is Sunday, May 11th, at about 6:45 a.m. and there have been just constant overflights, in the last 15 minutes, that extend way over here to Santa Barbara Avenue. I know you keep telling me that they are on course, but they're not. We never used to hear these flights coming so early in the morning this far over. You've either changed or enlarged your funnel that over, they're off track. I know there's a little bit of overcast this morning, but I don't think that should cause that, and if this is a harbinger of things to come, then you're going to have to do some real mitigation about this airport. I'm on the Peninsula Community Planning Board, and we're trying to forge a better relationship with all the airport staff, and all the planning, etc., and we need people to be telling us what the truth is about these pilots not staying in their flight path. The other thing they're doing is they make a quick turn once they get past Catalina and go south, and get all of Sunset Cliffs, and they never use to do that either. I understand that there's a gas shortage, they say a shortage, I don't think it's a shortage, I think they just use that to bump up the prices, but never the less, they're making real short turns out over the Pacific Ocean and coming back in. They could go the other way too. Yes, I want a call, and I want some more answers about that, because the other times I've called, you say, oh no they haven't changed, but I've been here over 15 years, and I can tell you that it's changed. Thank you.

Caller lives one and one-half miles south of the runway centerline. Caller was informed that the aircraft flew the prescribed runway heading departure.



5/11/2008 @ 0648L
Point Loma
San Diego, CA 92107

Hi, on May 11th, at about 6:48 a.m. this morning, I forgot to leave my phone number when I just called before, but there's another plane going over as we speak, and they're about two and a half to three minutes apart. They're way over, coming way west, and what they don't usually do. Now, one is leaving less than two minutes. I know, I can sit here, I have a view of downtown and the airport, and I see them. So, I also just got a report that was given to us by Airport Staff that indicated how many calls there have been made, and I see that people don't really complain about it. So, I think we need to start paying more attention to these flights that don't stay in the funnel that they're supposed to be in. And here's another one, I mean that's less than a minute apart. I just don't understand why there has to be so many flights leaving a minute to three minutes apart on Sunday morning. Come ten o'clock there's no flights going, so they could leave later in the day on Sunday. People don't go to work on Sunday, like flying to San Francisco to work, or even flying to New York, or whatever. Seems to me that there's some planning here that could be adjusted, and especially on Sunday morning. I mean other mornings maybe not quite so much, people are up anyway. But even so, there's a whole bunch of us that don't get up during the week. So, I would like some further information, perhaps I could get another flight plan thing. Thank you, bye.

Caller lives one and one-half miles south of the runway centerline. Caller was informed that the aircraft flew the prescribed runway heading departure.

5/13/2008 @ 1318L
Middletown
San Diego, CA 92103

For the last half hour, the time now is 1:18 p.m. on Tuesday. For the last thirty minutes I have been listening to an MD-80 run up their engines at an excess my A-weighted noise loudness, dB meter, it was running at 95 decibels. It's just totally impossible to even think with this going on. Can't they direct their jets in some other direction, or do something else besides running them up so that the noise is sent Downtown, as well as me here? Thank you very much.

Caller did not request a call back. The aircraft, a Stage 3 MD80, followed all prescribed engine run-up procedures.



5/13/2008 @ 1320L
Middletown
San Diego, CA 92103

I would like the call returned. I'm listening to about at least a half hour of a high power run by an MD80, which is the noisiest aircraft on the airport. In view of the recent problems American has had with this aircraft, I think I should let the media know also. What takes 30 to 45 minutes of many, at least five, full power runs on a stationary aircraft sitting there? I would like a call back, thank you. I think I'll call the news next.

Caller was informed that the aircraft, an American Airlines Stage 3 MD80, followed all prescribed engine run-up procedures.

5/13/2008 @ 1709L
Point Loma
San Diego, CA 92107

Aircraft today, May 13th, at 5:09 p.m. turned south way prior to crossing the coastline. It was a little bit south of my property, but definitely out, a different departure from most aircraft that go out over the pier, and very noisy. Thank you.

Caller did not request a call back. The aircraft was an "Early Turn" departure. The flight track will be sent to the FAA for evaluation.

5/16/2008 @ 0517L
Uptown
San Diego, CA 92103

I'd like to make a noise report this morning, May 16th, at about 5:17 a.m. there was a loud noise, apparently an airplane was taking off in the easterly direction. You don't need to call me back, thank you, bye.

Caller was informed that the operation was a missed approach on Runway 27. Arrivals are permitted twenty-four hours a day.

5/16/2008 @ 0520L
Point Loma
San Diego, CA 92106

Hi, I'm calling because in the past week or two we've noticed increased airport noise at our house in the evenings. Last night particularly, which was May 15th, from about 9:10 until 9:30 p.m. it seems fairly continual. It appears that the planes are flying closer out toward our home, and they're turning sooner at the end of the point and coming back over lower as they turn and go back east. Again, it's mostly in the evening between 9:00 and 10:00 in the evening. This morning, May 16th, I also noticed at about 5:20 a.m. a plane, a really loud plane, I think it might have been out of North Island. But I'd say last night on the 15th, and the previous nights we've noticed quite a bit of more noise than normal flying, airplanes flying out from Lindbergh Field around nine in the evening, and again last night from 9:20 to about 9:30 p.m., it was really loud, continually. Alrighty, bye-bye.

Explained that the operation was a non-runway heading missed approach on runway 27; caller was informed that arrivals are permitted twenty-four hours a day.



5/16/2008 @ 1000L
Loma Portal
San Diego, CA 92106

I'm complaining that since around 8:00 a.m. till about now, and about 10 minutes or so, the planes have been flying directly over our house to make great deals of noise. I work from home and I've had to stop three conference calls so far. I'm trying to make some other personal calls, and it's quite annoying, and quite out of their normal path. This has been very frustrating for me. I'd appreciate a call back. Thank you very much, have a wonderful day.

Caller was informed of Air Traffic Control procedures and that the aircraft flew the prescribed runway heading departure.

5/16/2008 @ 1020L
Loma Portal
San Diego, CA 92106

I'm calling on this airport noise. The planes seem to be taking off more over our home. I'm trying to make phone calls pertaining to the upcoming election, and I'm constantly interrupted due to the noise. And this happens quite frequently. Thank you very much, bye.

Caller was informed of Air Traffic Control procedures and that the aircraft flew the prescribed runway heading departure.

5/16/2008 @ 1030L
Loma Portal
San Diego, CA 92106

I would like to register a complaint that the airplanes are coming closer, and more over us now than they ever have been before, and I can't see any reason for it. They seem to be the older planes, they're very, very noisy. It's getting worse and worse, coming this way, that is out towards the point. So, what I think we should do is just really watch this and see if we can't do something to mitigate this kind of thing. Thank you, bye-bye.

Caller was informed of Air Traffic Control procedures and that the aircraft flew the prescribed runway heading departure.

5/16/2008 @ 1310L
Loma Portal
San Diego, CA 92106

I have a complaint about the plane noise. Please return our call, thank you, bye.

Caller was informed of Air Traffic Control procedures and that the aircraft followed all prescribed procedures.



5/16/2008 @ 1450L
Middletown
San Diego, CA 92103

I've been very negligent about calling and advising you of the continuing noises on these planes. I guess they're FedEx planes particularly, warming up their engines. And of course you think they're tweaking, but it's really getting worse again, and it's getting continuously, and it even overrides takeoffs and landings. I guess the only thing I want to know is when are you going to do something about it, for noise abatement here? We neighbors are still subjecting ourselves to your generation of noise. I know it's for the record, but I just don't know why you just can't spend a few pennies, giving back our quiet homes. A happy neighbor, thank you. And if you can advise me of what I can do to get attention in this matter, I would be very happy to participate, thank you.

Caller was informed of the Engine Run-up procedures and that the aircraft followed all prescribed procedures.

5/17/2008 @ 0907L
Ocean Beach
San Diego, CA 92107

Good morning, this morning there have been non-stop planes flying over our house. They're not sounding at all like they should be. It's May 17th, and just now, about two minutes ago, at 9:07 a.m., there was a very loud airplane that flew over our house that was very disruptive and set off car alarms, so I know it was over the required decibels. So, I would like you to look into that and fine that aircraft, or whatever you need to do so this doesn't happen again. And I would also like to see the planes start to be fanned again, because it's just ridiculous, thank you.

Caller did not request a call back. The aircraft followed all prescribed departure procedures.

5/18/2008 @ 1800L
Golden Hill
San Diego, CA 92102

Hello, this is Sunday at 6:00 p.m. and all this afternoon, and well this morning, and this afternoon the planes have been flying over my house. I'm not supposed to be outside of the landing pattern, because of where my house is in Golden Hill, and yet your planes are being guided to land over us. Now, what is the answer to this? It's not just today, but it's lately more and more they're using our airspace to land. If this is some change, I would like to know, but if it isn't, I would like it stopped, okay. Thank you.

Caller did not leave a phone number. The aircraft followed all prescribed arrival procedures.

5/19/2008 @ 0450L
Ocean Beach Heights
San Diego, CA 92107

Yes, my complaint is air traffic at 5:20 a.m. May 16th, and then again at 4:30 and 4:50 a.m. May 19th. All these were, I believe, departures, so just complaining since these were before the 6:30 a.m. Curfew had been lifted, and it's very annoying. Thank you, bye.

Explained that the operations were landings on Runway 09; caller was informed of the Airport Use Regulations, Time of Day Restrictions, and that arrivals are permitted twenty-four hours a day.



5/19/2008 @ 1000L
Loma Portal
San Diego, CA 92106

Good morning, I'm calling to complain about the four o'clock arrival that happened, I think almost everyday last week. Somebody seems to be coming in on Runway 09 and it's waking us all up out of a dead sleep. So, I'm curious what the nature of that is, because it's definitely not weather related because there's only one flight. The other thing is, I'm requesting, I'm wondering if I could have the CNEL, or the average noise for the month of April, for the monitor that's located on Browning Street right by Loma Portal Elementary. You guys should have some kind of an average number of the noise level for that month of April. If you could give me that information too, hopefully it won't be too hard. Thank you very much, bye.

Explained that the operations were landings on Runway 09; caller was informed that arrivals are permitted twenty-four hours a day.

5/20/2008 @ 0430L
Loma Portal
San Diego, CA 92106

Yes, and my question is, what's the point in a curfew when a FedEx plane wakes me up and my children at four in the morning almost every morning of the week. Literally if I stood on my roof, I could nail the bottom of that airplane with a tennis ball. It is rattling my entire house. What is the point in a curfew? Also, as a homeowner, it was never disclosed to us that there were going to be 4:00 a.m. fly-bys at our house. I would like somebody to call me back cause I don't understand why the FedEx plane continually takes the westerly route when it's not necessary. I'm also curious as to why I never see the FedEx plane penalized for flying outside of curfew. What is a curfew? So, I'd appreciate a call back, thanks.

Explained that the operations are landings on Runway 09; caller was informed of the Airport Use Regulations, Time of Day Restrictions, and that arrivals are permitted twenty-four hours a day.



5/20/2008 @ 0900L
Downtown S.D
San Diego, CA 92101

Would you please call me. I want to file a complaint about the Red Bull Air Races that took place again in San Diego about a month ago. This is the second time that it's taken place and it's a nuisance and it's just horrible pollution to the people who live and work in Downtown San Diego. So, I'd like steps taken to not have that even there again. So, appreciate your help. Part of the problem with it is it's sort of like this optional entertainment thing, and Red Bull is making money out of it and subjecting citizens to horrible noise pollution. So, this doesn't seem like a good fit. We don't really need that here in Downtown San Diego. So, they can do it somewhere else if they really want to, but you know, let's not subject Downtown citizens to the noise and danger of that event. Thank you very much, goodbye.

Caller was informed that the Red Bull Air Races did not take place at San Diego International Airport and the Airport Authority had no part in. Referred the caller to the FAA Flight Standards District Office (FSDO).

5/28/2008 @ 0430L
Middletown
San Diego, CA 92103

I'd like to register a noise complaint, about 4:30 this morning we heard at least three aircraft either take off or land, and it's extremely loud, so, I don't know if they were taking off or landing. Each within 10 or 15 minutes of one another, and of course it woke us up, and we've been awake ever since. I thought there was a curfew, for at least 6:30 a.m. before takeoff. So, we're just registering a formal complaint. Maybe a call back would be in order so that we could know who is taking off or landing between 4:00 to 4:30 in the morning and we can write letters to them, as citizens nearby the airport. It's very annoying. So, thank you, and we'd appreciate a call back, have a great day.

Explained that the operations were landings on Runway 09; caller was informed of the Airport Use Regulations, Time of Day Restrictions, and that arrivals are permitted twenty-four hours a day.

5/29/2008 @ 1818L
Ocean Beach Heights
San Diego, CA 92107

And the nature of the complaint is, a low flying plane, today's date is May 29th, at 6:18 p.m., appeared to fly over the Ocean Beach area. And yes, I would like to have somebody give me a call back, thanks a lot, bye.

Caller was informed that the aircraft, a hushkitted B727, flew the prescribed runway heading departure.

5/30/2008 @ 0710L
La Jolla
San Diego, CA 92037

I live on the border of La Jolla and Pacific Beach, near the beach, and just in the last week or so ago, started to hear the planes taking off as they climb. Never heard it before, and I'm just wondering if you've changed the flight path, and if it's going to be permanent or not. Please give me a call, thanks a lot.

Caller was informed of Air Traffic Control procedures and that no changes have been made to the flight paths.



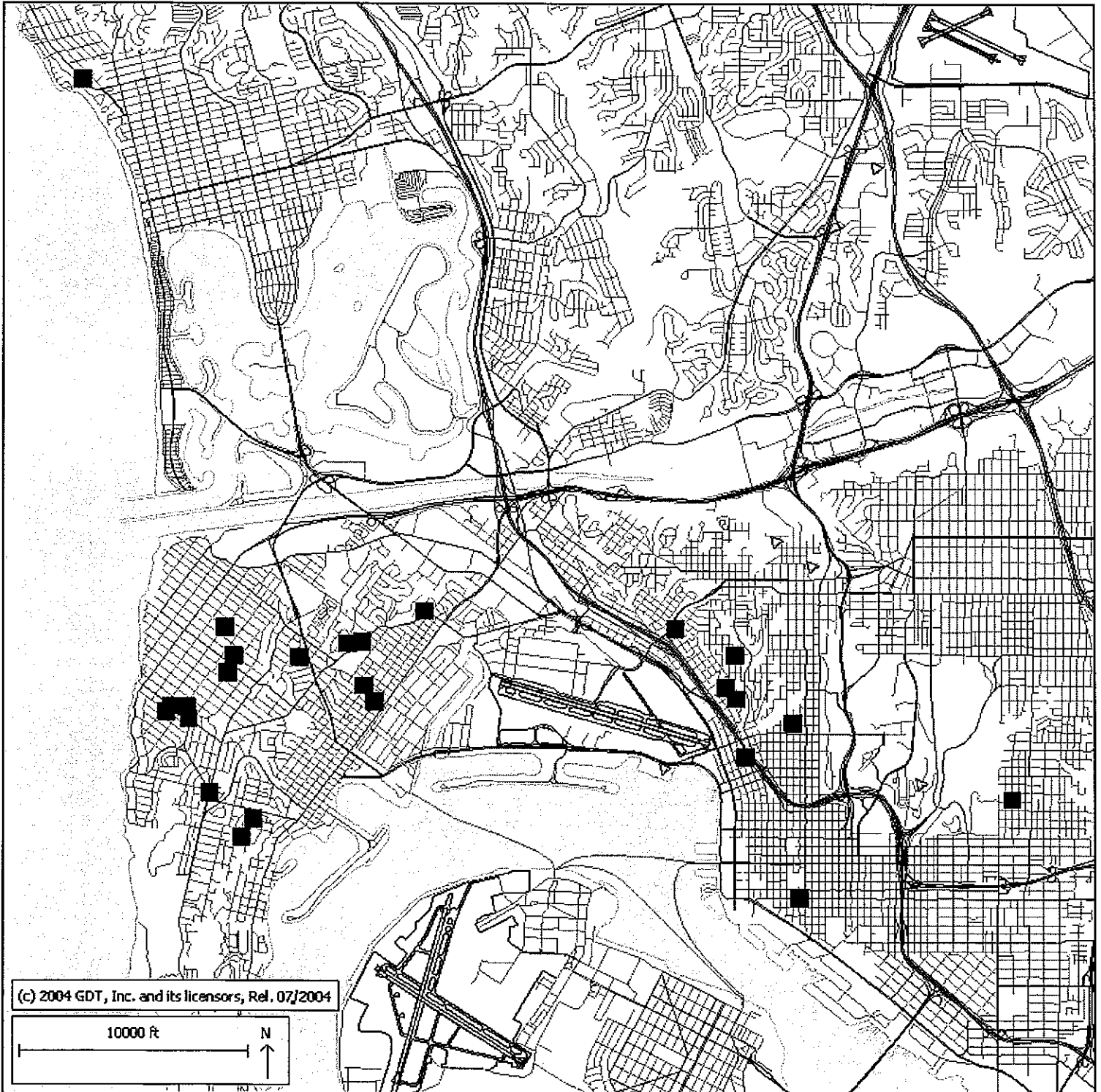


May 2008

Aircraft Noise Complaint Caller's Location in relation to
San Diego International Airport (SDIA)
26 Households; 28 Complaints



SAN DIEGO
INTERNATIONAL
AIRPORT



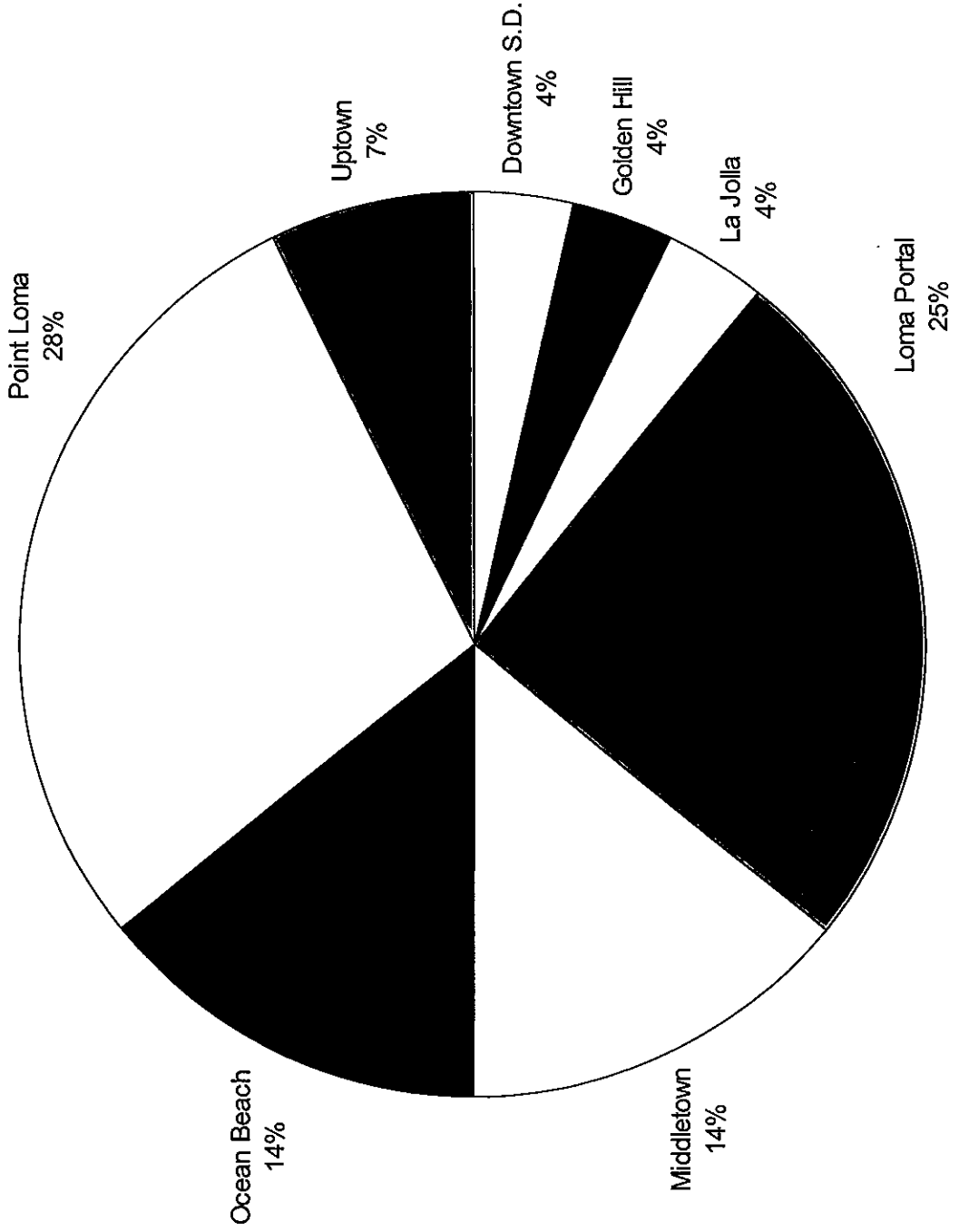
Aircraft Noise Complaint Distribution by Neighborhood



SAN DIEGO
INTERNATIONAL
AIRPORT

May 2008

TOTAL CALLS: 28



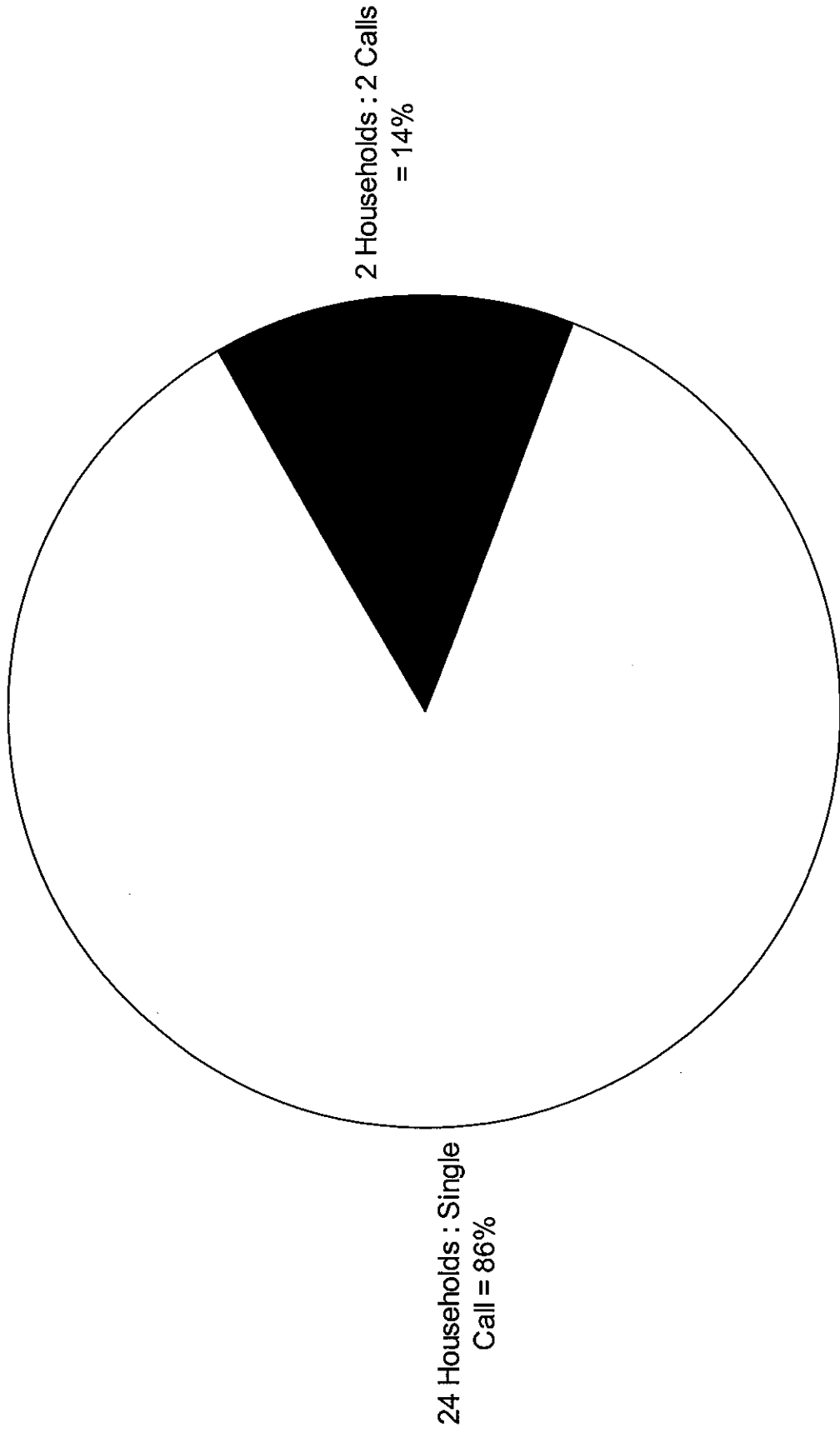
Aircraft Noise Complaint Distribution by Household



SAN DIEGO
INTERNATIONAL
AIRPORT

May 2008

TOTAL CALLS: 28



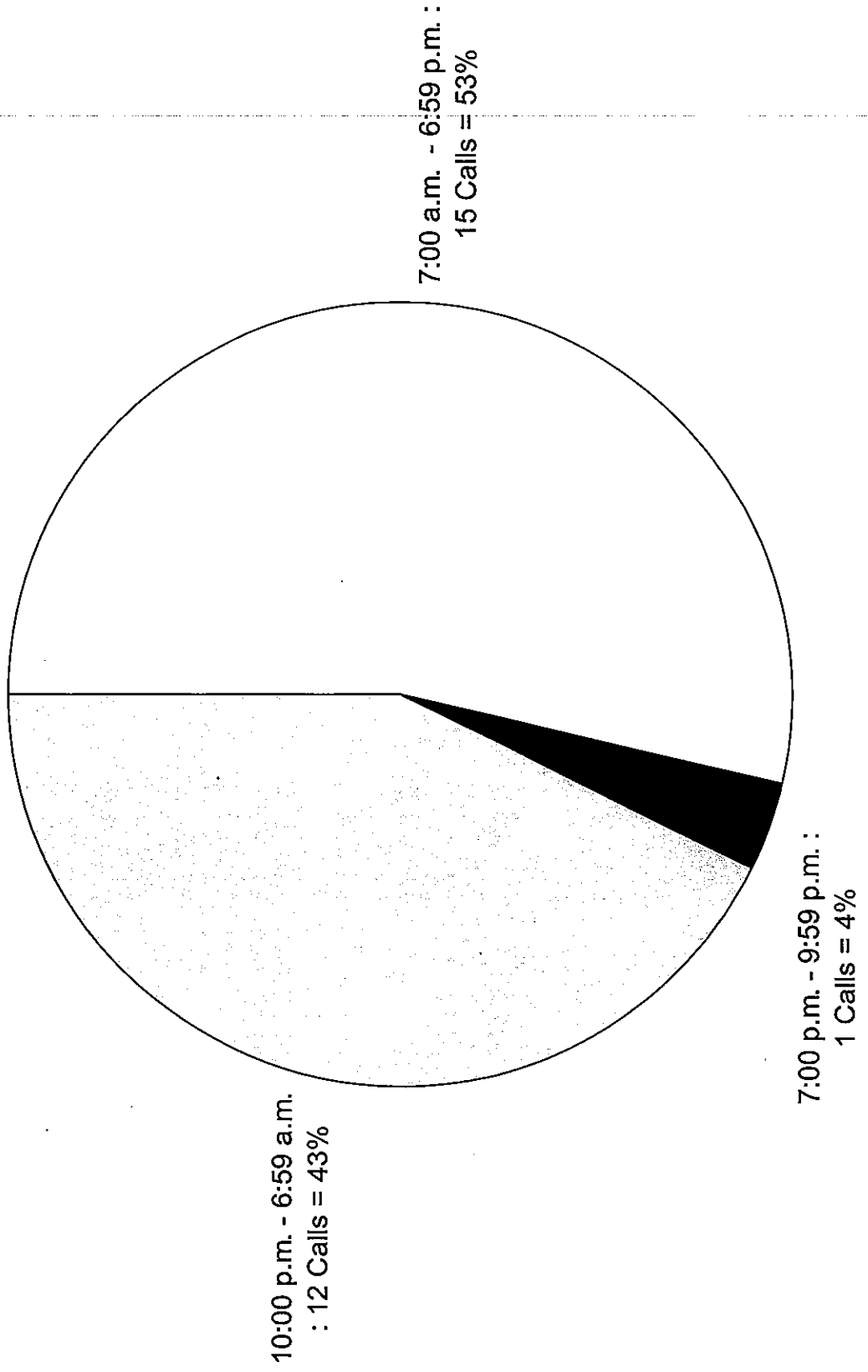
Aircraft Noise Complaint Distribution by Time of Day



SAN DIEGO
INTERNATIONAL
AIRPORT

May 2008

TOTAL CALLS: 28



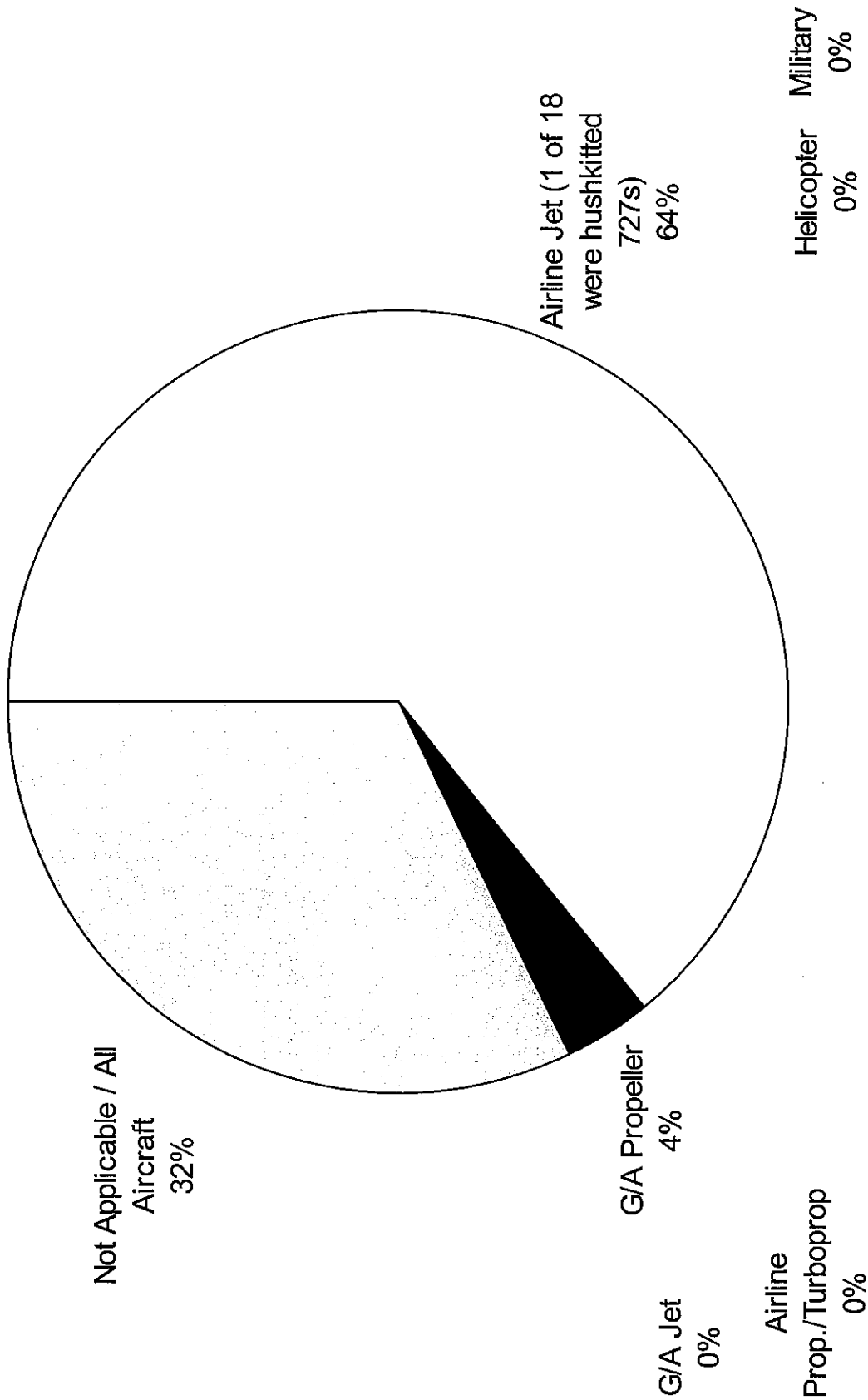
Aircraft Noise Complaint Distribution by Aircraft Type



SAN DIEGO
INTERNATIONAL
AIRPORT

May 2008

TOTAL CALLS: 28



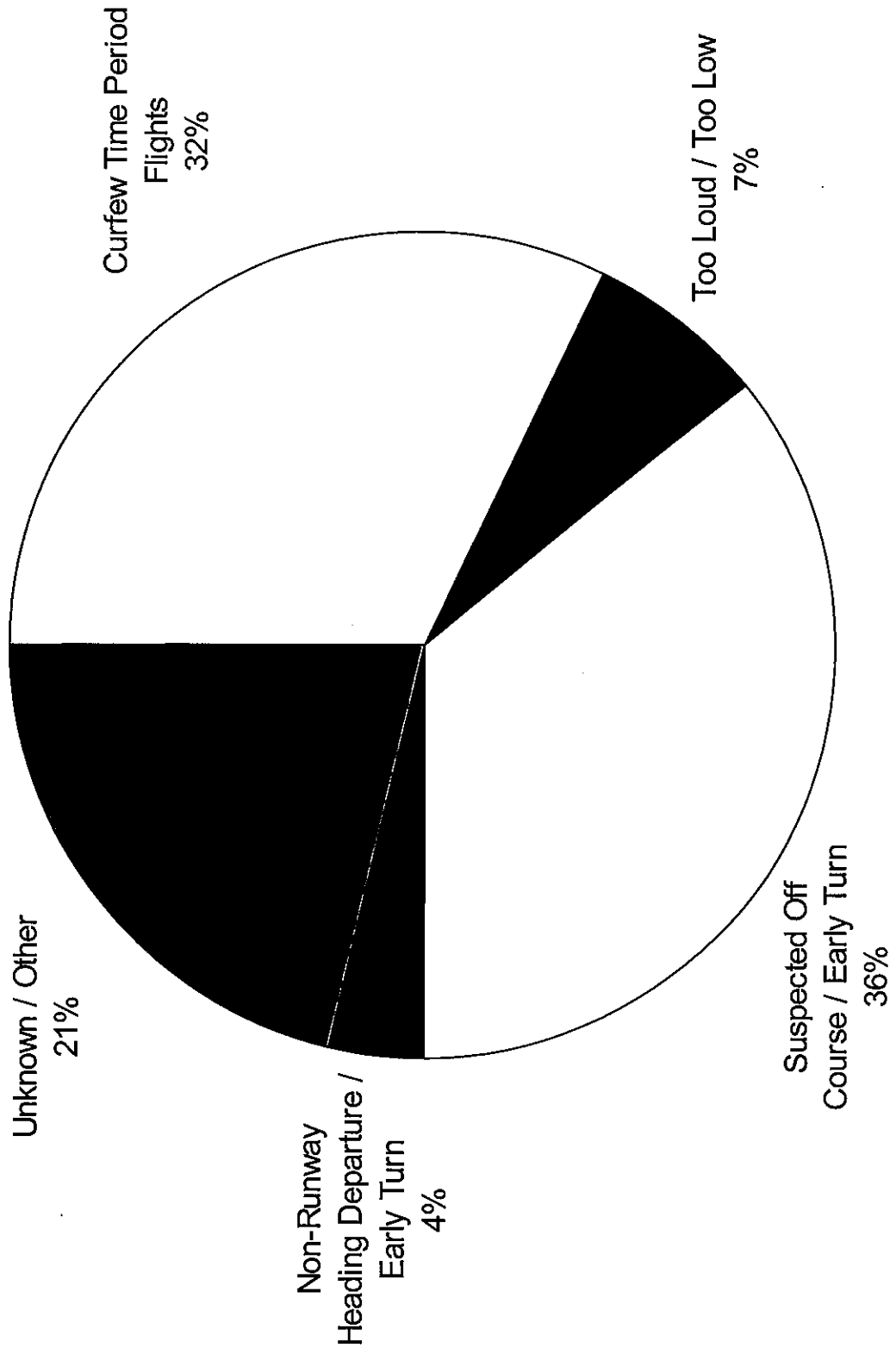
Aircraft Noise Complaint Distribution by Cause



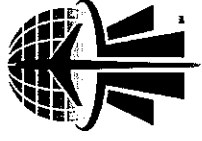
SAN DIEGO
INTERNATIONAL
AIRPORT

May 2008

TOTAL CALLS: 28

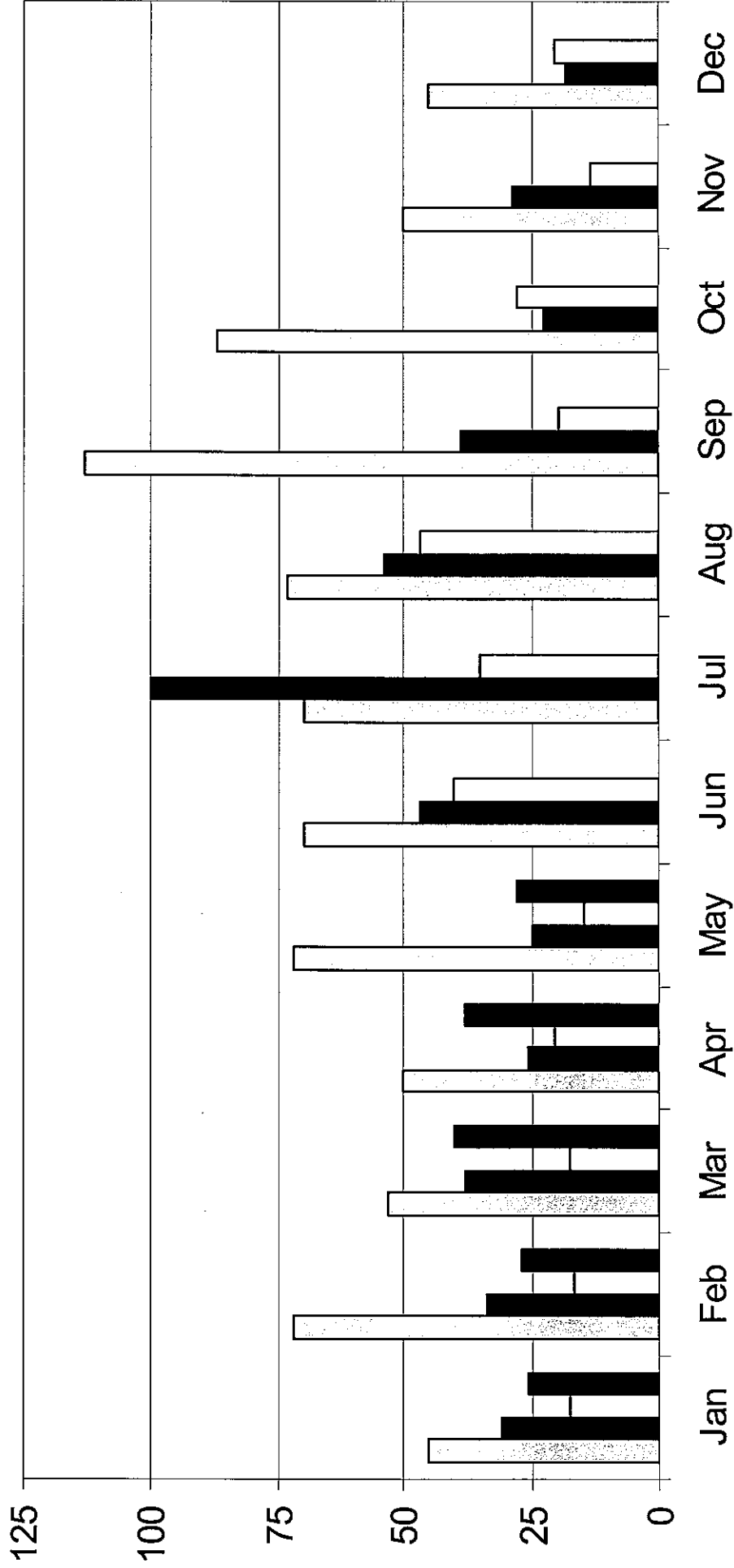
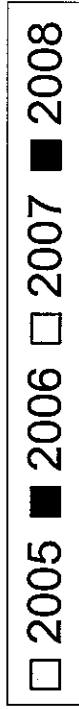


Monthly Aircraft Noise Complaints



SAN DIEGO
INTERNATIONAL
AIRPORT

2005 – May 2008



Annual Aircraft Noise Complaints



SAN DIEGO
INTERNATIONAL
AIRPORT

2005 – 2008 (May)

