



COMMUNITY TOWN HALL MEETING



CDR Steven Sharer, USN
Executive Officer, Naval Base Point Loma

23 September 2008 - POINT LOMA TOWN HALL MEETING

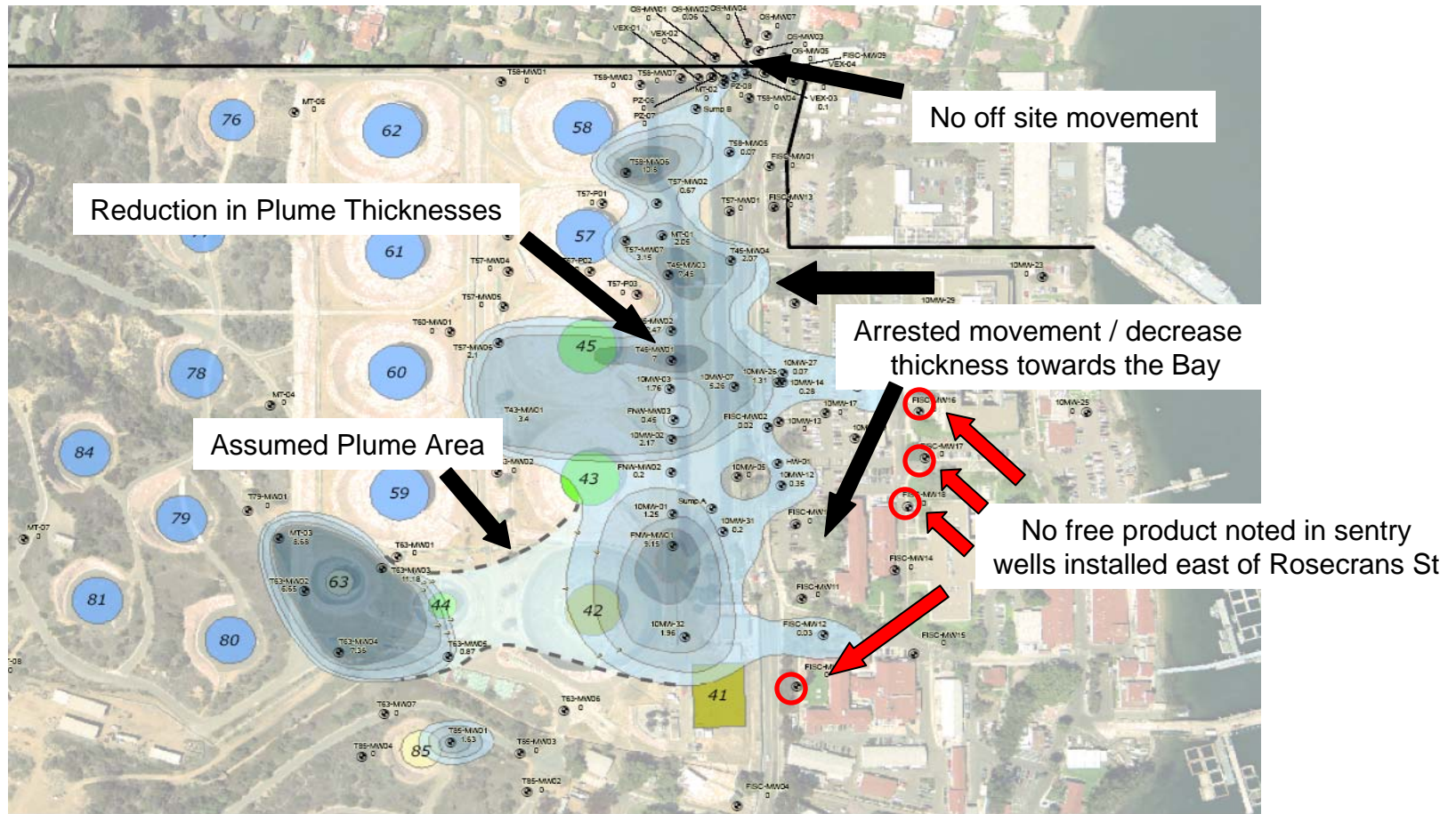


NAVAL BASE POINT LOMA AGENDA

- Defense Fuel Support Point Plume Overview
- Replacement Fuel Plume Recovery System
- Military Construction Project (MILCON P-401)
- Miramar Fuel Pipeline Repairs – La Playa Area
- Cabrillo Memorial Drive Construction Projects
- Former Naval Training Center (NTC) Point Loma
- BRAC Mandated Construction Projects
- Questions



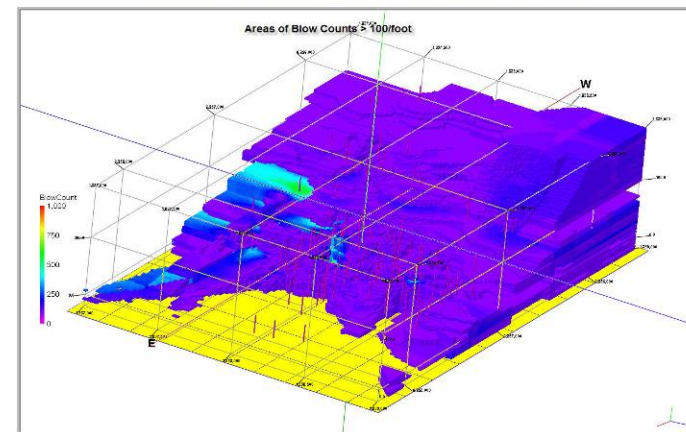
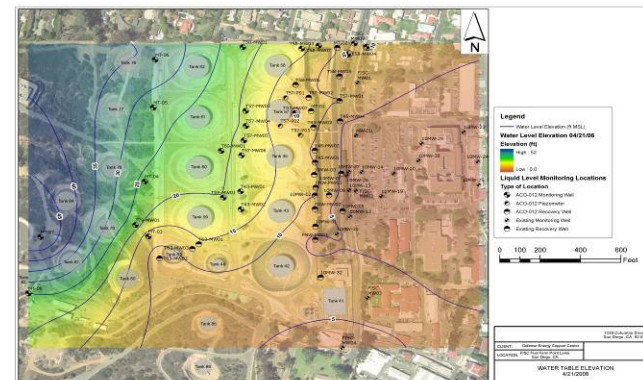
Defense Fuel Support Point Underground Fuel Plume





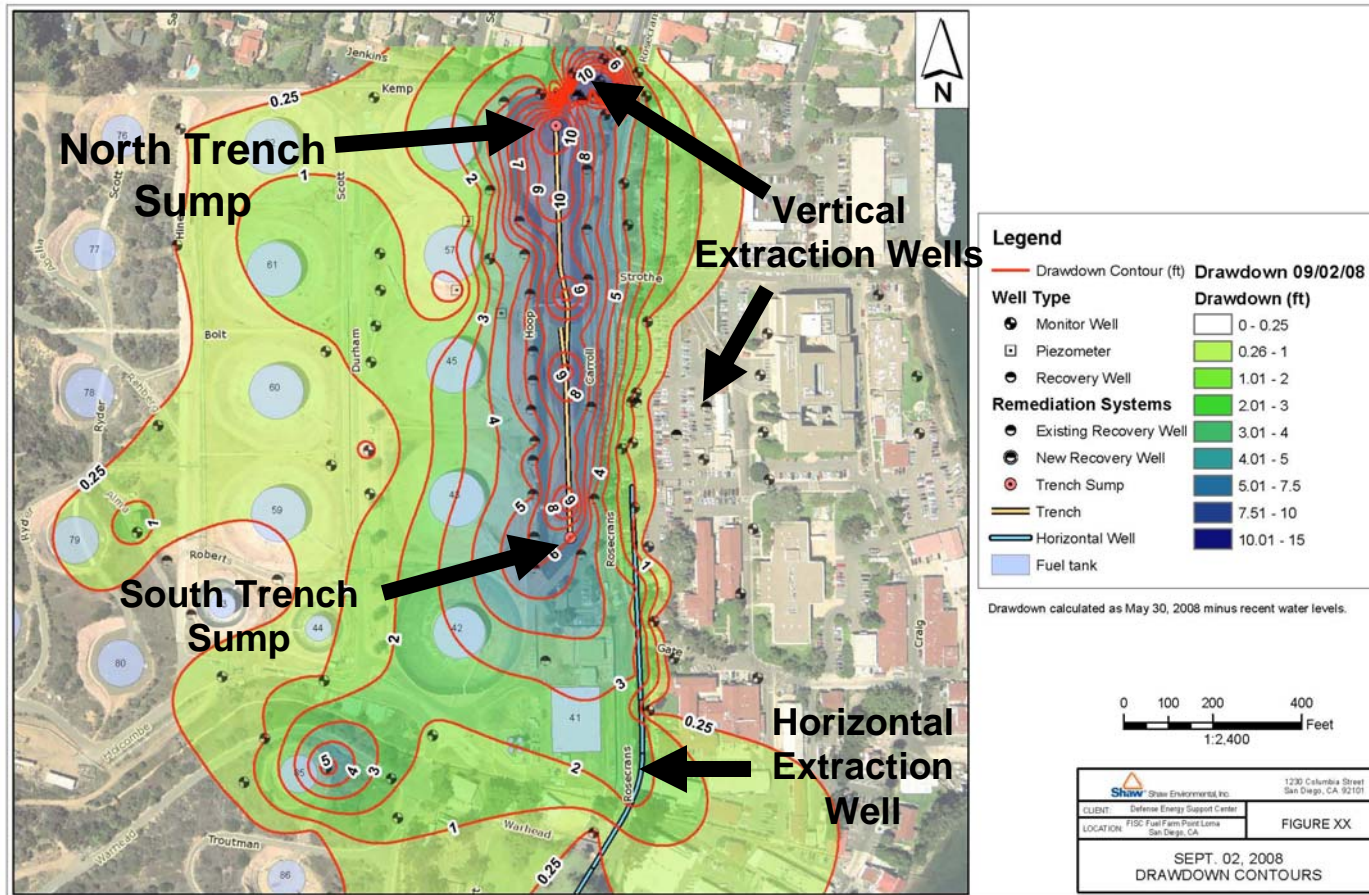
Defense Fuel Support Point Site Assessment Progress

- Regional Water Board concurred with Corrective Action Plan and Recovery System installed
- Tank 85 physically closed and Closure Report submitted to County of San Diego Dept. of Environmental Health.
- Quarterly groundwater and soil vapor monitoring and reporting



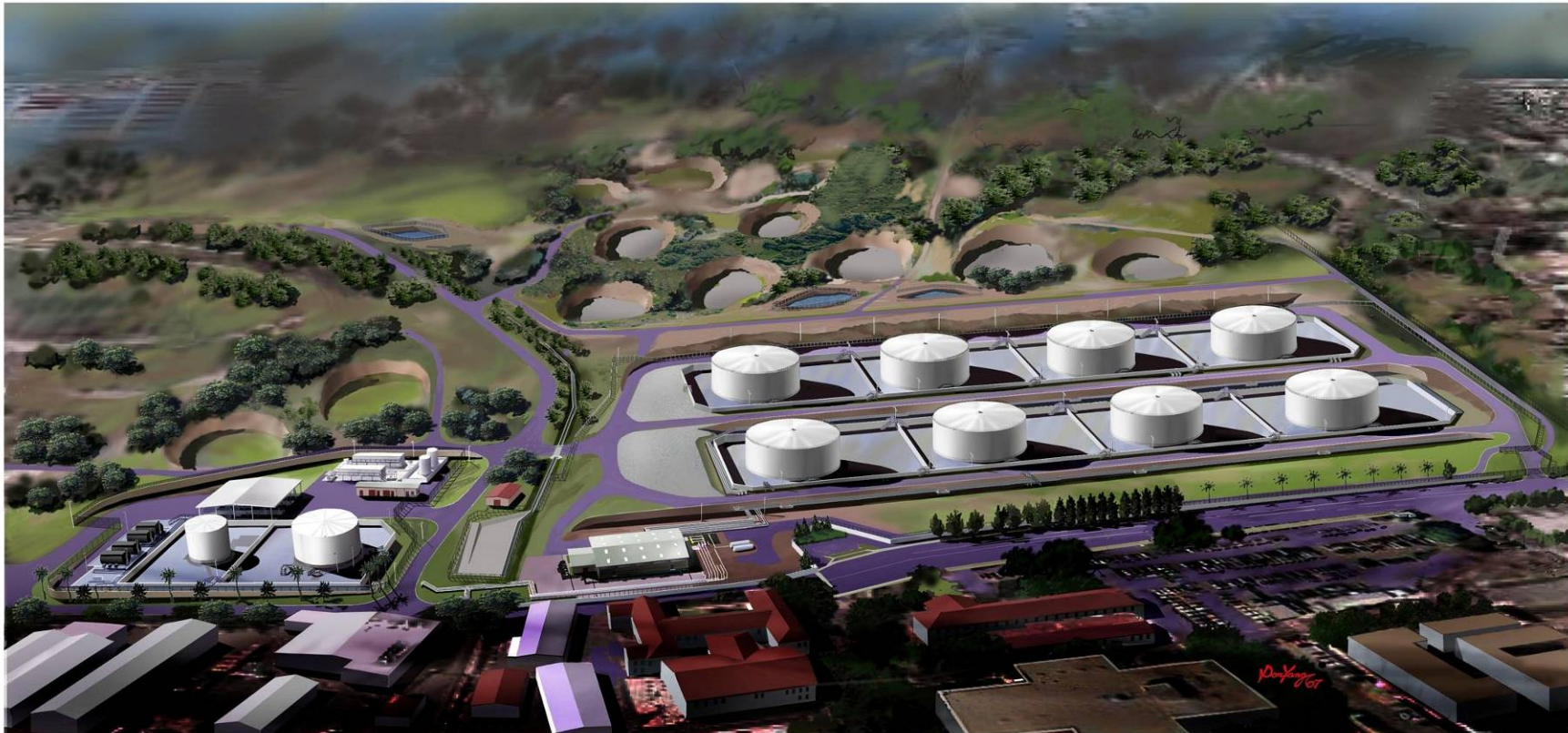


New Underground Fuel Recovery System Startup





Military Construction Project (MILCON) P-401



DFSP POINT LOMA - REPLACE FUEL STORAGE FACILITIES
FISC SAN DIEGO, CALIFORNIA





MILCON P-401

Environmental Assessment

- The Environmental Assessment's Finding of No Significant Impact completed and signed by Commander Navy Installation Command
 - Considered Traffic, Air, Noise and Impacts to the adjacent neighborhoods
- California Coastal Commission found the project to be consistent to the maximum extent practicable with the California Coastal Management Program in September 2007
- Army Corps of Engineers 404 Permit and Regional Water Quality Control Board 401 Permit issued in July 2008
- Historical & Archeological Resources documentation and consultation completed with State Historical Preservation Officer and local parties.



Miramar Fuel Pipeline Repairs – La Playa Area





New Commercial Vehicle Inspection Station



➤ Construction completed on Commercial Vehicle Inspection (CVI) Station on Catalina and operational Spring 2008

➤ NBPL commercial vehicles which currently use Rosecrans will be diverted to Catalina CVI during P-401 construction





Commercial Vehicle Inspection Station

- Commercial Vehicle inspection and queuing for P-401 related vehicles will be conducted on Naval Base Point Loma Property located at Nimitz and Harbor Drive to minimize impact of traffic on Rosecrans



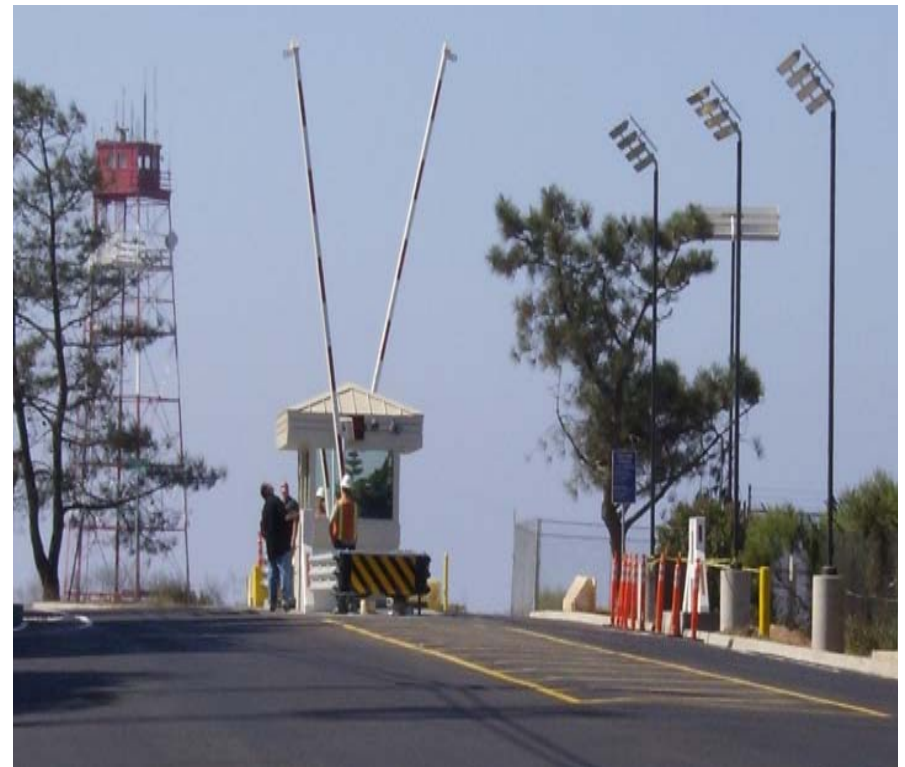


Relocation of Post Two Cabrillo Memorial Drive

Previous Post



New Post





Naval Training Center Status

**All of NTC, except the boat channel has been conveyed to the City.
Environmental studies underway for final conveyance of the channel.**



South View



North View



Questions



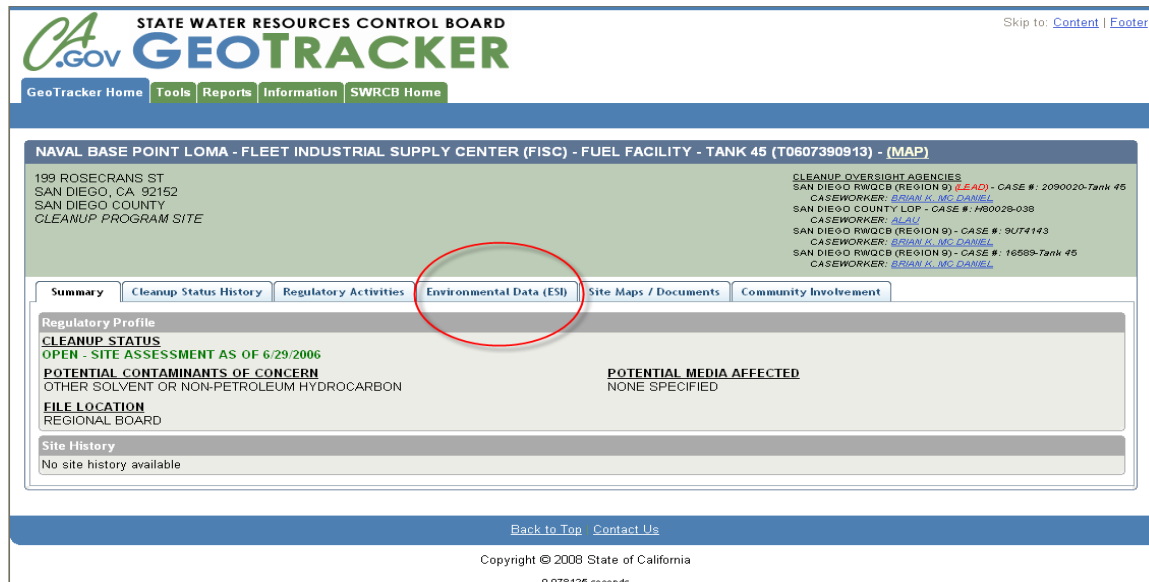


Web Site Info

- A copy of this presentation can be found at <https://www.cnmc.navy.mil/PointLoma/Newsroom/PressReleases/MILCONP-401Project/index.htm>

State Water Resources Control Board
GeoTracker Webpage
Steps to find analytical data about Naval Base Point Loma-DFSP Fuel Plume

- Go to <http://www.geotracker.swrcb.ca.gov/>
- Enter 199 Rosecrans Street at Map Cleanup Sites (example below) then click on Search
- A page with a Google map will open
- Zoom in to get a better view of the Northern boundary of NBPL
- Your mouse pointer will appear as a hand while in the map area
- Single click on any of the green colored boxes then a bubble will appear above the respective box that you clicked on.
 - The sites (green boxes) just West (left) of Rosecrans Street, North of Sparks Road and East (right) of Holcomb Road will have the data pertinent to the Fuel Plume.
- Click the hyperlink (underlined description) for the location in the bubble
- A new window will open (example below)



- Select any of the tabs across the top to see information within that specific tab
- The Environmental Data (ESI) tab (circled in example above) will have the analytical data collected. Click on any of the hyperlinks to see the specific data.