



DESTINATION LINDBERGH

THE ULTIMATE BUILD-OUT

Presentation for:

Peninsula Community Planning Board

Point Loma Association

September 23, 2008



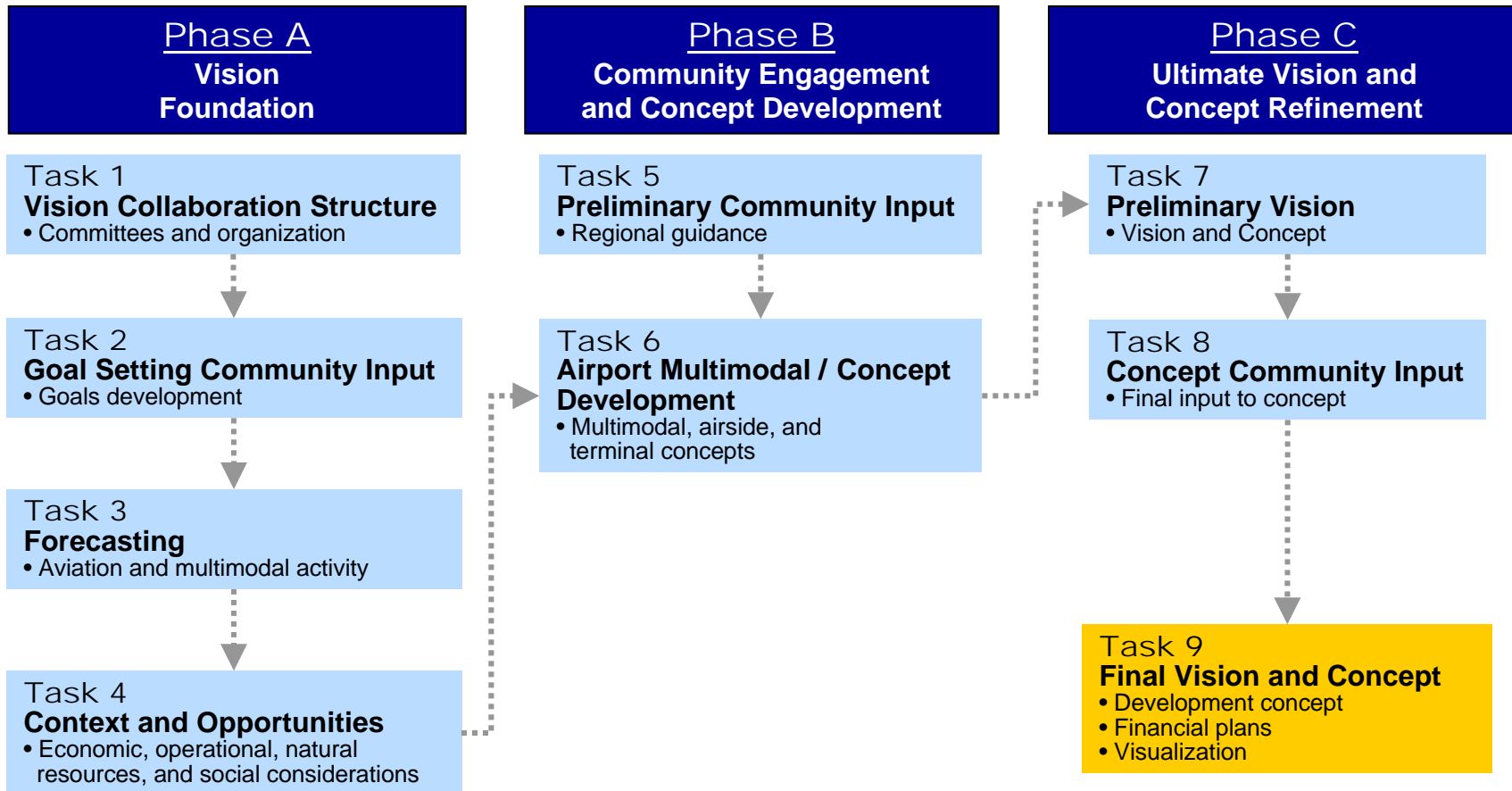
Presentation Outline

- Background on Destination Lindbergh
- Work Flow
- Summary of Concepts Retained
- Decision Sequence / Next Steps

Background on Destination Lindbergh

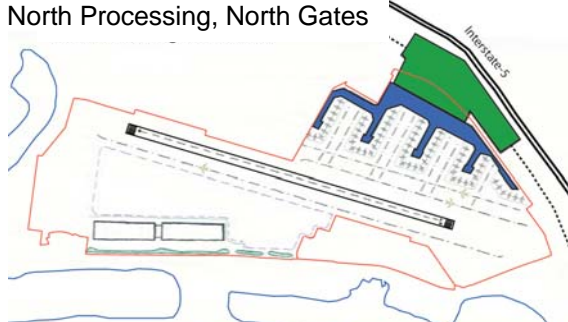
- Cooperative study, being conducted by:
 - SANDAG
 - City of San Diego
 - Airport Authority
 - County of San Diego
 - Metropolitan Transit System
 - Port of San Diego
 - North County Transit District
 - Department of Defense
- Policy direction by Ad Hoc Regional Policy Committee
 - Mayor Sanders, Chairman
 - Alan Bersin, Vice-Chairman
- Seeks to optimize the entire transportation system in and around Lindbergh Field--not maximize airport activity
- Emphasizes intermodal accessibility

Work Flow



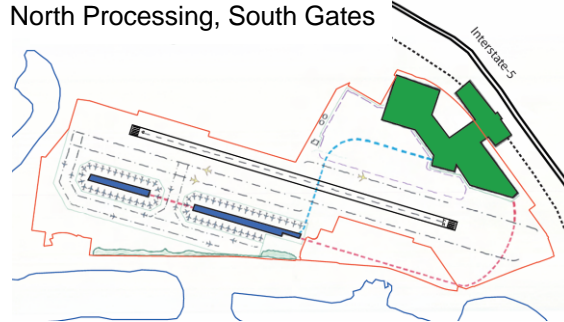
Terminal / ITC Concepts Direction

Concept 1 – All North
North Processing, North Gates



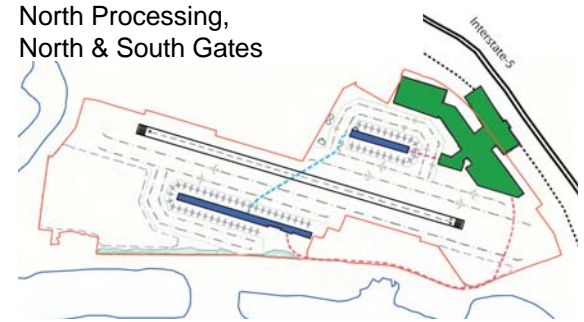
Committee Direction
Removed from further analysis

Concept 2 – Hybrid 1
North Processing, South Gates



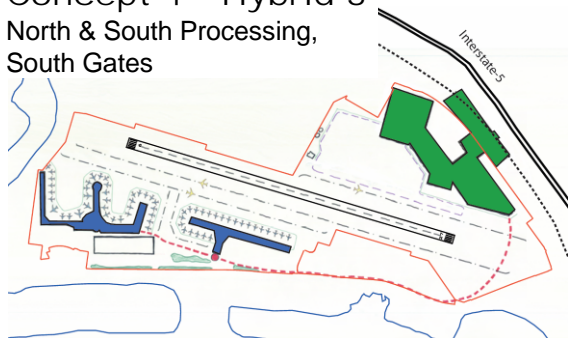
Committee Direction
Combine with Concept 4,
Refine for further analysis

Concept 3 – Hybrid 2
North Processing,
North & South Gates



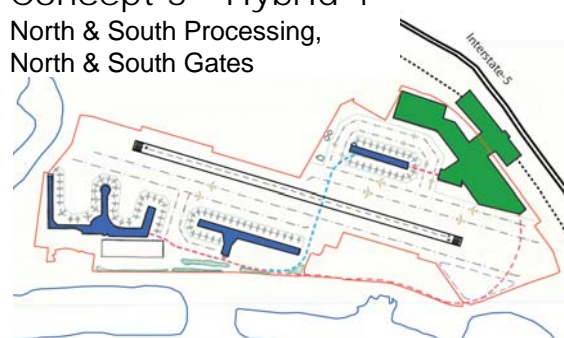
Committee Direction
Possible Long-Term Concept

Concept 4 – Hybrid 3
North & South Processing,
South Gates



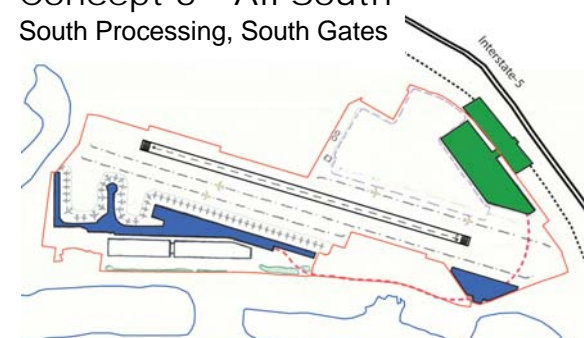
Committee Direction
Combine with Concept 2,
Refine for further analysis

Concept 5 – Hybrid 4
North & South Processing,
North & South Gates



Committee Direction
Possible Long-Term Concept

Concept 6 – All South
South Processing, South Gates

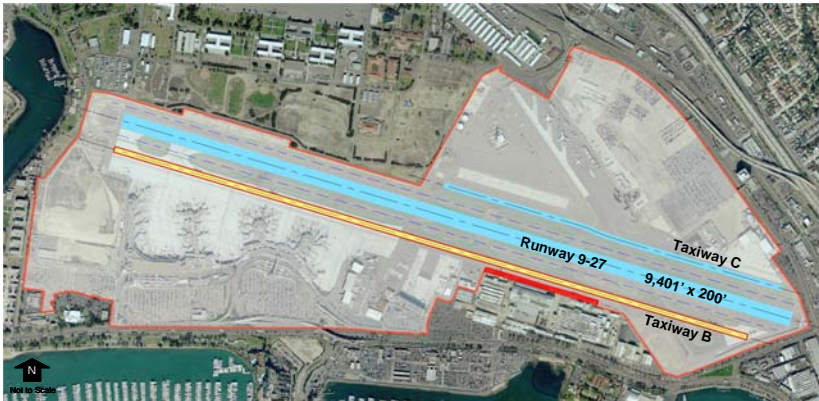


Committee Direction
Removed from further analysis

Note: All concepts are preliminary, for discussion purposes only

Airfield Concepts Retained

Concept A
Taxiway B Realignment 37.5' South



Works with:
Terminal Concepts 2, 3, 4, and 5

Notes: A full-length parallel taxiway on the north side of the runway is required for any gates developed north of the runway. All concepts are preliminary, for discussion purposes only

Concept B
Taxiway C Extension



Works with:
Terminal Concept 1

Note: Concept B is presented for informational purposes only. The US Marine Corps letter of April 18, 2008 stated that MCRDSD property is a national defense resource and is not available to resolve airport land use issues.

Next Steps

- **Refine alternatives**
- **Continue to develop facility requirements**
- **Analyze ground access options**
- **Develop proposed evaluation method**
- **Provide draft concept plan for the Authority's acceptance by February 28, 2009**

For more information...

www.destinationlindbergh.com